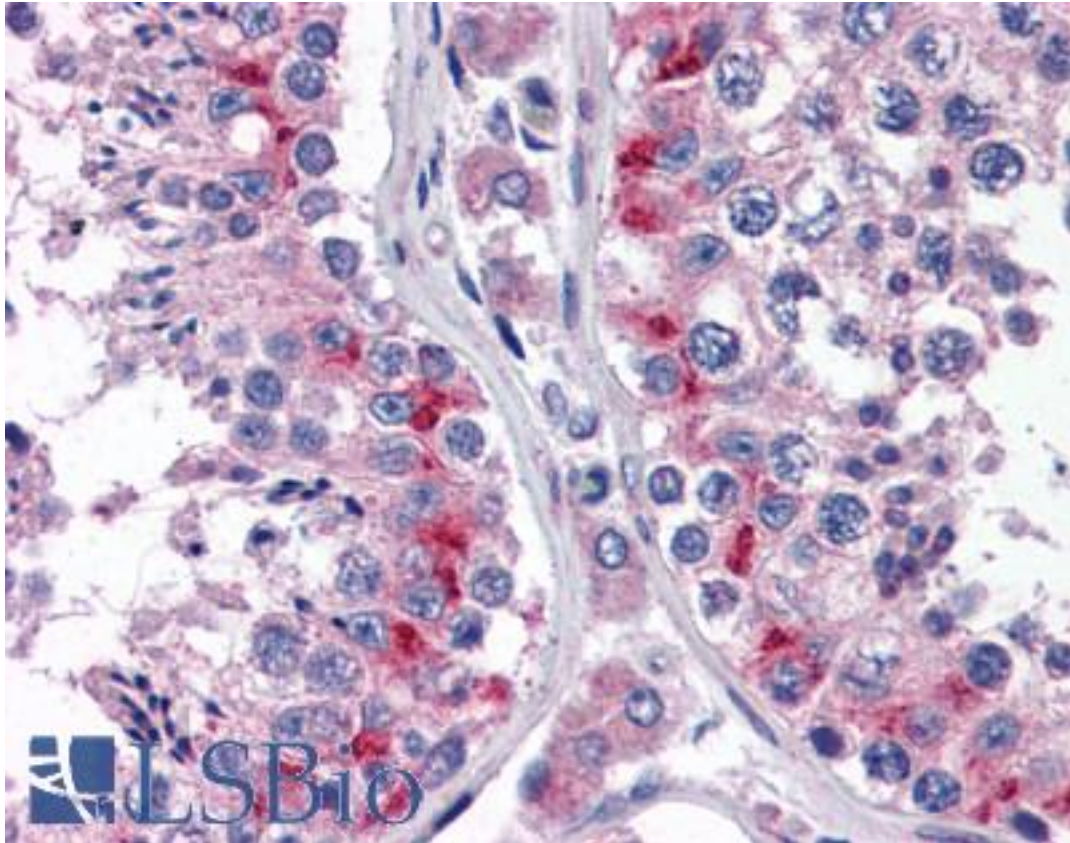


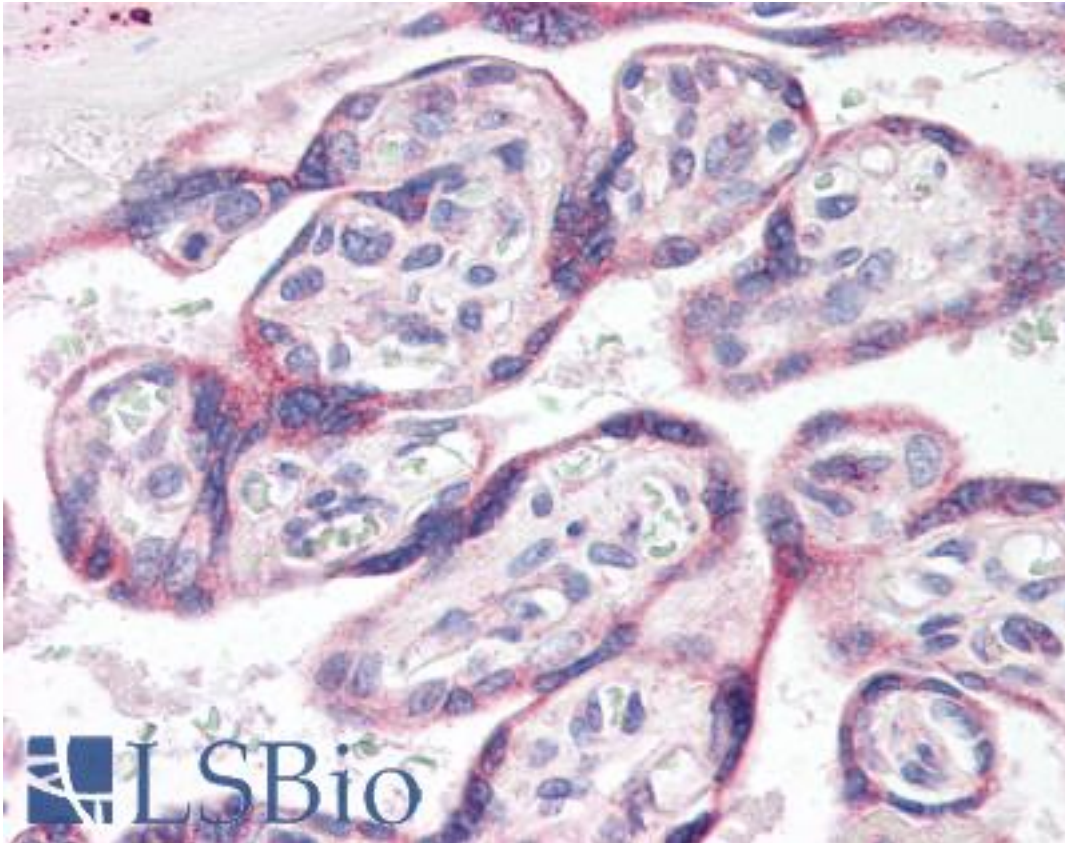
ADORA2A/Adenosine A2A Receptor Rabbit anti-Dog Polyclonal (aa373-391) Antibody - LS-B3067 - LSBio	
CatalogID:	LS-B3067
Validation:	This antibody replaces catalog number LS-C63678. It has been validated for use in the following assays: IHC-P.
Target:	adenosine A2a receptor (ADORA2A)
Synonyms:	ADORA2A Antibody, Adenosine receptor A2a Antibody, ADORA2 Antibody, A2a receptor Antibody, Adenosine A2a receptor Antibody, Adenosine A2 receptor Antibody, Adenosine receptor subtype A2a Antibody, HA2aR Antibody, RDC8 Antibody
Family / Subfamily:	GPCR / Adenosine
Host	ADORA2A antibody was produced in Rabbit
Clonality:	Polyclonal
Isotype:	IgG
Immunogen Species:	ADORA2A/Adenosine A2A Receptor antibody was raised against Dog
Antigen Type:	Synthetic peptide
Immunogen:	ADORA2A/Adenosine A2A Receptor antibody was raised against synthetic peptide: ESHGDMGLPDVELLSHELK, corresponding to amino acids 373-391 of Dog Adenosine Receptor A2a. Percent identity by BLAST analysis: Dog (100%); Gorilla, Marmoset, Panda (89%); Human, Horse (84%).
Specificity:	Detects adenosine receptor A2a. This antibody does not detect other AR subtypes. Species cross-reactivity: Cross-reacts with human. Not yet tested in other species.
Epitope:	aa373-391
Reactivity:	Dog, Human
Purification:	Immunoaffinity purified
Presentation:	PBS, 1 mg/ml BSA, 0.05% sodium azide.
Recommended Storage:	+4°C or -20°C, Avoid repeated freezing and thawing.
Usage Summary:	Immunohistochemistry: LS-B3067 was validated for use in immunohistochemistry on a panel of 21 formalin-fixed, paraffin-embedded (FFPE) human tissues after heat induced antigen retrieval in pH 6.0 citrate buffer. After incubation with the primary antibody, slides were incubated with biotinylated secondary antibody, followed by alkaline phosphatase-streptavidin and chromogen. The stained slides were evaluated by a pathologist to confirm staining specificity. The optimal working concentration for LS-B3067 was determined to be 1:50. Western Blot: 1:1000 detects an ~45kD protein from canine striatum representing A2aAR. Immunohistochemistry (paraffin-embedded sections): 1:100. Staining of A2aAR in human hippocampus yields a pattern consistent with plasma membrane staining.
Uses:	IHC - Paraffin (1:50), Western blot, Immunoprecipitation (Optimal dilution to be determined by the researcher)
Size:	50 µl
Concentration:	0.69 mg/ml

Immunohistochemistry Image:



Anti-ADORA2A antibody IHC of human testis. Immunohistochemistry of formalin-fixed, paraffin-embedded tissue after heat-induced antigen retrieval. Antibody LS-B3067 dilution 1:50.

Immunohistochemistry Image:



Anti-ADORA2A antibody IHC of human placenta. Immunohistochemistry of formalin-fixed, paraffin-embedded tissue after heat-induced antigen retrieval. Antibody LS-B3067 dilution 1:50.

Requested From:

Japan

Laboratory Reagent For In Vitro Research Use Only

Not for resale without prior written consent from LifeSpan BioSciences, Inc.

Created on 9/23/2014

© 2014 LifeSpan BioSciences