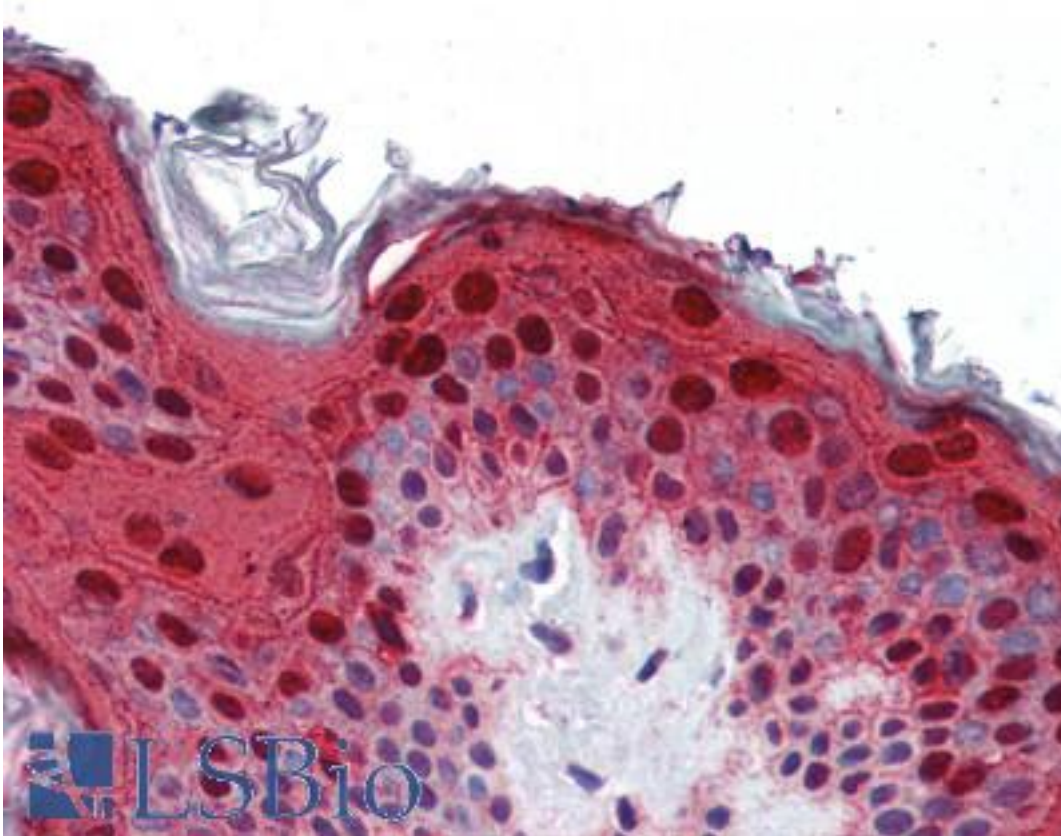


**IVL / Involucrin Rabbit anti-Human Polyclonal (aa420-578) Antibody - LS-B3058 - LSBio**

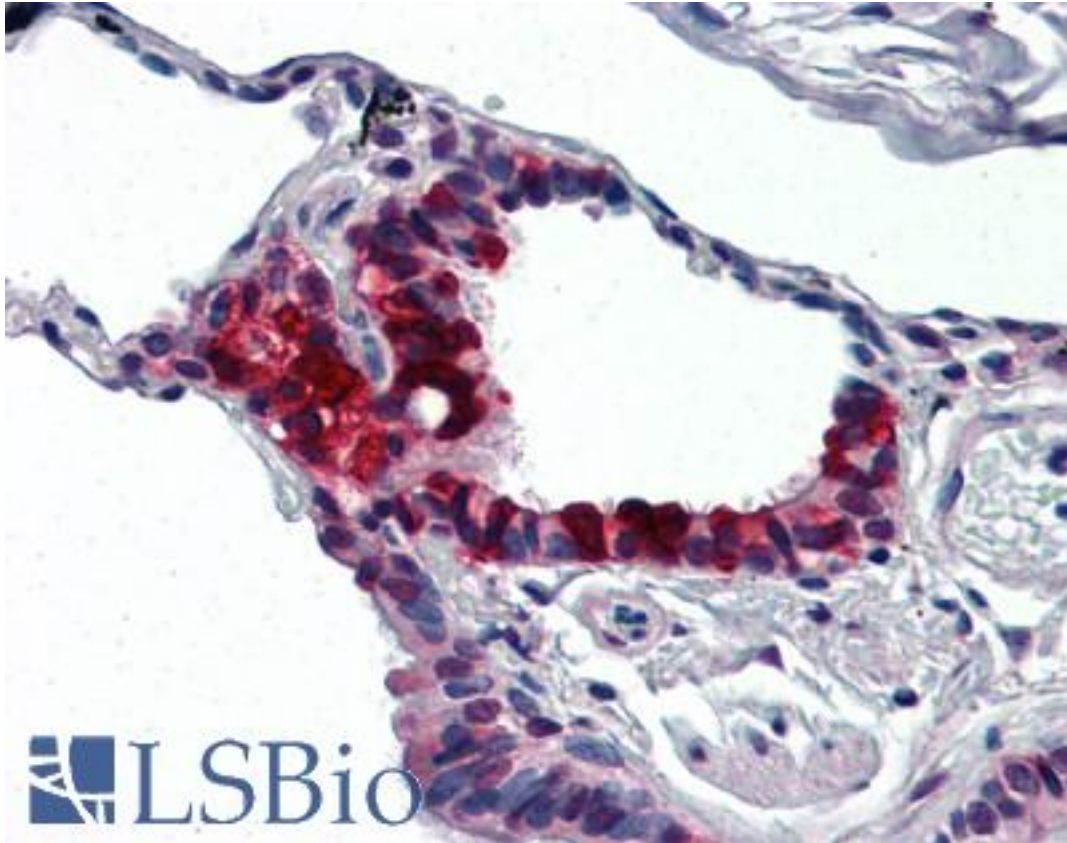
<b>CatalogID:</b>	LS-B3058
<b>Validation:</b>	This antibody replaces catalog number LS-C50281. It has been validated for use in the following assays: IHC-P.
<b>Target:</b>	involucrin (IVL)
<b>Synonyms:</b>	IVL Antibody, Involucrin Antibody
<b>Host</b>	IVL antibody was produced in Rabbit
<b>Clonality:</b>	Polyclonal
<b>Immunogen Species:</b>	IVL / Involucrin antibody was raised against Human
<b>Immunogen:</b>	IVL / Involucrin antibody was raised against recombinant protein encoding aa 420-578 of human involucrin.
<b>Epitope:</b>	aa420-578
<b>Reactivity:</b>	Human
<b>Purification:</b>	Immunoaffinity purified
<b>Presentation:</b>	10 mM PBS, pH 7.4, BSA, sodium azide.
<b>Recommended Storage:</b>	2°C to 8°C
<b>Usage Summary:</b>	Immunohistochemistry: LS-B3058 was validated for use in immunohistochemistry on a panel of 21 formalin-fixed, paraffin-embedded (FFPE) human tissues after heat induced antigen retrieval in pH 6.0 citrate buffer. After incubation with the primary antibody, slides were incubated with biotinylated secondary antibody, followed by alkaline phosphatase-streptavidin and chromogen. The stained slides were evaluated by a pathologist to confirm staining specificity. The optimal working concentration for LS-B3058 was determined to be 10 ug/ml.
<b>Uses:</b>	IHC - Paraffin (10 µg/ml), Western blot (1 - 2 µg/ml) (Optimal dilution to be determined by the researcher)
<b>Size:</b>	250 µl

**Immunohistochemistry Image:**



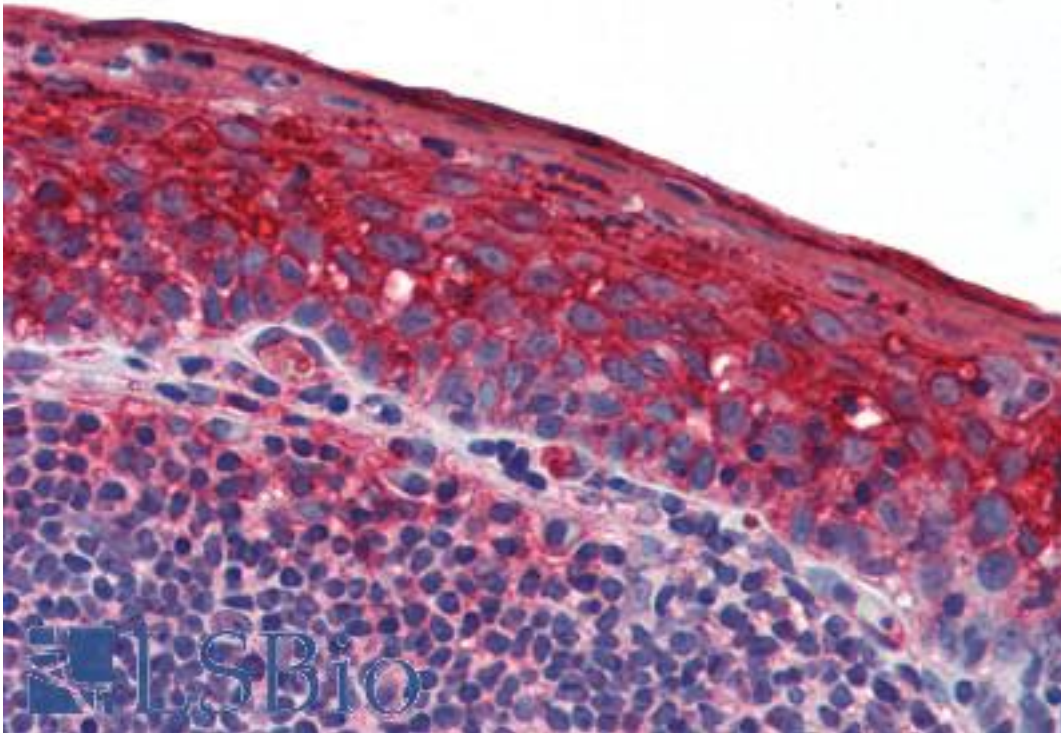
Anti-IVL / Involucrin antibody IHC of human skin. Immunohistochemistry of formalin-fixed, paraffin-embedded tissue after heat-induced antigen retrieval. Antibody LS-B3058 concentration 10 ug/ml.

**Immunohistochemistry Image:**



Anti-IVL / Involucrin antibody IHC of human lung. Immunohistochemistry of formalin-fixed, paraffin-embedded tissue after heat-induced antigen retrieval. Antibody LS-B3058 concentration 10 ug/ml.

**Immunohistochemistry Image:**



Anti-IVL / Involucrin antibody IHC of human tonsil. Immunohistochemistry of formalin-fixed, paraffin-embedded tissue after heat-induced antigen retrieval. Antibody LS-B3058 concentration 10 ug/ml.

**Requested From:**

Japan

Laboratory Reagent For In Vitro Research Use Only

Not for resale without prior written consent from LifeSpan BioSciences, Inc.

Created on 9/23/2014

© 2014 LifeSpan BioSciences