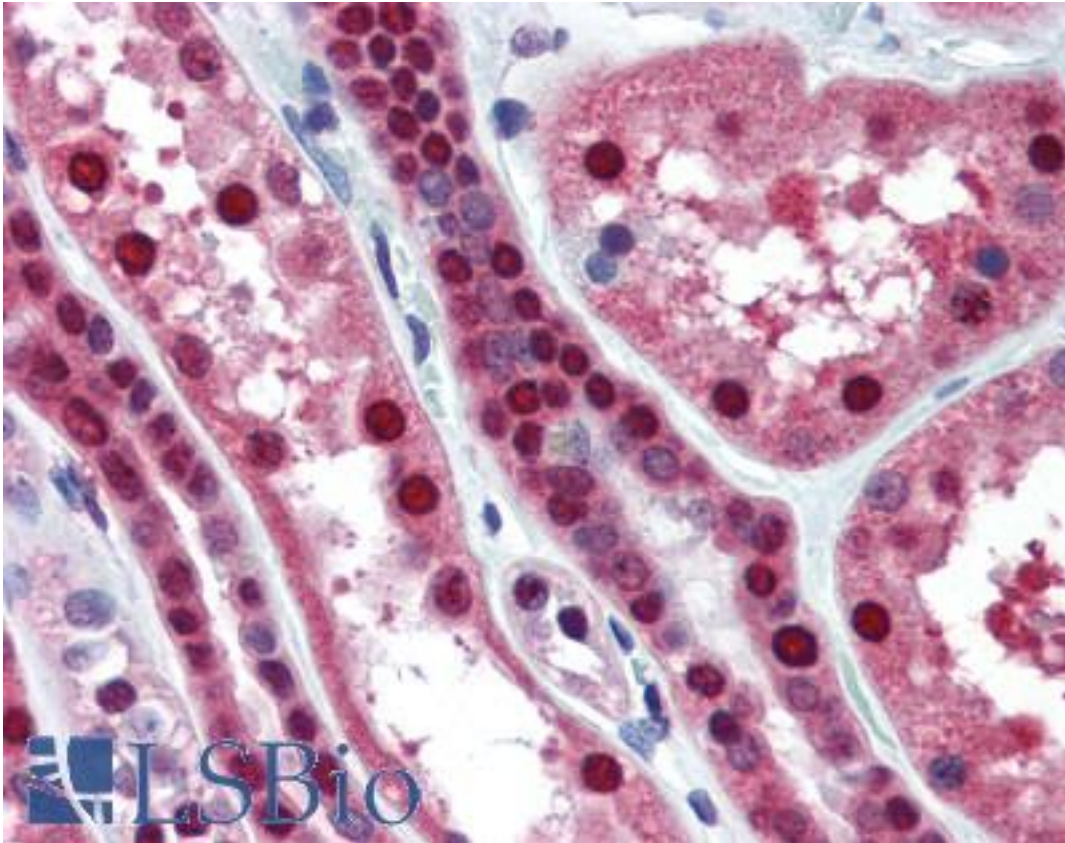


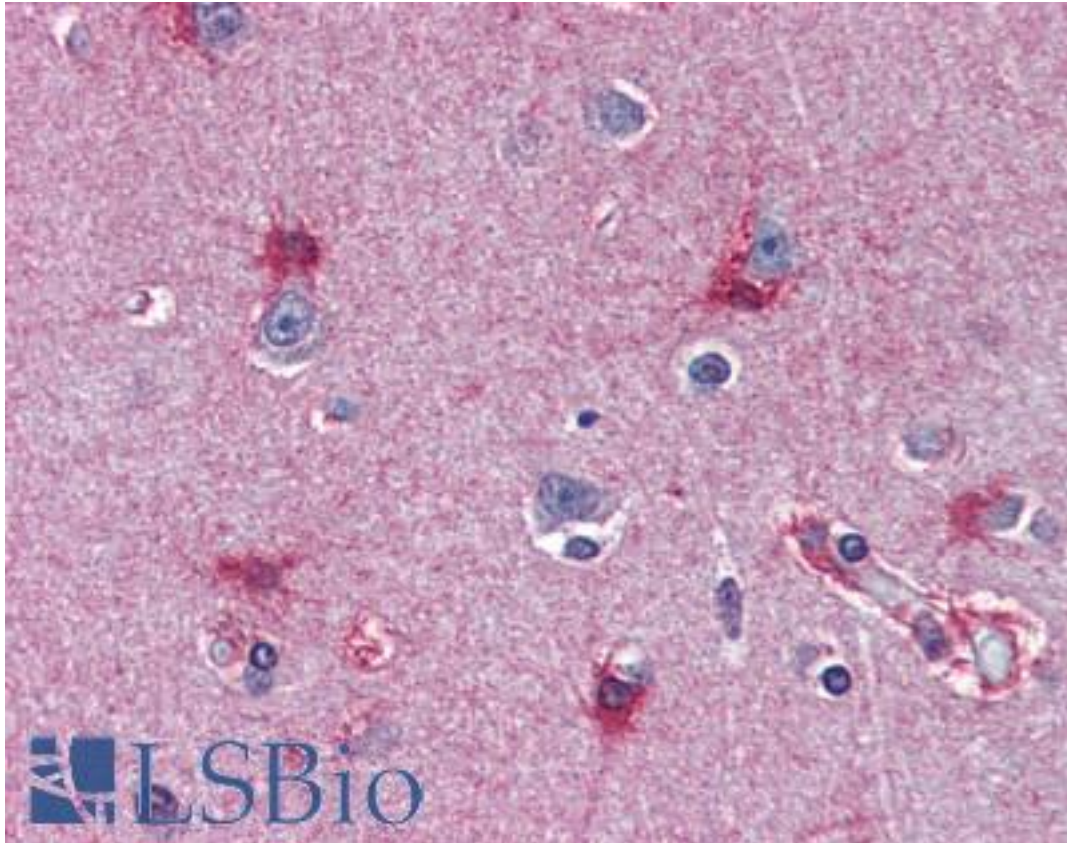
MAT2A Mouse anti-Human Monoclonal (aa1-395) (AT3A2) Antibody - LS-B3055 - LSBio	
CatalogID:	LS-B3055
Validation:	This antibody replaces catalog number LS-C93832. It has been validated for use in the following assays: IHC-P.
Target:	methionine adenosyltransferase II, alpha (MAT2A)
Synonyms:	MAT2A Antibody, AdoMet synthase 2 Antibody, AMS2 Antibody, AdoMet synthetase 2 Antibody, MATA2 Antibody, MATII Antibody, MAT 2 Antibody, MAT-II Antibody, SAMS2 Antibody
Host	MAT2A antibody was produced in Mouse
Clonality:	Monoclonal
Isotype:	IgG2b,k
Clone Name:	AT3A2
Immunogen Species:	MAT2A antibody was raised against Human
Immunogen:	MAT2A antibody was raised against recombinant human MAT2A (1-395aa) purified from E. coli.
Epitope:	aa1-395
Reactivity:	Human
Purification:	Protein G purified
Presentation:	PBS, pH 7.4, 0.1% sodium azide. Sourced in Ascites.
Recommended Storage:	Short term 4°C, long term aliquot and store at -20°C, avoid freeze thaw cycles.
Usage Summary:	Immunohistochemistry: LS-B3055 was validated for use in immunohistochemistry on a panel of 21 formalin-fixed, paraffin-embedded (FFPE) human tissues after heat induced antigen retrieval in pH 6.0 citrate buffer. After incubation with the primary antibody, slides were incubated with biotinylated secondary antibody, followed by alkaline phosphatase-streptavidin and chromogen. The stained slides were evaluated by a pathologist to confirm staining specificity. The optimal working concentration for LS-B3055 was determined to be 10 ug/ml.
Uses:	IHC - Paraffin (10 µg/ml), Western blot (1:1000 - 1:2000), ELISA (Optimal dilution to be determined by the researcher)
Size:	50 µl
Concentration:	1 mg/ml

Immunohistochemistry Image:



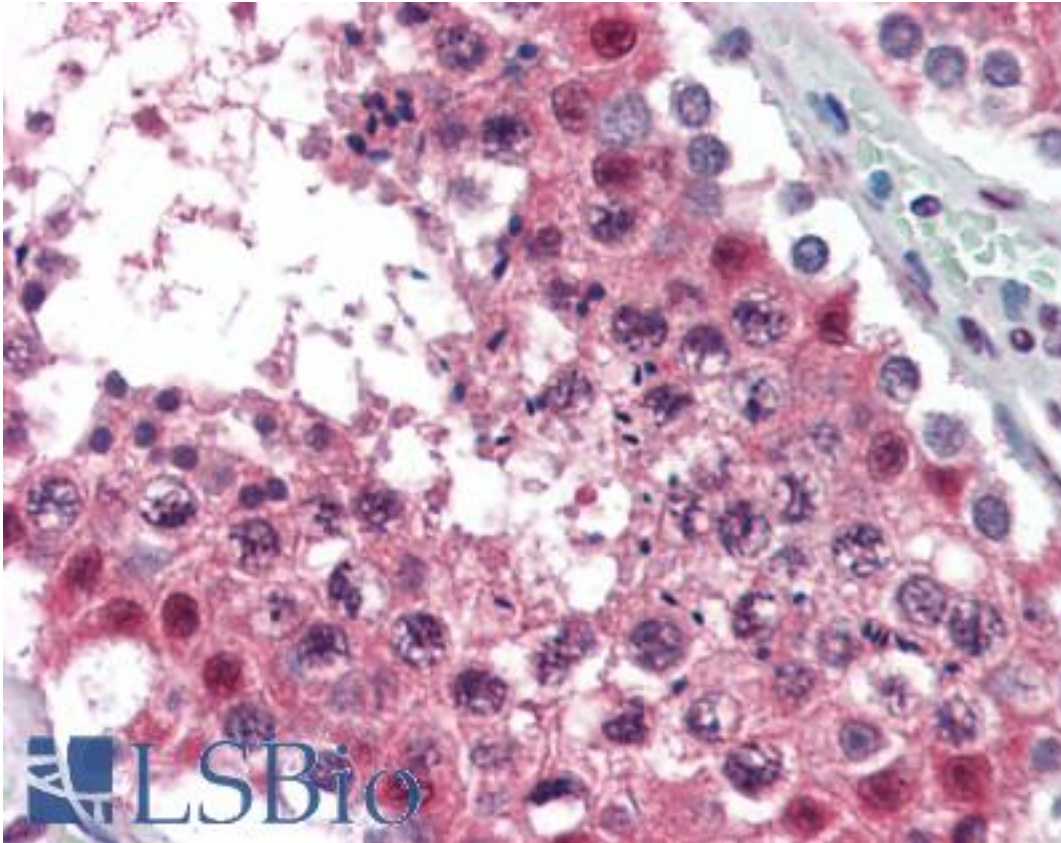
Anti-MAT2A antibody IHC of human kidney. Immunohistochemistry of formalin-fixed, paraffin-embedded tissue after heat-induced antigen retrieval. Antibody LS-B3055 concentration 10 ug/ml.

Immunohistochemistry Image:



Anti-MAT2A antibody IHC of human brain, cortex. Immunohistochemistry of formalin-fixed, paraffin-embedded tissue after heat-induced antigen retrieval. Antibody LS-B3055 concentration 10 ug/ml.

Immunohistochemistry Image:



Anti-MAT2A antibody IHC of human testis. Immunohistochemistry of formalin-fixed, paraffin-embedded tissue after heat-induced antigen retrieval. Antibody LS-B3055 concentration 10 ug/ml.

Requested From:

Japan

Laboratory Reagent For In Vitro Research Use Only

Not for resale without prior written consent from LifeSpan BioSciences, Inc.

Created on 9/23/2014

© 2014 LifeSpan BioSciences