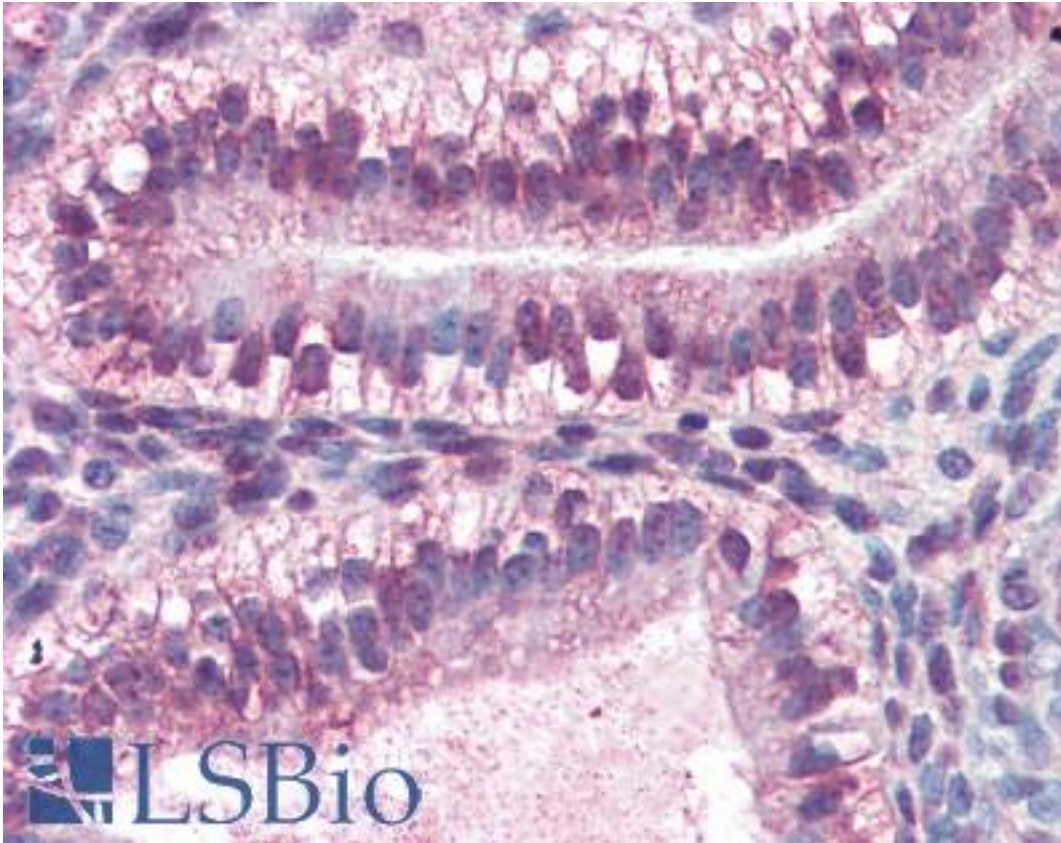


CRABP2 Mouse anti-Human Monoclonal (aa1-138) (AT2E11) Antibody - LS-B3052 - LSBio	
CatalogID:	LS-B3052
Validation:	This antibody replaces catalog number LS-C93828. It has been validated for use in the following assays: IHC-P.
Target:	cellular retinoic acid binding protein 2 (CRABP2)
Synonyms:	CRABP2 Antibody, CRABP-II Antibody, RBP6 Antibody
Host	CRABP2 antibody was produced in Mouse
Clonality:	Monoclonal
Isotype:	IgG2a,k
Clone Name:	AT2E11
Immunogen Species:	CRABP2 antibody was raised against Human
Immunogen:	CRABP2 antibody was raised against recombinant human CRABP2 (1-138aa) purified from E. coli.
Epitope:	aa1-138
Reactivity:	Human
Purification:	Protein G purified
Presentation:	PBS, pH 7.4, 0.1% sodium azide. Sourced in Ascites.
Recommended Storage:	Short term 4°C, long term aliquot and store at -20°C, avoid freeze thaw cycles.
Usage Summary:	Immunohistochemistry: LS-B3052 was validated for use in immunohistochemistry on a panel of 21 formalin-fixed, paraffin-embedded (FFPE) human tissues after heat induced antigen retrieval in pH 6.0 citrate buffer. After incubation with the primary antibody, slides were incubated with biotinylated secondary antibody, followed by alkaline phosphatase-streptavidin and chromogen. The stained slides were evaluated by a pathologist to confirm staining specificity. The optimal working concentration for LS-B3052 was determined to be 10 ug/ml.
Uses:	IHC - Paraffin (10 µg/ml), Western blot (1:250 - 1:1000), ELISA (Optimal dilution to be determined by the researcher)
Size:	50 µl
Concentration:	1 mg/ml

Immunohistochemistry Image:



Anti-CRABP2 antibody IHC of human uterus. Immunohistochemistry of formalin-fixed, paraffin-embedded tissue after heat-induced antigen retrieval. Antibody LS-B3052 concentration 10 ug/ml.

Requested From:

Japan

Laboratory Reagent For In Vitro Research Use Only

Not for resale without prior written consent from LifeSpan BioSciences, Inc.

Created on 9/23/2014

© 2014 LifeSpan BioSciences