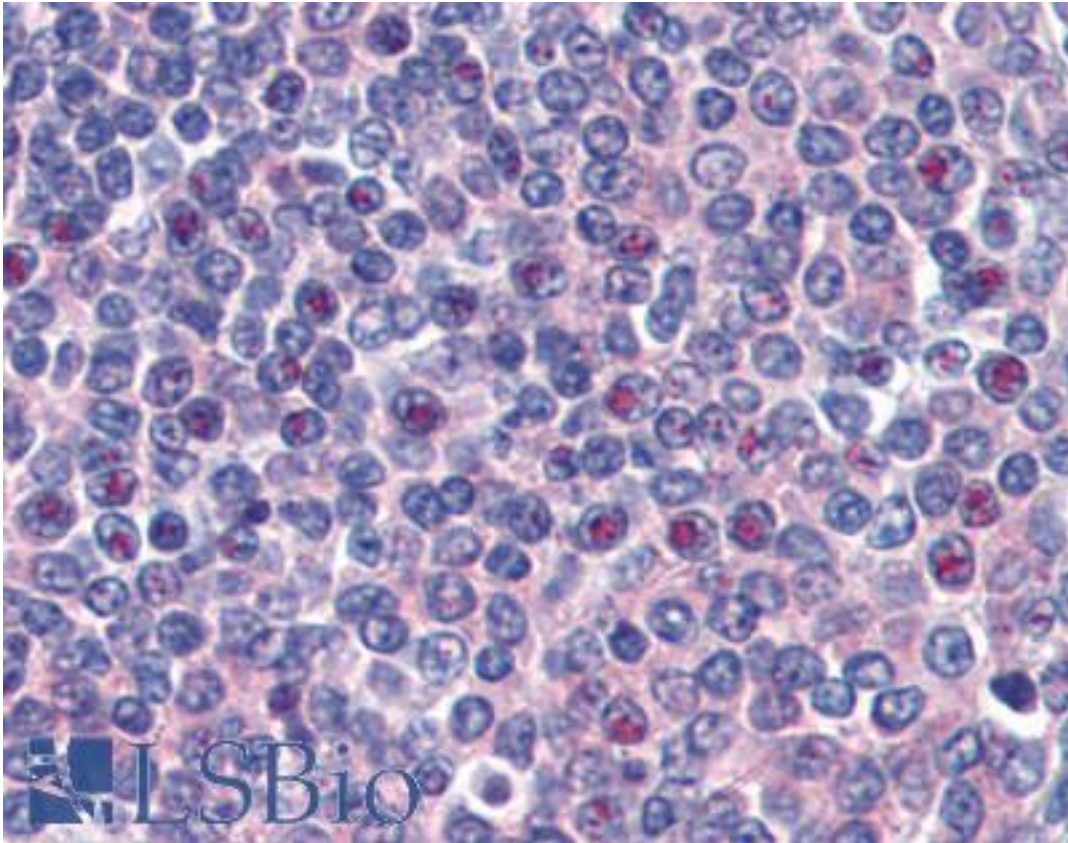


CENPF / CENP-F Mouse anti-Human Monoclonal (aa1759-2093) (14C10 1D8) Antibody - LS-B3046 - LSBio

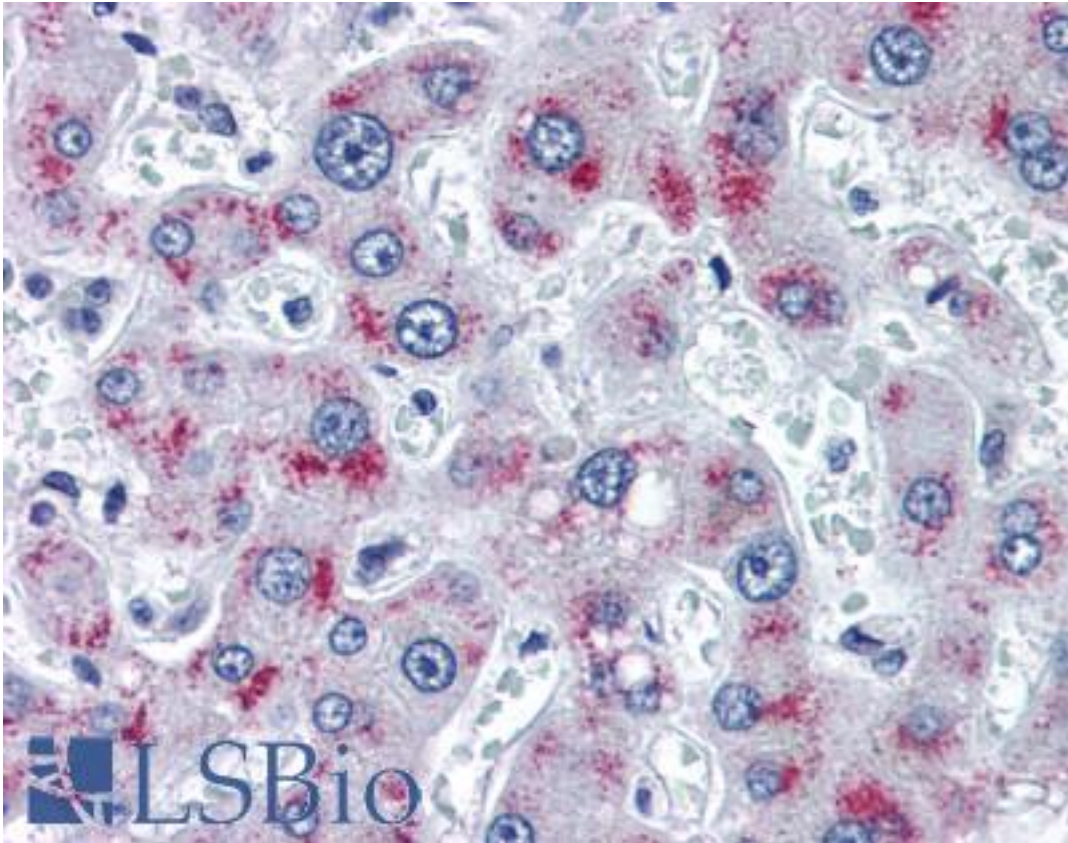
<b>CatalogID:</b>	LS-B3046
<b>Validation:</b>	This antibody replaces catalog number LS-C19955. It has been validated for use in the following assays: IHC-P.
<b>Target:</b>	centromere protein F, 350/400kDa (CENPF)
<b>Synonyms:</b>	CENPF Antibody, AH antigen Antibody, Centromere protein F Antibody, CENF Antibody, CENP-F Antibody, Kinetochore protein CENPF Antibody, Mitosin Antibody, CENP-F kinetochore protein Antibody, Hcp-1 Antibody, PRO1779 Antibody
<b>Host</b>	CENPF antibody was produced in Mouse
<b>Clonality:</b>	Monoclonal
<b>Isotype:</b>	IgG2a
<b>Clone Name:</b>	14C10 1D8
<b>Immunogen Species:</b>	CENPF / CENP-F antibody was raised against Human
<b>Immunogen:</b>	CENPF / CENP-F antibody was raised against recombinant human CENPF.
<b>Specificity:</b>	Reacts with human Mitosin.
<b>Epitope:</b>	aa1759-2093
<b>Reactivity:</b>	Human
<b>Purification:</b>	Protein G purified
<b>Presentation:</b>	PBS buffer , pH 7.2
<b>Recommended Storage:</b>	Long term: -20°C; Short term: +4°C; Avoid freeze-thaw cycles.
<b>Usage Summary:</b>	Immunohistochemistry: LS-B3046 was validated for use in immunohistochemistry on a panel of 21 formalin-fixed, paraffin-embedded (FFPE) human tissues after heat induced antigen retrieval in pH 6.0 citrate buffer. After incubation with the primary antibody, slides were incubated with biotinylated secondary antibody, followed by alkaline phosphatase-streptavidin and chromogen. The stained slides were evaluated by a pathologist to confirm staining specificity. The optimal working concentration for LS-B3046 was determined to be 10 ug/ml.
<b>Uses:</b>	IHC - Paraffin (10 µg/ml), IHC - Frozen, Immunofluorescence, Western blot (1:500), Immunoprecipitation (Optimal dilution to be determined by the researcher)
<b>Size:</b>	50 µg
<b>Concentration:</b>	1 mg/ml

**Immunohistochemistry Image:**



Anti-CENPF antibody IHC of human spleen. Immunohistochemistry of formalin-fixed, paraffin-embedded tissue after heat-induced antigen retrieval. Antibody LS-B3046 concentration 10 ug/ml.

**Immunohistochemistry Image:**



Anti-CENPF antibody IHC of human liver. Immunohistochemistry of formalin-fixed, paraffin-embedded tissue after heat-induced antigen retrieval. Antibody LS-B3046 concentration 10 ug/ml.

**Requested From:**

Japan

Laboratory Reagent For In Vitro Research Use Only

Not for resale without prior written consent from LifeSpan BioSciences, Inc.

Created on 9/23/2014

© 2014 LifeSpan BioSciences