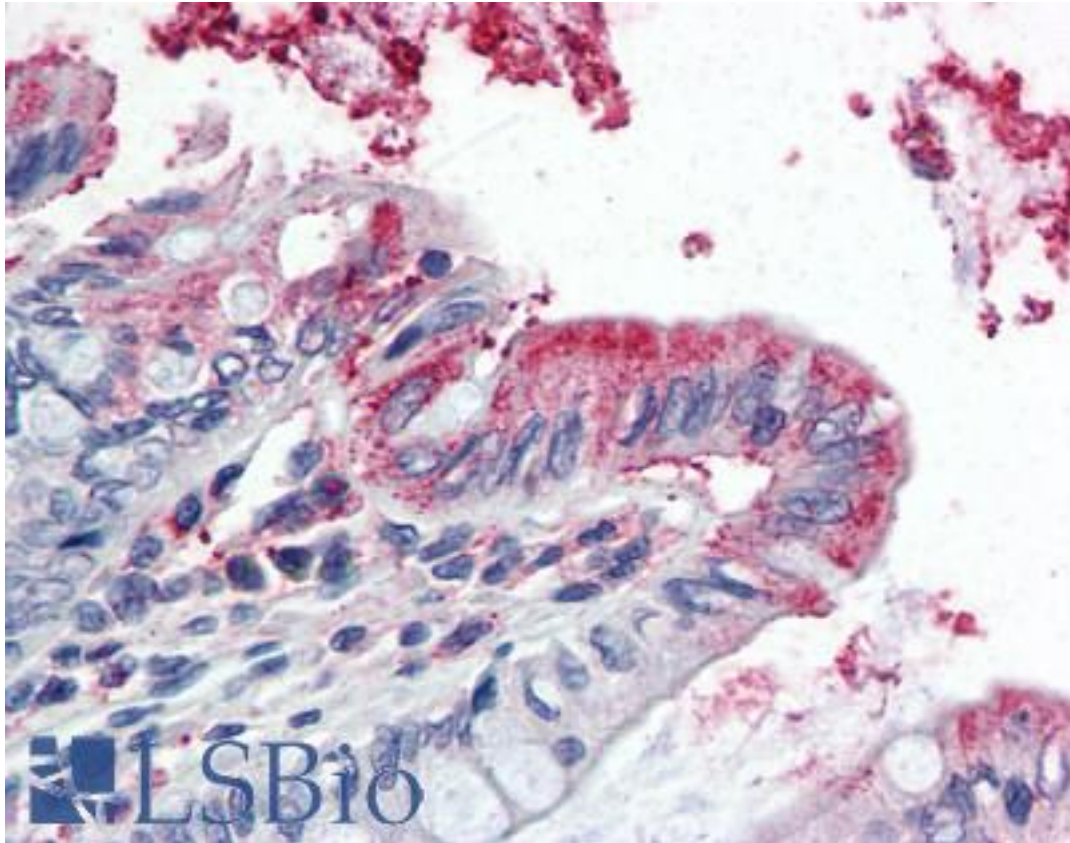


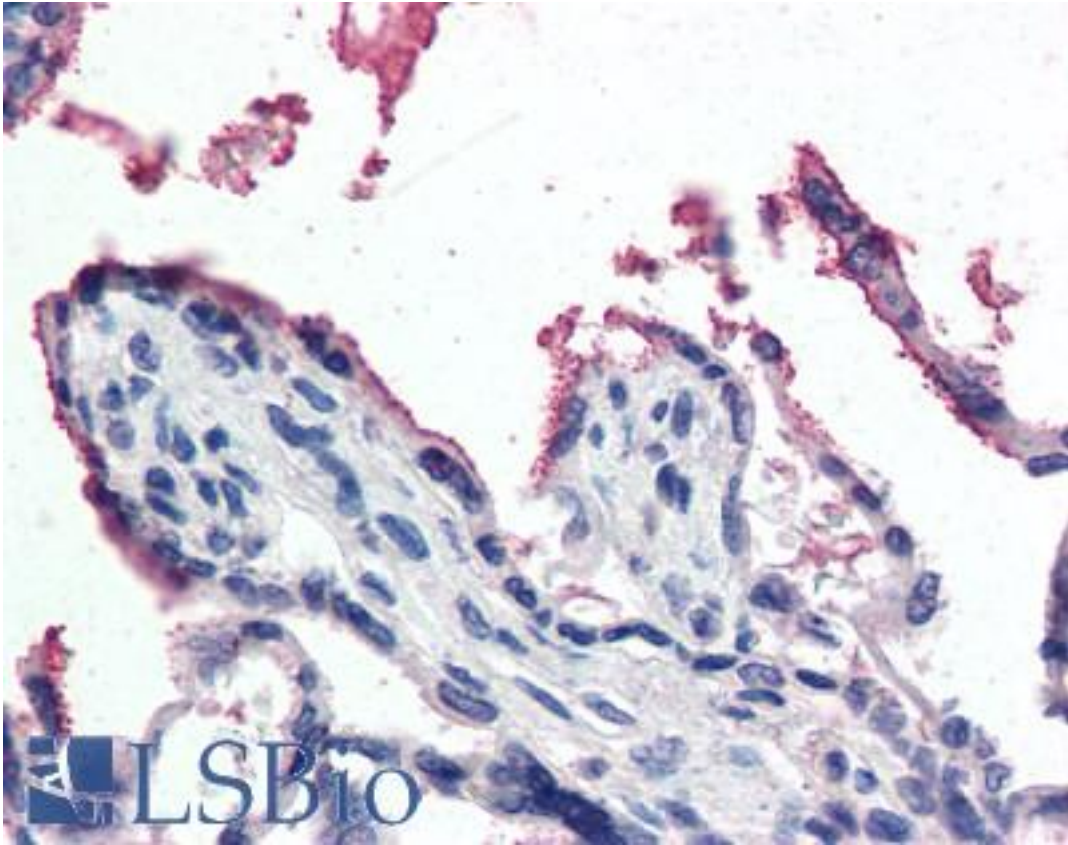
GPX3 Goat anti-Human Polyclonal (Internal) Antibody - LS-B3036 - LSBio	
CatalogID:	LS-B3036
Validation:	This antibody replaces catalog number LS-C54936. It has been validated for use in the following assays: IHC-P.
Target:	glutathione peroxidase 3 (plasma) (GPX3)
Synonyms:	GPX3 Antibody, Glutathione peroxidase 3 Antibody, GSHPx-3 Antibody, GPXP Antibody, GSHPx-P Antibody, GPx-3 Antibody, GPx-P Antibody, Plasma glutathione peroxidase Antibody
Host	GPX3 antibody was produced in Goat
Clonality:	Polyclonal
Immunogen Species:	GPX3 antibody was raised against Human
Antigen Type:	Synthetic peptide
Immunogen:	GPX3 antibody was raised against synthetic peptide C-NQFGKQEPGENSE from an internal region of human GPX3 (NP_002075.2). Percent identity by BLAST analysis: Human, Gorilla, Orangutan, Gibbon, Monkey, Marmoset, Mouse, Rat, Elephant, Panda, Dog, Bat, Bovine, Horse, Pig (100%); Rabbit, Opossum, Chicken (92%); Hamster, Zebrafish, Pseudomonas (85%).
Specificity:	Human GPX3. This antibody may cross-react with epididymis-specific GPX5 and olfactory epithelium-specific GPX6
Epitope:	Internal
Reactivity:	Human, Gorilla, Orangutan, Gibbon, Monkey, Mouse, Rat, Bat, Bovine, Dog, Horse, Pig
Predicted Reactivity:	Rabbit, Chicken
Purification:	Immunoaffinity purified
Presentation:	Tris-buffered saline, pH 7.3, 0.5% BSA, 0.02% sodium azide
Recommended Storage:	Store at -20°C. Minimize freezing and thawing.
Usage Summary:	Immunohistochemistry: LS-B3036 was validated for use in immunohistochemistry on a panel of 21 formalin-fixed, paraffin-embedded (FFPE) human tissues after heat induced antigen retrieval in pH 6.0 citrate buffer. After incubation with the primary antibody, slides were incubated with biotinylated secondary antibody, followed by alkaline phosphatase-streptavidin and chromogen. The stained slides were evaluated by a pathologist to confirm staining specificity. The optimal working concentration for LS-B3036 was determined to be 5 ug/ml.
Uses:	IHC - Paraffin (5 µg/ml), Western blot (1 - 3 µg/ml), ELISA (1:1000) (Optimal dilution to be determined by the researcher)
Size:	50 µg
Concentration:	0.5 mg/ml

Immunohistochemistry Image:



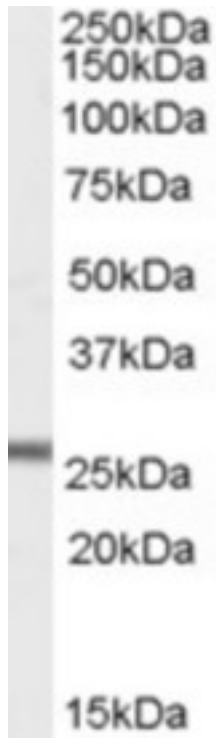
Anti-GPX3 antibody IHC of human colon. Immunohistochemistry of formalin-fixed, paraffin-embedded tissue after heat-induced antigen retrieval. Antibody LS-B3036 concentration 5 ug/ml.

Immunohistochemistry Image:



Anti-GPX3 antibody IHC of human placenta. Immunohistochemistry of formalin-fixed, paraffin-embedded tissue after heat-induced antigen retrieval. Antibody LS-B3036 concentration 5 ug/ml.

Western Blot Image:



Antibody (1 ug/ml) staining of Mouse Heart lysate (35 ug protein in RIPA buffer). Primary incubation was 1 hour. Detected by chemiluminescence.

Requested From:

Japan

Laboratory Reagent For In Vitro Research Use Only

Not for resale without prior written consent from LifeSpan BioSciences, Inc.

Created on 9/23/2014

© 2014 LifeSpan BioSciences