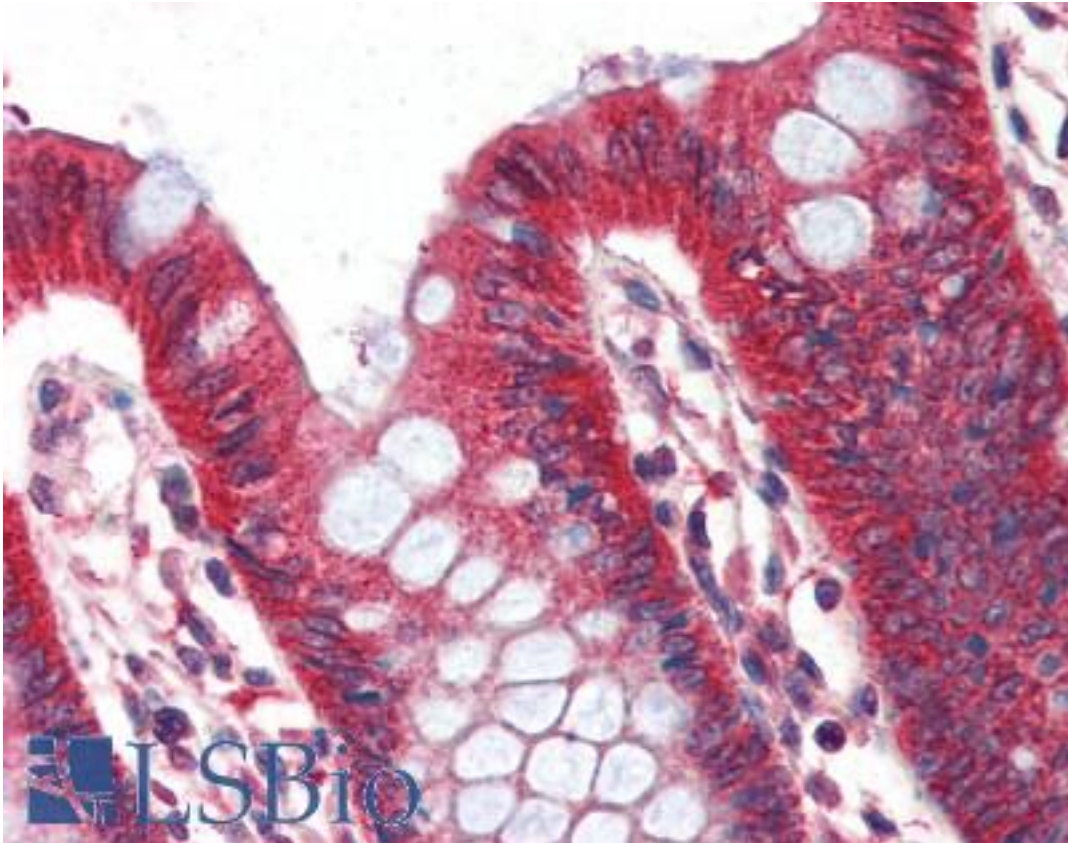


PLIN1 / Perilipin Goat anti-Human Polyclonal (Internal) Antibody - LS-B3034 - LSBio

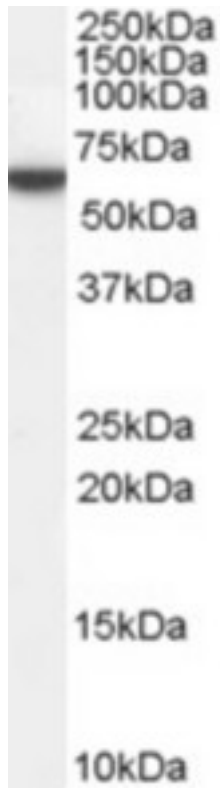
CatalogID:	LS-B3034
Validation:	This antibody replaces catalog number LS-C55265. It has been validated for use in the following assays: IHC-P.
Target:	perilipin 1 (PLIN1)
Synonyms:	PLIN1 Antibody, FPLD4 Antibody, PERI Antibody, Perilipin-1 Antibody, PLIN Antibody, Perilipin Antibody, Perilipin 1 Antibody
Host	PLIN1 antibody was produced in Goat
Clonality:	Polyclonal
Immunogen Species:	PLIN1 / Perilipin antibody was raised against Human
Antigen Type:	Synthetic peptide
Immunogen:	PLIN1 / Perilipin antibody was raised against synthetic peptide C- PREKPKRRVSDS from an internal region (near the C-terminus) of human PLIN1 / Perilipin (NP_002657.2). Percent identity by BLAST analysis: Human, Gibbon, Monkey, Marmoset (100%); Mouse, Rat, Hamster, Elephant, Bovine, Pig (92%); Gorilla, Panda, Bat, Horse, Opossum (83%).
Specificity:	Human PLIN1 / Perilipin.
Epitope:	Internal
Reactivity:	Human, Gibbon, Monkey
Predicted Reactivity:	Mouse, Rat, Bovine, Hamster, Pig
Purification:	Immunoaffinity purified
Presentation:	Tris-buffered saline, pH 7.3, 0.5% BSA, 0.02% sodium azide
Recommended Storage:	Store at -20°C. Minimize freezing and thawing.
Usage Summary:	Immunohistochemistry: LS-B3034 was validated for use in immunohistochemistry on a panel of 21 formalin-fixed, paraffin-embedded (FFPE) human tissues after heat induced antigen retrieval in pH 6.0 citrate buffer. After incubation with the primary antibody, slides were incubated with biotinylated secondary antibody, followed by alkaline phosphatase-streptavidin and chromogen. The stained slides were evaluated by a pathologist to confirm staining specificity. The optimal working concentration for LS-B3034 was determined to be 2 ug/ml.
Uses:	IHC - Paraffin (2 µg/ml), Western blot (0.01 µg/ml), ELISA (1:128000) (Optimal dilution to be determined by the researcher)
Uses Not Recommended:	Immunofluorescence
Size:	50 µg
Concentration:	0.5 mg/ml

Immunohistochemistry Image:



Anti-Perilipin antibody IHC of human colon. Immunohistochemistry of formalin-fixed, paraffin-embedded tissue after heat-induced antigen retrieval. Antibody LS-B3034 concentration 2 ug/ml.

Western Blot Image:



Antibody (0.01 ug/ml) staining of Human Adipose lysate (35 ug protein in RIPA buffer).
Primary incubation was 1 hour. Detected by chemiluminescence.

Requested From:

Japan

Laboratory Reagent For In Vitro Research Use Only

Not for resale without prior written consent from LifeSpan BioSciences, Inc.

Created on 9/23/2014

© 2014 LifeSpan BioSciences