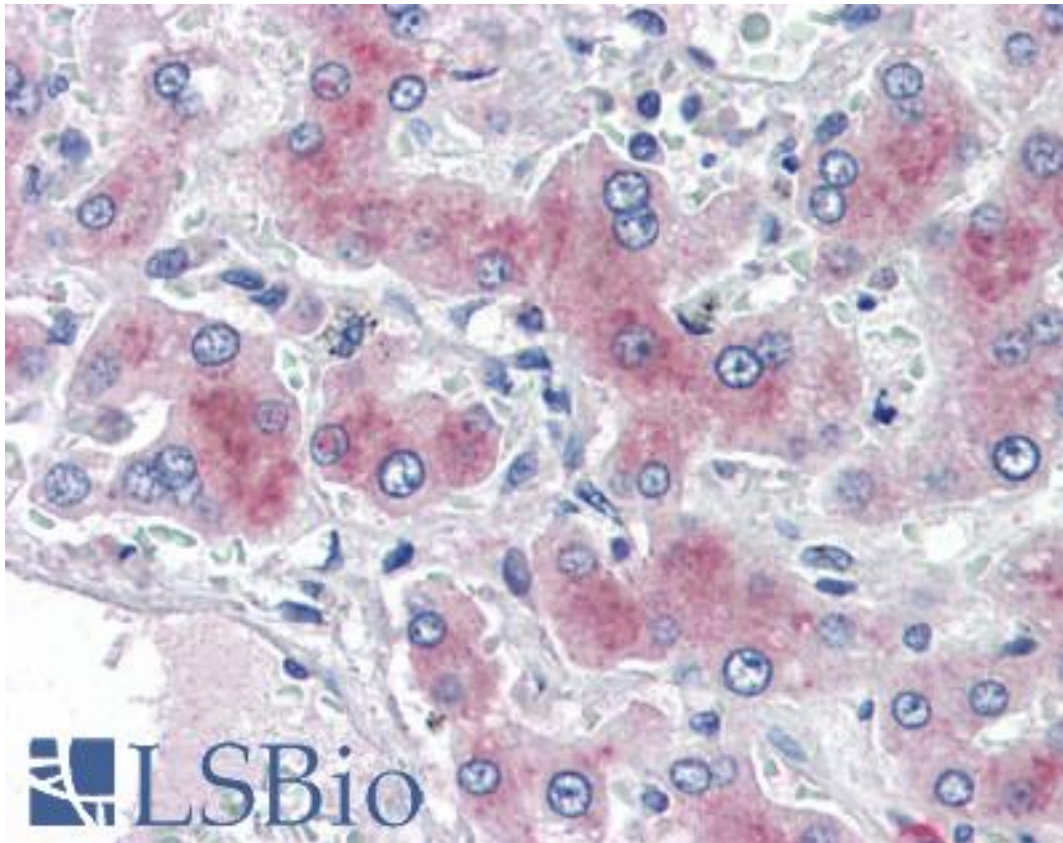


PCK1 Goat anti-Human Polyclonal (Internal) Antibody - LS-B3032 - LSBio

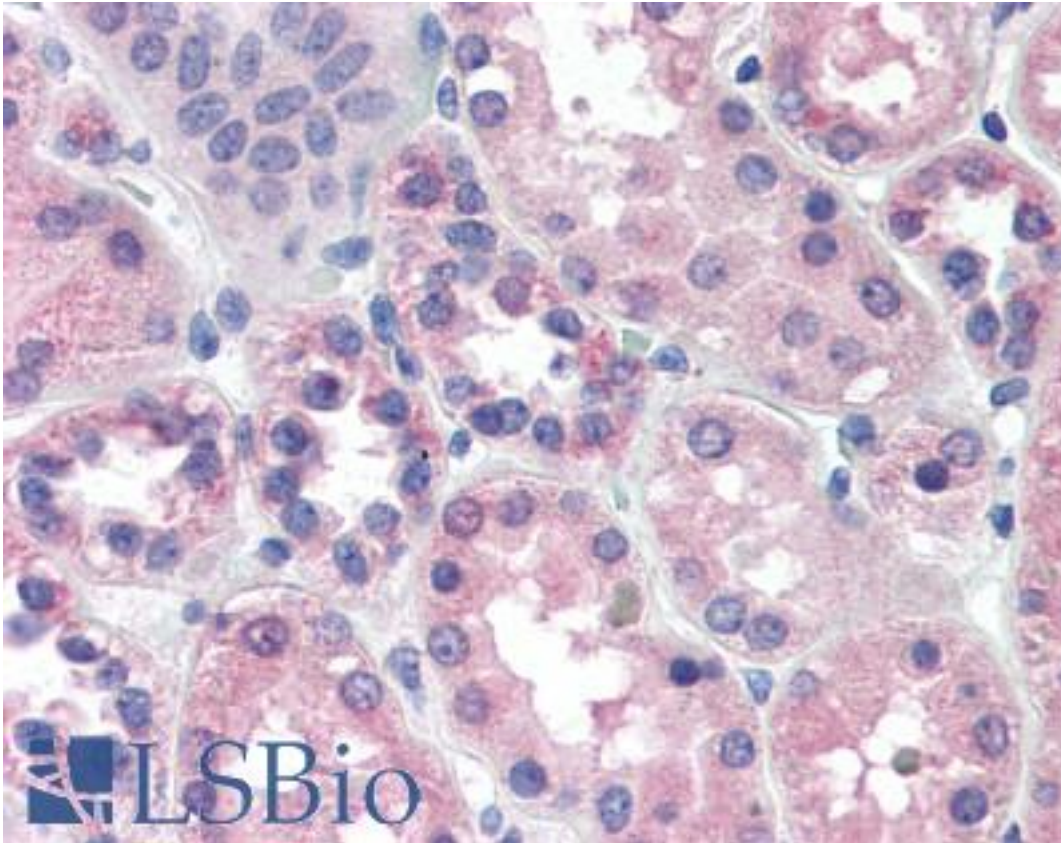
| | |
|------------------------------|---|
| CatalogID: | LS-B3032 |
| Validation: | This antibody replaces catalog number LS-C55244. It has been validated for use in the following assays: IHC-P. |
| Target: | phosphoenolpyruvate carboxykinase 1 (soluble) (PCK1) |
| Synonyms: | PCK1 Antibody, PEPCKC Antibody, Phosphopyruvate carboxylase Antibody, PEP carboxykinase Antibody, PEPCK-C Antibody, PEPCK1 Antibody |
| Host | PCK1 antibody was produced in Goat |
| Clonality: | Polyclonal |
| Immunogen Species: | PCK1 antibody was raised against Human |
| Antigen Type: | Synthetic peptide |
| Immunogen: | PCK1 antibody was raised against synthetic peptide C-HVNWFRKDKEGK from an internal region of human PCK1 (NP_002582.3). Percent identity by BLAST analysis: Human, Orangutan, Gibbon, Monkey, Marmoset, Panda, Dog, Bat, Horse, Rabbit, Opossum, Platypus (100%); Gorilla, Mouse, Rat, Hamster, Elephant, Xenopus (92%); Bovine, Pig, Turkey, Chicken, Drosophila, Mosquito, Ant (83%). |
| Specificity: | Human PCK1. |
| Epitope: | Internal |
| Reactivity: | Human, Orangutan, Gibbon, Monkey, Bat, Dog, Horse, Rabbit |
| Predicted Reactivity: | Gorilla, Mouse, Rat, Hamster, Xenopus |
| Purification: | Immunoaffinity purified |
| Presentation: | Tris-buffered saline, pH 7.3, 0.5% BSA, 0.02% sodium azide |
| Recommended Storage: | Store at -20°C. Minimize freezing and thawing. |
| Usage Summary: | Immunohistochemistry: LS-B3032 was validated for use in immunohistochemistry on a panel of 21 formalin-fixed, paraffin-embedded (FFPE) human tissues after heat induced antigen retrieval in pH 6.0 citrate buffer. After incubation with the primary antibody, slides were incubated with biotinylated secondary antibody, followed by alkaline phosphatase-streptavidin and chromogen. The stained slides were evaluated by a pathologist to confirm staining specificity. The optimal working concentration for LS-B3032 was determined to be 2 ug/ml. |
| Uses: | IHC - Paraffin (2 µg/ml), ELISA (1:8000) (Optimal dilution to be determined by the researcher) |
| Size: | 50 µg |
| Concentration: | 0.5 mg/ml |

Immunohistochemistry Image:



Anti-PCK1 antibody IHC of human liver. Immunohistochemistry of formalin-fixed, paraffin-embedded tissue after heat-induced antigen retrieval. Antibody LS-B3032 concentration 2 ug/ml.

Immunohistochemistry Image:



Anti-PCK1 antibody IHC of human kidney. Immunohistochemistry of formalin-fixed, paraffin-embedded tissue after heat-induced antigen retrieval. Antibody LS-B3032 concentration 2 ug/ml.

Requested From:

Japan

Laboratory Reagent For In Vitro Research Use Only

Not for resale without prior written consent from LifeSpan BioSciences, Inc.

Created on 9/23/2014

© 2014 LifeSpan BioSciences