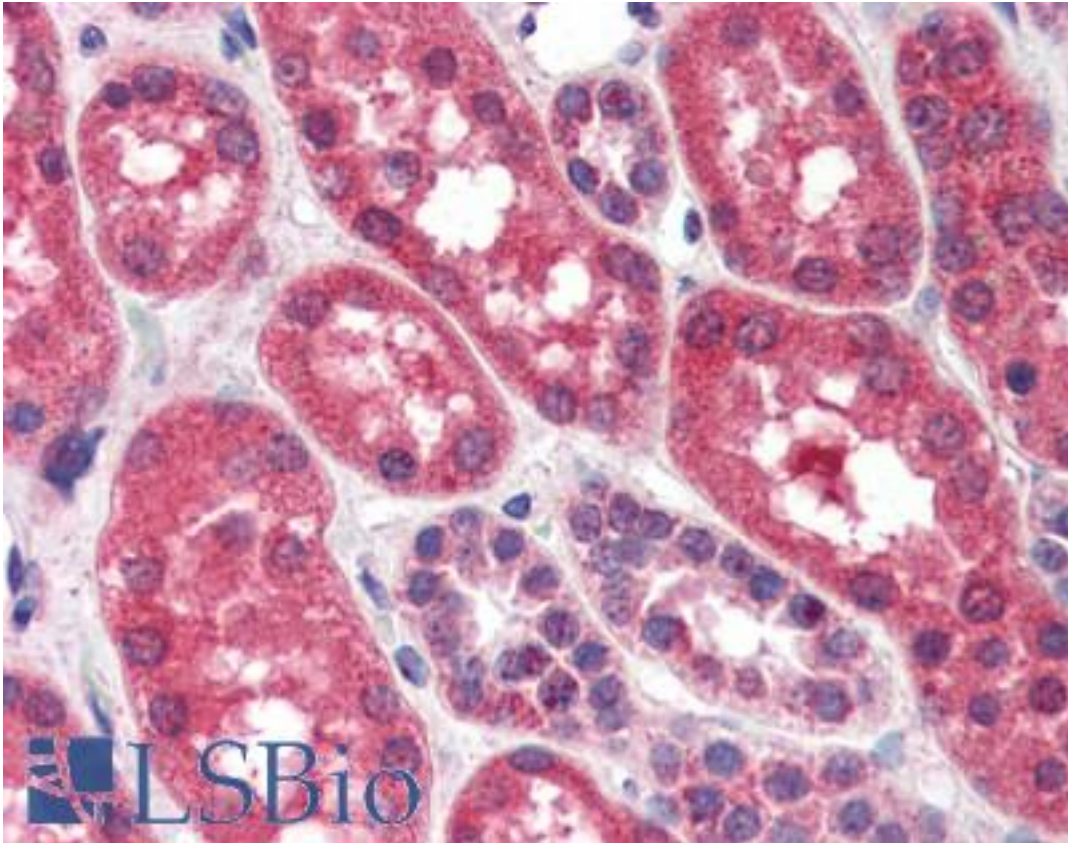


FGFR1 Goat anti-Human Polyclonal (C-Terminus) Antibody - LS-B3031 - LSBio	
<b>CatalogID:</b>	LS-B3031
<b>Validation:</b>	This antibody replaces catalog number LS-C54836. It has been validated for use in the following assays: IHC-P.
<b>Target:</b>	fibroblast growth factor receptor 1 (FGFR1)
<b>Synonyms:</b>	FGFR1 Antibody, BFGF receptor Antibody, BFGF-R Antibody, BFGF-R-1 Antibody, CD331 Antibody, Cek1 Antibody, CD331 antigen Antibody, FGFR1/PLAG1 fusion Antibody, FLT2 Antibody, Fgf-flg Antibody, FGFR Antibody, FGFR-1 Antibody, Fms-like tyrosine kinase 2 Antibody, HBGFR Antibody, HH2 Antibody, Hydroxyaryl-protein kinase Antibody, FGF receptor 1 Antibody, Fms-related tyrosine kinase 2 Antibody, Proto-oncogene c-Fgr Antibody, BFGFR Antibody, CEK Antibody, FLT-2 Antibody, HBGFR Antibody, KAL2 Antibody, OGD Antibody
<b>Family / Subfamily:</b>	Protein Kinase / FGF Receptor
<b>Host</b>	FGFR1 antibody was produced in Goat
<b>Clonality:</b>	Polyclonal
<b>Immunogen Species:</b>	FGFR1 antibody was raised against Human
<b>Antigen Type:</b>	Synthetic peptide
<b>Immunogen:</b>	FGFR1 antibody was raised against synthetic peptide CLPRHPAQLANGGLKR from the C-terminus of human FGFR1 (NP_075598.2; NP_056934.2; NP_075593.1; NP_075594.1; NP_075599.1). Percent identity by BLAST analysis: Human, Gorilla, Orangutan, Gibbon, Monkey, Marmoset, Elephant, Panda, Bovine, Dog, Bat, Horse, Platypus (100%); Rat, Hamster, Pig, Opossum (94%); Mouse, Rabbit (88%).
<b>Specificity:</b>	Human FGFR1. This antibody is expected to recognise five isoforms (as represented by NP_075598.2; NP_056934.2; NP_075593.1; NP_075594.1; NP_075599.1).
<b>Epitope:</b>	C-Terminus
<b>Reactivity:</b>	Human, Gorilla, Orangutan, Gibbon, Monkey, Bat, Bovine, Dog, Horse
<b>Predicted Reactivity:</b>	Rat, Hamster, Pig
<b>Purification:</b>	Immunoaffinity purified
<b>Presentation:</b>	Tris-buffered saline, pH 7.3, 0.5% BSA, 0.02% sodium azide
<b>Recommended Storage:</b>	Store at -20°C. Minimize freezing and thawing.
<b>Usage Summary:</b>	Immunohistochemistry: LS-B3031 was validated for use in immunohistochemistry on a panel of 21 formalin-fixed, paraffin-embedded (FFPE) human tissues after heat induced antigen retrieval in pH 6.0 citrate buffer. After incubation with the primary antibody, slides were incubated with biotinylated secondary antibody, followed by alkaline phosphatase-streptavidin and chromogen. The stained slides were evaluated by a pathologist to confirm staining specificity. The optimal working concentration for LS-B3031 was determined to be 4 ug/ml.
<b>Uses:</b>	IHC - Paraffin (4 µg/ml), Western blot (0.3 - 1 µg/ml), ELISA (1:32000) (Optimal dilution to be determined by the researcher)
<b>Size:</b>	50 µg

**Concentration:**

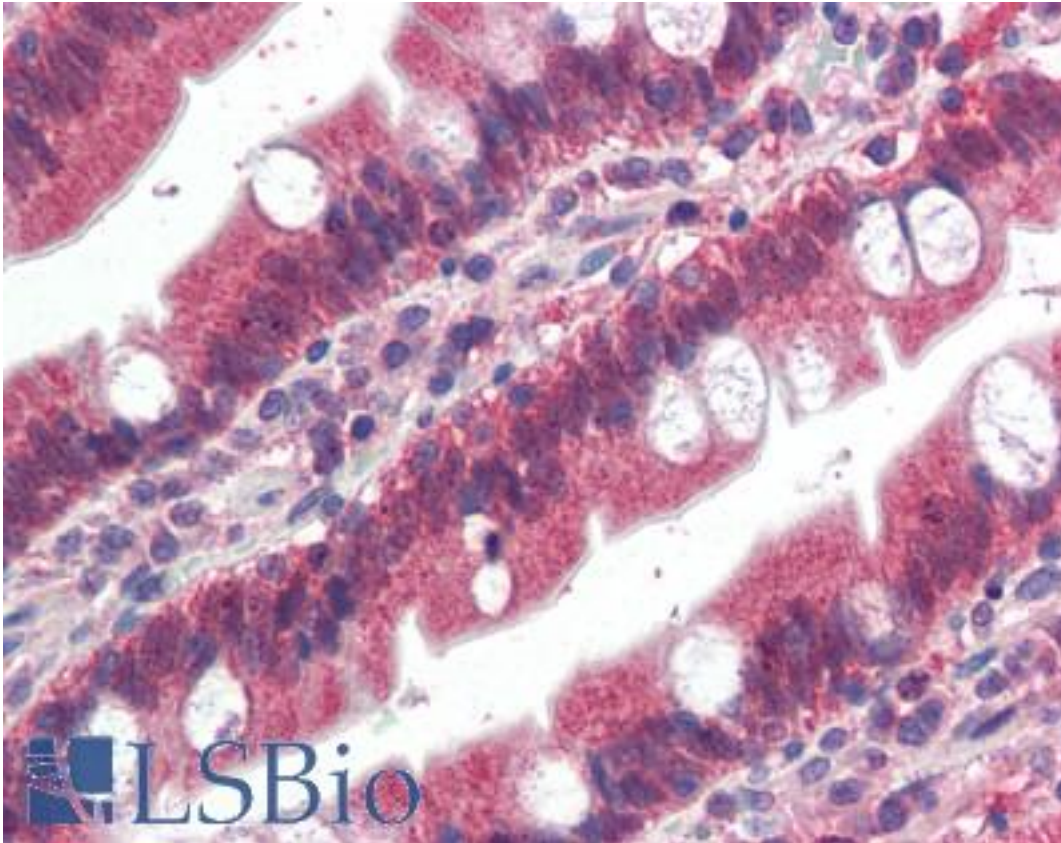
0.5 mg/ml

**Immunohistochemistry Image:**



Anti-FGFR1 antibody IHC of human kidney. Immunohistochemistry of formalin-fixed, paraffin-embedded tissue after heat-induced antigen retrieval. Antibody LS-B3031 concentration 4 ug/ml.

**Immunohistochemistry Image:**



Anti-FGFR1 antibody IHC of human small intestine. Immunohistochemistry of formalin-fixed, paraffin-embedded tissue after heat-induced antigen retrieval. Antibody LS-B3031 concentration 4 ug/ml.

**Western Blot Image:**



Antibody (0.3 ug/ml) staining of human breast lysate (35 ug protein in RIPA buffer). Primary incubation was 1 hour. Detected by chemiluminescence.

<b>Requested From:</b>	Japan
Laboratory Reagent For In Vitro Research Use Only	
Not for resale without prior written consent from LifeSpan BioSciences, Inc.	
Created on 9/23/2014	
© 2014 LifeSpan BioSciences	