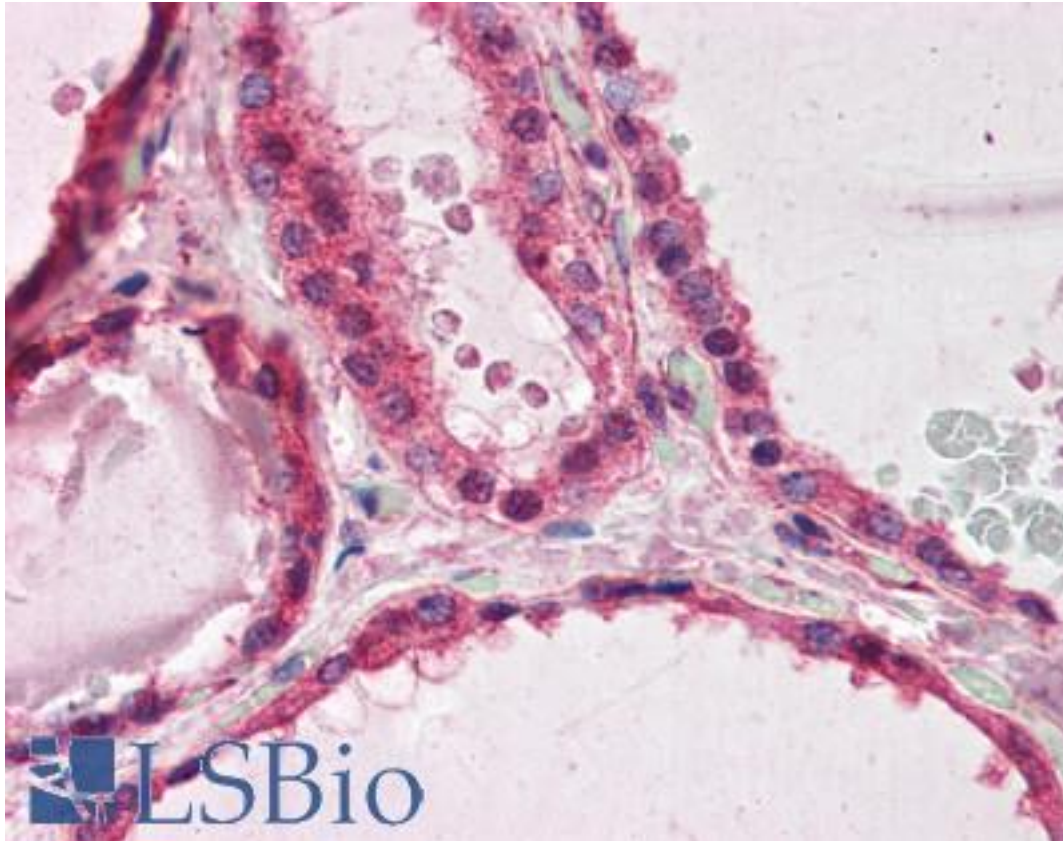


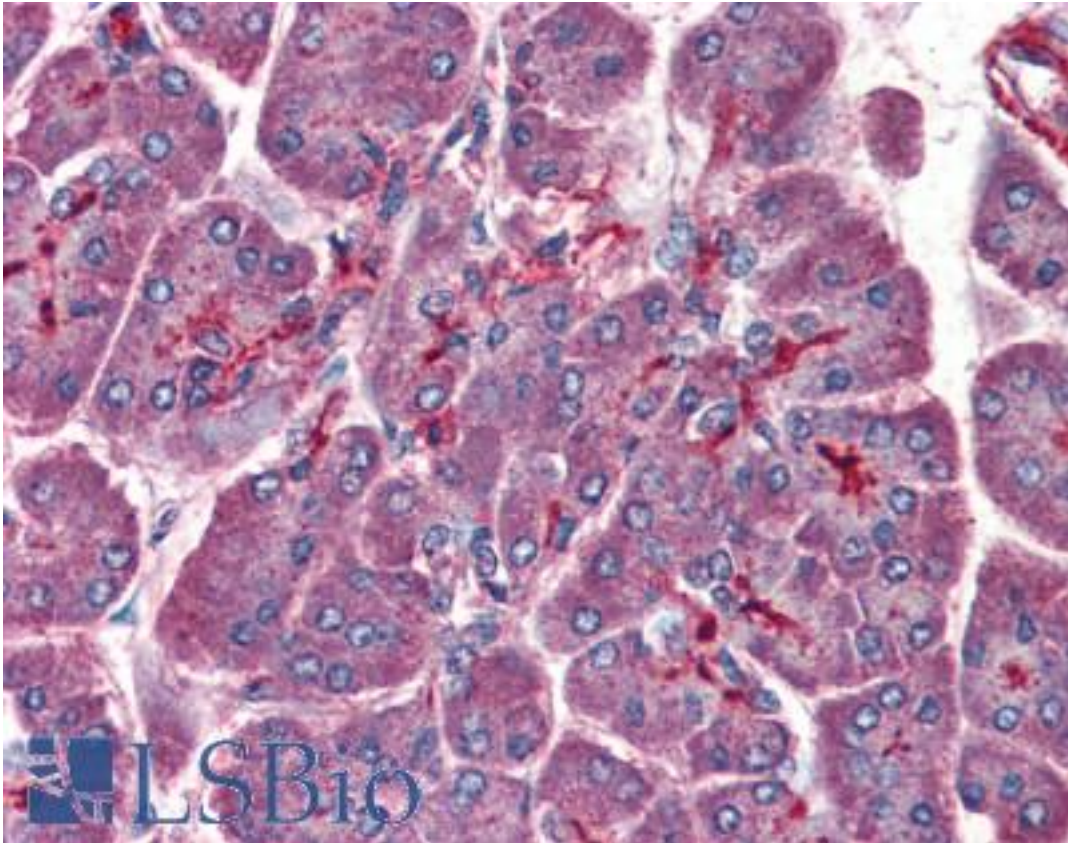
PAFAH1B1 / LIS1 Goat anti-Human Polyclonal Antibody - LS-B3029 - LSBio	
CatalogID:	LS-B3029
Validation:	This antibody replaces catalog number LS-C34643. It has been validated for use in the following assays: IHC-P.
Target:	platelet-activating factor acetylhydrolase 1b, regulatory subunit 1 (45kDa) (PAFAH1B1)
Synonyms:	PAFAH1B1 Antibody, LIS-1 Antibody, LIS2 Antibody, Lissencephaly 1 protein Antibody, Lissencephaly-1 protein Antibody, MDCR Antibody, MDS Antibody, PAFAHA Antibody, PAF-AH alpha Antibody, PAFAH Antibody, LIS1 Antibody, PAF-AH 45 kDa subunit Antibody, PAFAH alpha Antibody
Host	PAFAH1B1 antibody was produced in Goat
Clonality:	Polyclonal
Immunogen Species:	PAFAH1B1 / LIS1 antibody was raised against Human
Antigen Type:	Synthetic peptide
Immunogen:	PAFAH1B1 / LIS1 antibody was raised against synthetic peptide TGSVDQTVKWEER from the C-terminus of human PAFAH1B1 / LIS1 (NP_000421.1). Percent identity by BLAST analysis: Human, Gorilla, Orangutan, Gibbon, Monkey, Marmoset, Mouse, Rat, Hamster, Elephant, Panda, Dog, Bat, Bovine, Cat, Horse, Rabbit, Pig, Opossum, Turkey, Chicken, Platypus, Xenopus, Salmon, Stickleback, Pufferfish, Zebrafish, Water flea, Tick (100%); Chimpanzee, Drosophila, Ant, Capsaspora (93%); Catfish, Mosquito, Sea anemone, Beetle, Trichoplax (86%).
Specificity:	Human PAFAH1B1 / LIS1.
Reactivity:	Human, Gorilla, Orangutan, Gibbon, Monkey, Mouse, Rat, Bat, Bovine, Dog, Hamster, Horse, Pig, Rabbit, Chicken, Xenopus, Zebrafish
Predicted Reactivity:	Chimpanzee, Drosophila
Purification:	Immunoaffinity purified
Presentation:	Tris-buffered saline, pH 7.3, 0.5% BSA, 0.02% sodium azide
Recommended Storage:	Store at -20°C. Minimize freezing and thawing.
Usage Summary:	Immunohistochemistry: LS-B3029 was validated for use in immunohistochemistry on a panel of 21 formalin-fixed, paraffin-embedded (FFPE) human tissues after heat induced antigen retrieval in pH 6.0 citrate buffer. After incubation with the primary antibody, slides were incubated with biotinylated secondary antibody, followed by alkaline phosphatase-streptavidin and chromogen. The stained slides were evaluated by a pathologist to confirm staining specificity. The optimal working concentration for LS-B3029 was determined to be 3.75 ug/ml.
Uses:	IHC - Paraffin (3.75 µg/ml), Western blot (1 - 3 µg/ml), ELISA (1:32000) (Optimal dilution to be determined by the researcher)
Size:	50 µg
Concentration:	0.5 mg/ml

Immunohistochemistry Image:



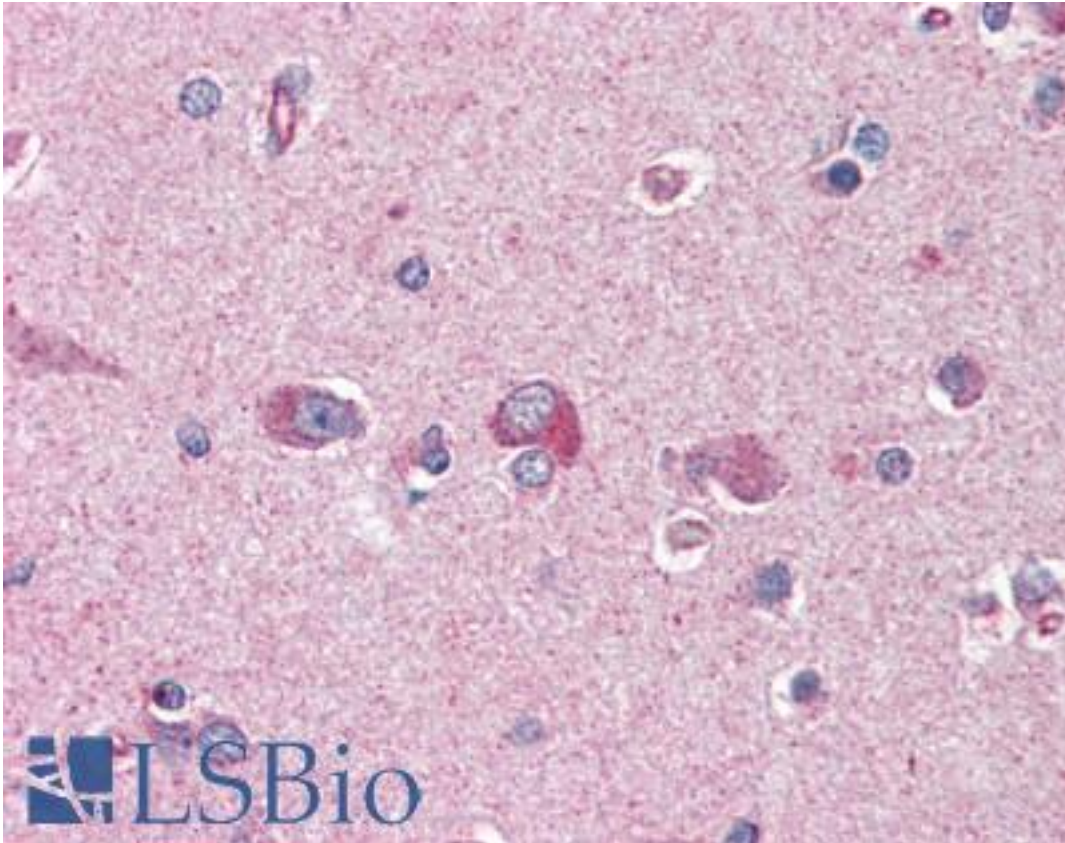
Anti-PAFAH1B1 / LIS1 antibody IHC of human thyroid. Immunohistochemistry of formalin-fixed, paraffin-embedded tissue after heat-induced antigen retrieval. Antibody LS-B3029 concentration 75 ug/ml.

Immunohistochemistry Image:



Anti-PAFAH1B1 / LIS1 antibody IHC of human pancreas. Immunohistochemistry of formalin-fixed, paraffin-embedded tissue after heat-induced antigen retrieval. Antibody LS-B3029 concentration 75 ug/ml.

Immunohistochemistry Image:



Anti-PAFAH1B1 / LIS1 antibody IHC of human brain, cortex. Immunohistochemistry of formalin-fixed, paraffin-embedded tissue after heat-induced antigen retrieval. Antibody LS-B3029 concentration 75 ug/ml.

Requested From:

Japan

Laboratory Reagent For In Vitro Research Use Only

Not for resale without prior written consent from LifeSpan BioSciences, Inc.

Created on 9/23/2014

© 2014 LifeSpan BioSciences