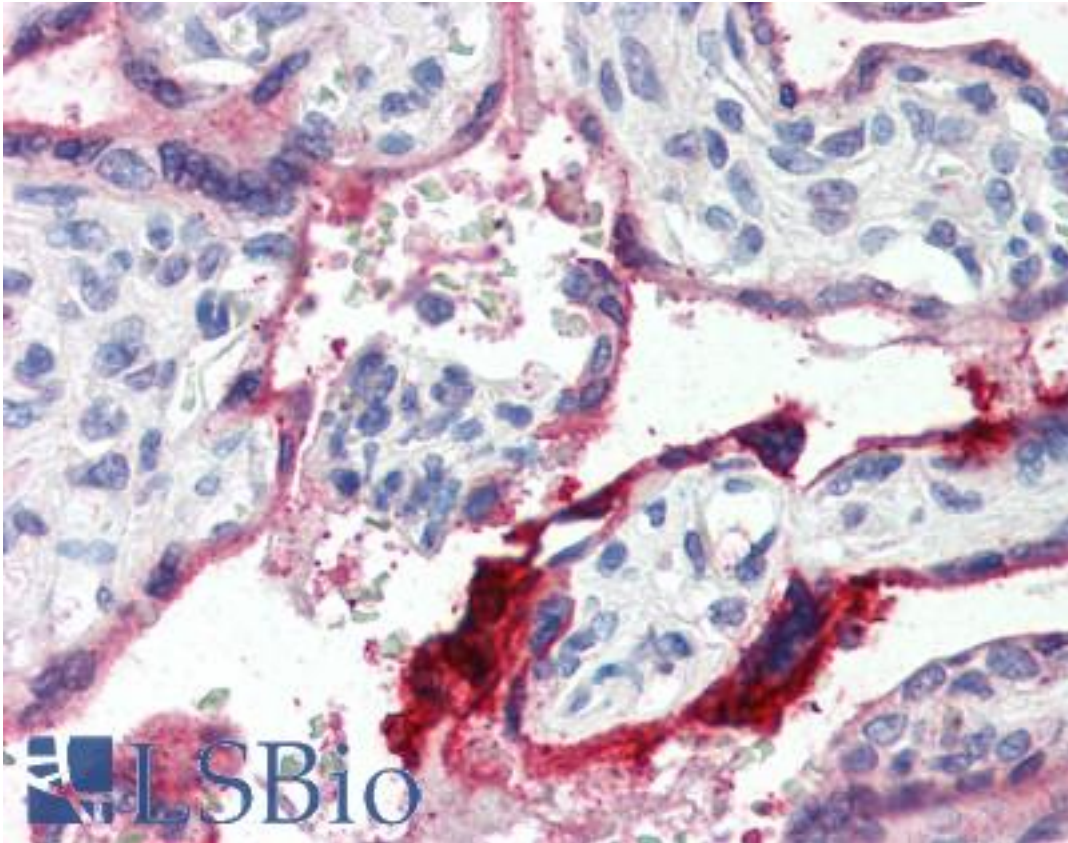


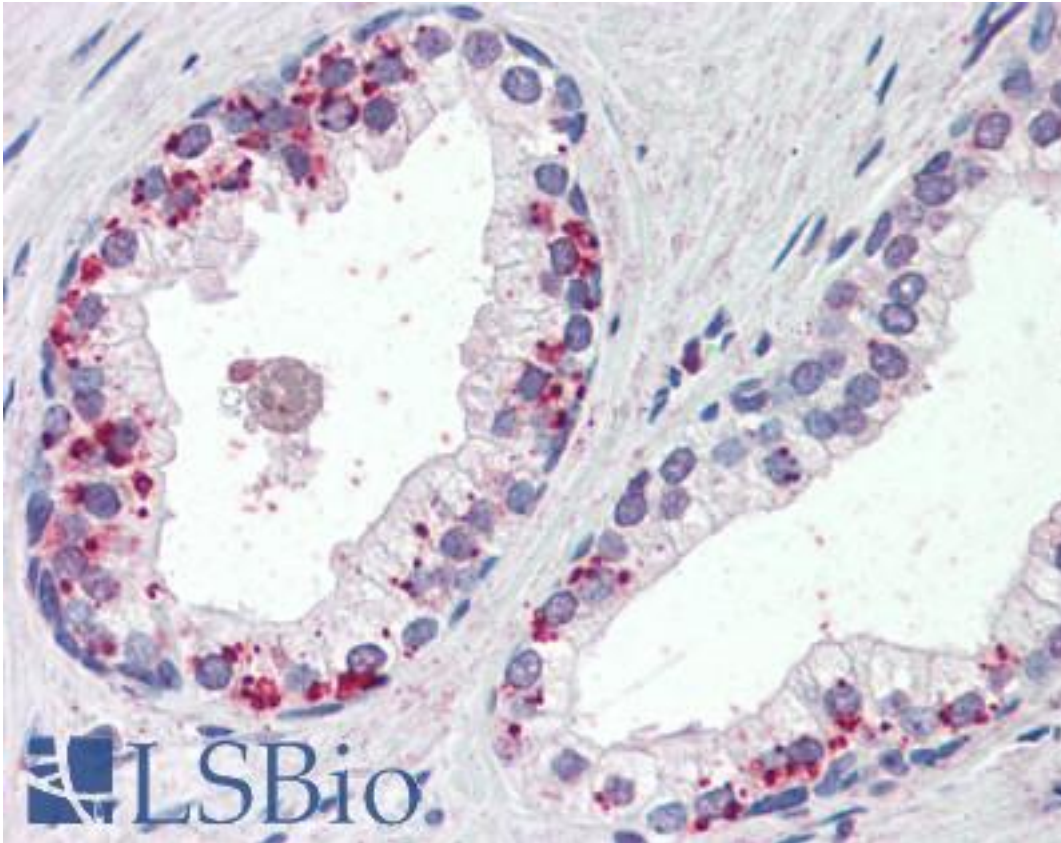
ANXA1 / Annexin A1 Goat anti-Human Polyclonal (C-Terminus) Antibody - LS-B3028 - LSBio	
CatalogID:	LS-B3028
Validation:	This antibody replaces catalog number LS-C87404. It has been validated for use in the following assays: IHC-P.
Target:	annexin A1 (ANXA1)
Synonyms:	ANXA1 Antibody, Annexin A1 Antibody, Annexin I Antibody, Annexin-1 Antibody, ANX1 Antibody, Calpactin II Antibody, Chromobindin-9 Antibody, Lipocortin I Antibody, Annexin I (lipocortin I) Antibody, Calpactin-2 Antibody, LPC1 Antibody
Host	ANXA1 antibody was produced in Goat
Clonality:	Polyclonal
Immunogen Species:	ANXA1 / Annexin A1 antibody was raised against Human
Antigen Type:	Synthetic peptide
Immunogen:	ANXA1 / Annexin A1 antibody was raised against synthetic peptide CQAILDETKGDY EK from the C-terminus of human ANXA1 / Annexin A1 (NP_000691.1). Percent identity by BLAST analysis: Human, Chimpanzee, Gorilla, Orangutan, Gibbon, Monkey, Marmoset, Mouse, Rat, Hamster, Dog, Bat, Bovine, Horse, Rabbit, Pig, Opossum, Guinea pig (100%); Platypus (93%); Lizard (86%).
Specificity:	Human ANXA1 / Annexin A1.
Epitope:	C-Terminus
Reactivity:	Human, Chimpanzee, Gorilla, Orangutan, Gibbon, Monkey, Mouse, Rat, Bat, Bovine, Dog, Guinea pig, Hamster, Horse, Pig, Rabbit
Purification:	Immunoaffinity purified
Presentation:	Tris-buffered saline, pH 7.3, 0.5% BSA, 0.02% sodium azide
Recommended Storage:	Store at -20°C. Minimize freezing and thawing.
Usage Summary:	Immunohistochemistry: LS-B3028 was validated for use in immunohistochemistry on a panel of 21 formalin-fixed, paraffin-embedded (FFPE) human tissues after heat induced antigen retrieval in pH 6.0 citrate buffer. After incubation with the primary antibody, slides were incubated with biotinylated secondary antibody, followed by alkaline phosphatase-streptavidin and chromogen. The stained slides were evaluated by a pathologist to confirm staining specificity. The optimal working concentration for LS-B3028 was determined to be 4 ug/ml. Peptide ELISA: antibody detection limit dilution 1:32000. Western Blot: Approx 35kD band observed in Human lysates of cell lines A431 and K562 (calculated MW of 38.7kD according to NP_000691.1). The observed molecular weight corresponds to earlier findings in literature with different antibodies (Paweletz et al, Cancer Res. 2000 Nov15;60(22):6293-7. PMID: 11103786). Recommended concentration: 0.5-1.5 ug/ml.
Uses:	IHC - Paraffin (4 µg/ml), Western blot (0.5 - 1.5 µg/ml), ELISA (1:32000) (Optimal dilution to be determined by the researcher)
Size:	50 µg
Concentration:	0.5 mg/ml

Immunohistochemistry Image:



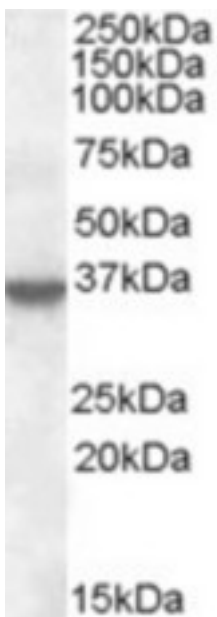
Anti-Annexin A1 antibody IHC of human placenta. Immunohistochemistry of formalin-fixed, paraffin-embedded tissue after heat-induced antigen retrieval. Antibody LS-B3028 concentration 4 ug/ml.

Immunohistochemistry Image:



Anti-Annexin A1 antibody IHC of human prostate. Immunohistochemistry of formalin-fixed, paraffin-embedded tissue after heat-induced antigen retrieval. Antibody LS-B3028 concentration 4 ug/ml.

Western Blot Image:



Antibody (0.5 ug/ml) staining of A431 lysate (35 ug protein in RIPA buffer). Primary incubation was 1 hour. Detected by chemiluminescence.

Requested From:	Japan
Laboratory Reagent For In Vitro Research Use Only	
Not for resale without prior written consent from LifeSpan BioSciences, Inc.	
Created on 9/23/2014	
© 2014 LifeSpan BioSciences	