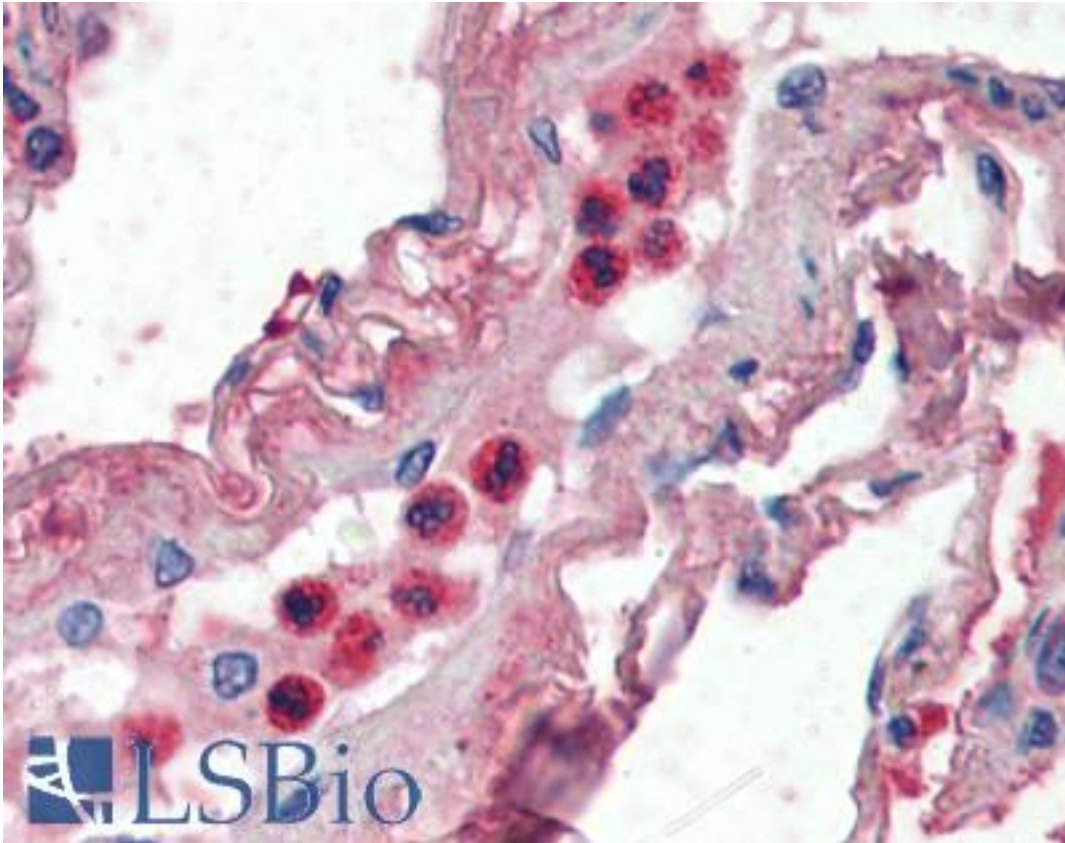


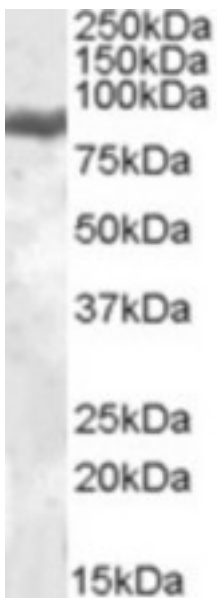
LF / LTF / Lactoferrin Goat anti-Human Polyclonal (Internal) Antibody - LS-B3025 - LSBio	
<b>CatalogID:</b>	LS-B3025
<b>Validation:</b>	This antibody replaces catalog number LS-C87373. It has been validated for use in the following assays: IHC-P.
<b>Target:</b>	lactotransferrin (LTF)
<b>Synonyms:</b>	LTF Antibody, GIG12 Antibody, Growth-inhibiting protein 12 Antibody, HLF2 Antibody, Lactotransferrin Antibody, Lactoferrin Antibody, LF Antibody, Neutrophil lactoferrin Antibody, Talalactoferrin Antibody
<b>Host</b>	LTF antibody was produced in Goat
<b>Clonality:</b>	Polyclonal
<b>Immunogen Species:</b>	LF / LTF / Lactoferrin antibody was raised against Human
<b>Antigen Type:</b>	Synthetic peptide
<b>Immunogen:</b>	LF / LTF / Lactoferrin antibody was raised against synthetic peptide C-ENYKSQQSSDPDP from an internal region of human LTF / Lactoferrin (NP_002334.2). Percent identity by BLAST analysis: Human, Gorilla (100%); Gibbon (92%); Monkey (85%).
<b>Specificity:</b>	Human LTF / Lactoferrin.
<b>Epitope:</b>	Internal
<b>Reactivity:</b>	Human, Gorilla
<b>Predicted Reactivity:</b>	Gibbon
<b>Purification:</b>	Immunoaffinity purified
<b>Presentation:</b>	Tris-buffered saline, pH 7.3, 0.5% BSA, 0.02% sodium azide
<b>Recommended Storage:</b>	Store at -20°C. Minimize freezing and thawing.
<b>Usage Summary:</b>	Immunohistochemistry: LS-B3025 was validated for use in immunohistochemistry on a panel of 21 formalin-fixed, paraffin-embedded (FFPE) human tissues after heat induced antigen retrieval in pH 6.0 citrate buffer. After incubation with the primary antibody, slides were incubated with biotinylated secondary antibody, followed by alkaline phosphatase-streptavidin and chromogen. The stained slides were evaluated by a pathologist to confirm staining specificity. The optimal working concentration for LS-B3025 was determined to be 2 ug/ml. Peptide ELISA: antibody detection limit dilution 1:32000. Western Blot: Approx. 85kD band observed in Human Peripheral Mononucleocyte lysates (calculated MW of 78.2kD according to NP_002334.2). Recommended concentration: 0.05-0.2 ug/ml.
<b>Uses:</b>	IHC - Paraffin (2 µg/ml), Western blot (0.05 - 0.2 µg/ml), ELISA (1:32000) (Optimal dilution to be determined by the researcher)
<b>Size:</b>	50 µg
<b>Concentration:</b>	0.5 mg/ml

**Immunohistochemistry Image:**



Anti-LTF / Lactoferrin antibody IHC of human neutrophils. Immunohistochemistry of formalin-fixed, paraffin-embedded tissue after heat-induced antigen retrieval. Antibody LS-B3025 concentration 2 ug/ml.

**Western Blot Image:**



Antibody (0.05 ug/ml) staining of Peripheral Blood Mononucleocyte lysate (35 ug protein in RIPA buffer). Primary incubation was 1 hour. Detected by chemiluminescence.

<b>Requested From:</b>	Japan
Laboratory Reagent For In Vitro Research Use Only	
Not for resale without prior written consent from LifeSpan BioSciences, Inc.	
Created on 9/23/2014	
© 2014 LifeSpan BioSciences	