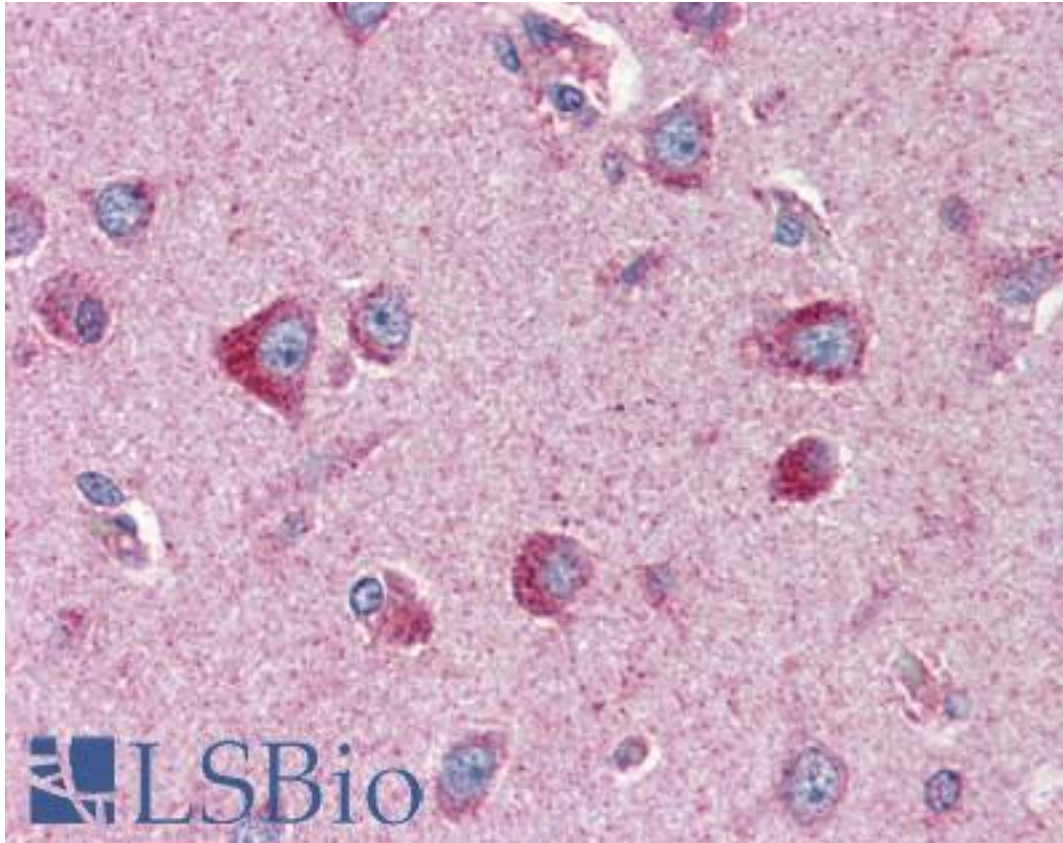


SLC22A17 Goat anti-Human Polyclonal (Internal) Antibody - LS-B3023 - LSBio	
CatalogID:	LS-B3023
Validation:	This antibody replaces catalog number LS-C87341. It has been validated for use in the following assays: IHC-P.
Target:	solute carrier family 22, member 17 (SLC22A17)
Synonyms:	SLC22A17 Antibody, 24p3 receptor Antibody, 24p3R Antibody, BOIT Antibody, BOCT Antibody, HBOIT Antibody, NGALR Antibody, NGAL receptor Antibody, NGALR2 Antibody, Lipocalin-2 receptor Antibody, MBOCT Antibody, NGALR3 Antibody
Family / Subfamily:	Transporter / Organic cation transporter
Host	SLC22A17 antibody was produced in Goat
Clonality:	Polyclonal
Immunogen Species:	SLC22A17 antibody was raised against Human
Antigen Type:	Synthetic peptide
Immunogen:	SLC22A17 antibody was raised against synthetic peptide C-PETKRKLLPEVLRD from an internal region of human SLC22A17 (NP_065105.2; NP_057693.3). Percent identity by BLAST analysis: Human, Gorilla, Gibbon, Monkey, Marmoset, Mouse, Rat, Hamster, Panda, Dog, Bat, Bovine, Horse, Pig (100%); Elephant, Rabbit (93%).
Specificity:	Human SLC22A17. This antibody is expected to recognize both reported isoforms NP_065105.2 and NP_057693.3).
Epitope:	Internal
Reactivity:	Human, Gorilla, Gibbon, Monkey, Mouse, Rat, Bat, Bovine, Dog, Hamster, Horse, Pig
Predicted Reactivity:	Rabbit
Purification:	Immunoaffinity purified
Presentation:	Tris-buffered saline, pH 7.3, 0.5% BSA, 0.02% sodium azide
Recommended Storage:	Store at -20°C. Minimize freezing and thawing.
Usage Summary:	Immunohistochemistry: LS-B3023 was validated for use in immunohistochemistry on a panel of 21 formalin-fixed, paraffin-embedded (FFPE) human tissues after heat induced antigen retrieval in pH 6.0 citrate buffer. After incubation with the primary antibody, slides were incubated with biotinylated secondary antibody, followed by alkaline phosphatase-streptavidin and chromogen. The stained slides were evaluated by a pathologist to confirm staining specificity. The optimal working concentration for LS-B3023 was determined to be 2 ug/ml. Peptide ELISA: antibody detection limit dilution 1:64000. Western Blot: Preliminary experiments gave an approx 150kD band in Human Cerebellum lysates after 0.1 ug/ml antibody staining. Please note that currently we cannot find an explanation in the literature for the band we observe given the calculated size of 57.7kD according to NP_065105.2. The 150kD band was successfully blocked by incubation with the immunizing peptide.
Uses:	IHC - Paraffin (2 µg/ml), ELISA (1:64000) (Optimal dilution to be determined by the researcher)

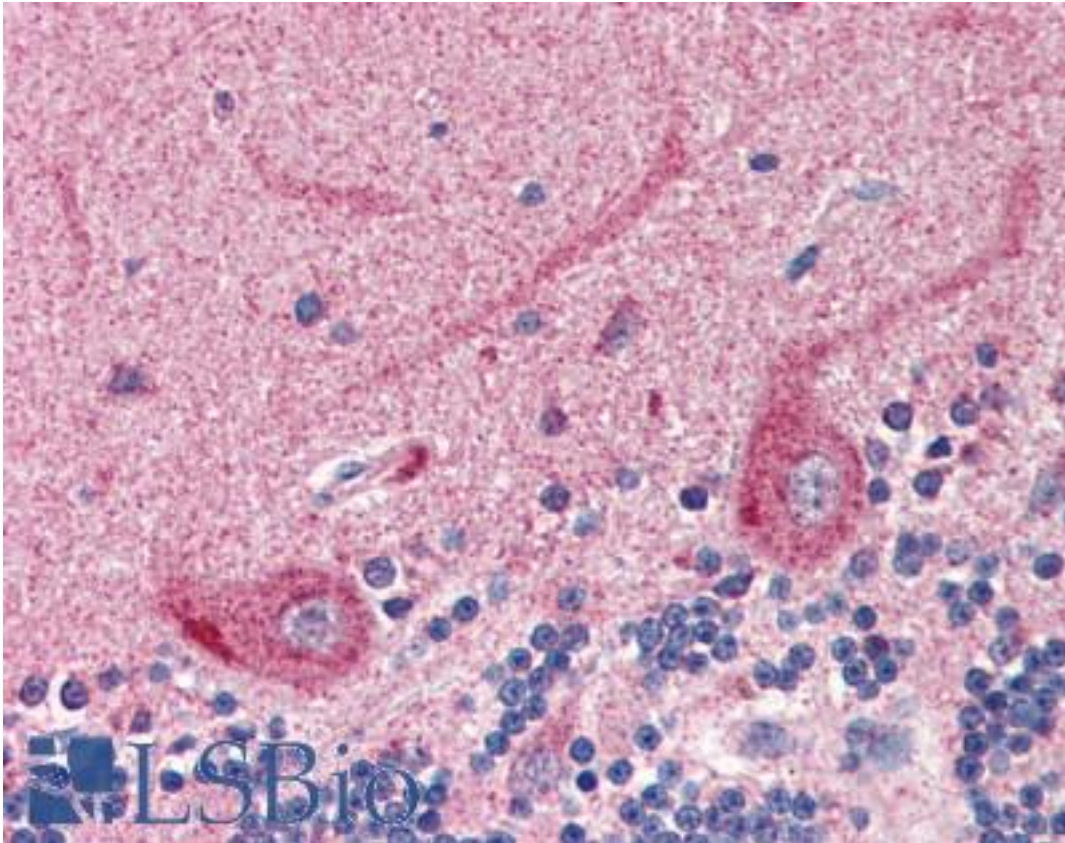
Size:	50 µg
Concentration:	0.5 mg/ml

Immunohistochemistry Image:



Anti-SLC22A17 antibody IHC of human brain, cortex. Immunohistochemistry of formalin-fixed, paraffin-embedded tissue after heat-induced antigen retrieval. Antibody LS-B3023 concentration 2 ug/ml.

Immunohistochemistry Image:



Anti-SLC22A17 antibody IHC of human brain, cerebellum. Immunohistochemistry of formalin-fixed, paraffin-embedded tissue after heat-induced antigen retrieval. Antibody LS-B3023 concentration 2 ug/ml.

Requested From:

Japan

Laboratory Reagent For In Vitro Research Use Only

Not for resale without prior written consent from LifeSpan BioSciences, Inc.

Created on 9/23/2014

© 2014 LifeSpan BioSciences