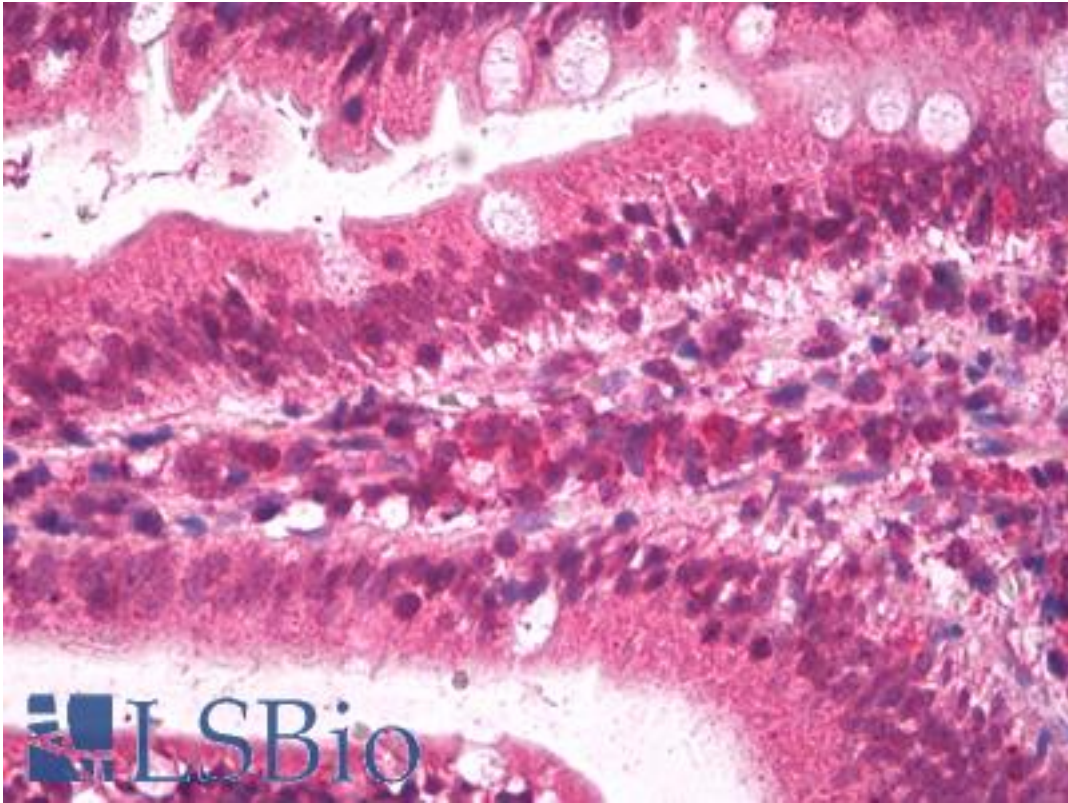


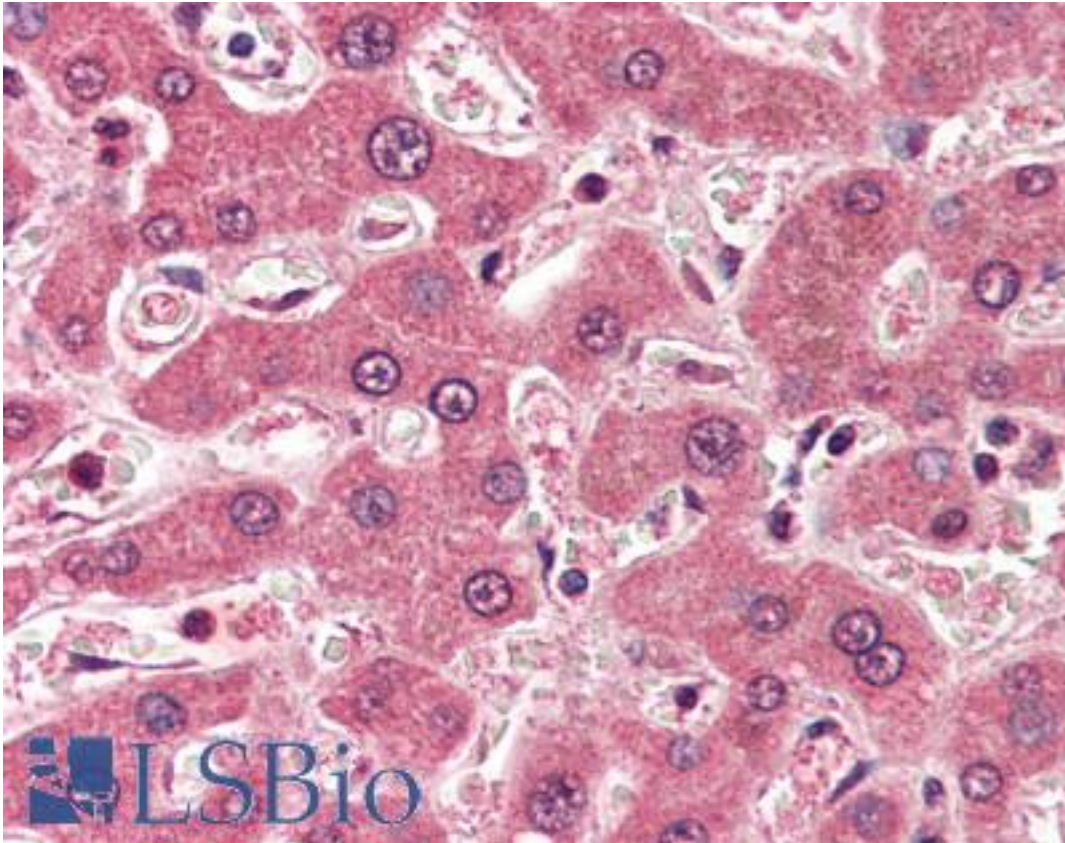
Apolipoprotein B / APOB Goat anti-Human Polyclonal (Internal) Antibody - LS-B3022 - LSBio	
<b>CatalogID:</b>	LS-B3022
<b>Validation:</b>	This antibody replaces catalog number LS-C87337. It has been validated for use in the following assays: IHC-P.
<b>Target:</b>	apolipoprotein B (APOB)
<b>Synonyms:</b>	APOB Antibody, ApoB-100 Antibody, Apolipoprotein B-48 Antibody, ApoB-48 Antibody, Apolipoprotein B Antibody, FLDB Antibody, LDLCQ4 Antibody, Mutant Apo B 100 Antibody, Apo B-100 Antibody, Apolipoprotein B-100 Antibody, Apolipoprotein B48 Antibody
<b>Host</b>	APOB antibody was produced in Goat
<b>Clonality:</b>	Polyclonal
<b>Immunogen Species:</b>	Apolipoprotein B / APOB antibody was raised against Human
<b>Antigen Type:</b>	Synthetic peptide
<b>Immunogen:</b>	Apolipoprotein B / APOB antibody was raised against synthetic peptide C-TDLHLRYQKDKK from an internal region of human APOB (NP_000375.2). Percent identity by BLAST analysis: Human, Gorilla, Gibbon, Monkey (100%).
<b>Specificity:</b>	Human APOB.
<b>Epitope:</b>	Internal
<b>Reactivity:</b>	Human, Gorilla, Gibbon, Monkey
<b>Purification:</b>	Immunoaffinity purified
<b>Presentation:</b>	Tris-buffered saline, pH 7.3, 0.5% BSA, 0.02% sodium azide
<b>Recommended Storage:</b>	Short term 4°C, long term aliquot and store at -20°C, avoid freeze thaw cycles.
<b>Usage Summary:</b>	Immunohistochemistry: LS-B3022 was validated for use in immunohistochemistry on a panel of 21 formalin-fixed, paraffin-embedded (FFPE) human tissues after heat induced antigen retrieval in pH 6.0 citrate buffer. After incubation with the primary antibody, slides were incubated with biotinylated secondary antibody, followed by alkaline phosphatase-streptavidin and chromogen. The stained slides were evaluated by a pathologist to confirm staining specificity. The optimal working concentration for LS-B3022 was determined to be 2 ug/ml. Peptide ELISA: antibody detection limit dilution 1:32000. Western Blot: Band corresponding to the expected size of ApoB100 is seen along with additional bands at lower molecular weights.
<b>Uses:</b>	IHC - Paraffin (2 µg/ml), Western blot (0.3 - 1 µg/ml), ELISA (1:32000) (Optimal dilution to be determined by the researcher)
<b>Size:</b>	50 µg
<b>Concentration:</b>	0.5 mg/ml

**Immunohistochemistry Image:**



Anti-Apolipoprotein B antibody IHC of human small intestine. Immunohistochemistry of formalin-fixed, paraffin-embedded tissue after heat-induced antigen retrieval. Antibody LS-B3022 concentration 2 ug/ml.

**Immunohistochemistry Image:**



Anti-Apolipoprotein B antibody IHC of human liver. Immunohistochemistry of formalin-fixed, paraffin-embedded tissue after heat-induced antigen retrieval. Antibody LS-B3022 concentration 2 ug/ml.

**Requested From:**

Japan

Laboratory Reagent For In Vitro Research Use Only

Not for resale without prior written consent from LifeSpan BioSciences, Inc.

Created on 9/23/2014

© 2014 LifeSpan BioSciences