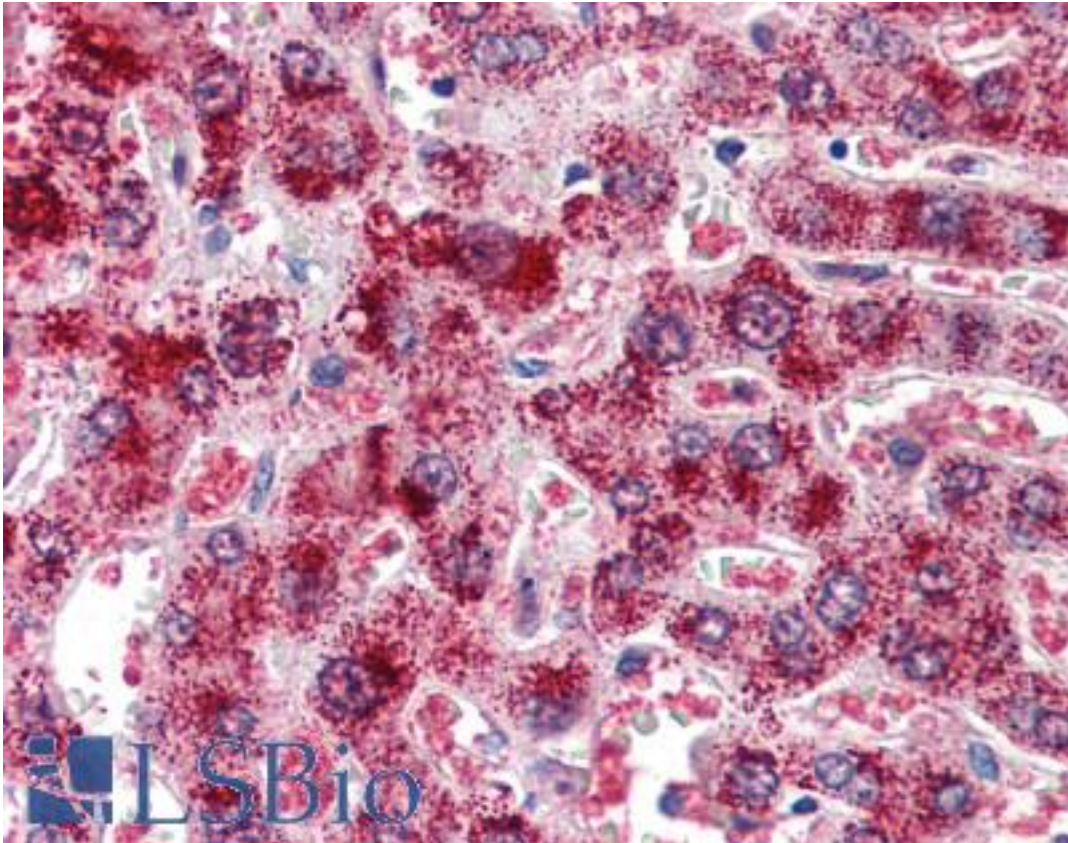


CAT / Catalase Goat anti-Human Polyclonal (Internal) Antibody - LS-B3014 - LSBio

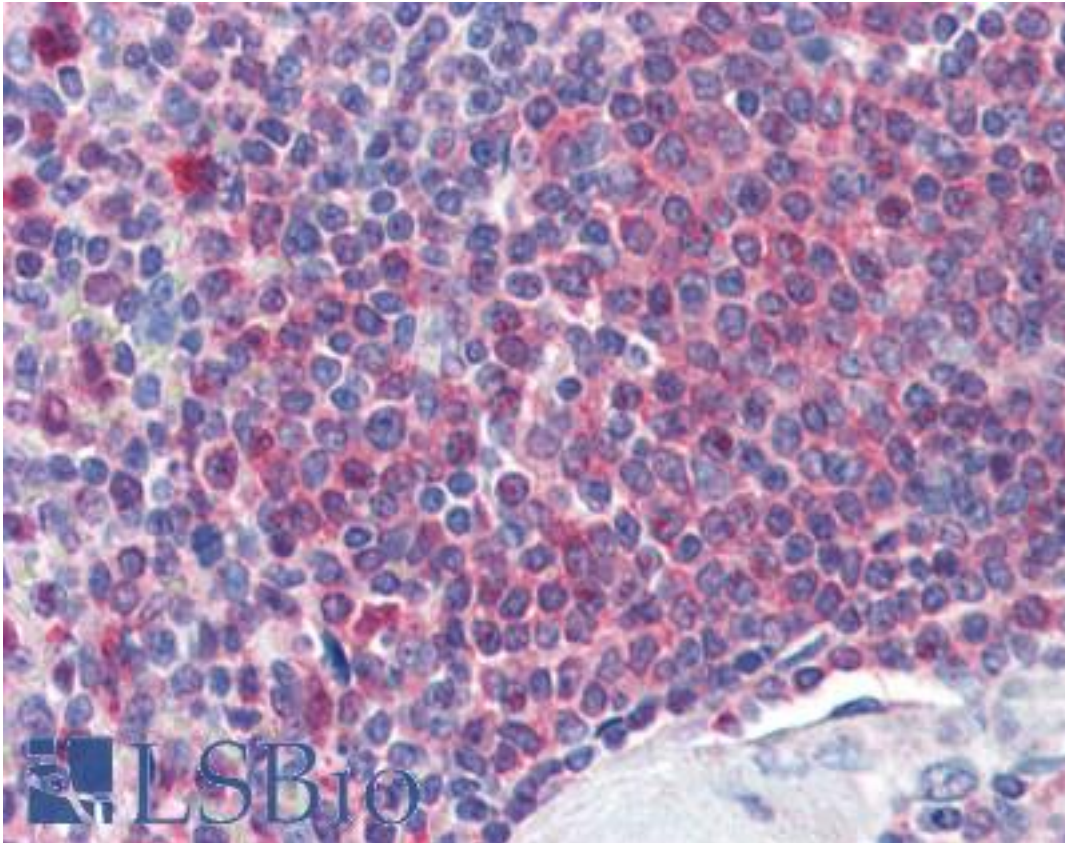
CatalogID:	LS-B3014
Validation:	This antibody replaces catalog number LS-C34672. It has been validated for use in the following assays: IHC-P.
Target:	catalase
Synonyms:	CAT Antibody, Catalase Antibody
Host	CAT antibody was produced in Goat
Clonality:	Polyclonal
Immunogen Species:	CAT / Catalase antibody was raised against Human
Antigen Type:	Synthetic peptide
Immunogen:	CAT / Catalase antibody was raised against synthetic peptide C-DKYNAEKPKNAIHT from an internal region of human CAT / Catalase (NP_001743.1). Percent identity by BLAST analysis: Human, Gorilla, Orangutan, Gibbon, Monkey, Marmoset, Mouse, Hamster, Panda, Bat, Dog, Horse (100%); Elephant, Pig, Guinea pig (93%); Sheep, Goat, Bovine (86%).
Specificity:	Human CAT / Catalase.
Epitope:	Internal
Reactivity:	Human, Gorilla, Orangutan, Gibbon, Monkey, Mouse, Bat, Dog, Hamster, Horse
Predicted Reactivity:	Guinea pig, Pig
Purification:	Immunoaffinity purified
Presentation:	Tris-buffered saline, pH 7.3, 0.5% BSA, 0.02% sodium azide
Recommended Storage:	Store at -20°C. Minimize freezing and thawing.
Usage Summary:	Immunohistochemistry: LS-B3014 was validated for use in immunohistochemistry on a panel of 21 formalin-fixed, paraffin-embedded (FFPE) human tissues after heat induced antigen retrieval in pH 6.0 citrate buffer. After incubation with the primary antibody, slides were incubated with biotinylated secondary antibody, followed by alkaline phosphatase-streptavidin and chromogen. The stained slides were evaluated by a pathologist to confirm staining specificity. The optimal working concentration for LS-B3014 was determined to be 2 ug/ml.
Uses:	IHC - Paraffin (2 µg/ml), Western blot (0.3 - 1 µg/ml), ELISA (1:32000) (Optimal dilution to be determined by the researcher)
Size:	50 µg
Concentration:	0.5 mg/ml

Immunohistochemistry Image:



Anti-Catalase antibody IHC of human liver. Immunohistochemistry of formalin-fixed, paraffin-embedded tissue after heat-induced antigen retrieval. Antibody LS-B3014 concentration 2 ug/ml.

Immunohistochemistry Image:



Anti-Catalase antibody IHC of human spleen. Immunohistochemistry of formalin-fixed, paraffin-embedded tissue after heat-induced antigen retrieval. Antibody LS-B3014 concentration 2 ug/ml.

Western Blot Image:



Western blot of human kidney lysate

Requested From:

Japan

Laboratory Reagent For In Vitro Research Use Only

Not for resale without prior written consent from LifeSpan BioSciences, Inc.

Created on 9/23/2014

© 2014 LifeSpan BioSciences