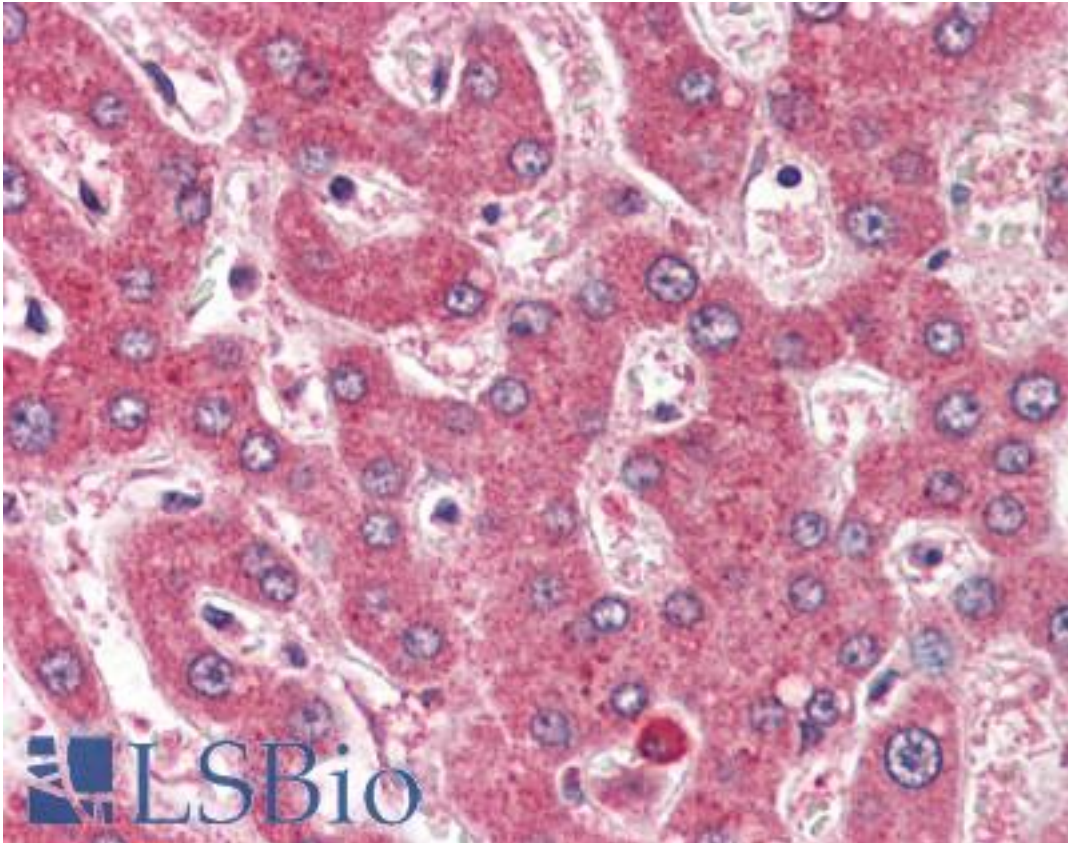


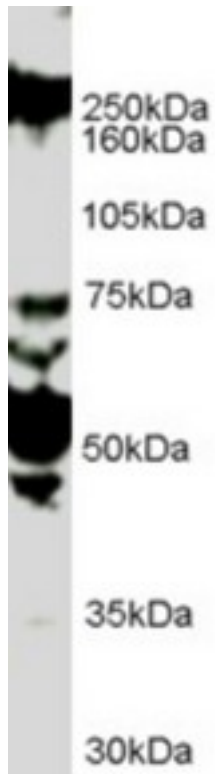
ROBO1 Goat anti-Human Polyclonal (Internal) Antibody - LS-B3011 - LSBio	
<b>CatalogID:</b>	LS-B3011
<b>Validation:</b>	This antibody replaces catalog number LS-C55415. It has been validated for use in the following assays: IHC-P.
<b>Target:</b>	roundabout, axon guidance receptor, homolog 1 (Drosophila) (ROBO1)
<b>Synonyms:</b>	ROBO1 Antibody, Deleted in U twenty twenty Antibody, H-Robo-1 Antibody, Roundabout 1 Antibody, SAX3 Antibody, DUTT1 Antibody, Roundabout homolog 1 Antibody
<b>Host</b>	ROBO1 antibody was produced in Goat
<b>Clonality:</b>	Polyclonal
<b>Immunogen Species:</b>	ROBO1 antibody was raised against Human
<b>Antigen Type:</b>	Synthetic peptide
<b>Immunogen:</b>	ROBO1 antibody was raised against synthetic peptide C-GDVDLSNKINEMK from an internal region of human ROBO1 (NP_002932.1; NP_598334.1; NP_001139316.1; NP_001139317.1). Percent identity by BLAST analysis: Human, Gorilla, Gibbon, Monkey, Marmoset, Mouse, Rat, Hamster, Elephant, Panda, Bovine, Dog, Bat, Horse, Pig, Opossum, Turkey, Chicken, Lizard, Xenopus, Stickleback, Pufferfish (100%); Platypus, Zebrafish (92%).
<b>Specificity:</b>	Human ROBO1. This antibody is expected to recognise all reported isoforms (NP_002932.1; NP_598334.1; NP_001139316.1; NP_001139317.1).
<b>Epitope:</b>	Internal
<b>Reactivity:</b>	Human, Gorilla, Gibbon, Monkey, Mouse, Rat, Bat, Bovine, Dog, Hamster, Horse, Pig, Chicken, Xenopus
<b>Predicted Reactivity:</b>	Zebrafish
<b>Purification:</b>	Immunoaffinity purified
<b>Presentation:</b>	Tris-buffered saline, pH 7.3, 0.5% BSA, 0.02% sodium azide
<b>Recommended Storage:</b>	Store at -20°C. Minimize freezing and thawing.
<b>Usage Summary:</b>	Immunohistochemistry: LS-B3011 was validated for use in immunohistochemistry on a panel of 21 formalin-fixed, paraffin-embedded (FFPE) human tissues after heat induced antigen retrieval in pH 6.0 citrate buffer. After incubation with the primary antibody, slides were incubated with biotinylated secondary antibody, followed by alkaline phosphatase-streptavidin and chromogen. The stained slides were evaluated by a pathologist to confirm staining specificity. The optimal working concentration for LS-B3011 was determined to be 2 ug/ml.
<b>Uses:</b>	IHC - Paraffin (2 µg/ml), Western blot (1 - 3 µg/ml), ELISA (1:8000) (Optimal dilution to be determined by the researcher)
<b>Size:</b>	50 µg
<b>Concentration:</b>	0.5 mg/ml

**Immunohistochemistry Image:**



Anti-ROBO1 antibody IHC of human liver. Immunohistochemistry of formalin-fixed, paraffin-embedded tissue after heat-induced antigen retrieval. Antibody LS-B3011 concentration 2 ug/ml.

**Western Blot Image:**



Antibody (1 ug/ml) staining of HUVEC lysate (35 ug protein in RIPA buffer). Primary incubation was 1 hour. Detected by chemiluminescence.

**Requested From:**

Japan

Laboratory Reagent For In Vitro Research Use Only

Not for resale without prior written consent from LifeSpan BioSciences, Inc.

Created on 9/23/2014

© 2014 LifeSpan BioSciences