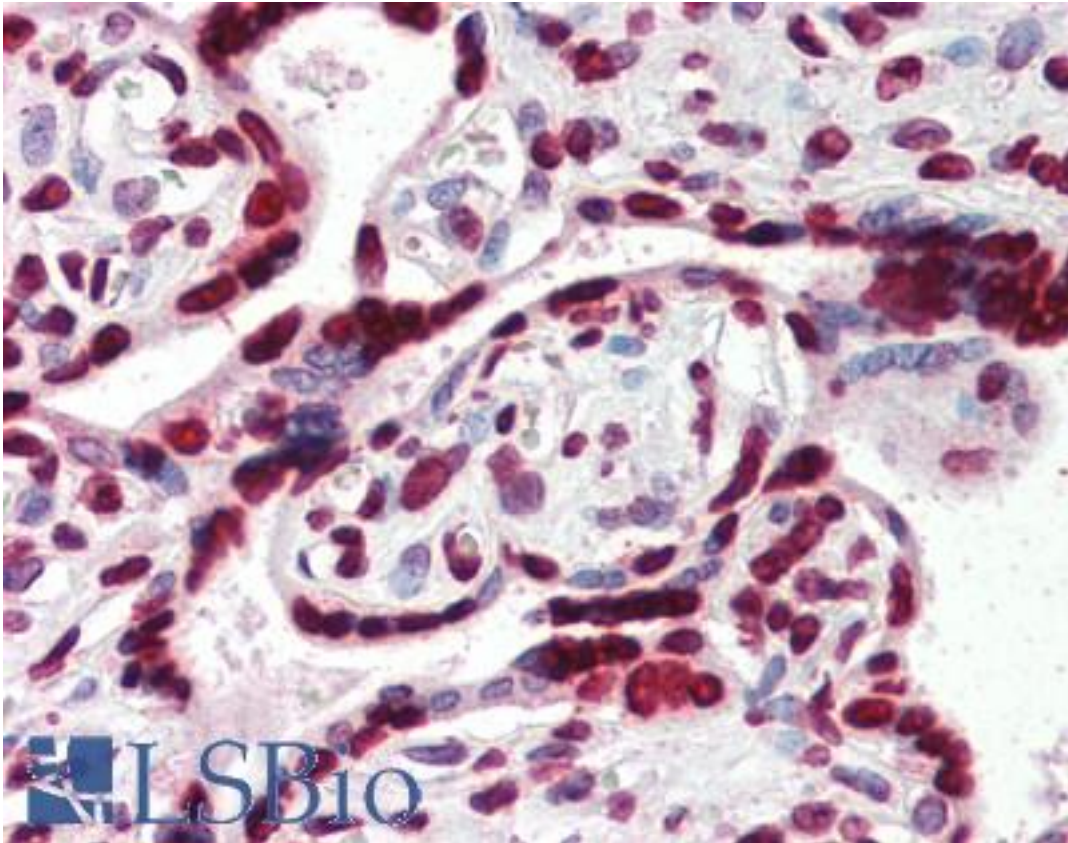


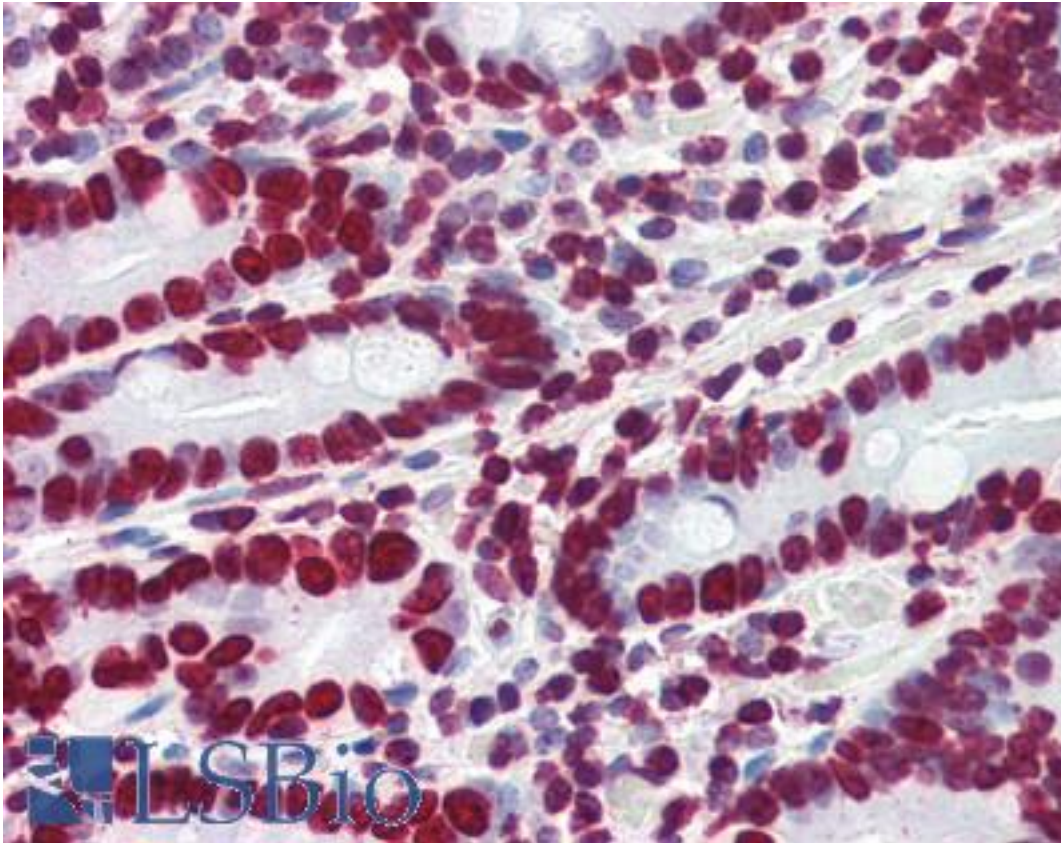
HMGIY / HMGA1 Goat anti-Human Polyclonal (Internal) Antibody - LS-B3008 - LSBio	
CatalogID:	LS-B3008
Validation:	This antibody replaces catalog number LS-C54972. It has been validated for use in the following assays: IHC-P.
Target:	high mobility group AT-hook 1 (HMGA1)
Synonyms:	HMGA1 Antibody, High mobility group protein A1 Antibody, High mobility group protein R Antibody, HMG-R Antibody, Hmg-i Antibody, HMGIY Antibody, High mobility group AT-hook 1 Antibody, HMG-I(Y) Antibody, HMGA1A Antibody
Host	HMGA1 antibody was produced in Goat
Clonality:	Polyclonal
Immunogen Species:	HMGIY / HMGA1 antibody was raised against Human
Antigen Type:	Synthetic peptide
Immunogen:	HMGIY / HMGA1 antibody was raised against synthetic peptide C-LASKQEKDGTEK from an internal region of human HMGA1 (NP_665906.1; NP_665908.1; NP_002122.1; NP_665909.1; NP_665912.1; NP_665910.1). Percent identity by BLAST analysis: Human, Gorilla, Monkey, Marmoset, Mouse, Rat, Hamster, Elephant, Panda, Bat, Dog, Horse, Rabbit, Pig (100%); Gibbon, Bovine, Opossum (92%).
Specificity:	Human HMGA1. This antibody is expected to recognise isoform a (also called HMG-I; NP_665906.1; NP_665908.1) and isoform b (also called HMG-Y; NP_002122.1; NP_665909.1; NP_665910.1; NP_665912.1).
Epitope:	Internal
Reactivity:	Human, Gorilla, Monkey, Mouse, Rat, Bat, Dog, Hamster, Horse, Pig, Rabbit
Predicted Reactivity:	Gibbon, Bovine
Purification:	Immunoaffinity purified
Presentation:	Tris-buffered saline, pH 7.3, 0.5% BSA, 0.02% sodium azide
Recommended Storage:	Store at -20°C. Minimize freezing and thawing.
Usage Summary:	Immunohistochemistry: LS-B3008 was validated for use in immunohistochemistry on a panel of 21 formalin-fixed, paraffin-embedded (FFPE) human tissues after heat induced antigen retrieval in pH 6.0 citrate buffer. After incubation with the primary antibody, slides were incubated with biotinylated secondary antibody, followed by alkaline phosphatase-streptavidin and chromogen. The stained slides were evaluated by a pathologist to confirm staining specificity. The optimal working concentration for LS-B3008 was determined to be 4 ug/ml.
Uses:	IHC - Paraffin (4 µg/ml), ELISA (1:32000) (Optimal dilution to be determined by the researcher)
Size:	50 µg
Concentration:	0.5 mg/ml

Immunohistochemistry Image:



Anti-HMGA1 antibody IHC of human placenta. Immunohistochemistry of formalin-fixed, paraffin-embedded tissue after heat-induced antigen retrieval. Antibody LS-B3008 concentration 4 ug/ml.

Immunohistochemistry Image:



Anti-HMGA1 antibody IHC of human small intestine. Immunohistochemistry of formalin-fixed, paraffin-embedded tissue after heat-induced antigen retrieval. Antibody LS-B3008 concentration 4 ug/ml.

Requested From:

Japan

Laboratory Reagent For In Vitro Research Use Only

Not for resale without prior written consent from LifeSpan BioSciences, Inc.

Created on 9/23/2014

© 2014 LifeSpan BioSciences