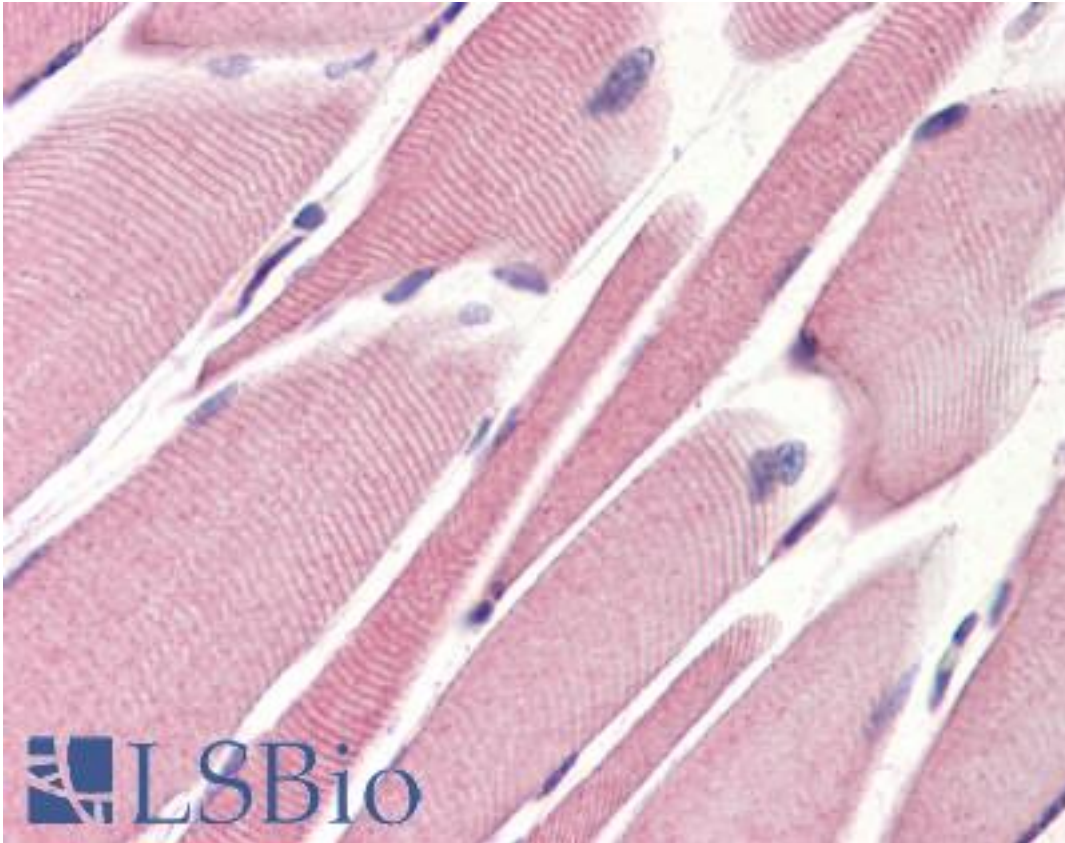


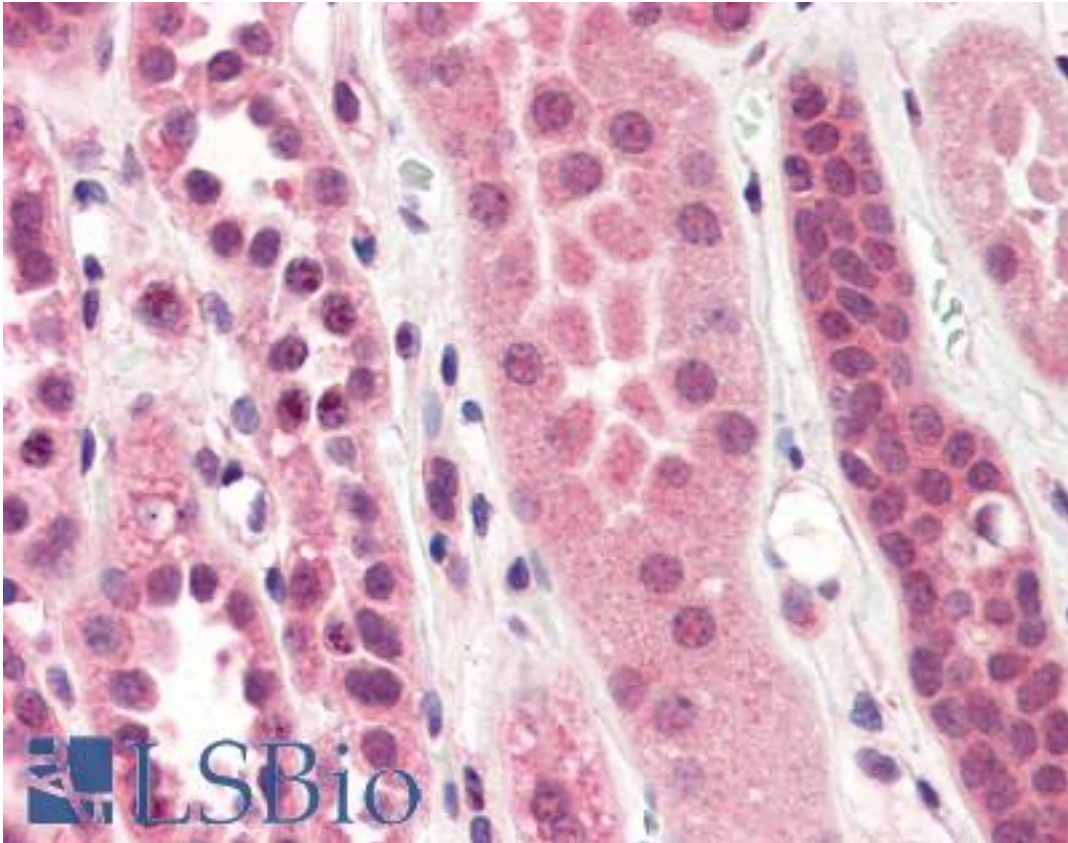
STEAP1 / STEAP Mouse anti-Human Monoclonal (aa1-70) (J2D2) Antibody - LS-B3003 - LSBio	
CatalogID:	LS-B3003
Validation:	This antibody replaces catalog number LS-C93798. It has been validated for use in the following assays: IHC-P.
Target:	six transmembrane epithelial antigen of the prostate 1 (STEAP1)
Synonyms:	STEAP1 Antibody, Metalloreductase STEAP1 Antibody, PRSS24 Antibody, STEAP Antibody
Host	STEAP1 antibody was produced in Mouse
Clonality:	Monoclonal
Isotype:	IgG2b,k
Clone Name:	J2D2
Immunogen Species:	STEAP1 / STEAP antibody was raised against Human
Antigen Type:	Recombinant protein
Immunogen:	STEAP1 / STEAP antibody was raised against recombinant human STEAP1 (1-70aa) purified from E. coli. NCBI Accession No: NP_036581.
Epitope:	aa1-70
Reactivity:	Human
Purification:	Protein G purified
Presentation:	PBS, pH 7.4, 0.1% sodium azide. Sourced in Ascites.
Recommended Storage:	Long term: -20°C; Short term: +4°C; Avoid freeze-thaw cycles.
Usage Summary:	Immunohistochemistry: LS-B3003 was validated for use in immunohistochemistry on a panel of 21 formalin-fixed, paraffin-embedded (FFPE) human tissues after heat induced antigen retrieval in pH 6.0 citrate buffer. After incubation with the primary antibody, slides were incubated with biotinylated secondary antibody, followed by alkaline phosphatase-streptavidin and chromogen. The stained slides were evaluated by a pathologist to confirm staining specificity. The optimal working concentration for LS-B3003 was determined to be 10 ug/ml.
Uses:	IHC - Paraffin (10 µg/ml), ICC, Immunofluorescence, Western blot (1:500 - 1:1000), ELISA (Optimal dilution to be determined by the researcher)
Size:	50 µg
Concentration:	1 mg/ml

Immunohistochemistry Image:



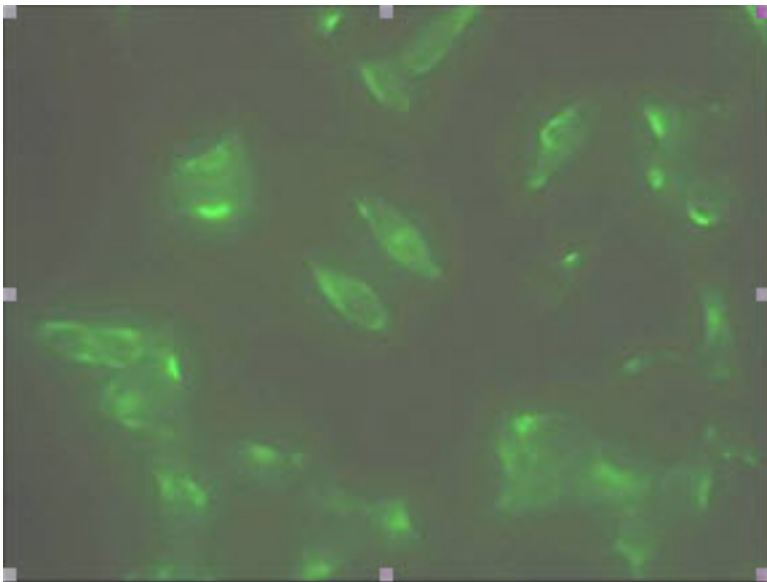
Anti-STEAP1 antibody IHC of human skeletal muscle. Immunohistochemistry of formalin-fixed, paraffin-embedded tissue after heat-induced antigen retrieval. Antibody LS-B3003 concentration 10 ug/ml.

Immunohistochemistry Image:



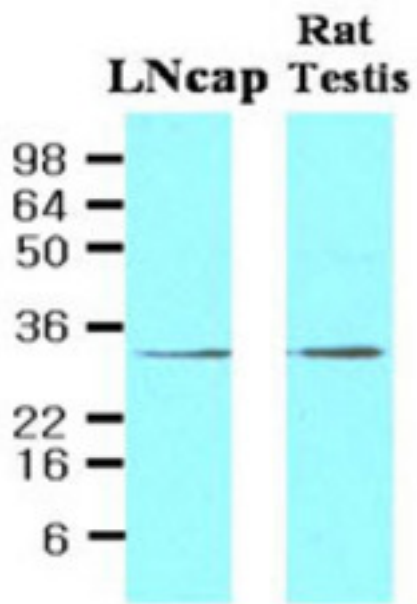
Anti-STEAP1 antibody IHC of human kidney. Immunohistochemistry of formalin-fixed, paraffin-embedded tissue after heat-induced antigen retrieval. Antibody LS-B3003 concentration 10 ug/ml.

Immunofluorescence Image:



Immunofluorescence staining of human LNCap cell colony with monoclonal anti-human STEAP1 antibody

Western Blot Image:



Requested From:

Japan

Laboratory Reagent For In Vitro Research Use Only

Not for resale without prior written consent from LifeSpan BioSciences, Inc.

Created on 9/23/2014

© 2014 LifeSpan BioSciences