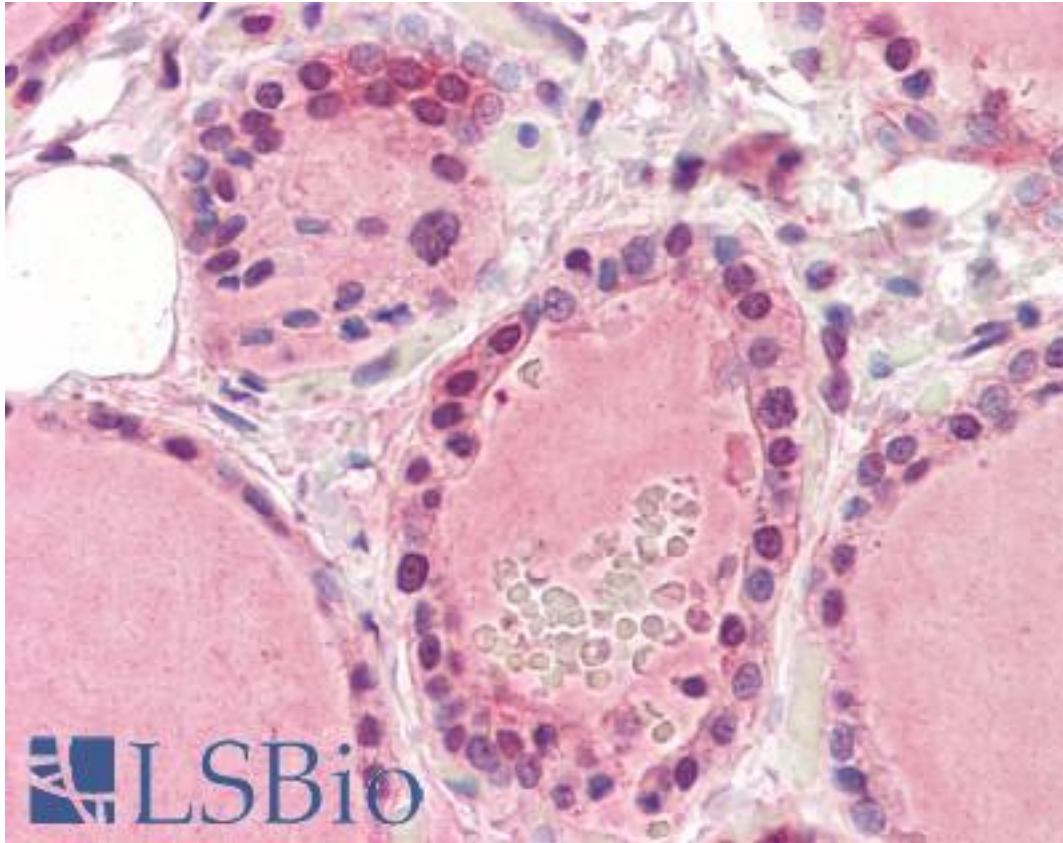


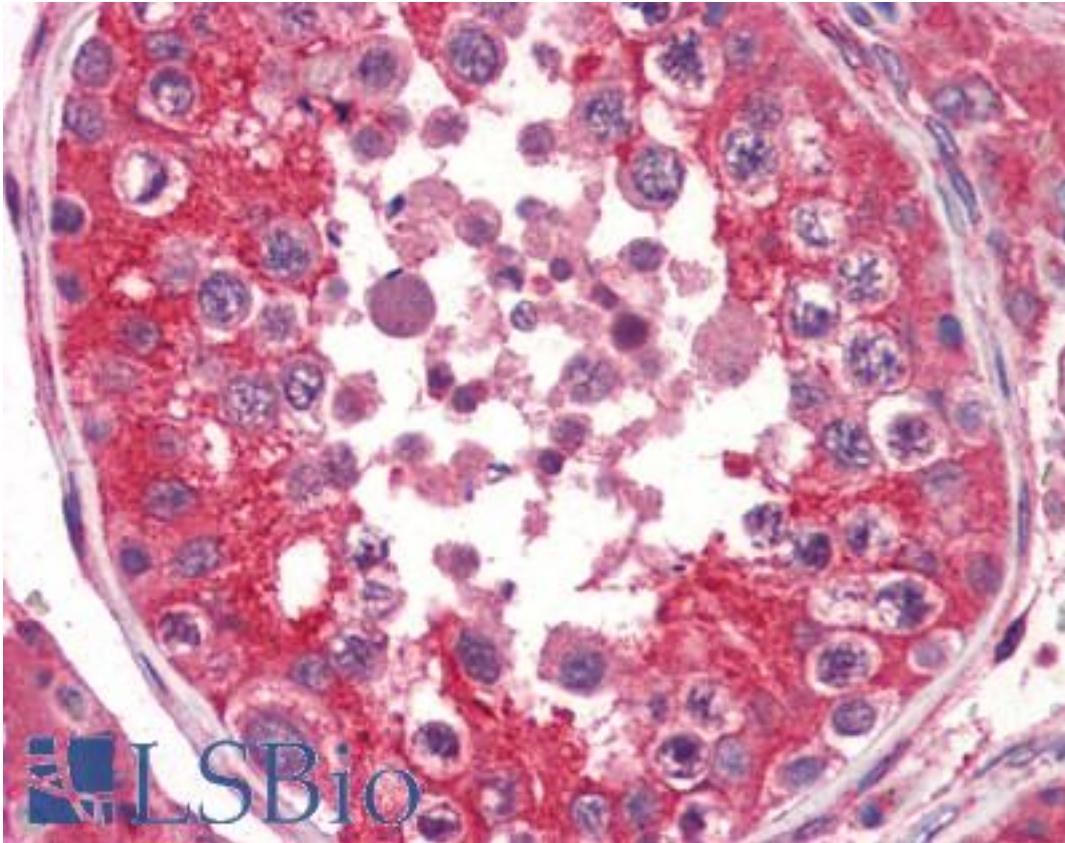
EPHA2 / EPH Receptor A2 Mouse anti-Human Monoclonal (aa559-976) (3D7) Antibody - LS-B3002 - LSBio	
CatalogID:	LS-B3002
Validation:	This antibody replaces catalog number LS-C93701. It has been validated for use in the following assays: IHC-P.
Target:	EPH receptor A2 (EPHA2)
Synonyms:	EPHA2 Antibody, CTPA Antibody, EPH receptor A2 Antibody, Ephrin type-A receptor 2 Antibody, Epithelial cell kinase Antibody, ECK Antibody, Sek-2 Antibody, ARCC2 Antibody, Soluble EPHA2 variant 1 Antibody, CTPP1 Antibody
Family / Subfamily:	Protein Kinase / Ephrin Receptor
Host	EPHA2 antibody was produced in Mouse
Clonality:	Monoclonal
Isotype:	IgG2b,k
Clone Name:	3D7
Immunogen Species:	EPHA2 / EPH Receptor A2 antibody was raised against Human
Antigen Type:	Recombinant protein
Immunogen:	EPHA2 / EPH Receptor A2 antibody was raised against recombinant human EphA2 (559-976aa) purified from E. coli. NCBI Accession No.: NP_004422.
Epitope:	aa559-976
Reactivity:	Human, Mouse
Purification:	Protein G purified
Presentation:	PBS, pH 7.4, 0.1% sodium azide. Sourced in Ascites.
Recommended Storage:	Long term: -20°C; Short term: +4°C; Avoid freeze-thaw cycles.
Usage Summary:	Immunohistochemistry: LS-B3002 was validated for use in immunohistochemistry on a panel of 21 formalin-fixed, paraffin-embedded (FFPE) human tissues after heat induced antigen retrieval in pH 6.0 citrate buffer. After incubation with the primary antibody, slides were incubated with biotinylated secondary antibody, followed by alkaline phosphatase-streptavidin and chromogen. The stained slides were evaluated by a pathologist to confirm staining specificity. The optimal working concentration for LS-B3002 was determined to be 5 ug/ml.
Uses:	IHC - Paraffin (5 µg/ml), Western blot (1:500 - 1:2000), ELISA (Optimal dilution to be determined by the researcher)
Size:	50 µg
Concentration:	1 mg/ml

Immunohistochemistry Image:



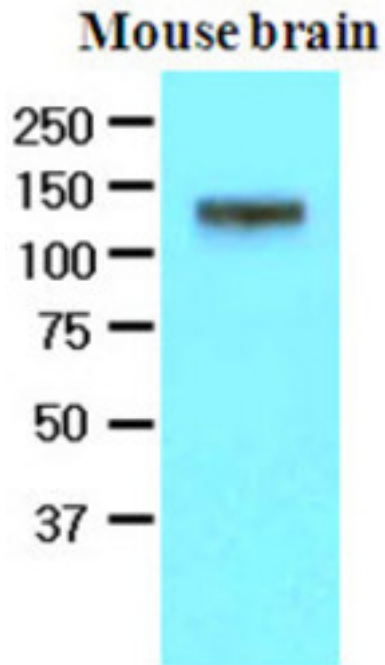
Anti-EPHA2 antibody IHC of human thyroid. Immunohistochemistry of formalin-fixed, paraffin-embedded tissue after heat-induced antigen retrieval. Antibody LS-B3002 concentration 5 ug/ml.

Immunohistochemistry Image:



Anti-EPHA2 antibody IHC of human testis. Immunohistochemistry of formalin-fixed, paraffin-embedded tissue after heat-induced antigen retrieval. Antibody LS-B3002 concentration 5 ug/ml.

Western Blot Image:



The extracts of mouse brain (50 ug) were resolved by SDS-PAGE, transferred to NC membrane and probed with anti-human EphA2 (1:500). Proteins were visualized using a goat anti-mouse secondary antibody conjugated to HRP and an ECL detection system.

Requested From:

Japan

Laboratory Reagent For In Vitro Research Use Only

Not for resale without prior written consent from LifeSpan BioSciences, Inc.

Created on 9/23/2014

© 2014 LifeSpan BioSciences