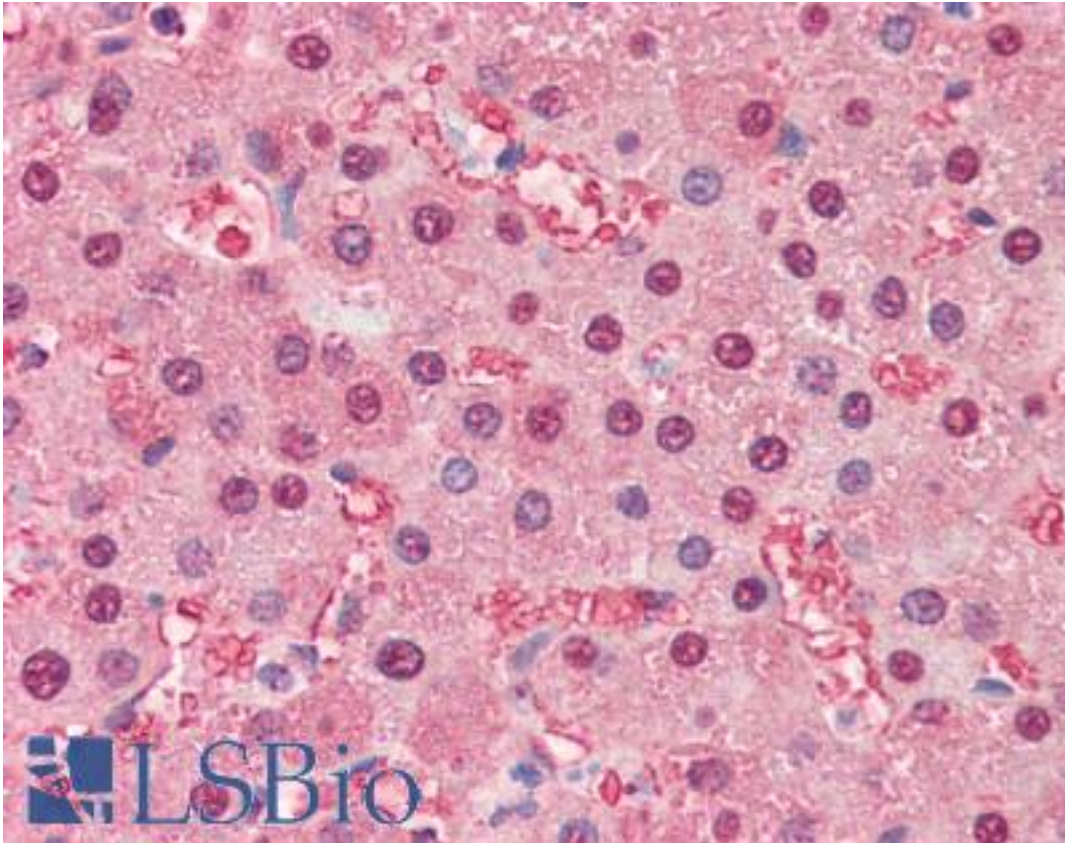


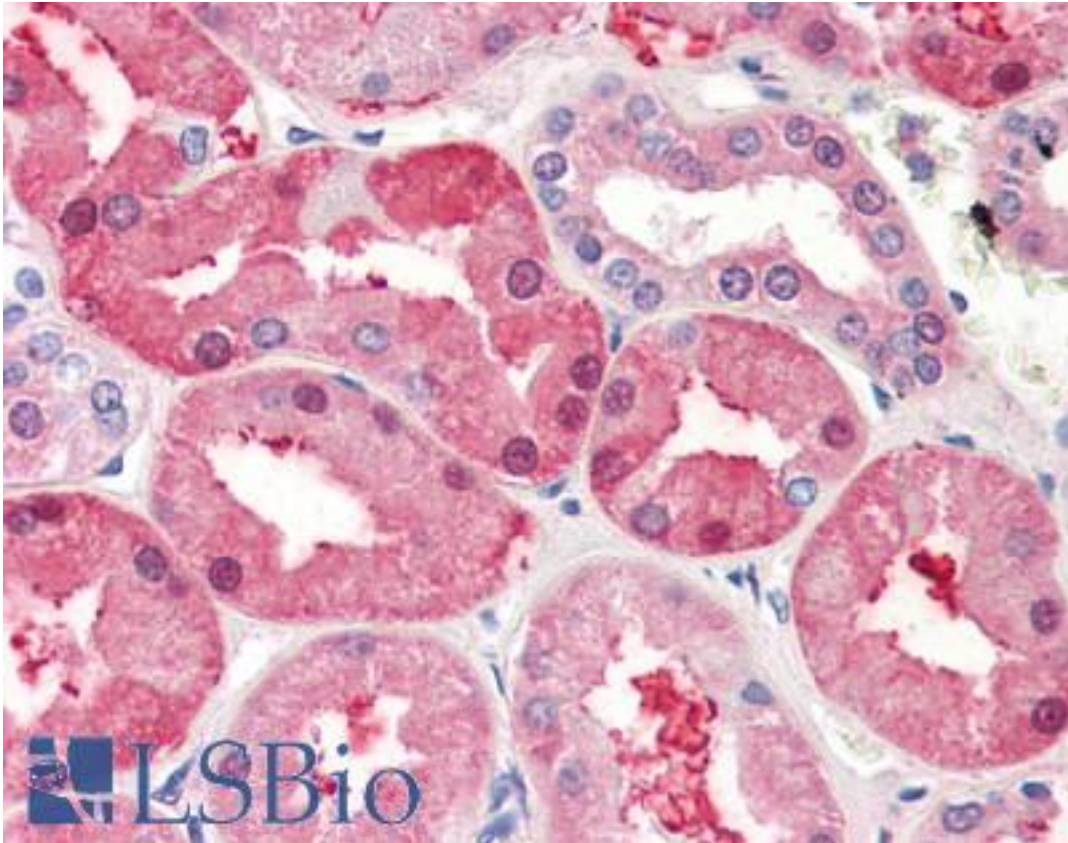
FABP1 / L-FABP Mouse anti-Human Monoclonal (aa1-127) (2G4) Antibody - LS-B3001 - LSBio	
CatalogID:	LS-B3001
Validation:	This antibody replaces catalog number LS-C93732. It has been validated for use in the following assays: IHC-P.
Target:	fatty acid binding protein 1, liver (FABP1)
Synonyms:	FABP1 Antibody, FABPL Antibody, L-FABP Antibody, Fatty acid-binding protein 1 Antibody
Host	FABP1 antibody was produced in Mouse
Clonality:	Monoclonal
Isotype:	IgG1,k
Clone Name:	2G4
Immunogen Species:	FABP1 / L-FABP antibody was raised against Human
Antigen Type:	Recombinant protein
Immunogen:	FABP1 / L-FABP antibody was raised against recombinant human FABP1 (1-127aa) purified from E. coli. NCBI Accession No.: NP_001434.
Epitope:	aa1-127
Reactivity:	Human
Purification:	Protein G purified
Presentation:	PBS, pH 7.4, 0.1% sodium azide
Recommended Storage:	Long term: -20°C; Short term: +4°C; Avoid freeze-thaw cycles.
Usage Summary:	Immunohistochemistry: LS-B3001 was validated for use in immunohistochemistry on a panel of 21 formalin-fixed, paraffin-embedded (FFPE) human tissues after heat induced antigen retrieval in pH 6.0 citrate buffer. After incubation with the primary antibody, slides were incubated with biotinylated secondary antibody, followed by alkaline phosphatase-streptavidin and chromogen. The stained slides were evaluated by a pathologist to confirm staining specificity. The optimal working concentration for LS-B3001 was determined to be 5 ug/ml.
Uses:	IHC - Paraffin (5 µg/ml), Western blot (1:1000 - 1:2000), ELISA (Optimal dilution to be determined by the researcher)
Size:	50 µg
Concentration:	1 mg/ml

Immunohistochemistry Image:



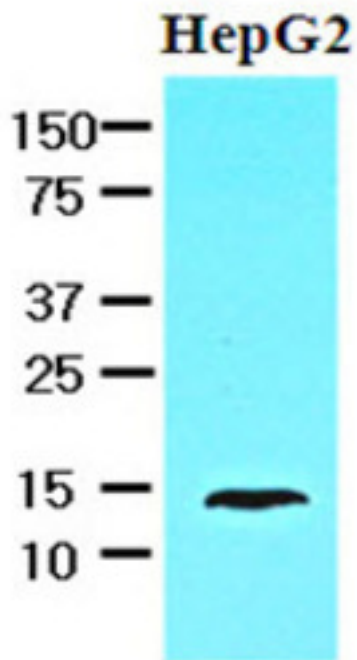
Anti-FABP1 antibody IHC of human liver. Immunohistochemistry of formalin-fixed, paraffin-embedded tissue after heat-induced antigen retrieval. Antibody LS-B3001 concentration 5 ug/ml.

Immunohistochemistry Image:



Anti-FABP1 antibody IHC of human kidney. Immunohistochemistry of formalin-fixed, paraffin-embedded tissue after heat-induced antigen retrieval. Antibody LS-B3001 concentration 5 ug/ml.

Western Blot Image:



Cell lysates of HepG2 (30 ug) were resolved by SDS-PAGE, transferred to NC membrane and probed with anti-human FABP1 (1:1000). Proteins were visualized using a goat anti-mouse secondary antibody conjugated to HRP and an ECL detection system.

Requested From:

Japan

Laboratory Reagent For In Vitro Research Use Only

Not for resale without prior written consent from LifeSpan BioSciences, Inc.

Created on 9/23/2014

© 2014 LifeSpan BioSciences