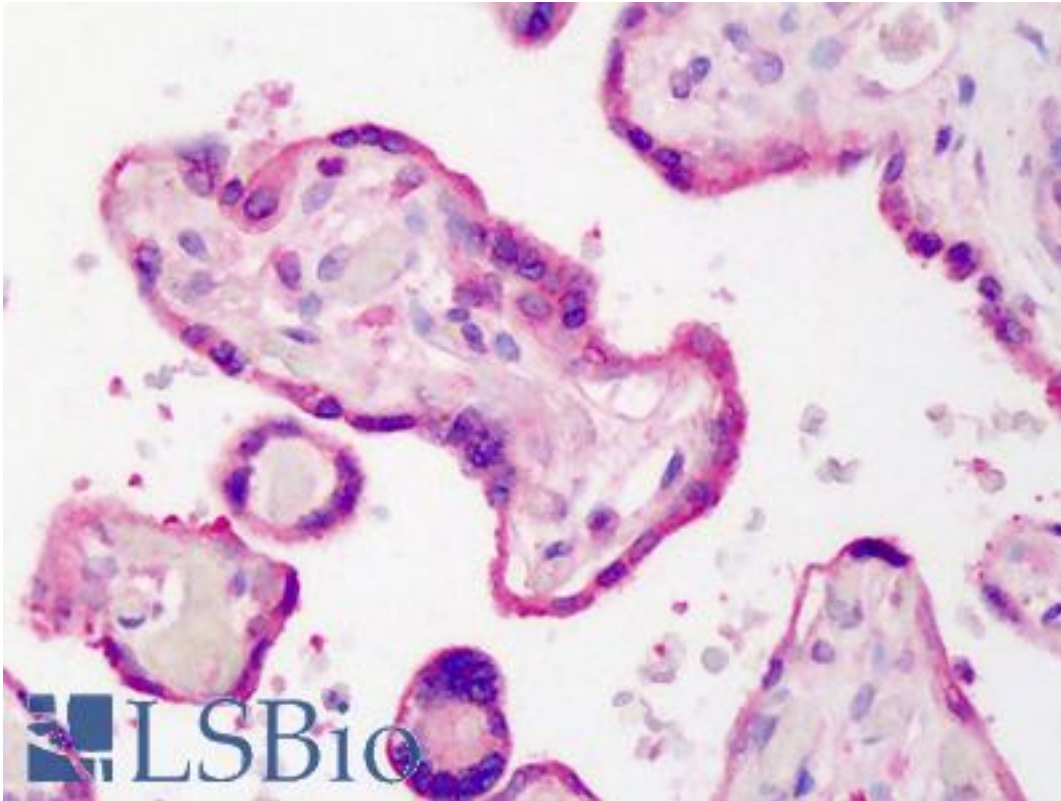


PSMD10 / Gankyrin Rabbit anti-Human Polyclonal (aa100-200) Antibody - LS-B300 - LSBio	
CatalogID:	LS-B300
Validation:	This antibody replaces catalog number LS-C2786. It has been validated for use in the following assays: IHC.
Target:	proteasome (prosome, macropain) 26S subunit, non-ATPase, 10 (PSMD10)
Synonyms:	PSMD10 Antibody, 26s proteasome subunit 10 Antibody, Ankyrin repeat protein Antibody, DJ889N15.2 Antibody, Gankyrin Antibody, p28 Antibody, p28(GANK) Antibody
Family / Subfamily:	Protease Non Catalytic / not assigned-Protease Non Catalytic
Host	PSMD10 antibody was produced in Rabbit
Clonality:	Polyclonal
Immunogen Species:	PSMD10 / Gankyrin antibody was raised against Human
Antigen Type:	Synthetic peptide
Immunogen:	PSMD10 / Gankyrin antibody was raised against a synthetic peptide made to an internal portion of the human gankyrin protein sequence (between residues 100-200). UniProt O75832. Percent identity by BLAST analysis: Mouse (100%).
Specificity:	Gankyrin.
Epitope:	aa100-200
Reactivity:	Human, Mouse
Purification:	Immunoaffinity purified
Presentation:	Buffer, 0.05% sodium azide.
Recommended Storage:	Long term: -20°C; Short term: +4°C. Avoid repeat freeze-thaw cycles.
Usage Summary:	Immunohistochemistry: LS-B300 was validated for use in immunohistochemistry on a panel of 21 formalin-fixed, paraffin-embedded (FFPE) human tissues after heat induced antigen retrieval in pH 6.0 citrate buffer. After incubation with the primary antibody, slides were incubated with biotinylated secondary antibody, followed by alkaline phosphatase-streptavidin and chromogen. The stained slides were evaluated by a pathologist to confirm staining specificity. The optimal working concentration for LS-B300 was determined to be 5 ug/ml.
Uses:	IHC - Paraffin (5 µg/ml), Western blot (2 µg/ml) (Optimal dilution to be determined by the researcher)
Size:	50 µl
Concentration:	0.97 mg/ml

Immunohistochemistry Image:



Anti-PSMD10 antibody IHC of human placenta. Immunohistochemistry of formalin-fixed, paraffin-embedded tissue after heat-induced antigen retrieval. Antibody LS-B300 concentration 5 ug/ml.

Requested From:

Japan

Laboratory Reagent For In Vitro Research Use Only

Not for resale without prior written consent from LifeSpan BioSciences, Inc.

Created on 9/23/2014

© 2014 LifeSpan BioSciences