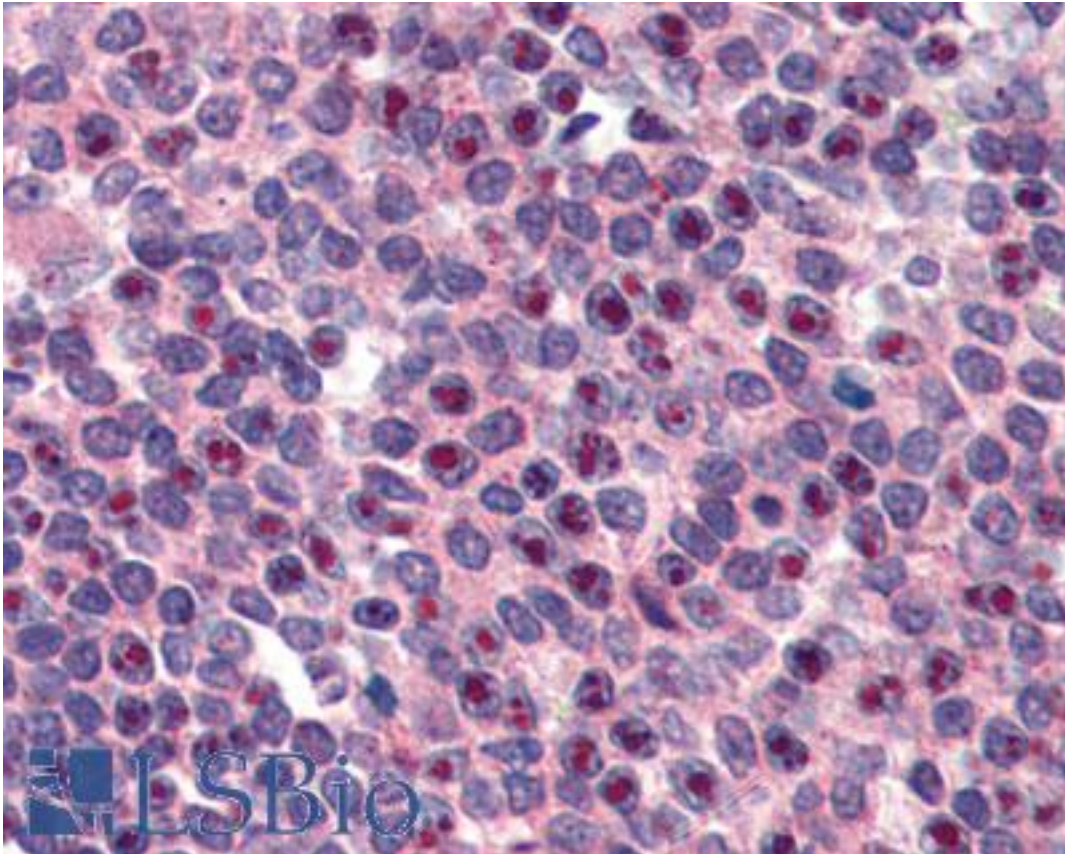


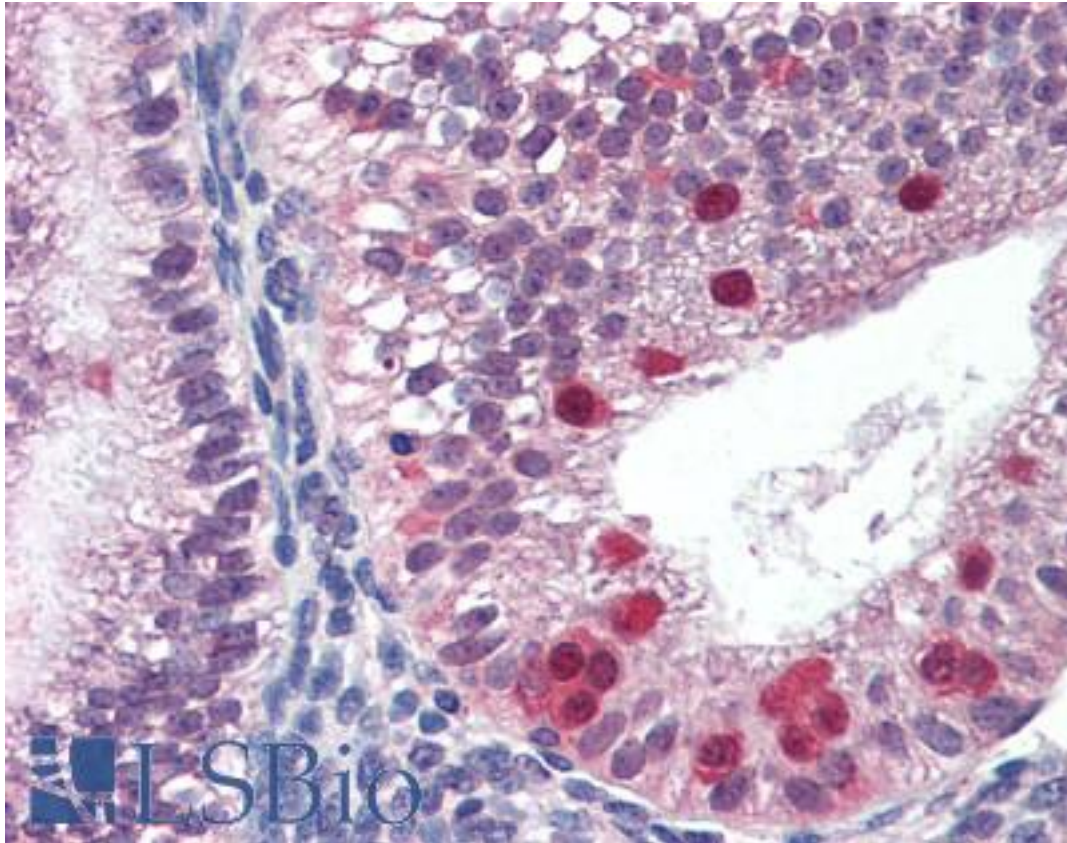
FANCG Goat anti-Human Polyclonal (C-Terminus) Antibody - LS-B2997 - LSBio	
CatalogID:	LS-B2997
Validation:	This antibody replaces catalog number LS-C54813. It has been validated for use in the following assays: IHC-P.
Target:	Fanconi anemia, complementation group G (FANCG)
Synonyms:	FANCG Antibody, DNA repair protein XRCC9 Antibody, Fanconi anemia group G protein Antibody, FAG Antibody, Protein FACG Antibody, XRCC9 Antibody
Host	FANCG antibody was produced in Goat
Clonality:	Polyclonal
Immunogen Species:	FANCG antibody was raised against Human
Antigen Type:	Synthetic peptide
Immunogen:	FANCG antibody was raised against synthetic peptide LEEFRTSLPKSCDL from the C-terminus of human FANCG (NP_004620.1). Percent identity by BLAST analysis: Human, Gorilla, Gibbon, Monkey (100%); Marmoset, Dog (86%).
Specificity:	Human FANCG.
Epitope:	C-Terminus
Reactivity:	Human, Gorilla, Gibbon, Monkey
Purification:	Immunoaffinity purified
Presentation:	Tris-buffered saline, pH 7.3, 0.5% BSA, 0.02% sodium azide
Recommended Storage:	Store at -20°C. Minimize freezing and thawing.
Usage Summary:	Immunohistochemistry: LS-B2997 was validated for use in immunohistochemistry on a panel of 21 formalin-fixed, paraffin-embedded (FFPE) human tissues after heat induced antigen retrieval in pH 6.0 citrate buffer. After incubation with the primary antibody, slides were incubated with biotinylated secondary antibody, followed by alkaline phosphatase-streptavidin and chromogen. The stained slides were evaluated by a pathologist to confirm staining specificity. The optimal working concentration for LS-B2997 was determined to be 3 ug/ml.
Uses:	IHC - Paraffin (3 µg/ml), Western blot (0.5 - 1 µg/ml), ELISA (1:32000) (Optimal dilution to be determined by the researcher)
Size:	50 µg
Concentration:	0.5 mg/ml

Immunohistochemistry Image:



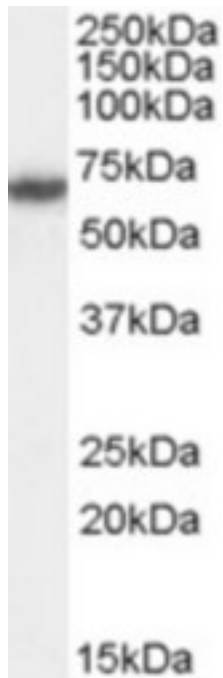
Anti-FANCG antibody IHC of human spleen. Immunohistochemistry of formalin-fixed, paraffin-embedded tissue after heat-induced antigen retrieval. Antibody LS-B2997 concentration 3 ug/ml.

Immunohistochemistry Image:



Anti-FANCG antibody IHC of human uterus. Immunohistochemistry of formalin-fixed, paraffin-embedded tissue after heat-induced antigen retrieval. Antibody LS-B2997 concentration 3 ug/ml.

Western Blot Image:



Antibody (0.5 ug/ml) staining of HeLa cell lysate (35 ug protein in RIPA buffer). Primary incubation was 1 hour. Detected by chemiluminescence.

Requested From:

Japan

Laboratory Reagent For In Vitro Research Use Only

Not for resale without prior written consent from LifeSpan BioSciences, Inc.

Created on 9/23/2014

© 2014 LifeSpan BioSciences