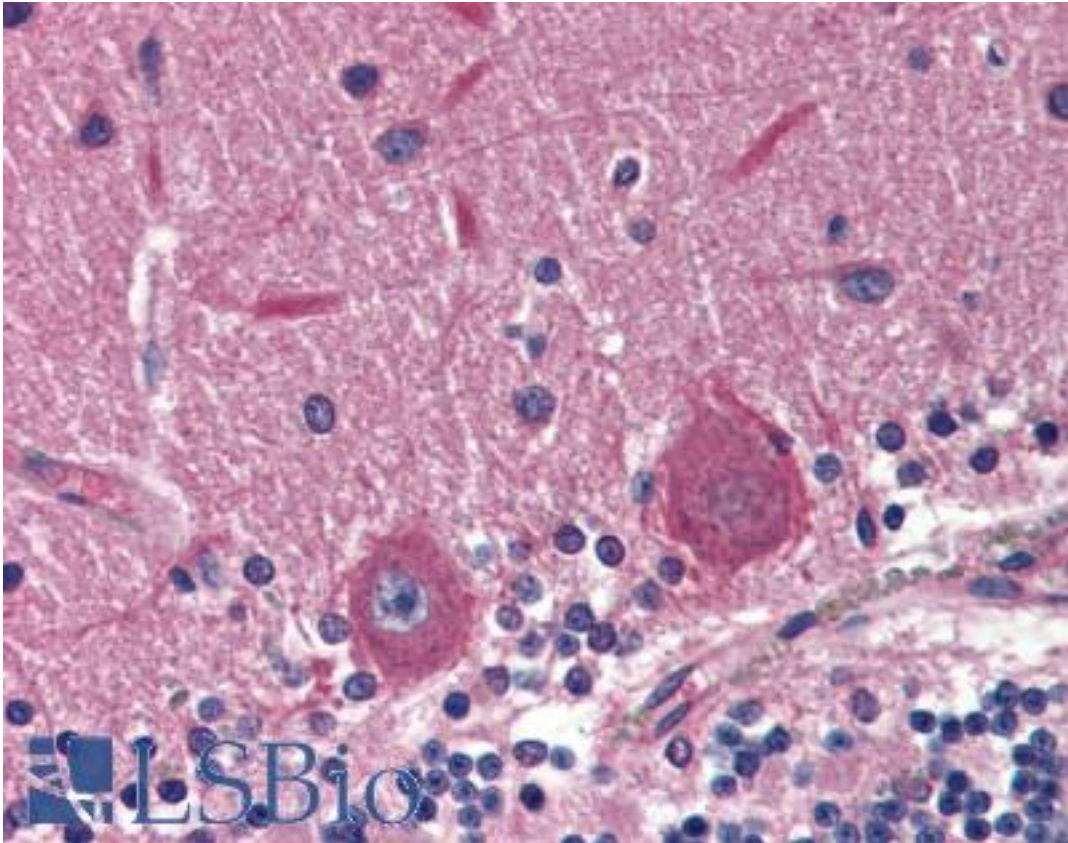


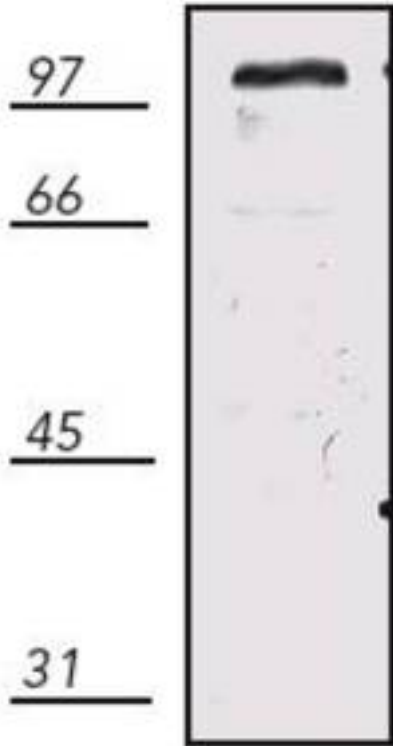
EXOC4 / SEC8 Mouse anti-Rat Monoclonal (14G1) Antibody - LS-B2987 - LSBio	
CatalogID:	LS-B2987
Validation:	This antibody replaces catalog number LS-C63300. It has been validated for use in the following assays: IHC-P.
Target:	exocyst complex component 4 (EXOC4)
Synonyms:	EXOC4 Antibody, Exocyst complex component Sec8 Antibody, Exocyst complex component 4 Antibody, KIAA1699 Antibody, Sec8p Antibody, SEC8-like 1 (S. cerevisiae) Antibody, SEC8 Antibody, SEC8-like 1 Antibody, SEC8L1 Antibody
Host	EXOC4 antibody was produced in Mouse
Clonality:	Monoclonal
Isotype:	IgG1
Clone Name:	14G1
Immunogen Species:	EXOC4 / SEC8 antibody was raised against Rat
Immunogen:	EXOC4 / SEC8 antibody was raised against recombinant rat rSec8 (his-tagged) expressed in E. coli.
Specificity:	Detects an ~110 kD protein, corresponding to the apparent molecular mass of rSec8 on SDS-PAGE immunoblots, in samples from human, mouse, rat, bovine, canine, chicken, fish (rainbow trout) guinea pig, hamster, monkey, pig, rabbit and sheep origins.
Reactivity:	Rat, Human, Monkey, Mouse, Bovine, Dog, Guinea pig, Hamster, Pig, Rabbit, Sheep, Chicken, Trout
Purification:	Protein G purified
Presentation:	PBS, pH 7.2, 0.1 mM PMSF, 50% glycerol.
Recommended Storage:	Long term: -20°C; Short term: +4°C; Avoid freeze-thaw cycles.
Usage Summary:	Immunohistochemistry: LS-B2987 was validated for use in immunohistochemistry on a panel of 21 formalin-fixed, paraffin-embedded (FFPE) human tissues after heat induced antigen retrieval in pH 6.0 citrate buffer. After incubation with the primary antibody, slides were incubated with biotinylated secondary antibody, followed by alkaline phosphatase-streptavidin and chromogen. The stained slides were evaluated by a pathologist to confirm staining specificity. The optimal working concentration for LS-B2987 was determined to be 5 ug/ml.
Uses:	IHC - Paraffin (5 µg/ml), Western blot (1 µg/ml), Immunoprecipitation (12.5 µg/ml) (Optimal dilution to be determined by the researcher)
Size:	50 µg
Concentration:	1 mg/ml

Immunohistochemistry Image:



Anti-EXOC4 / SEC8 antibody IHC of human brain, cerebellum. Immunohistochemistry of formalin-fixed, paraffin-embedded tissue after heat-induced antigen retrieval. Antibody LS-B2987 concentration 5 ug/ml.

Western Blot Image:



Western analysis of rat brain tissue extract.

Requested From:

Japan

Laboratory Reagent For In Vitro Research Use Only

Not for resale without prior written consent from LifeSpan BioSciences, Inc.

Created on 9/23/2014

© 2014 LifeSpan BioSciences