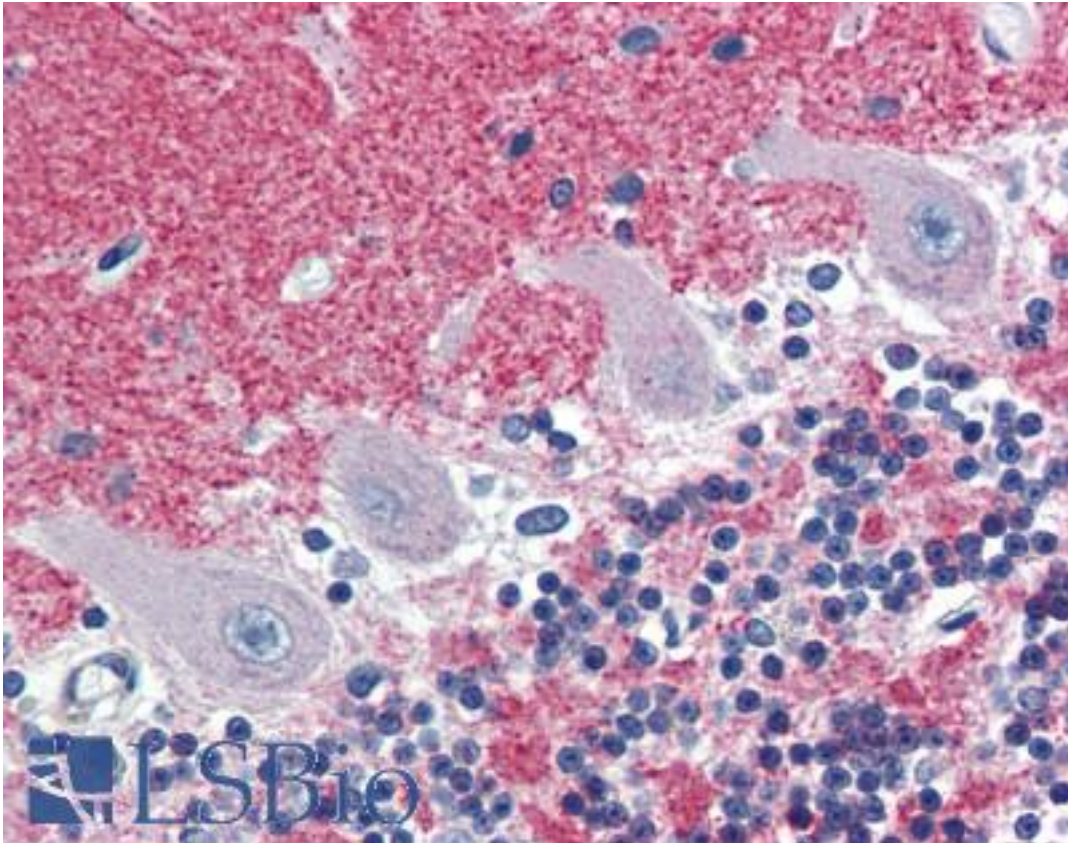


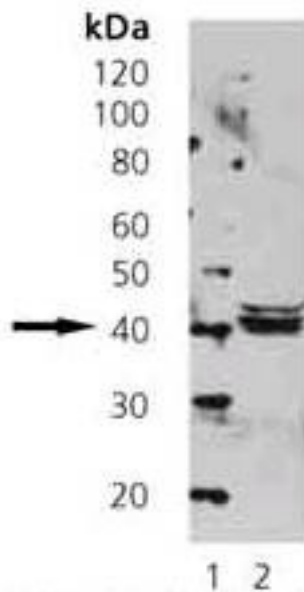
SEPT5 / Septin 5 Mouse anti-Human Monoclonal (SP18) Antibody - LS-B2985 - LSBio	
<b>CatalogID:</b>	LS-B2985
<b>Validation:</b>	This antibody replaces catalog number LS-C63120. It has been validated for use in the following assays: IHC-P.
<b>Target:</b>	septin 5 (SEPT5)
<b>Synonyms:</b>	SEPT5 Antibody, CDCREL-1 Antibody, CDCREL1 Antibody, H5 Antibody, HCDCREL-1 Antibody, Peanut-like 1 (Drosophila) Antibody, Peanut-like 1 Antibody, Peanut-like protein 1 Antibody, Septin 5 Antibody, Septin-5 Antibody, CDCREL Antibody, PNUTL1 Antibody
<b>Host</b>	SEPT5 antibody was produced in Mouse
<b>Clonality:</b>	Monoclonal
<b>Isotype:</b>	IgG1
<b>Clone Name:</b>	SP18
<b>Immunogen Species:</b>	SEPT5 / Septin 5 antibody was raised against Human
<b>Antigen Type:</b>	Purified protein
<b>Immunogen:</b>	SEPT5 / Septin 5 antibody was raised against immunoprecipitate of human brain.
<b>Reactivity:</b>	Human, Mouse, Rat
<b>Purification:</b>	Protein G purified
<b>Presentation:</b>	PBS, pH 7.2, 50% glycerol, 0.09% azide.
<b>Recommended Storage:</b>	+4°C or -20°C, Avoid repeated freezing and thawing.
<b>Usage Summary:</b>	Immunohistochemistry: LS-B2985 was validated for use in immunohistochemistry on a panel of 21 formalin-fixed, paraffin-embedded (FFPE) human tissues after heat induced antigen retrieval in pH 6.0 citrate buffer. After incubation with the primary antibody, slides were incubated with biotinylated secondary antibody, followed by alkaline phosphatase-streptavidin and chromogen. The stained slides were evaluated by a pathologist to confirm staining specificity. The optimal working concentration for LS-B2985 was determined to be 20 ug/ml.
<b>Uses:</b>	IHC - Paraffin (20 µg/ml), Western blot (1 µg/ml) (Optimal dilution to be determined by the researcher)
<b>Size:</b>	50 µg
<b>Concentration:</b>	1 mg/ml

**Immunohistochemistry Image:**



Anti-SEPT5 / Septin 5 antibody IHC of human brain, cerebellum. Immunohistochemistry of formalin-fixed, paraffin-embedded tissue after heat-induced antigen retrieval. Antibody LS-B2985 concentration 20 ug/ml.

**Western Blot Image:**



Human Brain Extract probed with LS-B2985.

Requested From:

Japan

Laboratory Reagent For In Vitro Research Use Only

Not for resale without prior written consent from LifeSpan BioSciences, Inc.

Created on 9/23/2014

© 2014 LifeSpan BioSciences