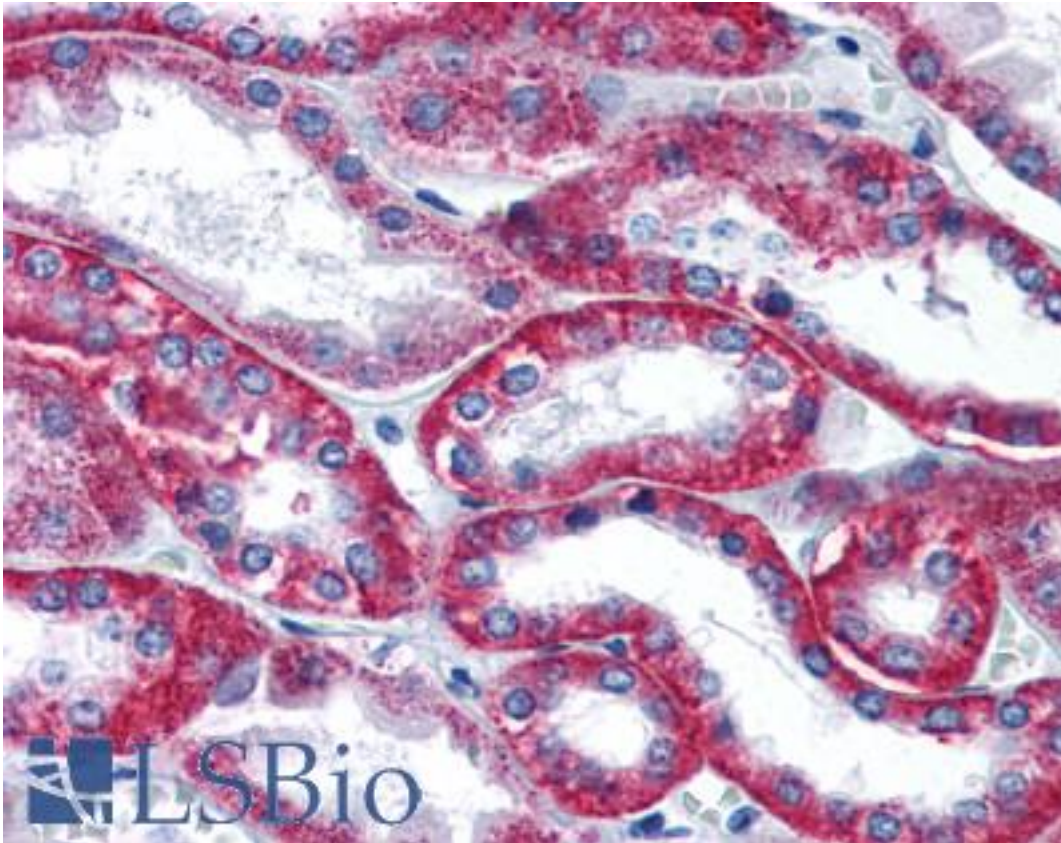


SDC2 / Syndecan 2 Rabbit anti-Human Polyclonal (Internal) Antibody - LS-B2981 - LSBio	
CatalogID:	LS-B2981
Validation:	This antibody replaces catalog number LS-C39399. It has been validated for use in the following assays: IHC-P.
Target:	syndecan 2 (SDC2)
Synonyms:	SDC2 Antibody, CD362 Antibody, CD362 antigen Antibody, HSPG Antibody, HSPG1 Antibody, Fibroglycan Antibody, Syndecan proteoglycan 2 Antibody, SYND2 Antibody, Syndecan 2 Antibody, Syndecan-2 Antibody
Host	SDC2 antibody was produced in Rabbit
Clonality:	Polyclonal
Isotype:	IgG
Immunogen Species:	SDC2 / Syndecan 2 antibody was raised against Human
Antigen Type:	Synthetic peptide
Immunogen:	SDC2 / Syndecan 2 antibody was raised against synthetic peptide derived from the internal region of human syndecan-2 (fibroglycan).
Specificity:	Recognizes human syndecan-2 (fibroglycan). It recognizes the unglyconated form and may recognize the glyconated form. On Western Blots, it identifies a single band at ~22kD. An additional band at ~40kD may also be observed which may represent a glycanated form. Reactivity has been confirmed with human A-549 lung carcinoma, HEP-G2 hepatocellular carcinoma, HT-29 colorectal adenocarcinoma, K-562 chronic myelogenous leukemia-bone marrow, TF-1 erythroleukemia-bone marrow and U-2 OS osteosarcoma cell lysates.
Epitope:	Internal
Reactivity:	Human
Purification:	Affinity purified
Presentation:	PBS, pH 7.4, 0.1% sodium azide
Recommended Storage:	Long term: -20°C; Short term: +4°C. Avoid repeat freeze-thaw cycles.
Usage Summary:	Immunohistochemistry: LS-B2981 was validated for use in immunohistochemistry on a panel of 21 formalin-fixed, paraffin-embedded (FFPE) human tissues after heat induced antigen retrieval in pH 6.0 citrate buffer. After incubation with the primary antibody, slides were incubated with biotinylated secondary antibody, followed by alkaline phosphatase-streptavidin and chromogen. The stained slides were evaluated by a pathologist to confirm staining specificity. The optimal working concentration for LS-B2981 was determined to be 5 ug/ml.
Uses:	IHC - Paraffin (5 µg/ml), Western blot (1 - 3 µg/ml), ELISA (0.1 - 1 µg/ml) (Optimal dilution to be determined by the researcher)
Size:	50 µg
Concentration:	0.25 mg/ml

Immunohistochemistry Image:



Anti-SDC2 / Syndecan 2 antibody IHC of human kidney. Immunohistochemistry of formalin-fixed, paraffin-embedded tissue after heat-induced antigen retrieval. Antibody LS-B2981 concentration 5 ug/ml.

Requested From:

Japan

Laboratory Reagent For In Vitro Research Use Only

Not for resale without prior written consent from LifeSpan BioSciences, Inc.

Created on 9/23/2014

© 2014 LifeSpan BioSciences