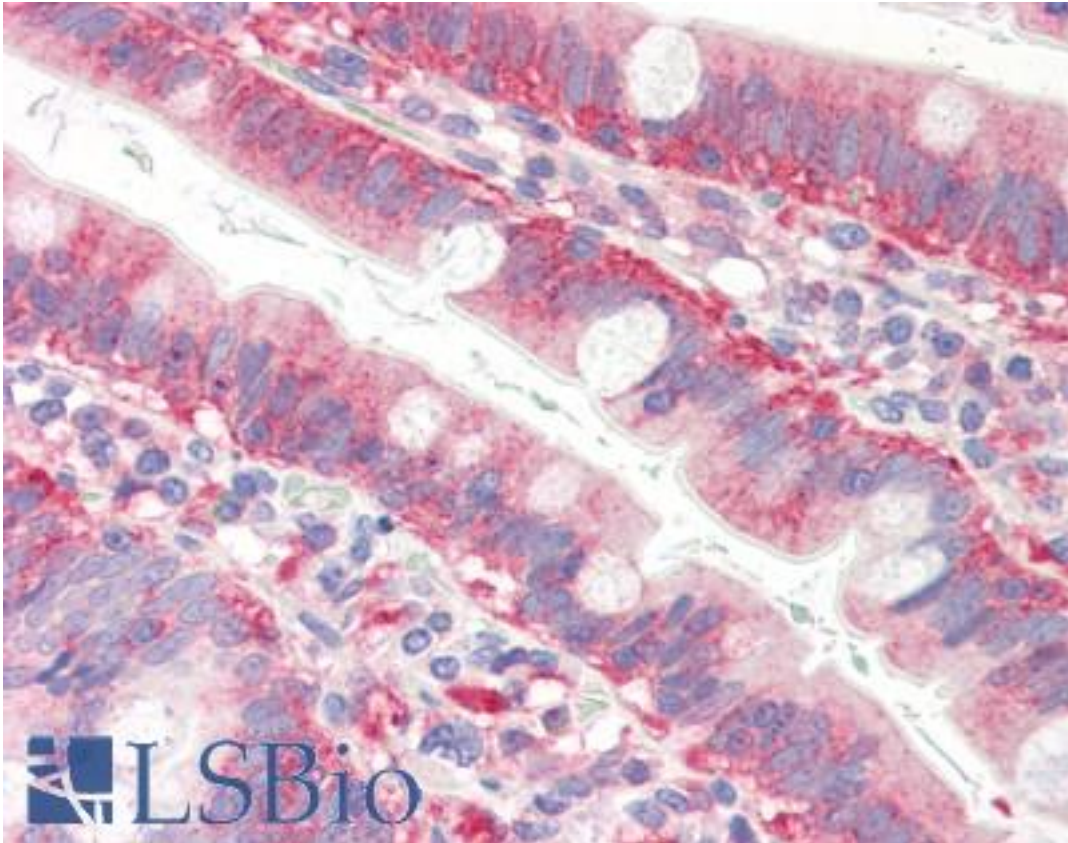


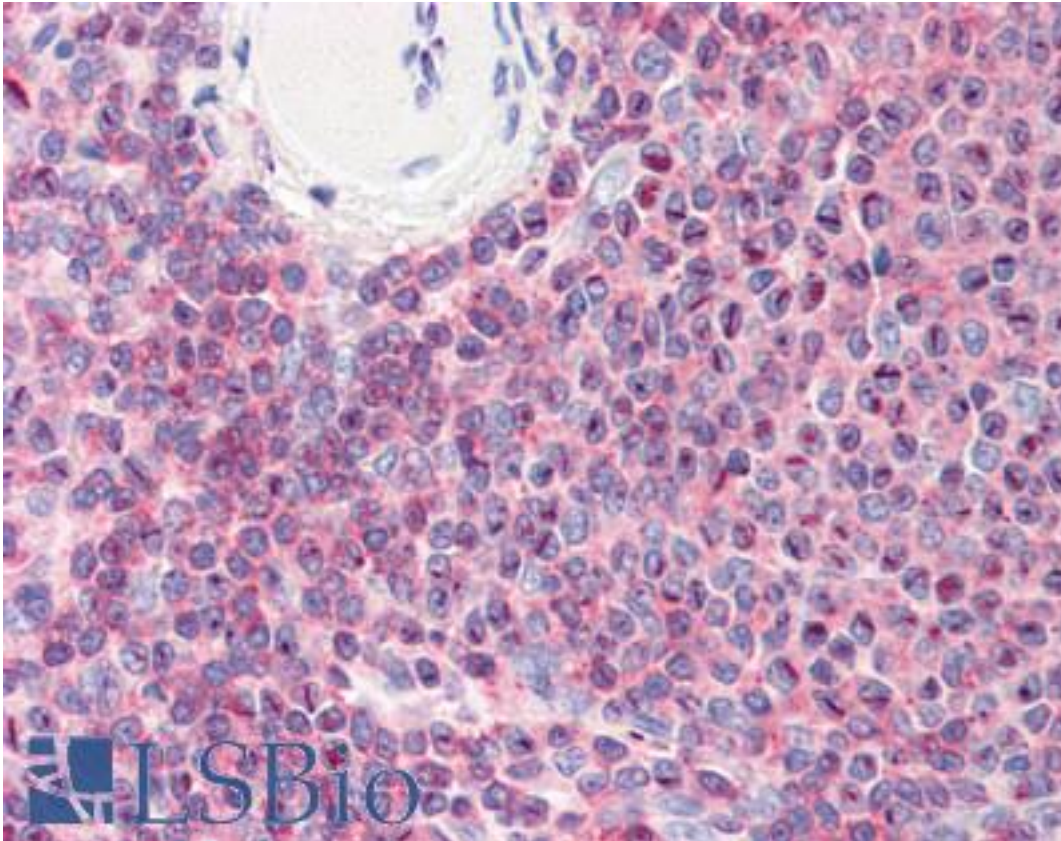
CFL1 / Cofilin Mouse anti-Human Monoclonal (aa1-166) (AT1C1) Antibody - LS-B2971 - LSBio	
CatalogID:	LS-B2971
Validation:	This antibody replaces catalog number LS-C93727. It has been validated for use in the following assays: IHC-P.
Target:	cofilin 1 (non-muscle) (CFL1)
Synonyms:	CFL1 Antibody, 18 kDa phosphoprotein Antibody, Cofilin Antibody, CFL Antibody, Cofilin 1 (non-muscle) Antibody, Cofilin, non-muscle isoform Antibody, p18 Antibody
Host	CFL1 antibody was produced in Mouse
Clonality:	Monoclonal
Isotype:	IgG1,k
Clone Name:	AT1C1
Immunogen Species:	CFL1 / Cofilin antibody was raised against Human
Antigen Type:	Recombinant protein
Immunogen:	CFL1 / Cofilin antibody was raised against recombinant human Cofilin 1 (1-166aa) purified from E. coli. NCBI Accession No.: NP_005498.
Epitope:	aa1-166
Reactivity:	Human
Purification:	Protein G purified
Presentation:	PBS, pH 7.4, 0.1% sodium azide
Recommended Storage:	Short term 4°C, long term aliquot and store at -20°C, avoid freeze thaw cycles.
Usage Summary:	Immunohistochemistry: LS-B2971 was validated for use in immunohistochemistry on a panel of 21 formalin-fixed, paraffin-embedded (FFPE) human tissues after heat induced antigen retrieval in pH 6.0 citrate buffer. After incubation with the primary antibody, slides were incubated with biotinylated secondary antibody, followed by alkaline phosphatase-streptavidin and chromogen. The stained slides were evaluated by a pathologist to confirm staining specificity. The optimal working concentration for LS-B2971 was determined to be 10 ug/ml.
Uses:	IHC - Paraffin (10 µg/ml), Western blot (1:1000 - 1:2000), ELISA (Optimal dilution to be determined by the researcher)
Size:	50 µg
Concentration:	1 mg/ml

Immunohistochemistry Image:



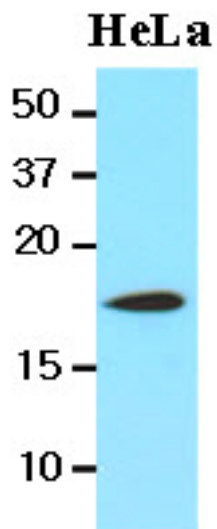
Anti-CFL1 / Cofilin antibody IHC of human small intestine. Immunohistochemistry of formalin-fixed, paraffin-embedded tissue after heat-induced antigen retrieval. Antibody LS-B2971 concentration 10 ug/ml.

Immunohistochemistry Image:



Anti-CFL1 / Cofilin antibody IHC of human spleen. Immunohistochemistry of formalin-fixed, paraffin-embedded tissue after heat-induced antigen retrieval. Antibody LS-B2971 concentration 10 ug/ml.

Western Blot Image:



The lysates of HeLa(20 ug) were resolved by SDS-PAGE, transferred to NC membrane and probed with anti-human Cofilin 1(1:1000) antibody. Proteins were visualized using a goat anti-mouse secondary antibody conjugated to HRP and an ECL detection system.

Requested From:	Japan
Laboratory Reagent For In Vitro Research Use Only	
Not for resale without prior written consent from LifeSpan BioSciences, Inc.	
Created on 9/23/2014	
© 2014 LifeSpan BioSciences	