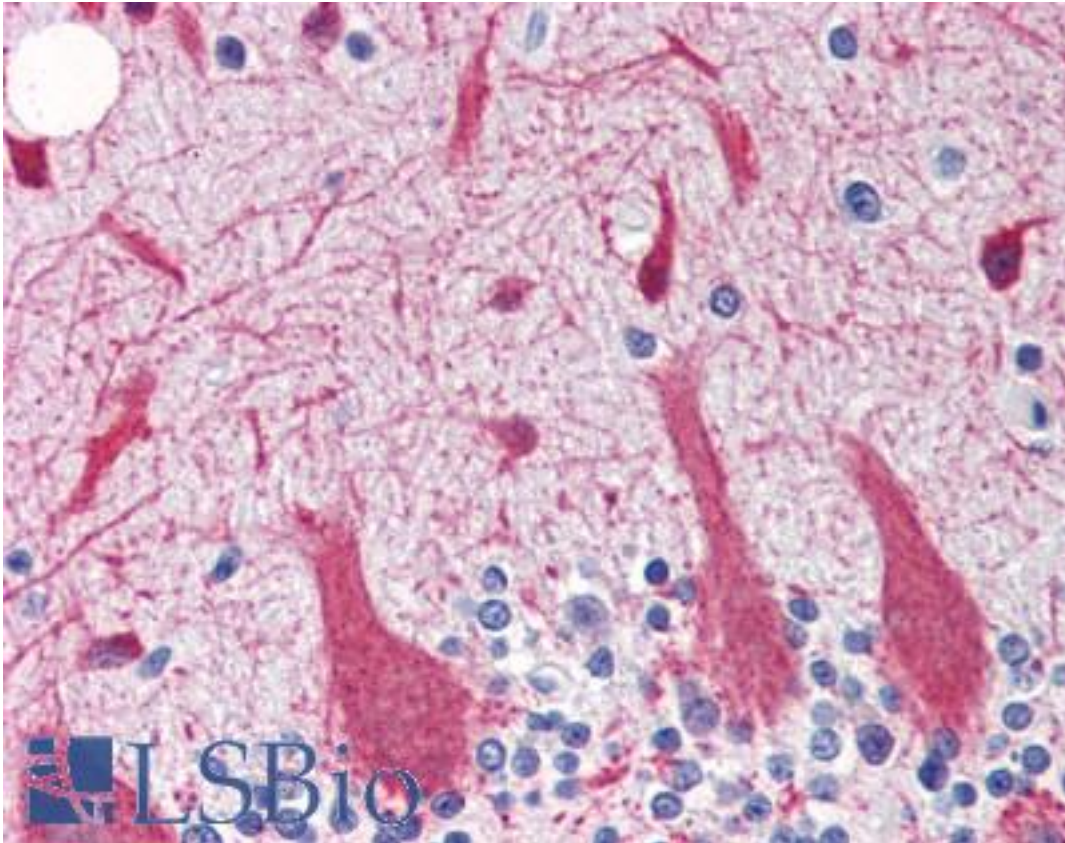


SNCG / Gamma-Synuclein Rabbit anti-Human Polyclonal Antibody - LS-B2968 - LSBio

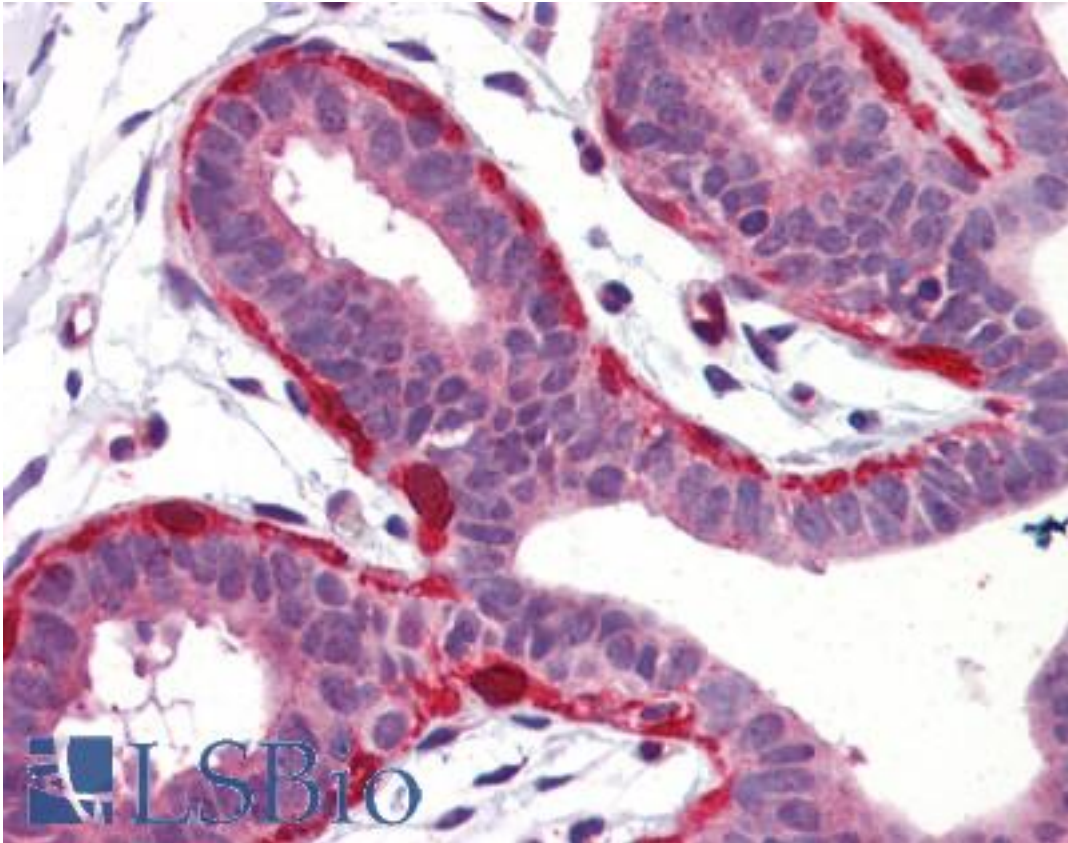
CatalogID:	LS-B2968
Validation:	This antibody replaces catalog number LS-C93825. It has been validated for use in the following assays: IHC-P.
Target:	synuclein, gamma (breast cancer-specific protein 1) (SNCG)
Synonyms:	SNCG Antibody, BCSG1 Antibody, Gamma-synuclein Antibody, PRSN Antibody, SR Antibody, PERSYN Antibody, Synoretin Antibody
Host	SNCG antibody was produced in Rabbit
Clonality:	Polyclonal
Immunogen Species:	SNCG / Gamma-Synuclein antibody was raised against Human
Antigen Type:	Recombinant protein
Immunogen:	SNCG / Gamma-Synuclein antibody was raised against recombinant human gamma-Synuclein purified from E. coli.
Specificity:	This antibody is specific for gamma-synuclein and does not cross-react with alpha- and beta-synuclein.
Reactivity:	Human
Purification:	Protein A purified
Presentation:	PBS, pH 7.4, 0.1% sodium azide
Recommended Storage:	Long term: -20°C; Short term: +4°C; Avoid freeze-thaw cycles.
Usage Summary:	Immunohistochemistry: LS-B2968 was validated for use in immunohistochemistry on a panel of 21 formalin-fixed, paraffin-embedded (FFPE) human tissues after heat induced antigen retrieval in pH 6.0 citrate buffer. After incubation with the primary antibody, slides were incubated with biotinylated secondary antibody, followed by alkaline phosphatase-streptavidin and chromogen. The stained slides were evaluated by a pathologist to confirm staining specificity. The optimal working concentration for LS-B2968 was determined to be 5 ug/ml.
Uses:	IHC - Paraffin (5 µg/ml), Western blot (1:500 - 1:2000), ELISA (Optimal dilution to be determined by the researcher)
Size:	50 µl

Immunohistochemistry Image:



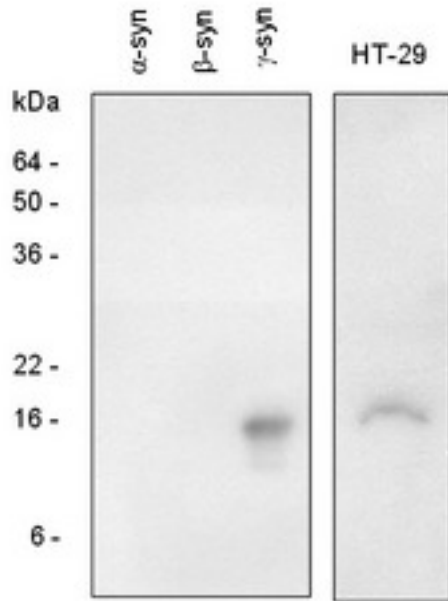
Anti-SNCG antibody IHC of human brain, cerebellum. Immunohistochemistry of formalin-fixed, paraffin-embedded tissue after heat-induced antigen retrieval. Antibody LS-B2968 concentration 5 ug/ml.

Immunohistochemistry Image:



Anti-SNCG antibody IHC of human breast. Immunohistochemistry of formalin-fixed, paraffin-embedded tissue after heat-induced antigen retrieval. Antibody LS-B2968 concentration 5 ug/ml.

Western Blot Image:



The recombinant synuclein family (alpha-, beta- and gamma-) and the extracts of HT-29 (colon adenocarcinoma) cells were resolved by SDS-PAGE, transferred to PVDF membrane and probed with polyclonal anti-human gamma-synuclein(1:1000). Proteins were visualized using a goat anti-rabbit secondary antibody conjugated to HRP and the ECL detection system.

Requested From:

Japan

Laboratory Reagent For In Vitro Research Use Only

Not for resale without prior written consent from LifeSpan BioSciences, Inc.

Created on 9/23/2014

© 2014 LifeSpan BioSciences