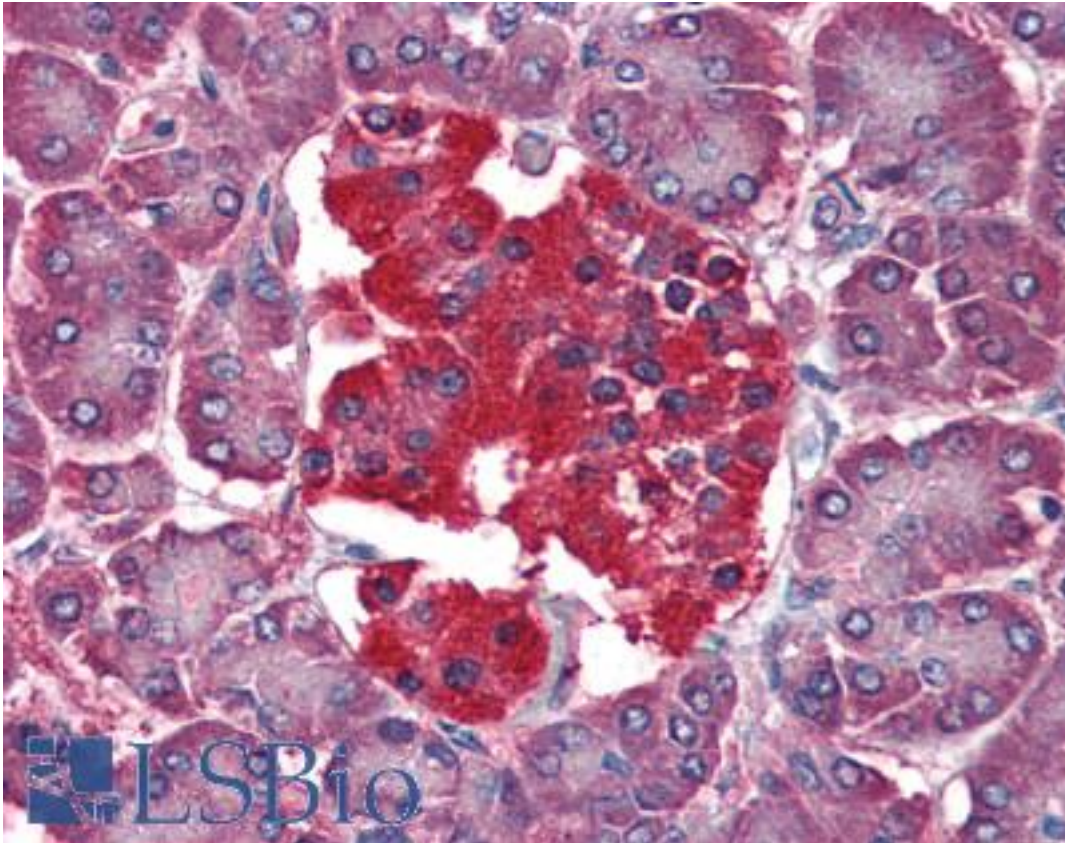


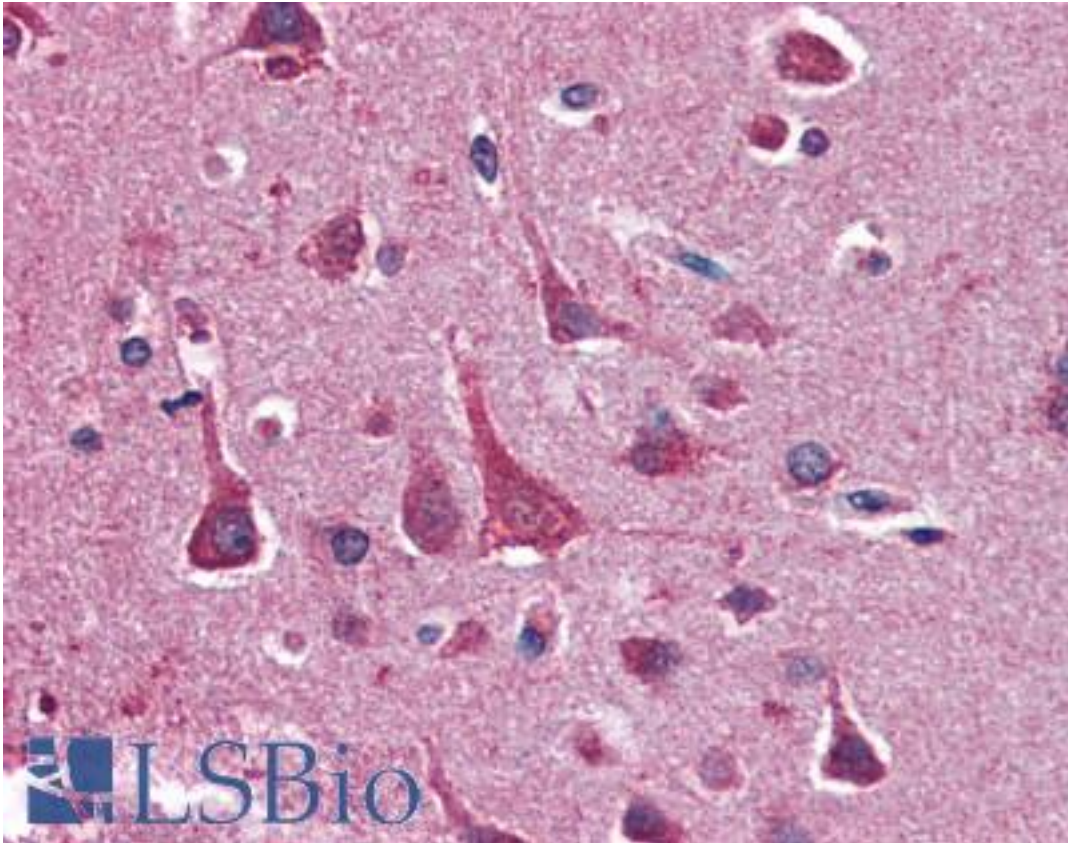
| YWHAQ / 14-3-3 Theta Mouse anti-Human Monoclonal (aa1-245) (AT1A1) Antibody - LS-B2967 - LSBio |  |
|--|--|
| <b>CatalogID:</b>  | LS-B2967   |
| <b>Validation:</b>   | This antibody replaces catalog number LS-C93806. It has been validated for use in the following assays: IHC-P.   |
| <b>Target:</b>   | tyrosine 3-monooxygenase/tryptophan 5-monooxygenase activation protein, theta (YWHAQ)  |
| <b>Synonyms:</b>   | YWHAQ Antibody, 14-3-3 protein T-cell Antibody, 14-3-3 protein theta Antibody, 14-3-3 protein tau Antibody, 14-3-3 Antibody, 14-3-3 Tau Antibody, 1C5 Antibody, Protein HS1 Antibody, HS1 Antibody, Protein tau Antibody   |
| <b>Host</b>  | YWHAQ antibody was produced in Mouse   |
| <b>Clonality:</b>  | Monoclonal   |
| <b>Isotype:</b>  | IgG1   |
| <b>Clone Name:</b>   | AT1A1  |
| <b>Immunogen Species:</b>  | YWHAQ / 14-3-3 Theta antibody was raised against Human   |
| <b>Antigen Type:</b>   | Recombinant protein  |
| <b>Immunogen:</b>  | YWHAQ / 14-3-3 Theta antibody was raised against recombinant human 14-3-3 tau (1-245aa) purified from E. coli. NCBI Accession No.: NP_006817.  |
| <b>Epitope:</b>  | aa1-245  |
| <b>Reactivity:</b>   | Human  |
| <b>Purification:</b>   | Protein G purified   |
| <b>Presentation:</b>   | PBS, pH 7.4, 0.1% sodium azide. Sourced in Ascites.  |
| <b>Recommended Storage:</b>  | Short term 4°C, long term aliquot and store at -20°C, avoid freeze thaw cycles.  |
| <b>Usage Summary:</b>  | Immunohistochemistry: LS-B2967 was validated for use in immunohistochemistry on a panel of 21 formalin-fixed, paraffin-embedded (FFPE) human tissues after heat induced antigen retrieval in pH 6.0 citrate buffer. After incubation with the primary antibody, slides were incubated with biotinylated secondary antibody, followed by alkaline phosphatase-streptavidin and chromogen. The stained slides were evaluated by a pathologist to confirm staining specificity. The optimal working concentration for LS-B2967 was determined to be 10 ug/ml. |
| <b>Uses:</b>   | IHC - Paraffin (10 µg/ml), Western blot (1:1000 - 1:2000), ELISA (Optimal dilution to be determined by the researcher)   |
| <b>Size:</b>   | 50 µg  |
| <b>Concentration:</b>  | 1 mg/ml  |

**Immunohistochemistry Image:**



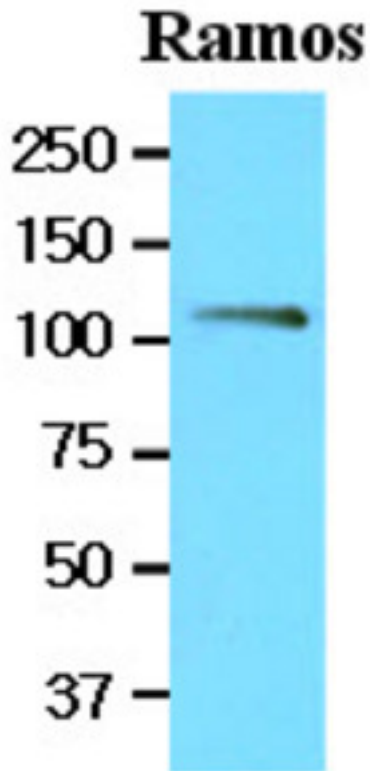
Anti-YWHAQ antibody IHC of human pancreas. Immunohistochemistry of formalin-fixed, paraffin-embedded tissue after heat-induced antigen retrieval. Antibody LS-B2967 concentration 10 ug/ml.

**Immunohistochemistry Image:**

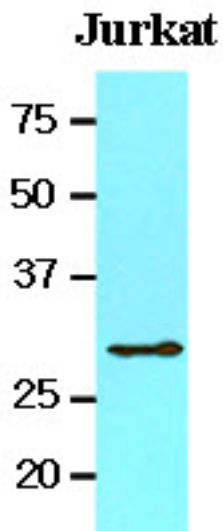


Anti-YWHAQ antibody IHC of human brain, cortex. Immunohistochemistry of formalin-fixed, paraffin-embedded tissue after heat-induced antigen retrieval. Antibody LS-B2967 concentration 10 ug/ml.

Western Blot Image:



Western Blot Image:



Requested From:

Japan

Laboratory Reagent For In Vitro Research Use Only

Not for resale without prior written consent from LifeSpan BioSciences, Inc.

Created on 9/23/2014

© 2014 LifeSpan BioSciences