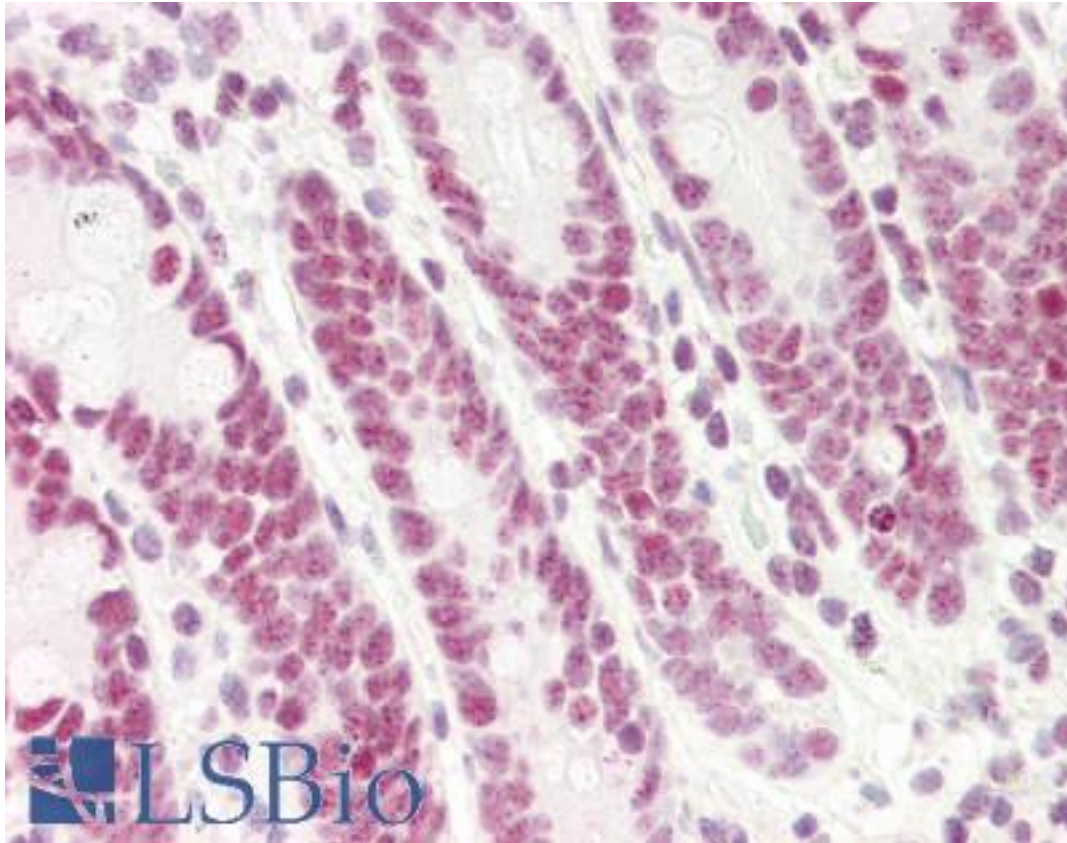


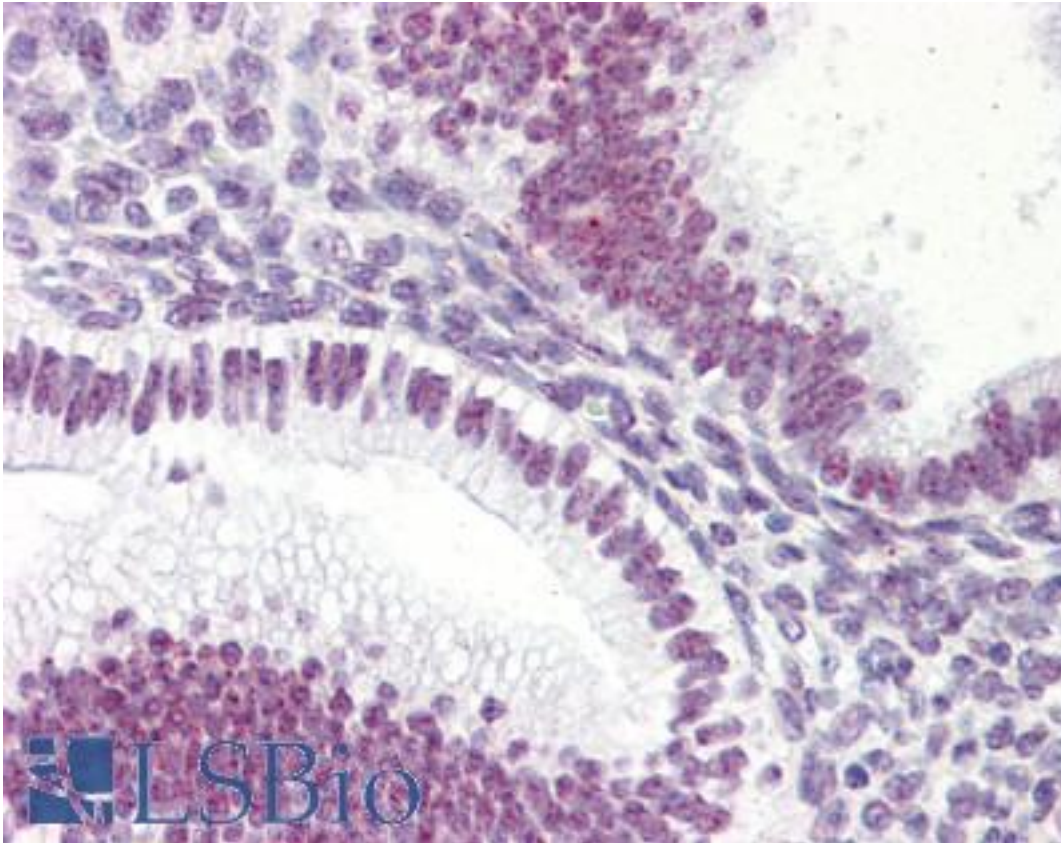
KLF4 Mouse anti-Human Monoclonal (aa1-170) (AT4E6) Antibody - LS-B2966 - LSBio	
<b>CatalogID:</b>	LS-B2966
<b>Validation:</b>	This antibody replaces catalog number LS-C93803. It has been validated for use in the following assays: IHC-P.
<b>Target:</b>	Kruppel-like factor 4 (gut) (KLF4)
<b>Synonyms:</b>	KLF4 Antibody, EZF Antibody, GKLF Antibody, Kruppel-like factor 4 (gut) Antibody, Hezf Antibody, Krueppel-like factor 4 Antibody
<b>Host</b>	KLF4 antibody was produced in Mouse
<b>Clonality:</b>	Monoclonal
<b>Isotype:</b>	IgG1,k
<b>Clone Name:</b>	AT4E6
<b>Immunogen Species:</b>	KLF4 antibody was raised against Human
<b>Immunogen:</b>	KLF4 antibody was raised against recombinant human KLF4 (1-170aa) purified from E. coli. NCBI Accession No.: NP_004226.3.
<b>Epitope:</b>	aa1-170
<b>Reactivity:</b>	Human
<b>Purification:</b>	Protein G purified
<b>Presentation:</b>	PBS, pH 7.4, 0.1% sodium azide. Sourced in Ascites.
<b>Recommended Storage:</b>	Short term 4°C, long term aliquot and store at -20°C, avoid freeze thaw cycles.
<b>Usage Summary:</b>	Immunohistochemistry: LS-B2966 was validated for use in immunohistochemistry on a panel of 21 formalin-fixed, paraffin-embedded (FFPE) human tissues after heat induced antigen retrieval in pH 6.0 citrate buffer. After incubation with the primary antibody, slides were incubated with biotinylated secondary antibody, followed by alkaline phosphatase-streptavidin and chromogen. The stained slides were evaluated by a pathologist to confirm staining specificity. The optimal working concentration for LS-B2966 was determined to be 20 ug/ml.
<b>Uses:</b>	IHC - Paraffin (20 µg/ml), Western blot (1:1000 - 1:2000), ELISA (Optimal dilution to be determined by the researcher)
<b>Size:</b>	50 µg
<b>Concentration:</b>	1 mg/ml

**Immunohistochemistry Image:**



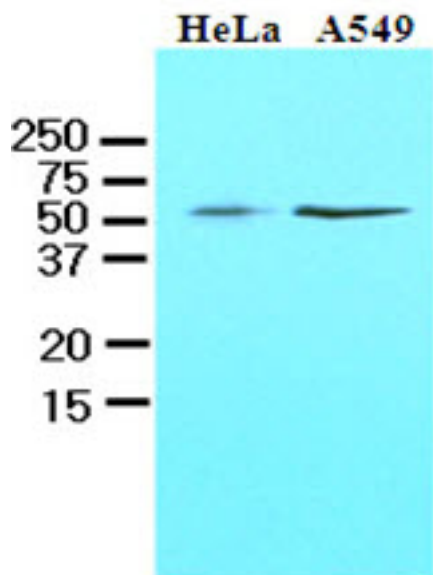
Anti-KLF4 antibody IHC of human small intestine. Immunohistochemistry of formalin-fixed, paraffin-embedded tissue after heat-induced antigen retrieval. Antibody LS-B2966 concentration 20 ug/ml.

**Immunohistochemistry Image:**



Anti-KLF4 antibody IHC of human uterus. Immunohistochemistry of formalin-fixed, paraffin-embedded tissue after heat-induced antigen retrieval. Antibody LS-B2966 concentration 20 ug/ml.

**Western Blot Image:**



Cell lysates of HeLa and A549 (40 ug) were resolved by SDS-PAGE, transferred to NC membrane and probed with anti-human KLF4 (1:1000). Proteins were visualized using a goat anti-mouse secondary antibody conjugated to HRP and an ECL detection system.

<b>Requested From:</b>	Japan
Laboratory Reagent For In Vitro Research Use Only	
Not for resale without prior written consent from LifeSpan BioSciences, Inc.	
Created on 9/23/2014	
© 2014 LifeSpan BioSciences	