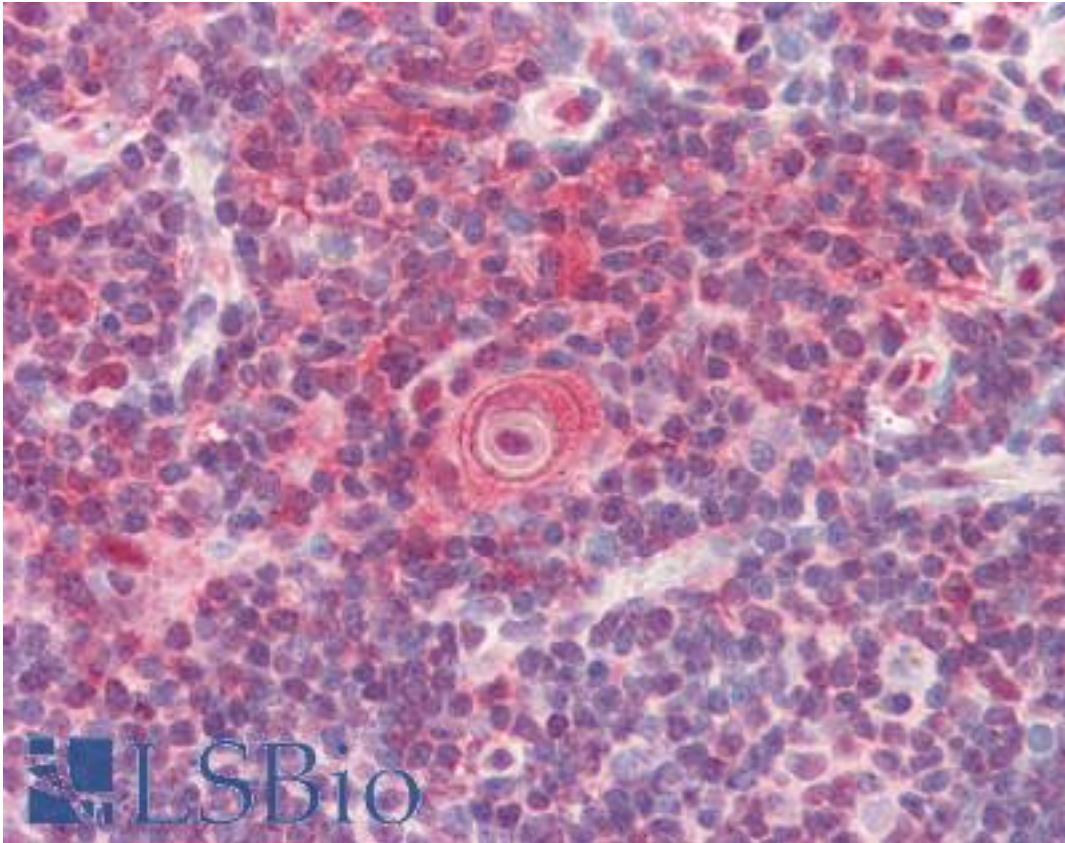


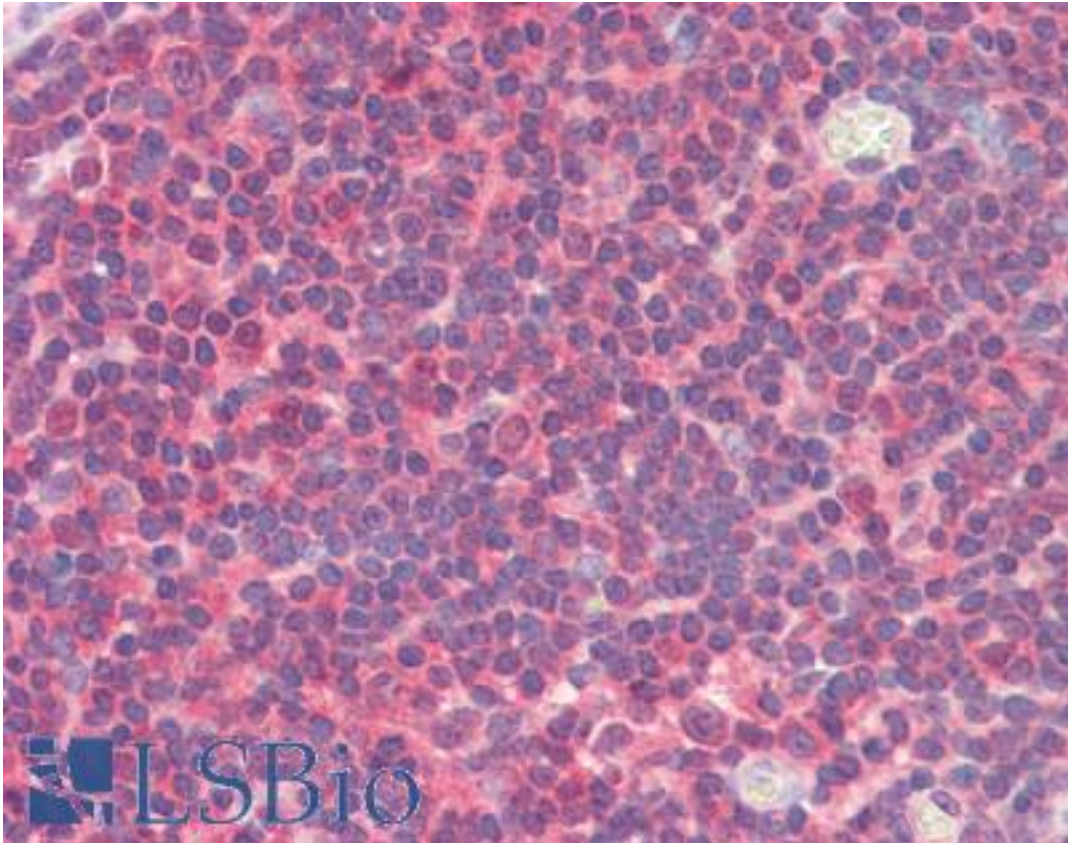
UBE2L6 Mouse anti-Human Monoclonal (aa1-152) (K1H3) Antibody - LS-B2964 - LSBio	
CatalogID:	LS-B2964
Validation:	This antibody replaces catalog number LS-C93812. It has been validated for use in the following assays: IHC-P.
Target:	ubiquitin-conjugating enzyme E2L 6 (UBE2L6)
Synonyms:	UBE2L6 Antibody, Ubiquitin carrier protein L6 Antibody, Ubiquitin-protein ligase L6 Antibody, UBCH8 Antibody, RIG-B Antibody
Host	UBE2L6 antibody was produced in Mouse
Clonality:	Monoclonal
Isotype:	IgG2b,k
Clone Name:	K1H3
Immunogen Species:	UBE2L6 antibody was raised against Human
Antigen Type:	Recombinant protein
Immunogen:	UBE2L6 antibody was raised against recombinant human UBE2L6 (1-152aa) purified from E. coli. NCBI Accession No.: NP_004214.
Epitope:	aa1-152
Reactivity:	Human
Purification:	Protein G purified
Presentation:	PBS, pH 7.4, 0.1% sodium azide. Sourced in Ascites.
Recommended Storage:	Long term: -20°C; Short term: +4°C; Avoid freeze-thaw cycles.
Usage Summary:	Immunohistochemistry: LS-B2964 was validated for use in immunohistochemistry on a panel of 21 formalin-fixed, paraffin-embedded (FFPE) human tissues after heat induced antigen retrieval in pH 6.0 citrate buffer. After incubation with the primary antibody, slides were incubated with biotinylated secondary antibody, followed by alkaline phosphatase-streptavidin and chromogen. The stained slides were evaluated by a pathologist to confirm staining specificity. The optimal working concentration for LS-B2964 was determined to be 5 ug/ml.
Uses:	IHC - Paraffin (5 µg/ml), Western blot (1:1000 - 1:3000), ELISA (Optimal dilution to be determined by the researcher)
Size:	50 µg
Concentration:	1 mg/ml

Immunohistochemistry Image:



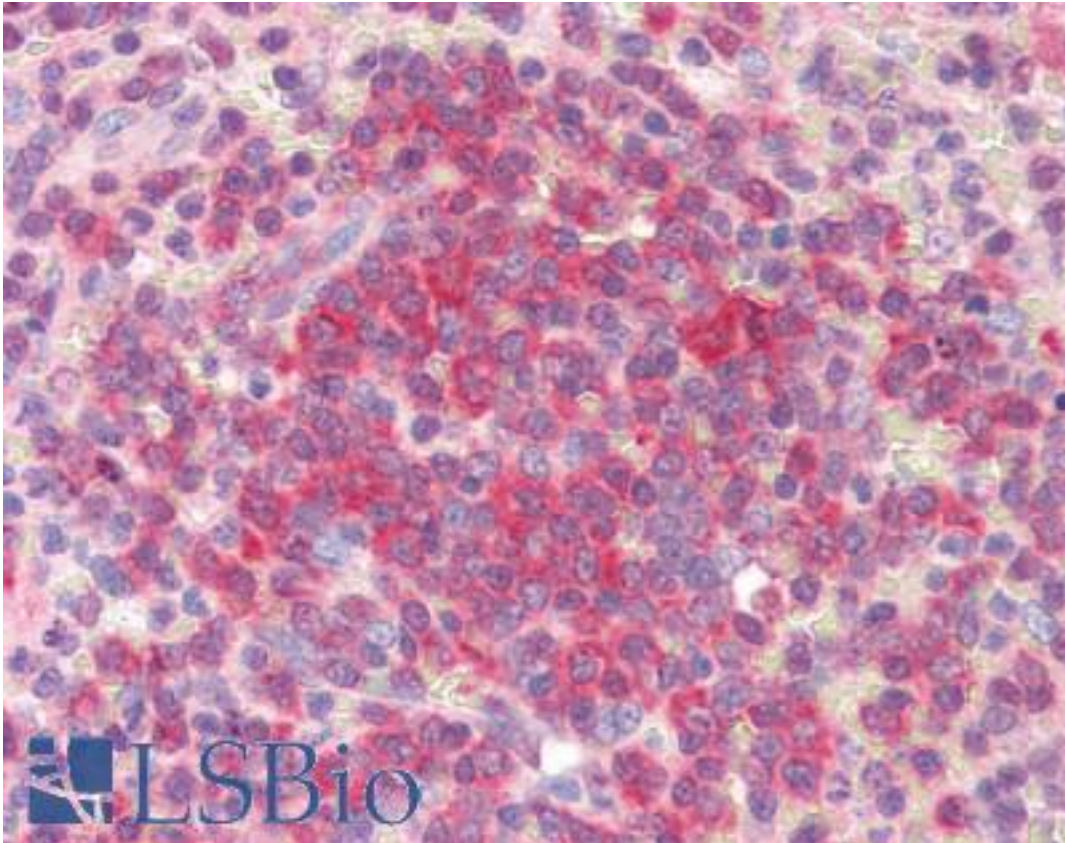
Anti-UBE2L6 antibody IHC of human thymus. Immunohistochemistry of formalin-fixed, paraffin-embedded tissue after heat-induced antigen retrieval. Antibody LS-B2964 concentration 5 ug/ml.

Immunohistochemistry Image:



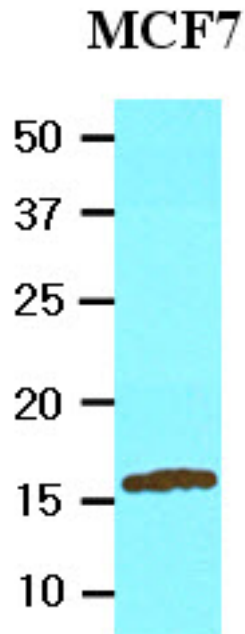
Anti-UBE2L6 antibody IHC of human tonsil. Immunohistochemistry of formalin-fixed, paraffin-embedded tissue after heat-induced antigen retrieval. Antibody LS-B2964 concentration 5 ug/ml.

Immunohistochemistry Image:



Anti-UBE2L6 antibody IHC of human spleen. Immunohistochemistry of formalin-fixed, paraffin-embedded tissue after heat-induced antigen retrieval. Antibody LS-B2964 concentration 5 ug/ml.

Western Blot Image:



Cell lysates of MCF7 (20 ug) were resolved by SDS-PAGE, transferred to NC membrane and probed with anti-human UBE2L6 (1:2000). Proteins were visualized using a goat anti-mouse secondary antibody conjugated to HRP and an ECL detection system.

Requested From:

Japan

Laboratory Reagent For In Vitro Research Use Only

Not for resale without prior written consent from LifeSpan BioSciences, Inc.

Created on 9/23/2014

© 2014 LifeSpan BioSciences