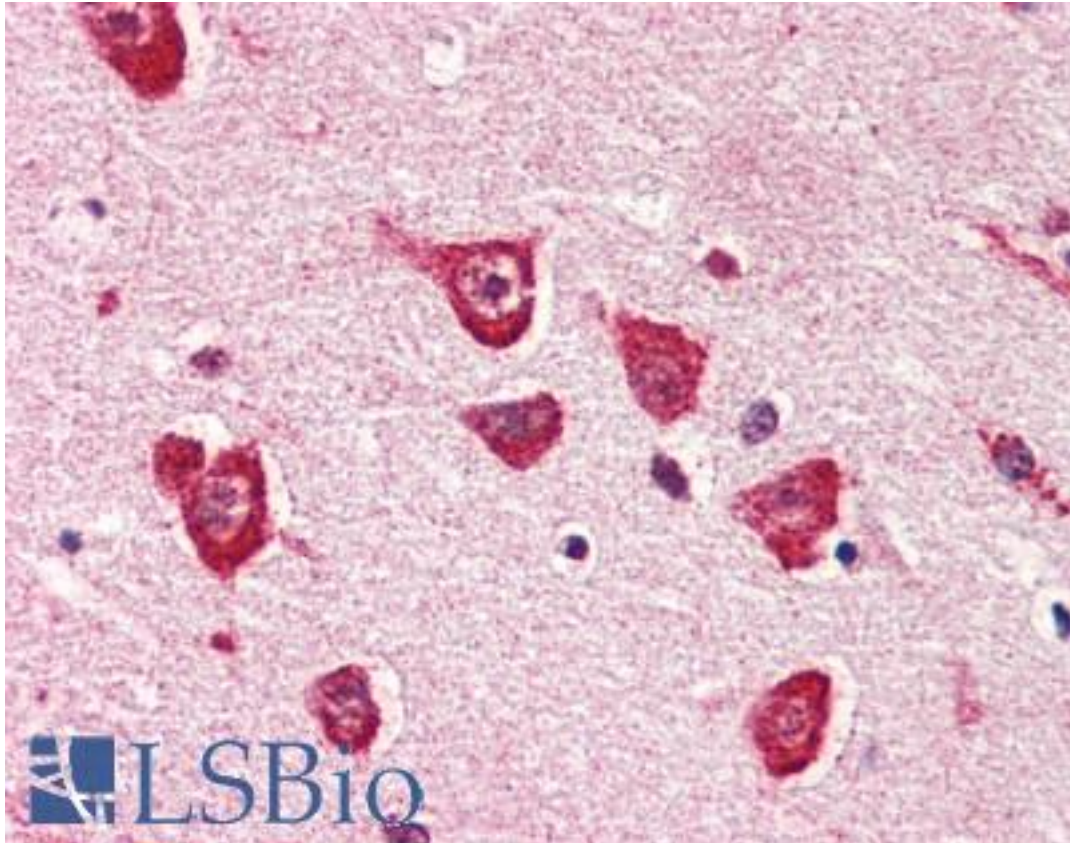


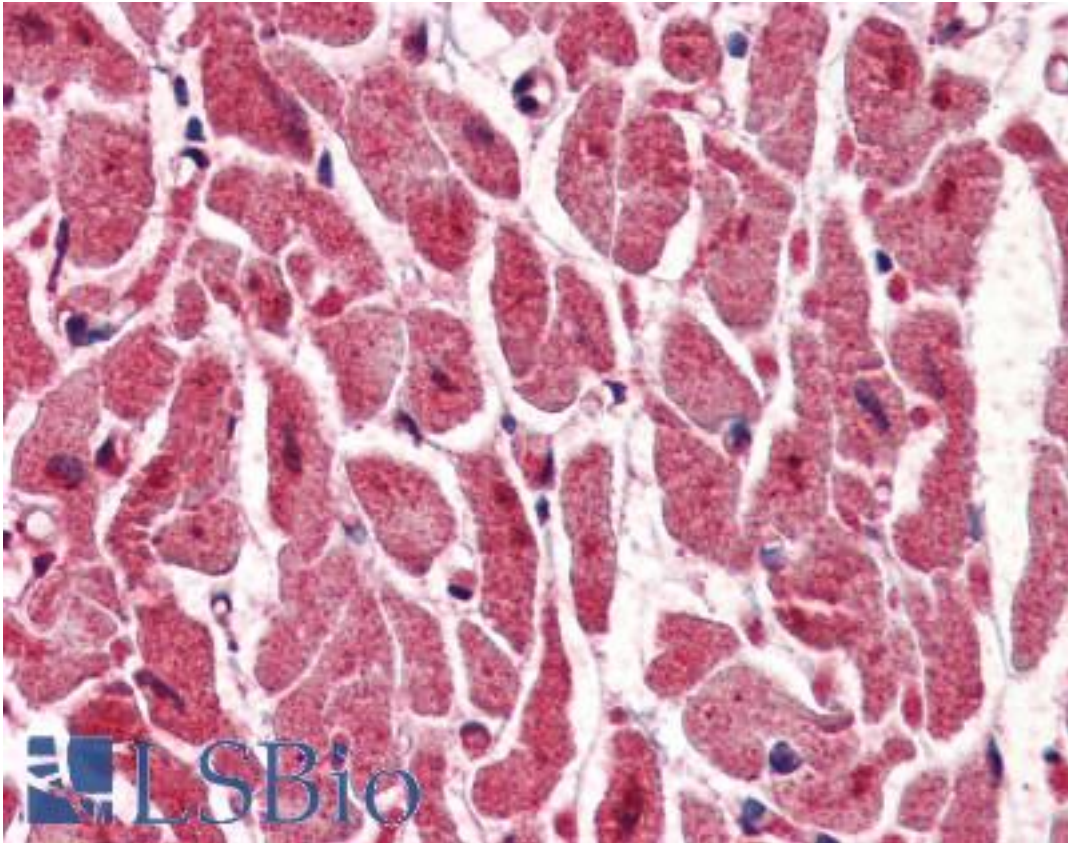
PPM1G Mouse anti-Human Monoclonal (aa317-546) (K1G6) Antibody - LS-B2960 - LSBio	
CatalogID:	LS-B2960
Validation:	This antibody replaces catalog number LS-C93788. It has been validated for use in the following assays: IHC-P.
Target:	protein phosphatase, Mg ²⁺ /Mn ²⁺ dependent, 1G (PPM1G)
Synonyms:	PPM1G Antibody, Phosphatase fin13 Antibody, PP2CG Antibody, PP2C-gamma Antibody, Protein phosphatase 1C Antibody, PP2C, gamma Antibody, PP2CGAMMA Antibody, PPM1C Antibody, PPP2CG Antibody, Protein phosphatase 2c gamma Antibody, Protein phosphatase 1G Antibody
Family / Subfamily:	Protein Phosphatase / PP2C
Host	PPM1G antibody was produced in Mouse
Clonality:	Monoclonal
Isotype:	IgG1,k
Clone Name:	K1G6
Immunogen Species:	PPM1G antibody was raised against Human
Antigen Type:	Recombinant protein
Immunogen:	PPM1G antibody was raised against recombinant human PPM1G (317-546aa) purified from E. coli.
Epitope:	aa317-546
Reactivity:	Human
Purification:	Protein G purified
Presentation:	PBS, pH 7.4, 0.1% sodium azide. Sourced in Ascites.
Recommended Storage:	Long term: -20°C; Short term: +4°C; Avoid freeze-thaw cycles.
Usage Summary:	Immunohistochemistry: LS-B2960 was validated for use in immunohistochemistry on a panel of 21 formalin-fixed, paraffin-embedded (FFPE) human tissues after heat induced antigen retrieval in pH 6.0 citrate buffer. After incubation with the primary antibody, slides were incubated with biotinylated secondary antibody, followed by alkaline phosphatase-streptavidin and chromogen. The stained slides were evaluated by a pathologist to confirm staining specificity. The optimal working concentration for LS-B2960 was determined to be 5 ug/ml.
Uses:	IHC - Paraffin (5 ug/ml), Western blot (1:1000 - 1:2000), ELISA (Optimal dilution to be determined by the researcher)
Size:	50 ug
Concentration:	1 mg/ml

Immunohistochemistry Image:



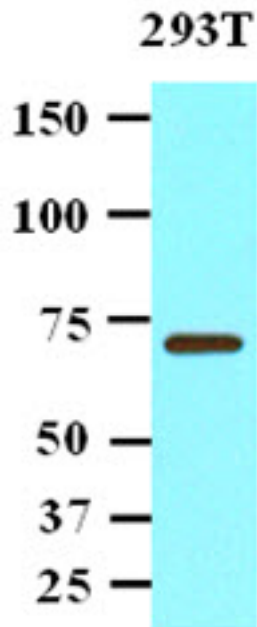
Anti-PPM1G antibody IHC of human brain, cortex. Immunohistochemistry of formalin-fixed, paraffin-embedded tissue after heat-induced antigen retrieval. Antibody LS-B2960 concentration 5 ug/ml.

Immunohistochemistry Image:



Anti-PPM1G antibody IHC of human heart. Immunohistochemistry of formalin-fixed, paraffin-embedded tissue after heat-induced antigen retrieval. Antibody LS-B2960 concentration 5 ug/ml.

Western Blot Image:



Cell lysates of 293T (20 ug) were resolved by SDS-PAGE, transferred to NC membrane and probed with anti-human PPM1G (1:1000). Proteins were visualized using a goat anti-mouse secondary antibody conjugated to HRP and an ECL detection system.

Requested From:

Japan

Laboratory Reagent For In Vitro Research Use Only

Not for resale without prior written consent from LifeSpan BioSciences, Inc.

Created on 9/23/2014

© 2014 LifeSpan BioSciences