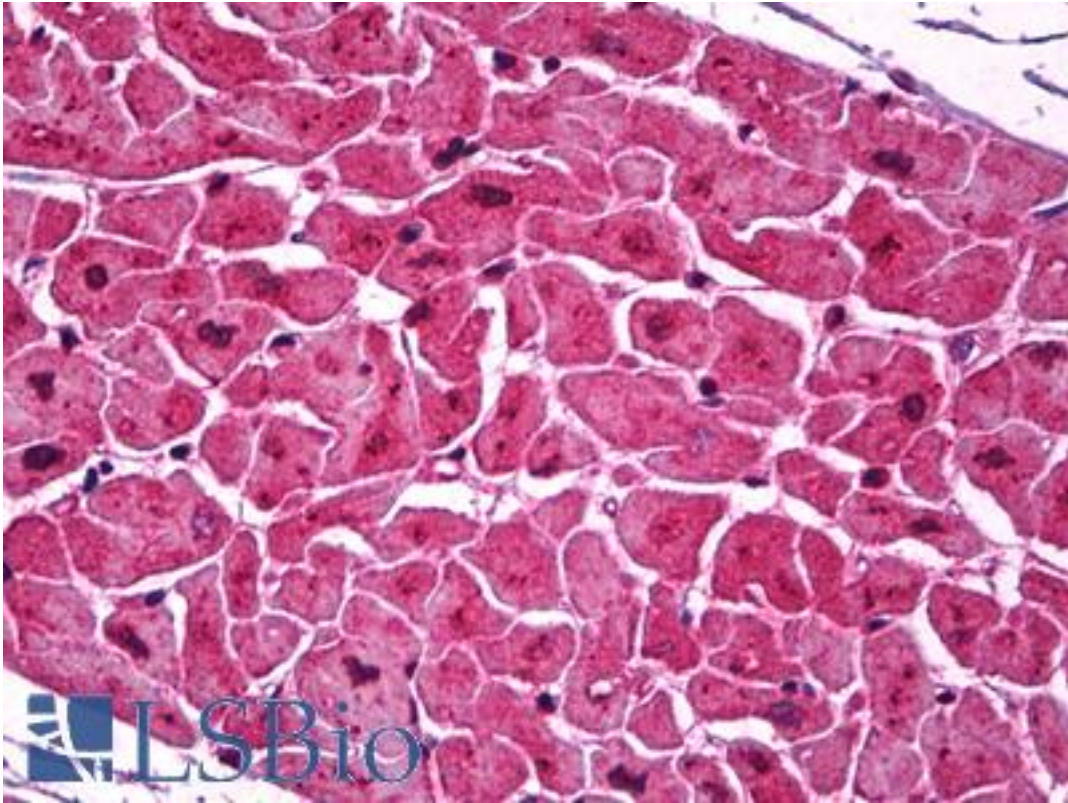


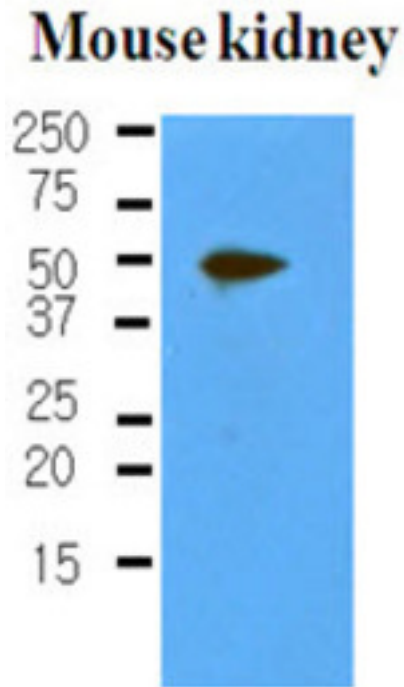
PDPN / Podoplanin Mouse anti-Human Monoclonal (aa1-206) (5E2) Antibody - LS-B2956 - LSBio	
CatalogID:	LS-B2956
Validation:	This antibody replaces catalog number LS-C93779. It has been validated for use in the following assays: IHC-P.
Target:	podoplanin (PDPN)
Synonyms:	PDPN Antibody, AGGRUS Antibody, HT1alpha-1 Antibody, Glycoprotein 36 Antibody, Glycoprotein, 36-KD Antibody, gp36 Antibody, gp38 Antibody, OTS8 Antibody, PA2.26 Antibody, PA2.26 antigen Antibody, Podoplanin Antibody, T1A Antibody, gp40 Antibody, HT1A-1 Antibody, HT1alpha-2 Antibody, T1-alpha Antibody, T1A-2 Antibody
Host	PDPN antibody was produced in Mouse
Clonality:	Monoclonal
Isotype:	IgG2b,k
Clone Name:	5E2
Immunogen Species:	PDPN / Podoplanin antibody was raised against Human
Antigen Type:	Recombinant protein
Immunogen:	PDPN / Podoplanin antibody was raised against recombinant human PDPN (1-206aa) purified from E. coli.
Epitope:	aa1-206
Reactivity:	Human, Mouse
Purification:	Protein G purified
Presentation:	PBS, pH 7.4, 0.1% sodium azide
Recommended Storage:	Long term: -20°C; Short term: +4°C; Avoid freeze-thaw cycles.
Usage Summary:	Immunohistochemistry: LS-B2956 was validated for use in immunohistochemistry on a panel of 21 formalin-fixed, paraffin-embedded (FFPE) human tissues after heat induced antigen retrieval in pH 6.0 citrate buffer. After incubation with the primary antibody, slides were incubated with biotinylated secondary antibody, followed by alkaline phosphatase-streptavidin and chromogen. The stained slides were evaluated by a pathologist to confirm staining specificity. The optimal working concentration for LS-B2956 was determined to be 5 ug/ml.
Uses:	IHC - Paraffin (5 µg/ml), Western blot (1:500 - 1:1000), ELISA (Optimal dilution to be determined by the researcher)
Size:	50 µg
Concentration:	1 mg/ml

Immunohistochemistry Image:



Anti-Podoplanin antibody IHC of human heart. Immunohistochemistry of formalin-fixed, paraffin-embedded tissue after heat-induced antigen retrieval. Antibody LS-B2956 concentration 5 ug/ml.

Western Blot Image:



The extracts of mouse kidney (50 ug) were resolved by SDS-PAGE, transferred to NC membrane and probed with anti-human PDPN (1:500). Proteins were visualized using a goat anti-mouse secondary antibody conjugated to HRP and an ECL detection system.

Requested From:

Japan

Laboratory Reagent For In Vitro Research Use Only

Not for resale without prior written consent from LifeSpan BioSciences, Inc.

Created on 9/23/2014

© 2014 LifeSpan BioSciences