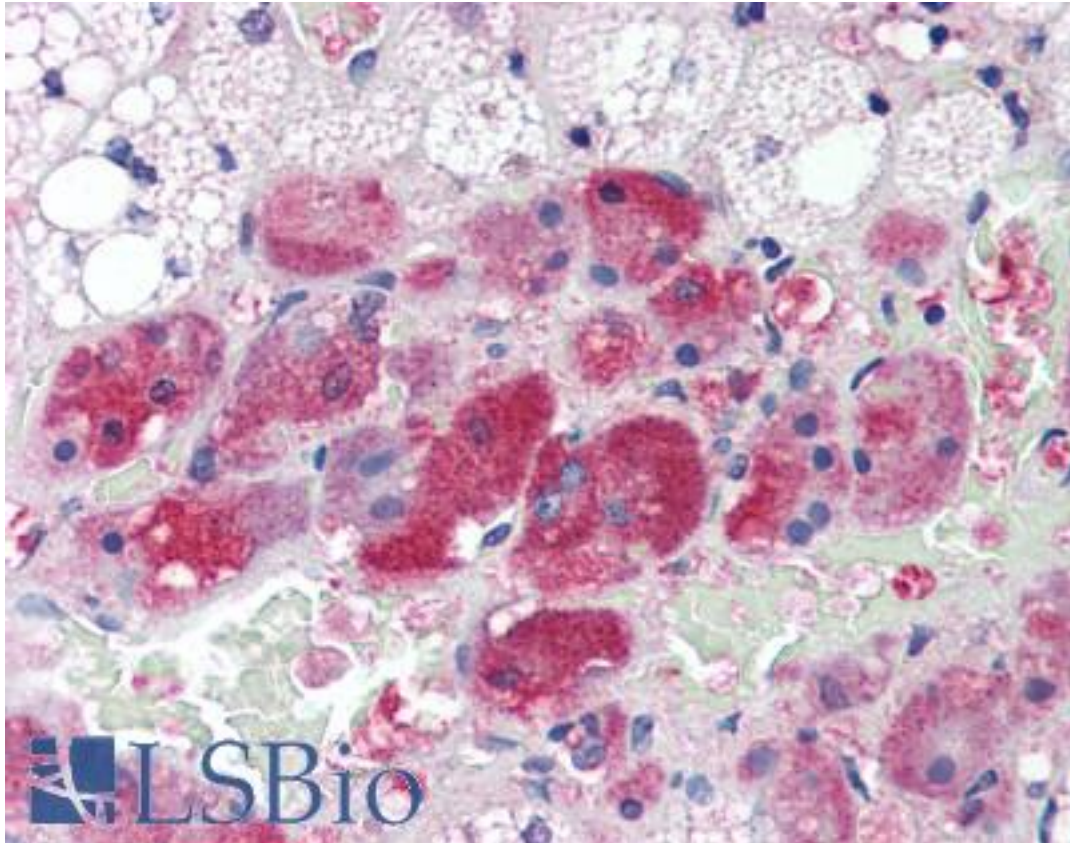


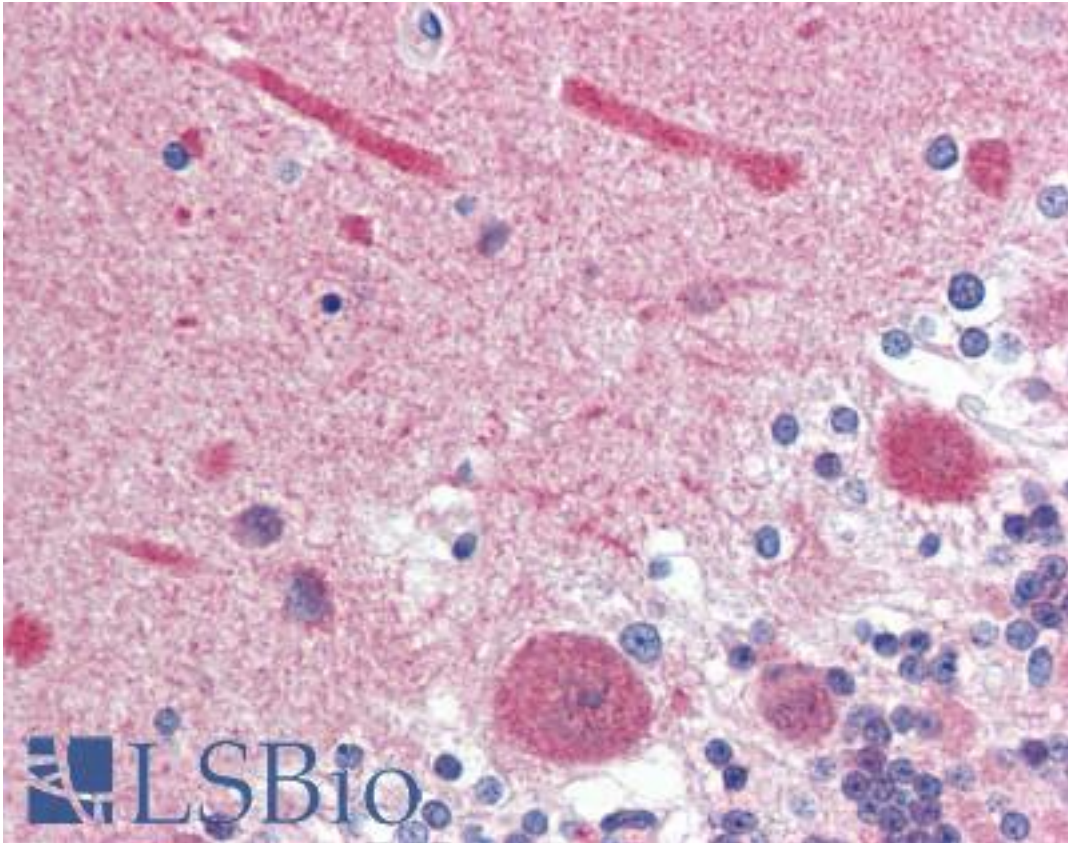
Calmodulin Mouse anti-Human Monoclonal (aa1-149) (J4D8) Antibody - LS-B2955 - LSBio	
CatalogID:	LS-B2955
Validation:	This antibody replaces catalog number LS-C93713. It has been validated for use in the following assays: IHC-P.
Target:	Calmodulin
Host	Calmodulin antibody was produced in Mouse
Clonality:	Monoclonal
Isotype:	IgG2a,k
Clone Name:	J4D8
Immunogen Species:	Calmodulin antibody was raised against Human
Antigen Type:	Recombinant protein
Immunogen:	Calmodulin antibody was raised against recombinant human Calmodulin (1-149aa) purified from E. coli.
Epitope:	aa1-149
Reactivity:	Human
Purification:	Protein G purified
Presentation:	PBS, pH 7.4, 0.1% sodium azide. Sourced in Ascites.
Recommended Storage:	Long term: -20°C; Short term: +4°C; Avoid freeze-thaw cycles.
Usage Summary:	Immunohistochemistry: LS-B2955 was validated for use in immunohistochemistry on a panel of 21 formalin-fixed, paraffin-embedded (FFPE) human tissues after heat induced antigen retrieval in pH 6.0 citrate buffer. After incubation with the primary antibody, slides were incubated with biotinylated secondary antibody, followed by alkaline phosphatase-streptavidin and chromogen. The stained slides were evaluated by a pathologist to confirm staining specificity. The optimal working concentration for LS-B2955 was determined to be 10 ug/ml.
Uses:	IHC - Paraffin (10 µg/ml), Western blot (1:500 - 1:1000), ELISA (Optimal dilution to be determined by the researcher)
Size:	50 µg
Concentration:	1 mg/ml

Immunohistochemistry Image:



Anti-Calmodulin antibody IHC of human adrenal. Immunohistochemistry of formalin-fixed, paraffin-embedded tissue after heat-induced antigen retrieval. Antibody LS-B2955 concentration 10 ug/ml.

Immunohistochemistry Image:



Anti-Calmodulin antibody IHC of human brain, cerebellum. Immunohistochemistry of formalin-fixed, paraffin-embedded tissue after heat-induced antigen retrieval. Antibody LS-B2955 concentration 10 ug/ml.

Western Blot Image:

NIH 3T3



Cell lysates of NIH3T3 (50 ug) were resolved by SDS-PAGE, transferred to NC membrane and probed with anti-human Calmodulin (1:500). Proteins were visualized using a goat anti-mouse secondary antibody conjugated to HRP and an ECL detection system.

Requested From:

Japan

Laboratory Reagent For In Vitro Research Use Only

Not for resale without prior written consent from LifeSpan BioSciences, Inc.

Created on 9/23/2014

© 2014 LifeSpan BioSciences