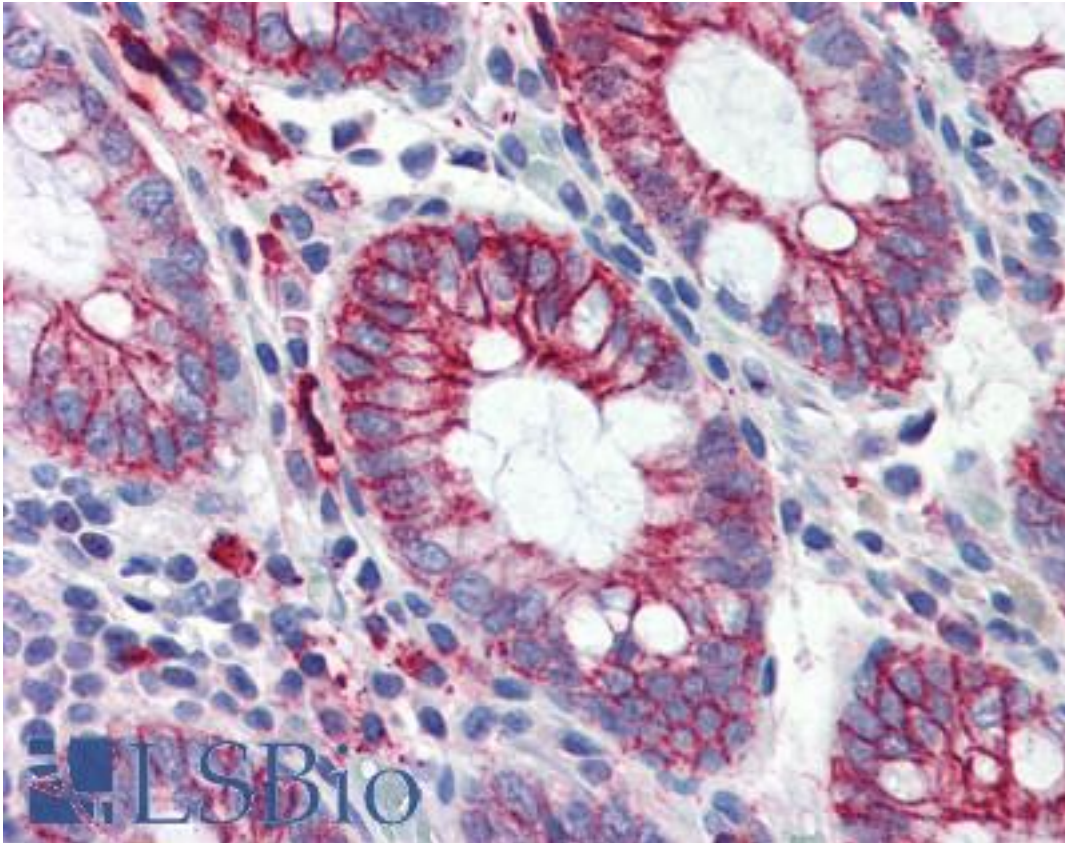


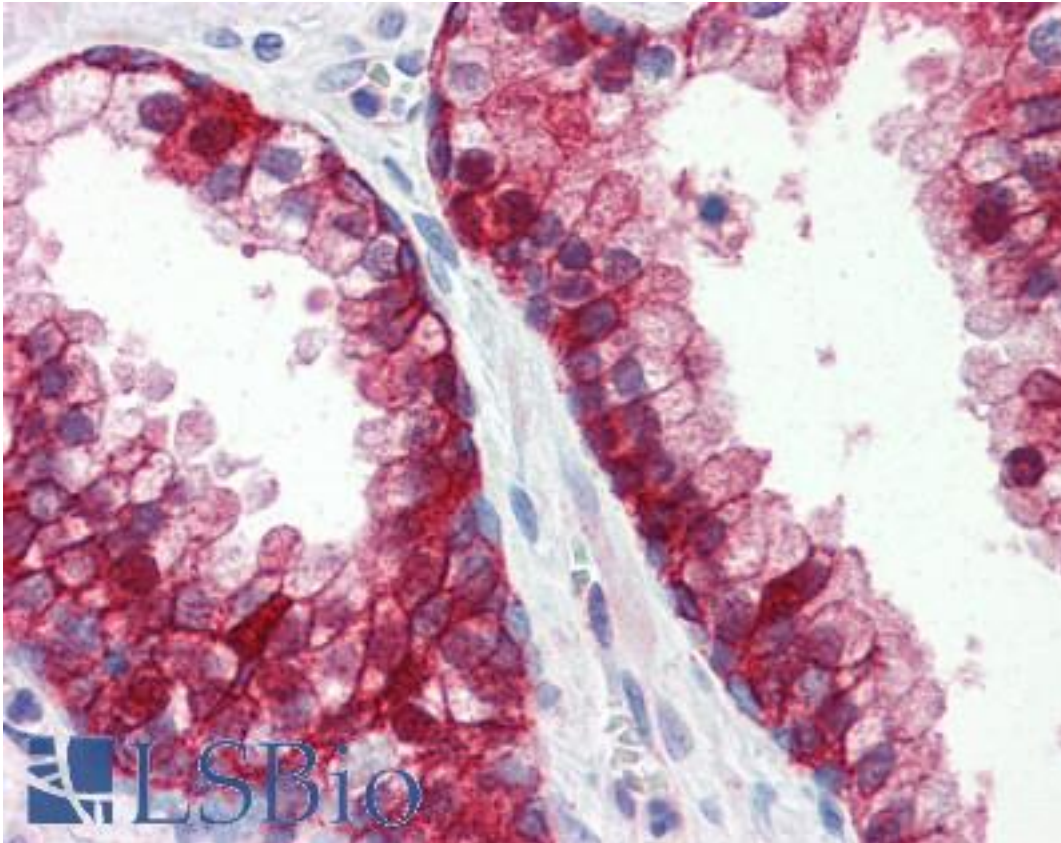
ITGB1 / Integrin Beta 1 / CD29 Mouse anti-Human Monoclonal (aa34-141) (K2D5) Antibody - LS-B2953 - LSBio	
CatalogID:	LS-B2953
Validation:	This antibody replaces catalog number LS-C93720. It has been validated for use in the following assays: IHC-P.
Target:	integrin, beta 1 (fibronectin receptor, beta polypeptide, antigen CD29 includes MDF2, MSK12) (ITGB1)
Synonyms:	ITGB1 Antibody, CD29 Antibody, CD29 antigen Antibody, Integrin beta-1 Antibody, MDF2 Antibody, MSK12 Antibody, Integrin VLA-4 beta subunit Antibody, VLA-BETA Antibody, VLAB Antibody, Beta 1 integrin Antibody, FNRB Antibody, GPIIA Antibody, Integrin Beta 1 Antibody, VLA-4 subunit beta Antibody
Family / Subfamily:	Integrin / not assigned-Integrin
Host	ITGB1 antibody was produced in Mouse
Clonality:	Monoclonal
Isotype:	IgG1,k
Clone Name:	K2D5
Immunogen Species:	ITGB1 / Integrin Beta 1 / CD29 antibody was raised against Human
Antigen Type:	Recombinant protein
Immunogen:	ITGB1 / Integrin Beta 1 / CD29 antibody was raised against recombinant human CD29 (34-141aa) purified from E. coli.
Epitope:	aa34-141
Reactivity:	Human
Purification:	Protein G purified
Presentation:	PBS, pH 7.4, 0.1% sodium azide
Recommended Storage:	Long term: -20°C; Short term: +4°C; Avoid freeze-thaw cycles.
Usage Summary:	Immunohistochemistry: LS-B2953 was validated for use in immunohistochemistry on a panel of 21 formalin-fixed, paraffin-embedded (FFPE) human tissues after heat induced antigen retrieval in pH 6.0 citrate buffer. After incubation with the primary antibody, slides were incubated with biotinylated secondary antibody, followed by alkaline phosphatase-streptavidin and chromogen. The stained slides were evaluated by a pathologist to confirm staining specificity. The optimal working concentration for LS-B2953 was determined to be 10 ug/ml.
Uses:	IHC - Paraffin (10 µg/ml), Western blot (1:500 - 1:1000), ELISA (Optimal dilution to be determined by the researcher)
Size:	50 µg
Concentration:	1 mg/ml

Immunohistochemistry Image:



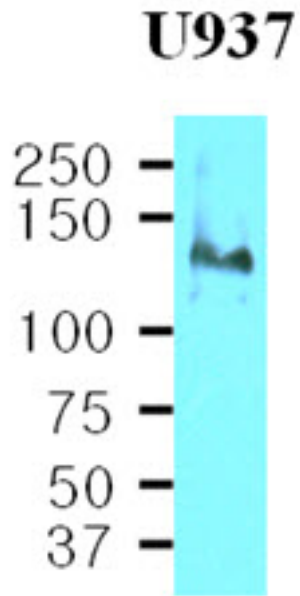
Anti-Integrin Beta 1 antibody IHC of human colon. Immunohistochemistry of formalin-fixed, paraffin-embedded tissue after heat-induced antigen retrieval. Antibody LS-B2953 concentration 10 ug/ml.

Immunohistochemistry Image:



Anti-Integrin Beta 1 antibody IHC of human prostate. Immunohistochemistry of formalin-fixed, paraffin-embedded tissue after heat-induced antigen retrieval. Antibody LS-B2953 concentration 10 ug/ml.

Western Blot Image:



Cell lysates of U937(40 ug) were resolved by SDS-PAGE, transferred to NC membrane and probed with anti-human CD29 (1:500). Proteins were visualized using a goat anti-mouse secondary antibody conjugated to HRP and an ECL detection system.

Requested From:

Japan

Laboratory Reagent For In Vitro Research Use Only

Not for resale without prior written consent from LifeSpan BioSciences, Inc.

Created on 9/23/2014

© 2014 LifeSpan BioSciences