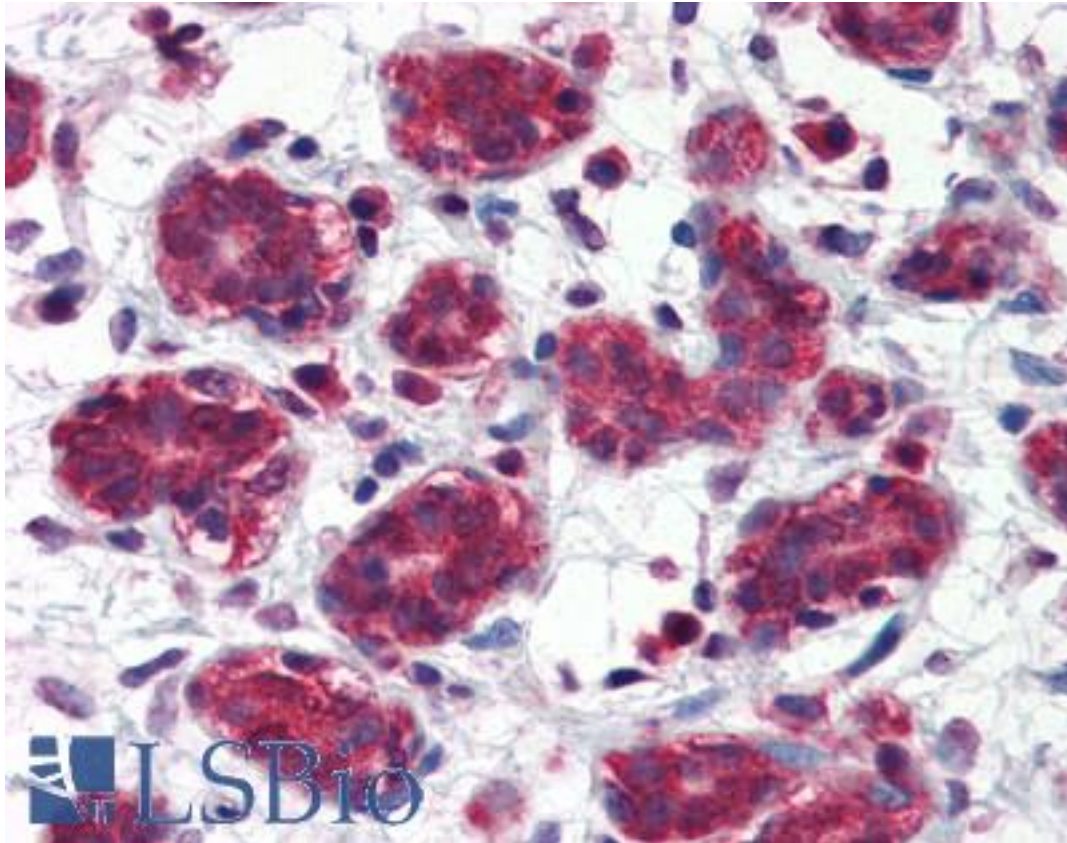


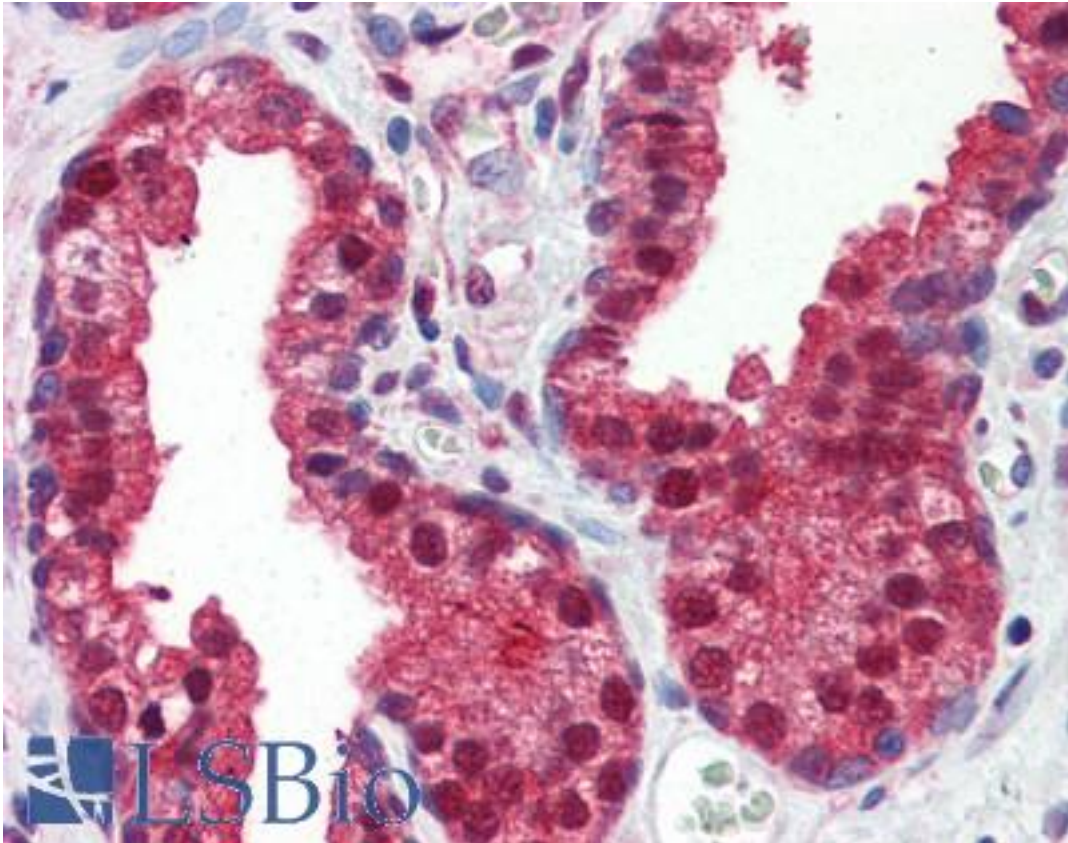
FOLH1 / PSMA Mouse anti-Human Monoclonal (aa117-351) (K1H7) Antibody - LS-B2950 - LSBio	
CatalogID:	LS-B2950
Validation:	This antibody replaces catalog number LS-C93789. It has been validated for use in the following assays: IHC-P.
Target:	folate hydrolase (prostate-specific membrane antigen) 1 (FOLH1)
Synonyms:	FOLH1 Antibody, Folate hydrolase 1 Antibody, GCPII Antibody, Glutamate carboxypeptidase II Antibody, Folate hydrolase Antibody, GCP2 Antibody, NAALAD1 Antibody, NAALAdase Antibody, NAALADase I Antibody, PSM Antibody, FGCP Antibody, FOLH Antibody, Glutamate carboxylase II Antibody, Glutamate carboxypeptidase 2 Antibody, MGCP Antibody, PSMA Antibody
Host	FOLH1 antibody was produced in Mouse
Clonality:	Monoclonal
Isotype:	IgG1,k
Clone Name:	K1H7
Immunogen Species:	FOLH1 / PSMA antibody was raised against Human
Antigen Type:	Recombinant protein
Immunogen:	FOLH1 / PSMA antibody was raised against recombinant human PSMA (117-351aa) purified from E. coli.
Epitope:	aa117-351
Reactivity:	Human
Purification:	Protein G purified
Presentation:	PBS, pH 7.4, 0.1% sodium azide
Recommended Storage:	Long term: -20°C; Short term: +4°C; Avoid freeze-thaw cycles.
Usage Summary:	Immunohistochemistry: LS-B2950 was validated for use in immunohistochemistry on a panel of 21 formalin-fixed, paraffin-embedded (FFPE) human tissues after heat induced antigen retrieval in pH 6.0 citrate buffer. After incubation with the primary antibody, slides were incubated with biotinylated secondary antibody, followed by alkaline phosphatase-streptavidin and chromogen. The stained slides were evaluated by a pathologist to confirm staining specificity. The optimal working concentration for LS-B2950 was determined to be 5 ug/ml.
Uses:	IHC - Paraffin (5 µg/ml), Western blot (1:1000 - 1:3000), ELISA (Optimal dilution to be determined by the researcher)
Size:	50 µg
Concentration:	1 mg/ml

Immunohistochemistry Image:



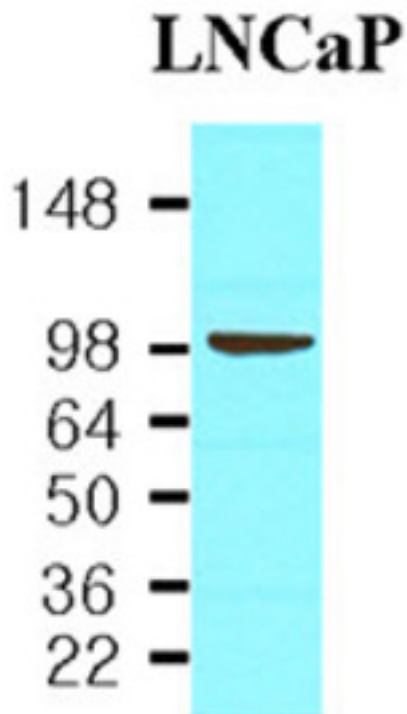
Anti-FOLH1 / PSMA antibody IHC of human breast. Immunohistochemistry of formalin-fixed, paraffin-embedded tissue after heat-induced antigen retrieval. Antibody LS-B2950 concentration 5 ug/ml.

Immunohistochemistry Image:



Anti-FOLH1 / PSMA antibody IHC of human prostate. Immunohistochemistry of formalin-fixed, paraffin-embedded tissue after heat-induced antigen retrieval. Antibody LS-B2950 concentration 5 ug/ml.

Western Blot Image:



Cell lysates of LNCaP(30 ug) were resolved by SDS-PAGE, transferred to NC membrane and probed with anti-human PSMA (1:1000). Proteins were visualized using a goat anti-mouse secondary antibody conjugated to HRP and an ECL detection system.

Requested From:

Japan

Laboratory Reagent For In Vitro Research Use Only

Not for resale without prior written consent from LifeSpan BioSciences, Inc.

Created on 9/23/2014

© 2014 LifeSpan BioSciences