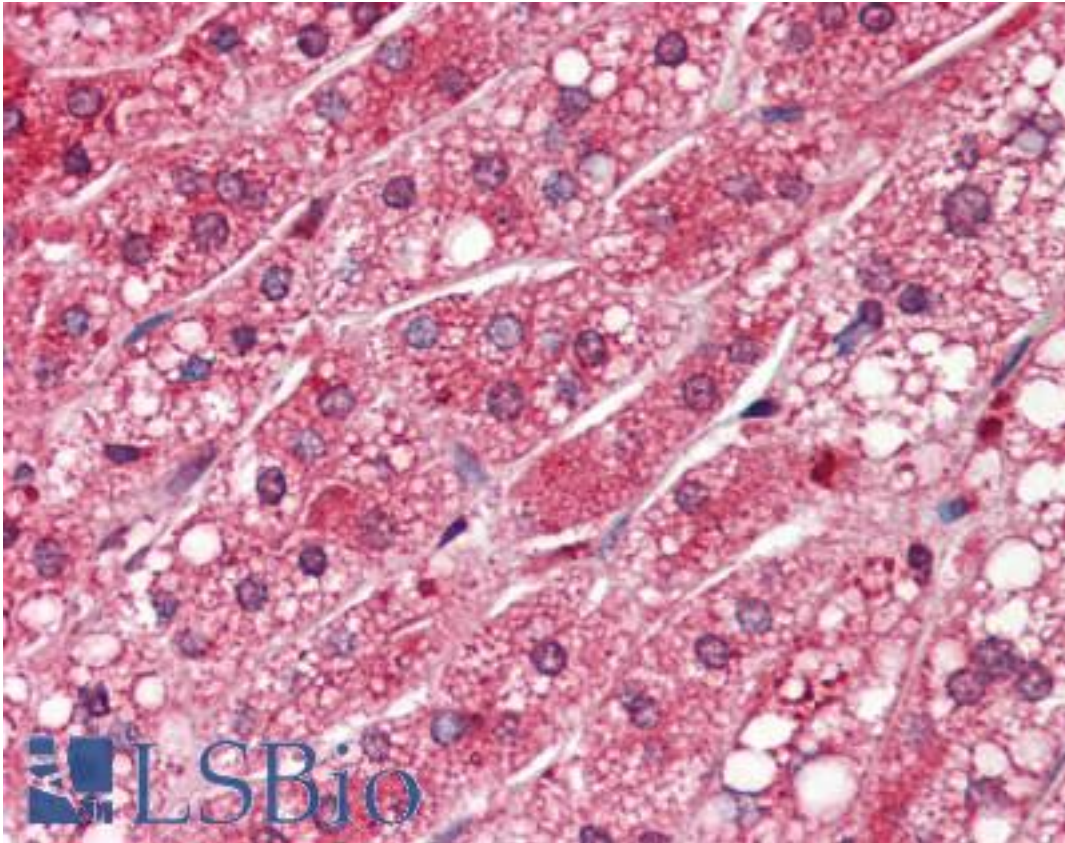


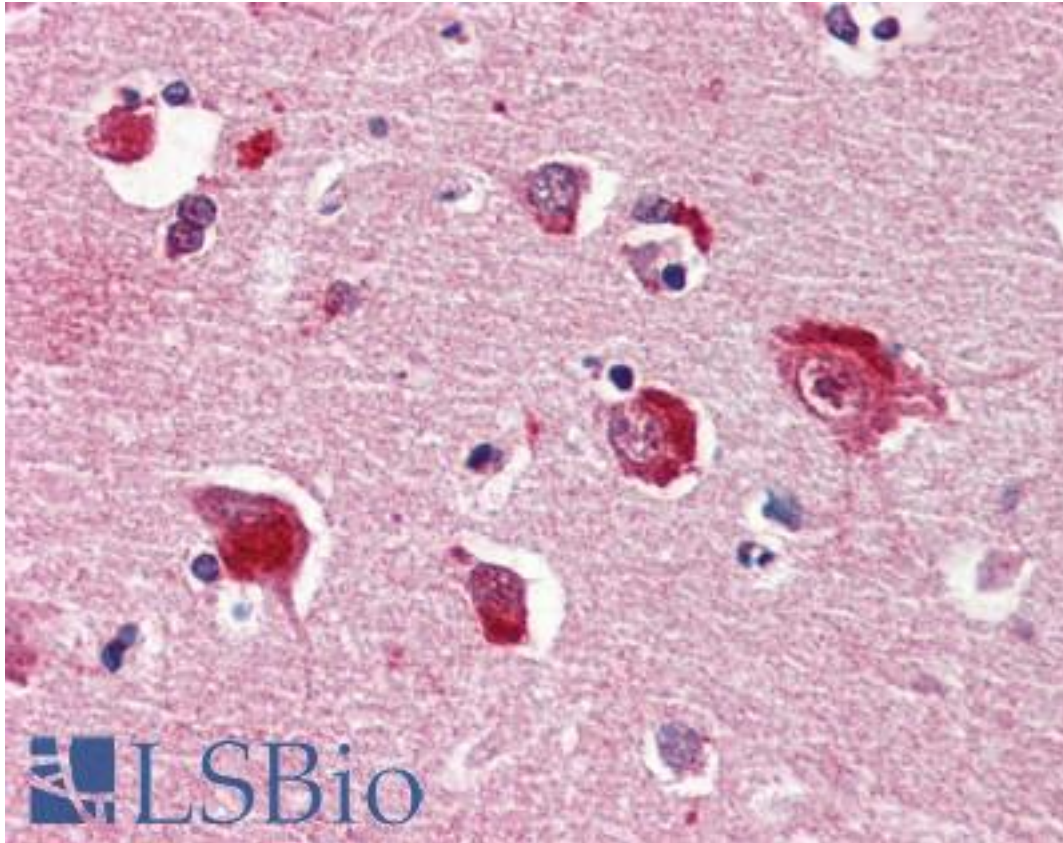
PPP1CA / PP1-Alpha Mouse anti-Human Monoclonal (aa30-299) (4G3) Antibody - LS-B2944 - LSBio	
CatalogID:	LS-B2944
Validation:	This antibody replaces catalog number LS-C93785. It has been validated for use in the following assays: IHC-P.
Target:	protein phosphatase 1, catalytic subunit, alpha isozyme (PPP1CA)
Synonyms:	PPP1CA Antibody, PP-1A Antibody, pp1C alpha Antibody, PP1 alpha Antibody, PP1-Alpha Antibody, PP1alpha Antibody, PPP1A Antibody, Protein phosphatase 1 alpha Antibody
Family / Subfamily:	Protein Phosphatase / PP1
Host	PPP1CA antibody was produced in Mouse
Clonality:	Monoclonal
Isotype:	IgG2a,k
Clone Name:	4G3
Immunogen Species:	PPP1CA / PP1-Alpha antibody was raised against Human
Antigen Type:	Recombinant protein
Immunogen:	PPP1CA / PP1-Alpha antibody was raised against recombinant human PPP1CA (30-299aa) purified from E. coli.
Epitope:	aa30-299
Reactivity:	Human
Purification:	Protein G purified
Presentation:	PBS, pH 7.4, 0.1% sodium azide. Sourced in Ascites.
Recommended Storage:	Long term: -20°C; Short term: +4°C; Avoid freeze-thaw cycles.
Usage Summary:	Immunohistochemistry: LS-B2944 was validated for use in immunohistochemistry on a panel of 21 formalin-fixed, paraffin-embedded (FFPE) human tissues after heat induced antigen retrieval in pH 6.0 citrate buffer. After incubation with the primary antibody, slides were incubated with biotinylated secondary antibody, followed by alkaline phosphatase-streptavidin and chromogen. The stained slides were evaluated by a pathologist to confirm staining specificity. The optimal working concentration for LS-B2944 was determined to be 5 ug/ml.
Uses:	IHC - Paraffin (5 µg/ml), Western blot (1:500 - 1:2000), ELISA (Optimal dilution to be determined by the researcher)
Size:	50 µg
Concentration:	1 mg/ml

Immunohistochemistry Image:



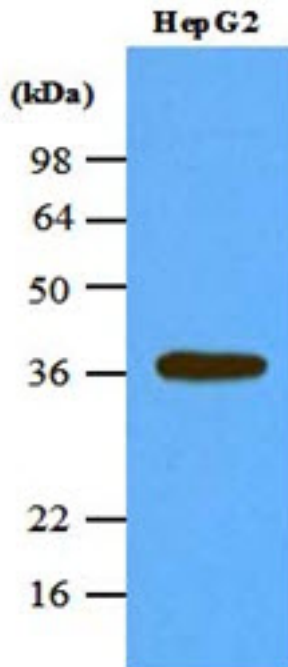
Anti-PPP1CA antibody IHC of human adrenal. Immunohistochemistry of formalin-fixed, paraffin-embedded tissue after heat-induced antigen retrieval. Antibody LS-B2944 concentration 5 ug/ml.

Immunohistochemistry Image:



Anti-PPP1CA antibody IHC of human brain, cortex. Immunohistochemistry of formalin-fixed, paraffin-embedded tissue after heat-induced antigen retrieval. Antibody LS-B2944 concentration 5 ug/ml.

Western Blot Image:



Cell lysates of HepG2 (45 ug) were resolved by SDS-PAGE, transferred to NC membrane and probed with anti-human PPP1CA (1:1000). Proteins were visualized using a goat anti-mouse secondary antibody conjugated to HRP and an ECL detection system.

Requested From:

Japan

Laboratory Reagent For In Vitro Research Use Only

Not for resale without prior written consent from LifeSpan BioSciences, Inc.

Created on 9/23/2014

© 2014 LifeSpan BioSciences