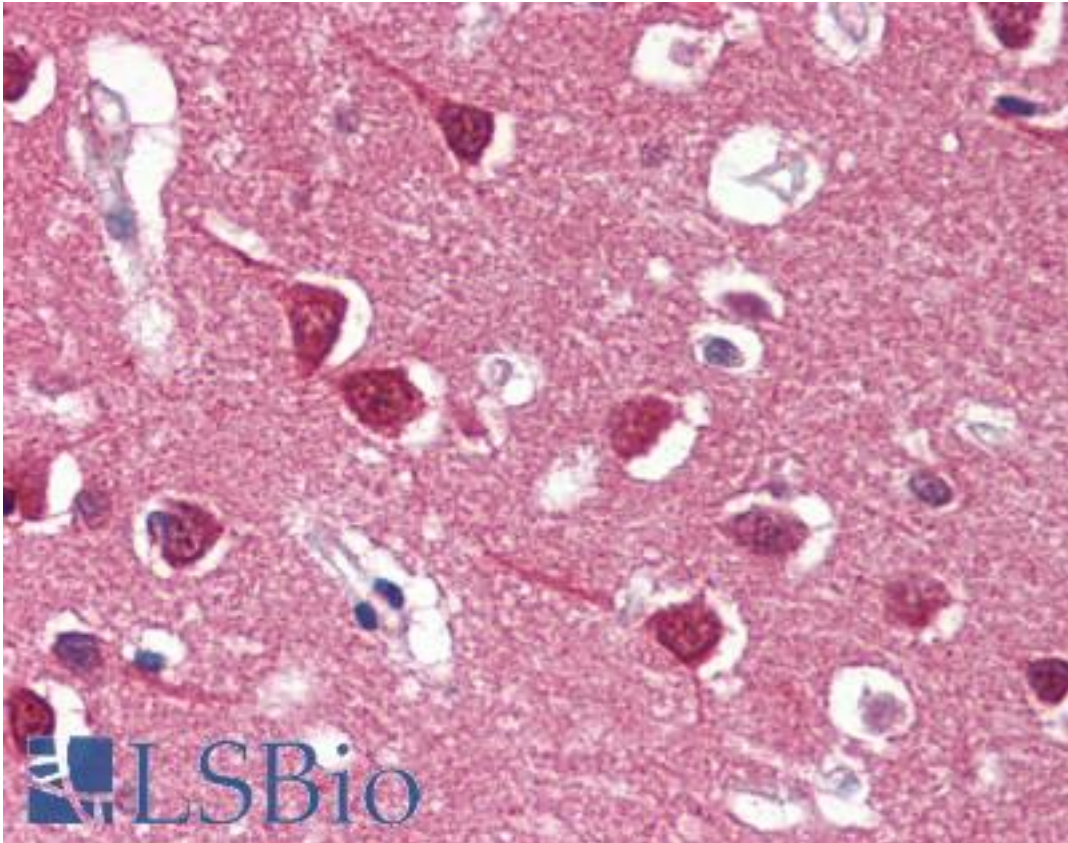


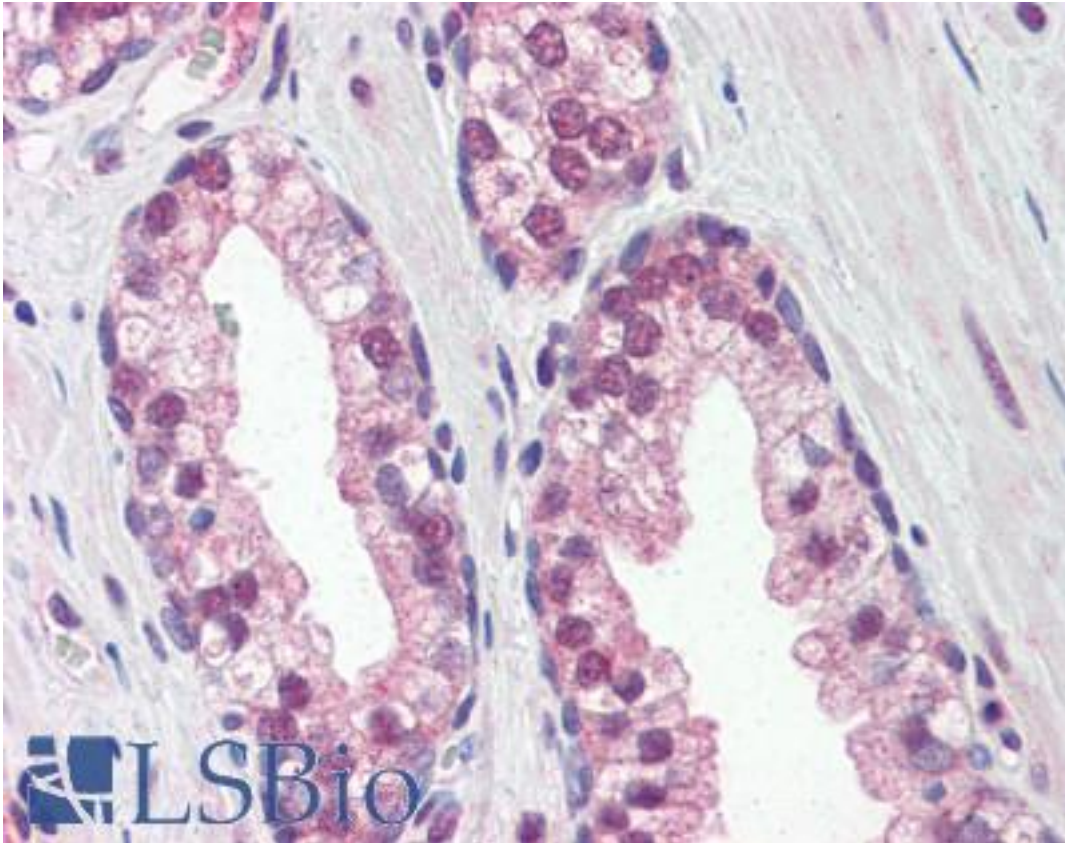
REXO1 / REX1 Mouse anti-Human Monoclonal (aa1060-1221) (4H5) Antibody - LS-B2942 - LSBio	
CatalogID:	LS-B2942
Validation:	This antibody replaces catalog number LS-C93792. It has been validated for use in the following assays: IHC-P.
Target:	REX1, RNA exonuclease 1 homolog (<i>S. cerevisiae</i>) (REXO1)
Synonyms:	REXO1 Antibody, ELOABP1 Antibody, Elongin A-binding protein 1 Antibody, Elongin-A-binding protein 1 Antibody, KIAA1138 Antibody, REX1 Antibody, RNA exonuclease 1 homolog Antibody, TCEB3BP1 Antibody, EloA-BP1 Antibody, Elongin A binding protein 1 Antibody
Host	REXO1 antibody was produced in Mouse
Clonality:	Monoclonal
Isotype:	IgG2b,k
Clone Name:	4H5
Immunogen Species:	REXO1 / REX1 antibody was raised against Human
Antigen Type:	Recombinant protein
Immunogen:	REXO1 / REX1 antibody was raised against recombinant human REXO1 (1060-1221aa) purified from <i>E. coli</i> .
Epitope:	aa1060-1221
Reactivity:	Human
Purification:	Protein G purified
Presentation:	PBS, pH 7.4, 0.1% sodium azide
Recommended Storage:	Long term: -20°C; Short term: +4°C; Avoid freeze-thaw cycles.
Usage Summary:	Immunohistochemistry: LS-B2942 was validated for use in immunohistochemistry on a panel of 21 formalin-fixed, paraffin-embedded (FFPE) human tissues after heat induced antigen retrieval in pH 6.0 citrate buffer. After incubation with the primary antibody, slides were incubated with biotinylated secondary antibody, followed by alkaline phosphatase-streptavidin and chromogen. The stained slides were evaluated by a pathologist to confirm staining specificity. The optimal working concentration for LS-B2942 was determined to be 5 ug/ml.
Uses:	IHC - Paraffin (5 µg/ml), Western blot (1:1000 - 1:2000), ELISA (Optimal dilution to be determined by the researcher)
Size:	50 µg

Immunohistochemistry Image:



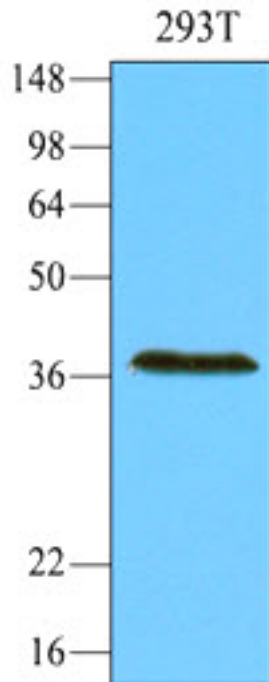
Anti-REXO1 antibody IHC of human brain, cortex. Immunohistochemistry of formalin-fixed, paraffin-embedded tissue after heat-induced antigen retrieval. Antibody LS-B2942 concentration 5 ug/ml.

Immunohistochemistry Image:



Anti-REXO1 antibody IHC of human prostate. Immunohistochemistry of formalin-fixed, paraffin-embedded tissue after heat-induced antigen retrieval. Antibody LS-B2942 concentration 5 ug/ml.

Western Blot Image:



Cell lysates of 293T (30 ug) were resolved by SDS-PAGE, transferred to NC membrane and probed with anti-human REXO1 (1:1000). Proteins were visualized using a goat anti-mouse secondary antibody conjugated to HRP and an ECL detection system.

Requested From:

Japan

Laboratory Reagent For In Vitro Research Use Only

Not for resale without prior written consent from LifeSpan BioSciences, Inc.

Created on 9/23/2014

© 2014 LifeSpan BioSciences