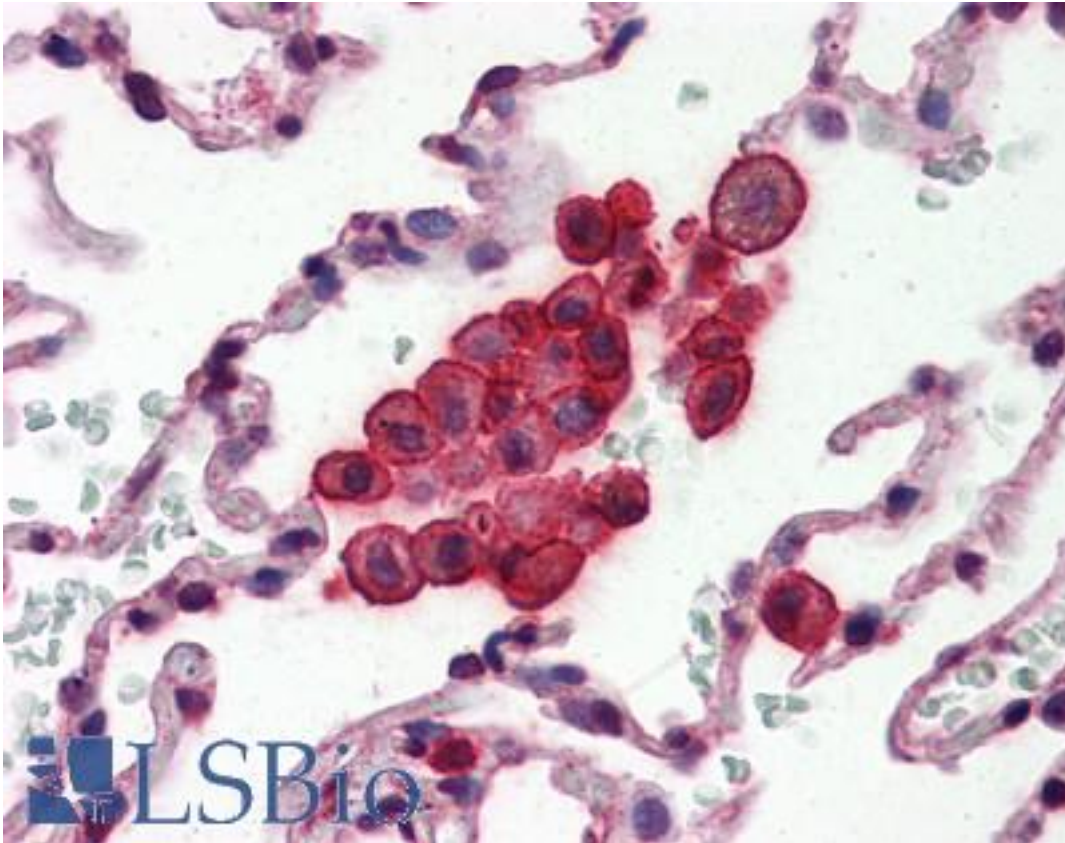


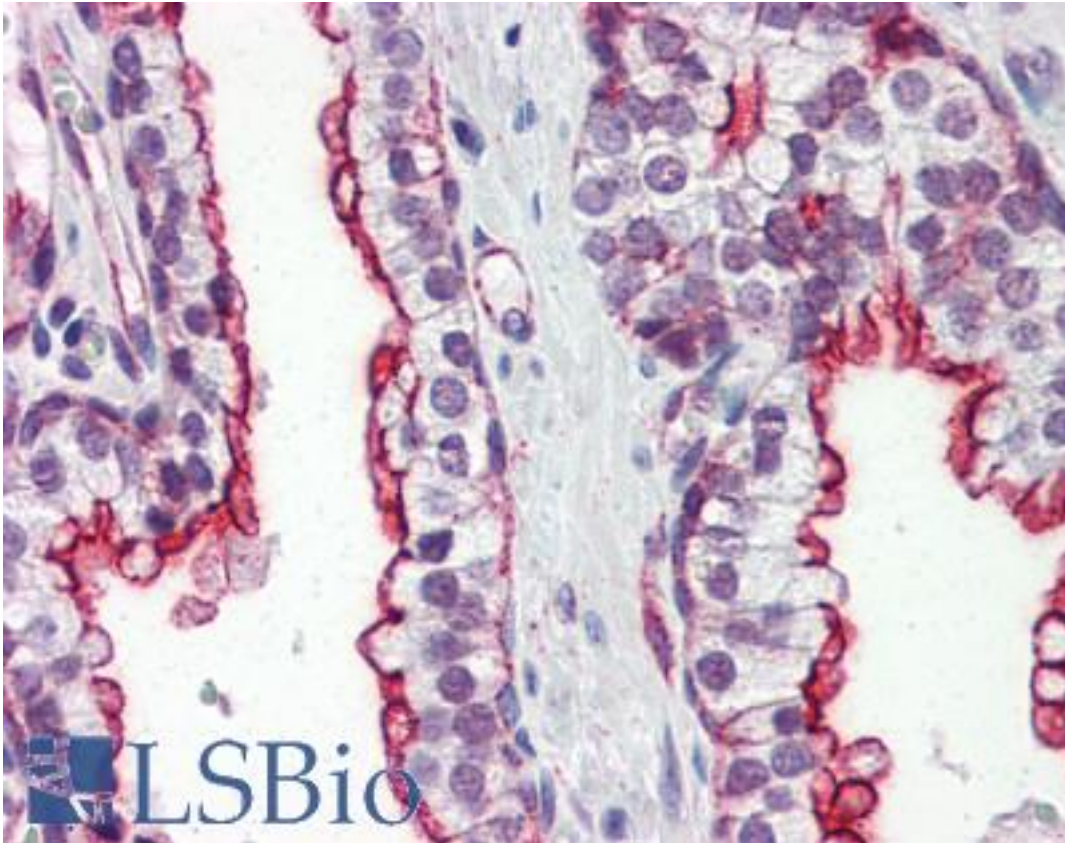
CLU / Clusterin Mouse anti-Human Monoclonal (aa1-333) (1A11) Antibody - LS-B2937 - LSBio	
CatalogID:	LS-B2937
Validation:	This antibody replaces catalog number LS-C93726. It has been validated for use in the following assays: IHC-P.
Target:	clusterin
Synonyms:	CLU Antibody, APO-J Antibody, Apolipoprotein J Antibody, CLU1 Antibody, Clusterin Antibody, Complement lysis inhibitor Antibody, CLI Antibody, AAG4 Antibody, Aging-associated protein 4 Antibody, Ku70-binding protein 1 Antibody, KUB1 Antibody, SGP2 Antibody, APOJ Antibody, SGP-2 Antibody, Sulfated glycoprotein 2 Antibody, CLU2 Antibody, Complement cytolysis inhibitor Antibody, NA1/NA2 Antibody, SP-40 Antibody
Host	CLU antibody was produced in Mouse
Clonality:	Monoclonal
Isotype:	IgG1,k
Clone Name:	1A11
Immunogen Species:	CLU / Clusterin antibody was raised against Human
Antigen Type:	Recombinant protein
Immunogen:	CLU / Clusterin antibody was raised against recombinant human Clusterin (1-333aa) purified from E. coli.
Epitope:	aa1-333
Reactivity:	Human
Purification:	Protein G purified
Presentation:	PBS, pH 7.4, 0.1% sodium azide
Recommended Storage:	Long term: -20°C; Short term: +4°C; Avoid freeze-thaw cycles.
Usage Summary:	Immunohistochemistry: LS-B2937 was validated for use in immunohistochemistry on a panel of 21 formalin-fixed, paraffin-embedded (FFPE) human tissues after heat induced antigen retrieval in pH 6.0 citrate buffer. After incubation with the primary antibody, slides were incubated with biotinylated secondary antibody, followed by alkaline phosphatase-streptavidin and chromogen. The stained slides were evaluated by a pathologist to confirm staining specificity. The optimal working concentration for LS-B2937 was determined to be 10 ug/ml.
Uses:	IHC - Paraffin (10 µg/ml), Western blot (1:1000 - 1:2000), ELISA (Optimal dilution to be determined by the researcher)
Size:	50 µg
Concentration:	1 mg/ml

Immunohistochemistry Image:



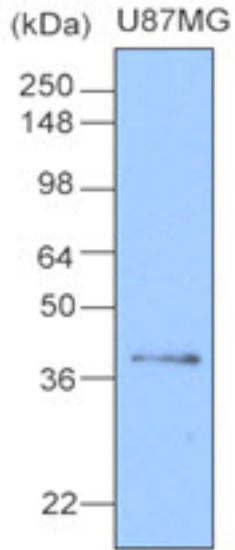
Anti-Clusterin antibody IHC of human lung. Immunohistochemistry of formalin-fixed, paraffin-embedded tissue after heat-induced antigen retrieval. Antibody LS-B2937 concentration 10 ug/ml.

Immunohistochemistry Image:



Anti-Clusterin antibody IHC of human prostate. Immunohistochemistry of formalin-fixed, paraffin-embedded tissue after heat-induced antigen retrieval. Antibody LS-B2937 concentration 10 ug/ml.

Western Blot Image:



Cell lysates of U87 MG(20 ug) were resolved by SDS-PAGE, transferred to NC membrane and probed with anti-human Clusterin (1:1000). Proteins were visualized using a goat anti-mouse secondary antibody conjugated to HRP and aN ECL detection system.

Requested From:

Japan

Laboratory Reagent For In Vitro Research Use Only

Not for resale without prior written consent from LifeSpan BioSciences, Inc.

Created on 9/23/2014

© 2014 LifeSpan BioSciences