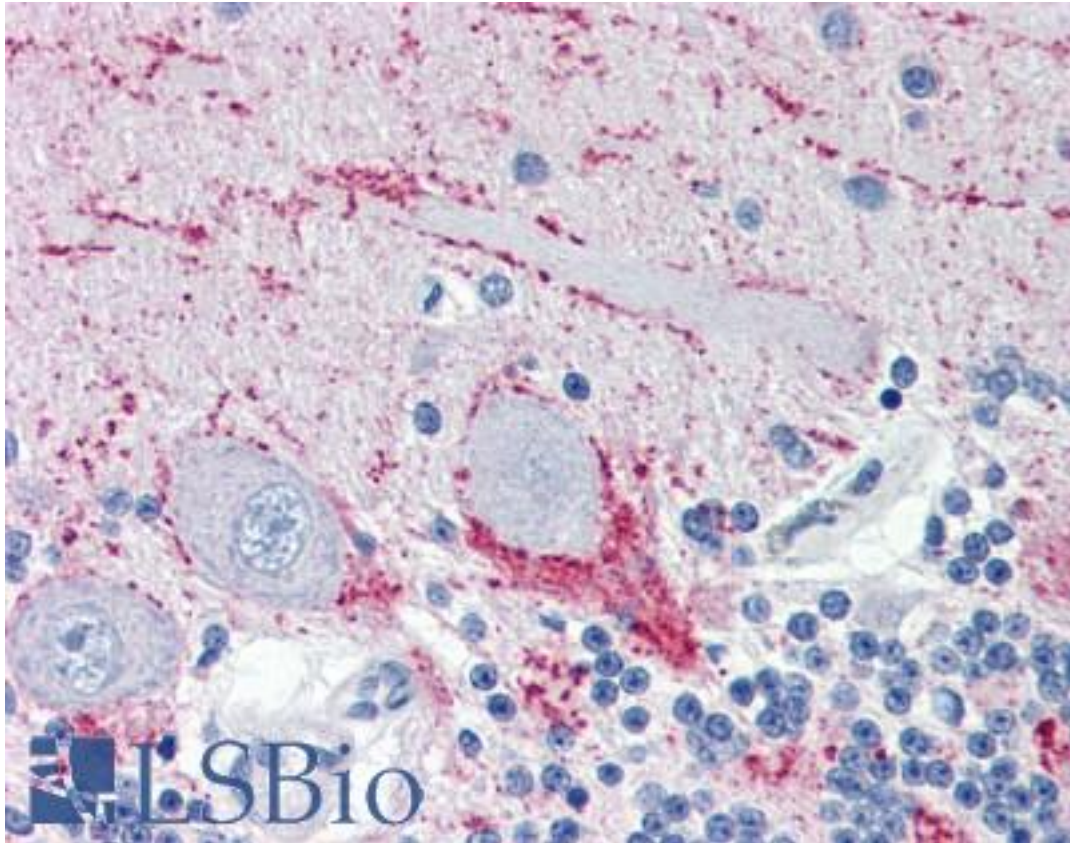


VAMP2 / VAMP-2 Mouse anti-Human Monoclonal (aa1-89) (3E5) Antibody - LS-B2936 - LSBio

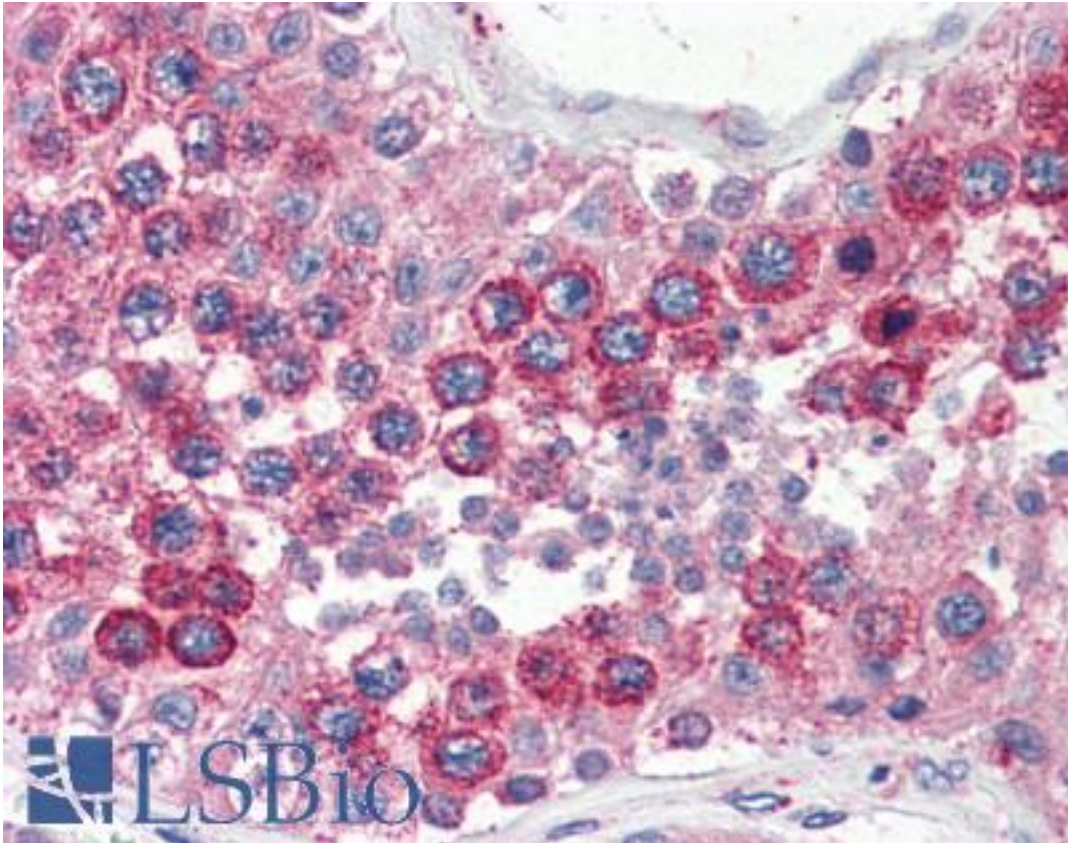
<b>CatalogID:</b>	LS-B2936
<b>Validation:</b>	This antibody replaces catalog number LS-C93814. It has been validated for use in the following assays: IHC-P.
<b>Target:</b>	vesicle-associated membrane protein 2 (synaptobrevin 2) (VAMP2)
<b>Synonyms:</b>	VAMP2 Antibody, SYB2 Antibody, Synaptobrevin 2 Antibody, VAMP-2 Antibody, Synaptobrevin-2 Antibody
<b>Family / Subfamily:</b>	Synaptobrevin
<b>Host</b>	VAMP2 antibody was produced in Mouse
<b>Clonality:</b>	Monoclonal
<b>Isotype:</b>	IgG1,k
<b>Clone Name:</b>	3E5
<b>Immunogen Species:</b>	VAMP2 / VAMP-2 antibody was raised against Human
<b>Antigen Type:</b>	Recombinant protein
<b>Immunogen:</b>	VAMP2 / VAMP-2 antibody was raised against recombinant human Synaptobrevin 2 (1-89aa) purified from E. coli.
<b>Epitope:</b>	aa1-89
<b>Reactivity:</b>	Human
<b>Purification:</b>	Protein G purified
<b>Presentation:</b>	PBS, pH 7.4, 0.1% sodium azide. Sourced in Ascites.
<b>Recommended Storage:</b>	Long term: -20°C; Short term: +4°C; Avoid freeze-thaw cycles.
<b>Usage Summary:</b>	Immunohistochemistry: LS-B2936 was validated for use in immunohistochemistry on a panel of 21 formalin-fixed, paraffin-embedded (FFPE) human tissues after heat induced antigen retrieval in pH 6.0 citrate buffer. After incubation with the primary antibody, slides were incubated with biotinylated secondary antibody, followed by alkaline phosphatase-streptavidin and chromogen. The stained slides were evaluated by a pathologist to confirm staining specificity. The optimal working concentration for LS-B2936 was determined to be 10 ug/ml.
<b>Uses:</b>	IHC - Paraffin (10 µg/ml), Western blot (1:2000 - 1:3000), ELISA (Optimal dilution to be determined by the researcher)
<b>Size:</b>	50 µg
<b>Concentration:</b>	1 mg/ml

**Immunohistochemistry Image:**



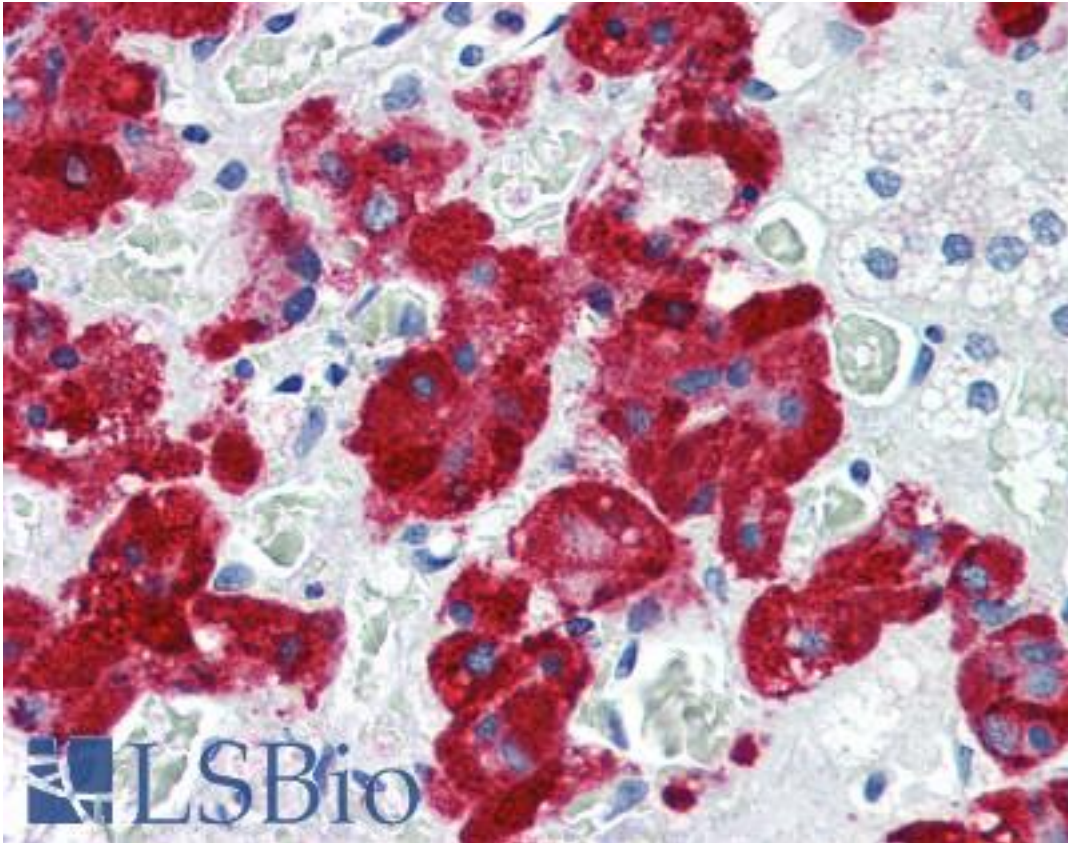
Anti-VAMP2 antibody IHC of human brain, cerebellum. Immunohistochemistry of formalin-fixed, paraffin-embedded tissue after heat-induced antigen retrieval. Antibody LS-B2936 concentration 10 ug/ml.

**Immunohistochemistry Image:**



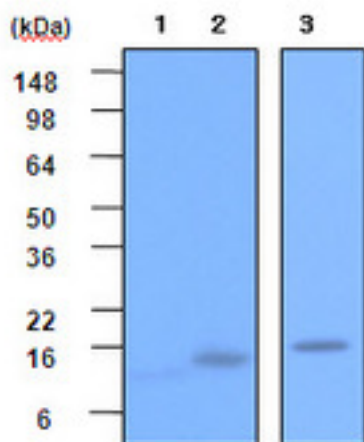
Anti-VAMP2 antibody IHC of human testis. Immunohistochemistry of formalin-fixed, paraffin-embedded tissue after heat-induced antigen retrieval. Antibody LS-B2936 concentration 10 ug/ml.

**Immunohistochemistry Image:**



Anti-VAMP2 antibody IHC of human adrenal. Immunohistochemistry of formalin-fixed, paraffin-embedded tissue after heat-induced antigen retrieval. Antibody LS-B2936 concentration 10 ug/ml.

**Western Blot Image:**



Lane 1: Synaptobrevin 1

Lane 2: Synaptobrevin 2

Lane 3: Rat brain

<b>Requested From:</b>	Japan
Laboratory Reagent For In Vitro Research Use Only	
Not for resale without prior written consent from LifeSpan BioSciences, Inc.	
Created on 9/23/2014	
© 2014 LifeSpan BioSciences	