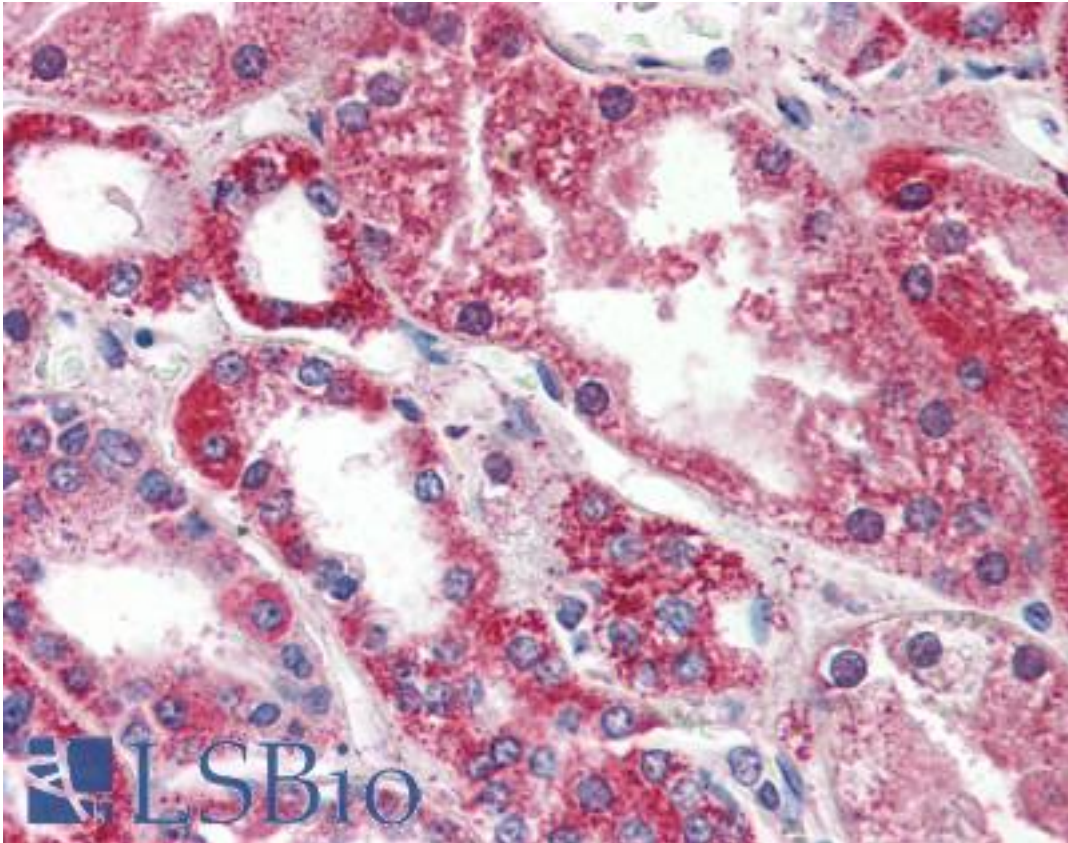


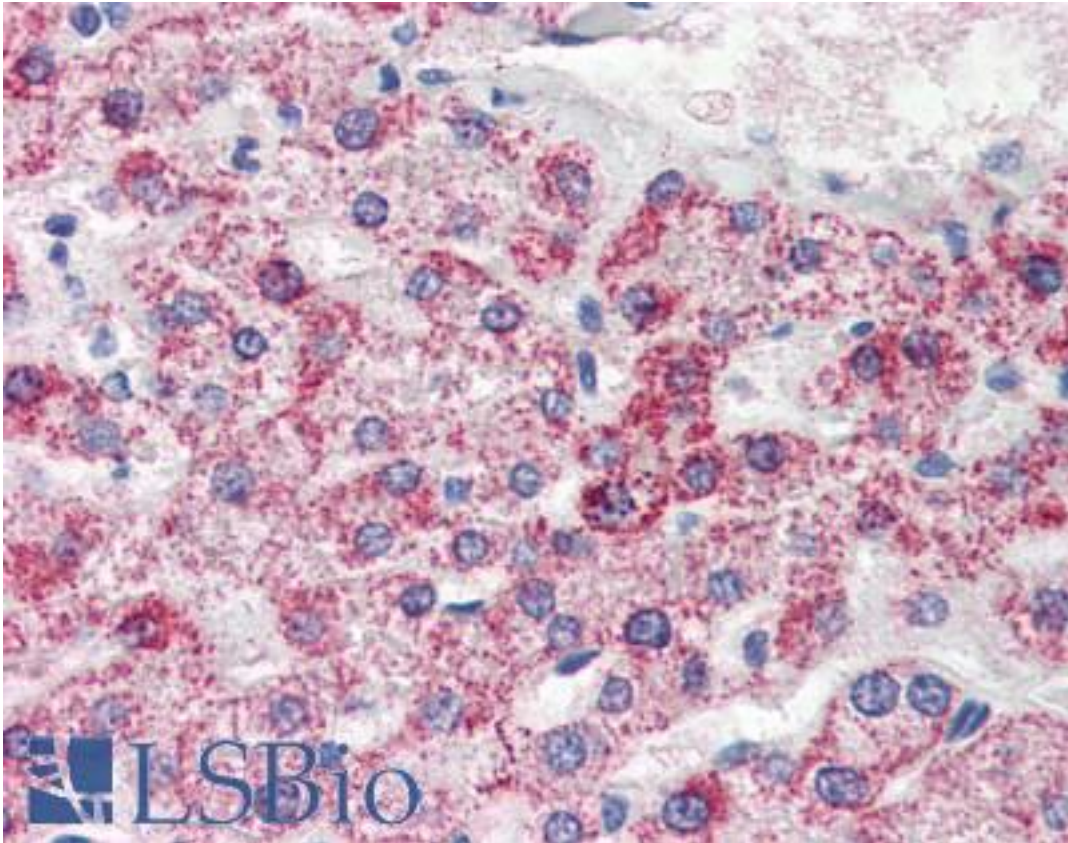
PSPH / PSP Mouse anti-Human Monoclonal (aa1-225) (3G12) Antibody - LS-B2935 - LSBio	
CatalogID:	LS-B2935
Validation:	This antibody replaces catalog number LS-C93744. It has been validated for use in the following assays: IHC-P.
Target:	phosphoserine phosphatase (PSPH)
Synonyms:	PSPH Antibody, L-3-phosphoserine phosphatase Antibody, Phosphoserine phosphatase Antibody, PSPase Antibody, PSP Antibody, PSPHD Antibody
Host	PSPH antibody was produced in Mouse
Clonality:	Monoclonal
Isotype:	IgG1,k
Clone Name:	3G12
Immunogen Species:	PSPH / PSP antibody was raised against Human
Antigen Type:	Recombinant protein
Immunogen:	PSPH / PSP antibody was raised against recombinant human PSP (1-225aa) purified from E. coli.
Epitope:	aa1-225
Reactivity:	Human, Mouse
Purification:	Protein G purified
Presentation:	PBS, pH 7.4, 0.1% sodium azide. Sourced in Ascites.
Recommended Storage:	Long term: -20°C; Short term: +4°C; Avoid freeze-thaw cycles.
Usage Summary:	Immunohistochemistry: LS-B2935 was validated for use in immunohistochemistry on a panel of 21 formalin-fixed, paraffin-embedded (FFPE) human tissues after heat induced antigen retrieval in pH 6.0 citrate buffer. After incubation with the primary antibody, slides were incubated with biotinylated secondary antibody, followed by alkaline phosphatase-streptavidin and chromogen. The stained slides were evaluated by a pathologist to confirm staining specificity. The optimal working concentration for LS-B2935 was determined to be 10 ug/ml.
Uses:	IHC - Paraffin (10 µg/ml), Western blot (1:1000 - 1:2000), ELISA (Optimal dilution to be determined by the researcher)
Size:	50 µg
Concentration:	1 mg/ml

Immunohistochemistry Image:



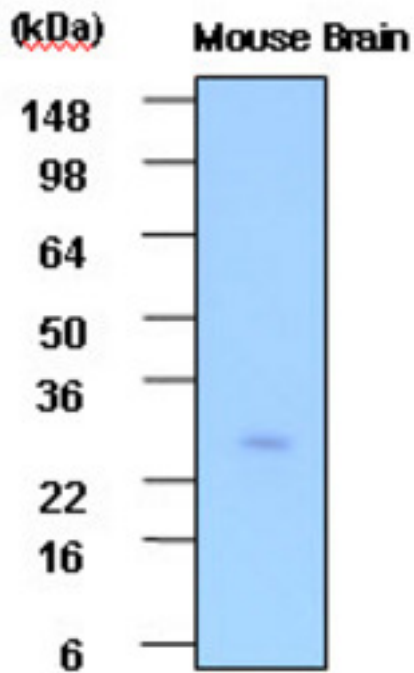
Anti-PSPH antibody IHC of human kidney. Immunohistochemistry of formalin-fixed, paraffin-embedded tissue after heat-induced antigen retrieval. Antibody LS-B2935 concentration 10 ug/ml.

Immunohistochemistry Image:



Anti-PSPH antibody IHC of human liver. Immunohistochemistry of formalin-fixed, paraffin-embedded tissue after heat-induced antigen retrieval. Antibody LS-B2935 concentration 10 ug/ml.

Western Blot Image:



Cell lysates of Mouse brain (30 ug) were resolved by SDS-PAGE, transferred to PVDF membrane and probed with anti-human PSP (1:1000). Proteins were visualized using a goat anti-mouse secondary antibody conjugated to HRP and an ECL detection system.

Requested From:

Japan

Laboratory Reagent For In Vitro Research Use Only

Not for resale without prior written consent from LifeSpan BioSciences, Inc.

Created on 9/23/2014

© 2014 LifeSpan BioSciences