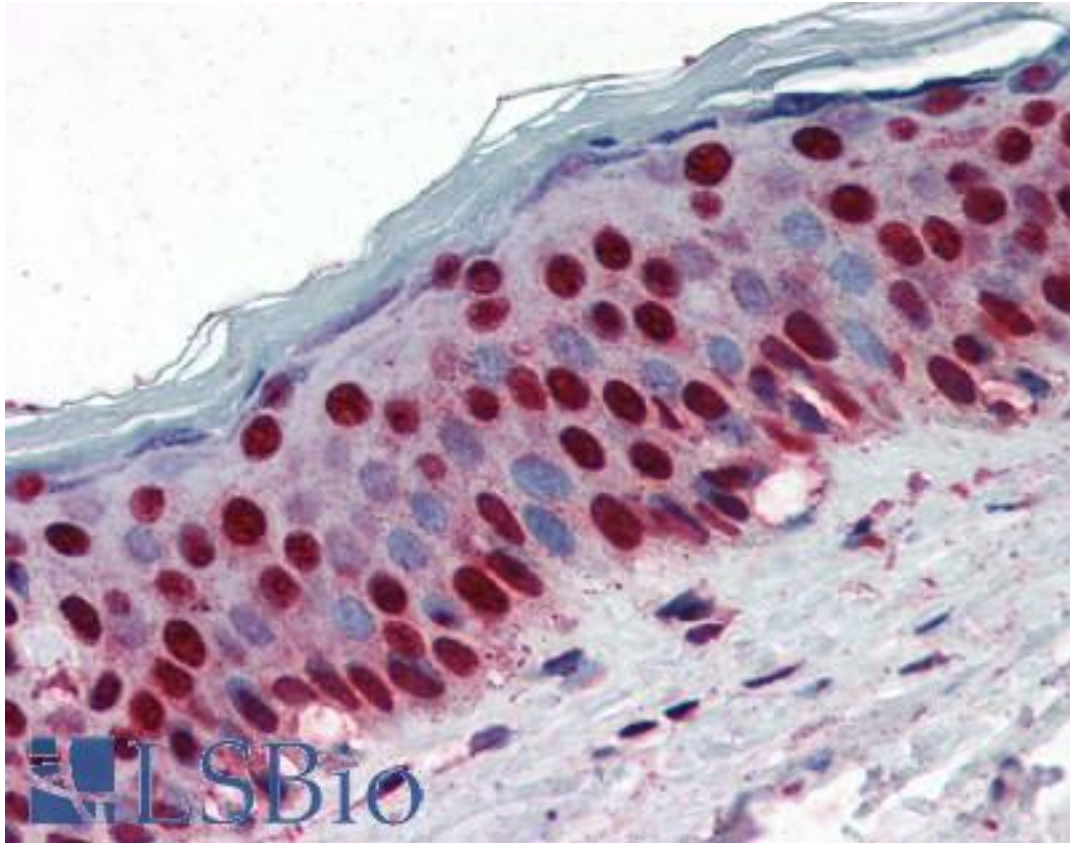


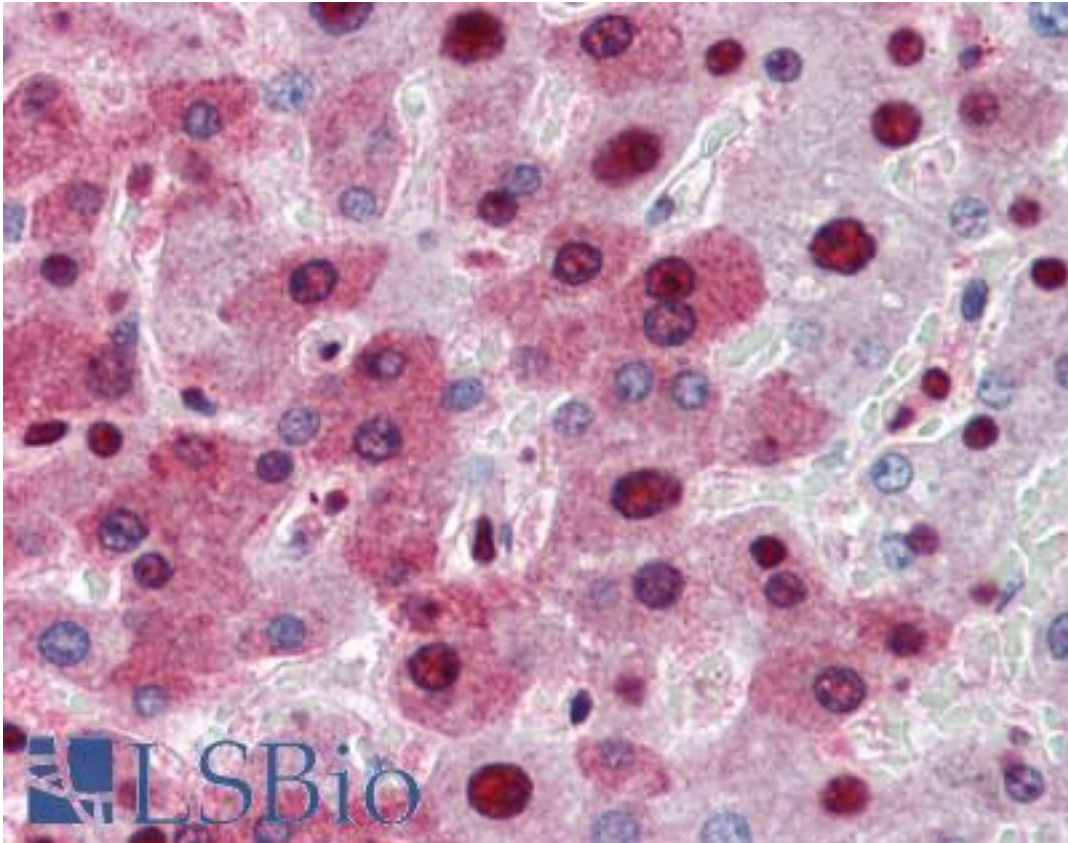
NPM1 / NPM / Nucleophosmin Mouse anti-Human Monoclonal (aa81-294) (5E3) Antibody - LS-B2930 - LSBio	
CatalogID:	LS-B2930
Validation:	This antibody replaces catalog number LS-C93771. It has been validated for use in the following assays: IHC-P.
Target:	nucleophosmin (nucleolar phosphoprotein B23, numatrin) (NPM1)
Synonyms:	NPM1 Antibody, NPM Antibody, Nucleolar phosphoprotein B23 Antibody, Nucleolar protein NO38 Antibody, Numatrin Antibody, B23 Antibody, Nucleophosmin Antibody
Host	NPM1 antibody was produced in Mouse
Clonality:	Monoclonal
Isotype:	IgG2b,k
Clone Name:	5E3
Immunogen Species:	NPM1 / NPM / Nucleophosmin antibody was raised against Human
Antigen Type:	Recombinant protein
Immunogen:	NPM1 / NPM / Nucleophosmin antibody was raised against recombinant human NPM (81-294aa) purified from E. coli.
Epitope:	aa81-294
Reactivity:	Human
Purification:	Protein G purified
Presentation:	PBS, pH 7.4, 0.1% sodium azide
Recommended Storage:	Long term: -20°C; Short term: +4°C; Avoid freeze-thaw cycles.
Usage Summary:	Immunohistochemistry: LS-B2930 was validated for use in immunohistochemistry on a panel of 21 formalin-fixed, paraffin-embedded (FFPE) human tissues after heat induced antigen retrieval in pH 6.0 citrate buffer. After incubation with the primary antibody, slides were incubated with biotinylated secondary antibody, followed by alkaline phosphatase-streptavidin and chromogen. The stained slides were evaluated by a pathologist to confirm staining specificity. The optimal working concentration for LS-B2930 was determined to be 5 ug/ml.
Uses:	IHC - Paraffin (5 µg/ml), Western blot, ELISA (Optimal dilution to be determined by the researcher)
Size:	50 µg
Concentration:	1 mg/ml

Immunohistochemistry Image:



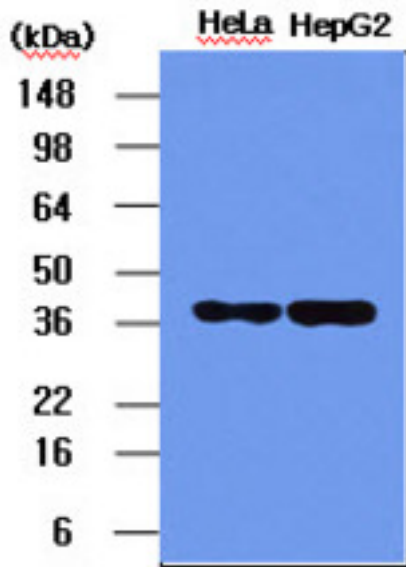
Anti-NPM1 antibody IHC of human skin. Immunohistochemistry of formalin-fixed, paraffin-embedded tissue after heat-induced antigen retrieval. Antibody LS-B2930 concentration 5 ug/ml.

Immunohistochemistry Image:



Anti-NPM1 antibody IHC of human liver. Immunohistochemistry of formalin-fixed, paraffin-embedded tissue after heat-induced antigen retrieval. Antibody LS-B2930 concentration 5 ug/ml.

Western Blot Image:



The HeLa and HepG2 cell lysates (5 ug) were resolved by SDS-PAGE, transferred to PVDF membrane and probed with anti-human NPM (1:1000). Proteins were visualized using a goat anti-mouse secondary antibody conjugated to HRP and an ECL detection system.

Requested From:

Japan

Laboratory Reagent For In Vitro Research Use Only

Not for resale without prior written consent from LifeSpan BioSciences, Inc.

Created on 9/23/2014

© 2014 LifeSpan BioSciences