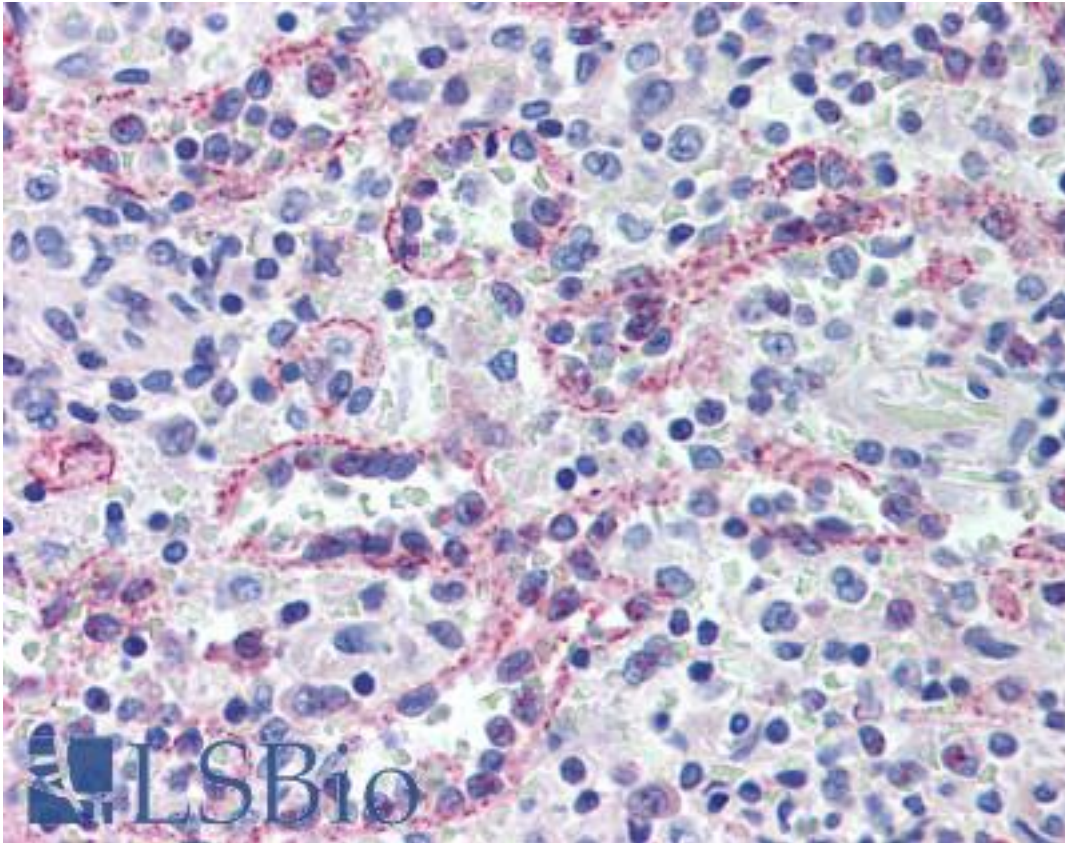


SPECC1 / CYTSB Rabbit anti-Human Polyclonal (aa200-300) Antibody - LS-B293 - LSBio	
CatalogID:	LS-B293
Validation:	This antibody replaces catalog number LS-C2822. It has been validated for use in the following assays: IHC.
Target:	sperm antigen with calponin homology and coiled-coil domains 1 (SPECC1)
Synonyms:	SPECC1 Antibody, CYTSB Antibody, Cytospin-B Antibody, HCMOGT-1 Antibody, Structure protein NSP5a3b Antibody, Structure protein NSP5b3a Antibody, Structure protein NSP5b3b Antibody, Structure protein NSP5a3a Antibody, HCMOGT1 Antibody, NSP Antibody, NSP5 Antibody, Nuclear structure protein 5 Antibody, Sperm antigen HCMOGT-1 Antibody
Host	SPECC1 antibody was produced in Rabbit
Clonality:	Polyclonal
Immunogen Species:	SPECC1 / CYTSB antibody was raised against Human
Antigen Type:	Synthetic peptide
Immunogen:	SPECC1 / CYTSB antibody was raised against an internal synthetic peptide made to the human NSP5a3a protein sequence (between residues 200-300). Percent identity by BLAST analysis: Mouse (93%); Rat (87%).
Specificity:	NSP5a3a.
Epitope:	aa200-300
Reactivity:	Human
Predicted Reactivity:	Mouse
Purification:	Immunoaffinity purified
Presentation:	Rabbit antisera
Recommended Storage:	Long term: -20°C; Short term: +4°C. Avoid repeat freeze-thaw cycles.
Usage Summary:	Immunohistochemistry: LS-B293 was validated for use in immunohistochemistry on a panel of 21 formalin-fixed, paraffin-embedded (FFPE) human tissues after heat induced antigen retrieval in pH 6.0 citrate buffer. After incubation with the primary antibody, slides were incubated with biotinylated secondary antibody, followed by alkaline phosphatase-streptavidin and chromogen. The stained slides were evaluated by a pathologist to confirm staining specificity. The optimal working concentration for LS-B293 was determined to be 10 ug/ml.
Uses:	IHC - Paraffin (10 µg/ml), Western blot (1:500 - 1:2000) (Optimal dilution to be determined by the researcher)
Size:	50 µl
Concentration:	1 mg/ml

Immunohistochemistry Image:



Anti-SPECC1 / CYTSB antibody IHC of human spleen. Immunohistochemistry of formalin-fixed, paraffin-embedded tissue after heat-induced antigen retrieval. Antibody LS-B293 concentration 10 ug/ml.

Requested From:

Japan

Laboratory Reagent For In Vitro Research Use Only

Not for resale without prior written consent from LifeSpan BioSciences, Inc.

Created on 9/23/2014

© 2014 LifeSpan BioSciences