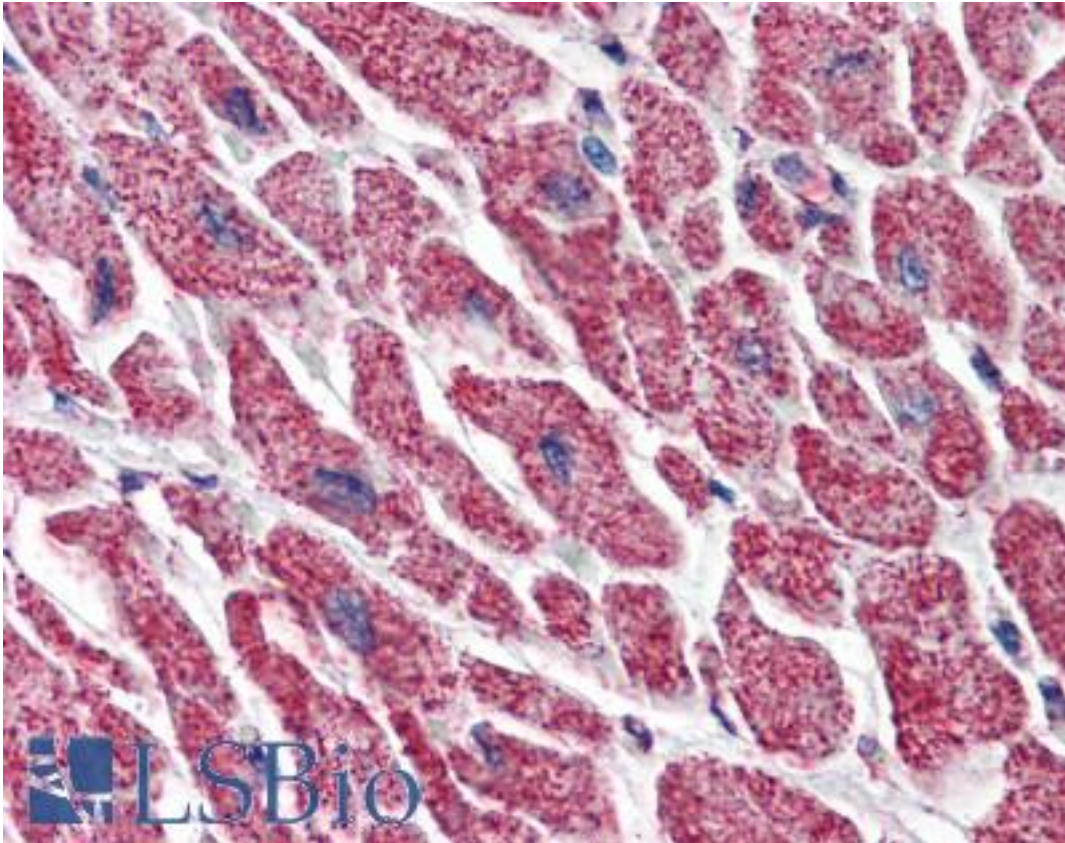


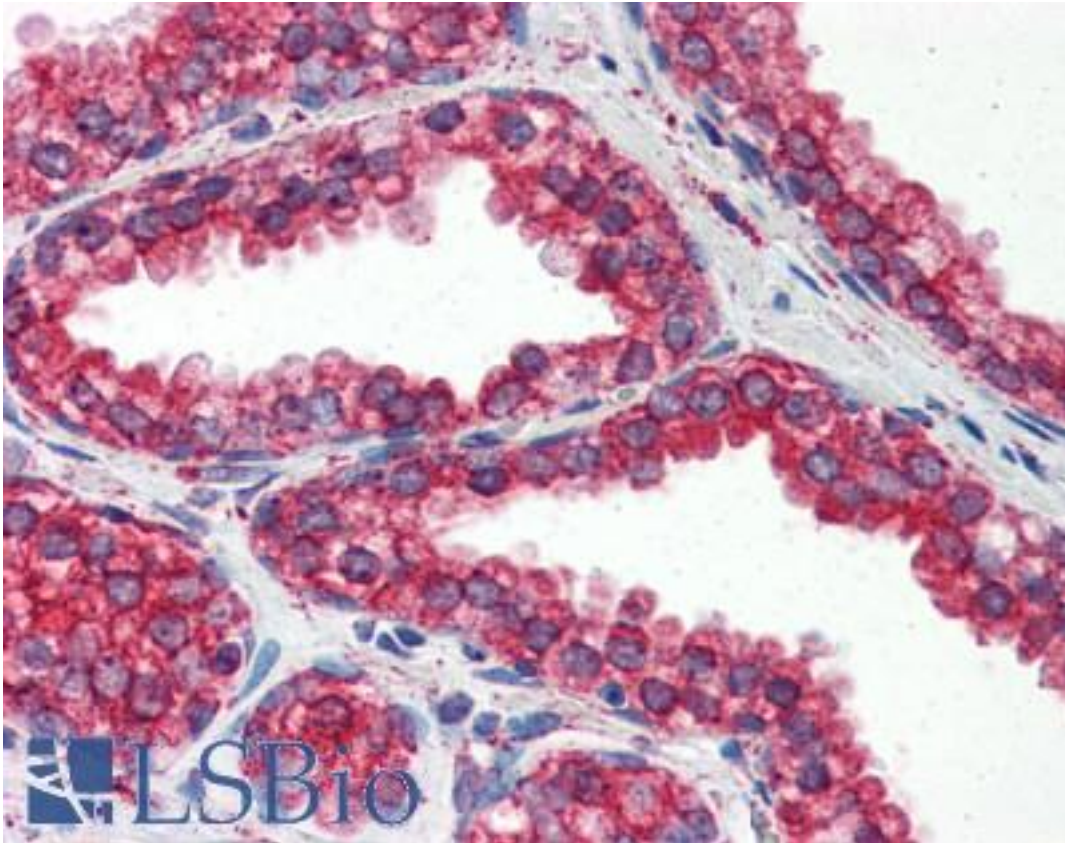
HSP90B1 / GP96 / GRP94 Mouse anti-Human Monoclonal (aa676-803) (2H3) Antibody - LS-B2929 - LSBio	
CatalogID:	LS-B2929
Validation:	This antibody replaces catalog number LS-C93799. It has been validated for use in the following assays: IHC-P.
Target:	heat shock protein 90kDa beta (Grp94), member 1 (HSP90B1)
Synonyms:	HSP90B1 Antibody, ECGP Antibody, Endoplasmic Antibody, gp96 homolog Antibody, gp96 Antibody, GRP-94 Antibody, GRP94 Antibody, Tumor rejection antigen 1 Antibody, TRA1 Antibody
Host	HSP90B1 antibody was produced in Mouse
Clonality:	Monoclonal
Isotype:	IgG2a,k
Clone Name:	2H3
Immunogen Species:	HSP90B1 / GP96 / GRP94 antibody was raised against Human
Antigen Type:	Recombinant protein
Immunogen:	HSP90B1 / GP96 / GRP94 antibody was raised against recombinant human TRA1 (676-803aa) purified from E. coli.
Epitope:	aa676-803
Reactivity:	Human
Purification:	Protein G purified
Presentation:	PBS, pH 7.4, 0.1% sodium azide
Recommended Storage:	Long term: -20°C; Short term: +4°C; Avoid freeze-thaw cycles.
Usage Summary:	Immunohistochemistry: LS-B2929 was validated for use in immunohistochemistry on a panel of 21 formalin-fixed, paraffin-embedded (FFPE) human tissues after heat induced antigen retrieval in pH 6.0 citrate buffer. After incubation with the primary antibody, slides were incubated with biotinylated secondary antibody, followed by alkaline phosphatase-streptavidin and chromogen. The stained slides were evaluated by a pathologist to confirm staining specificity. The optimal working concentration for LS-B2929 was determined to be 5 ug/ml.
Uses:	IHC - Paraffin (5 µg/ml), Immunofluorescence (1:100 - 1:200), Western blot, ELISA (Optimal dilution to be determined by the researcher)
Size:	50 µg
Concentration:	1 mg/ml

Immunohistochemistry Image:



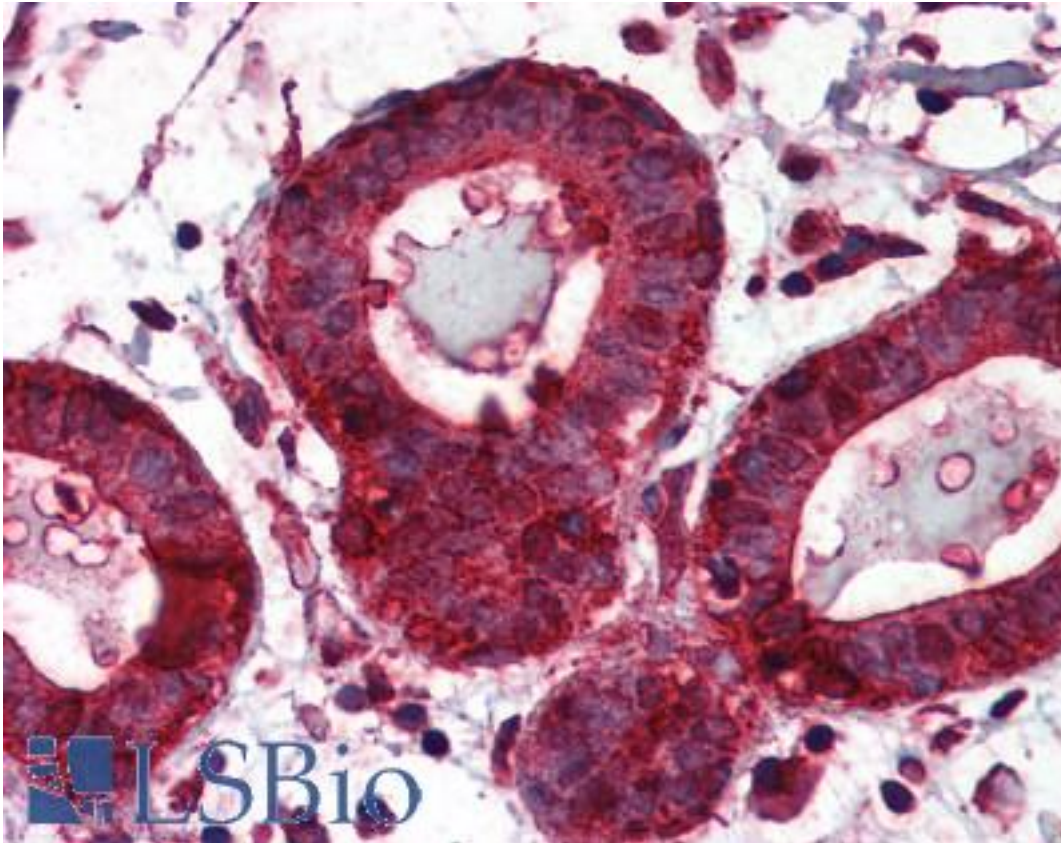
Anti-HSP90B1 / GRP94 antibody IHC of human heart. Immunohistochemistry of formalin-fixed, paraffin-embedded tissue after heat-induced antigen retrieval. Antibody LS-B2929 concentration 5 ug/ml.

Immunohistochemistry Image:



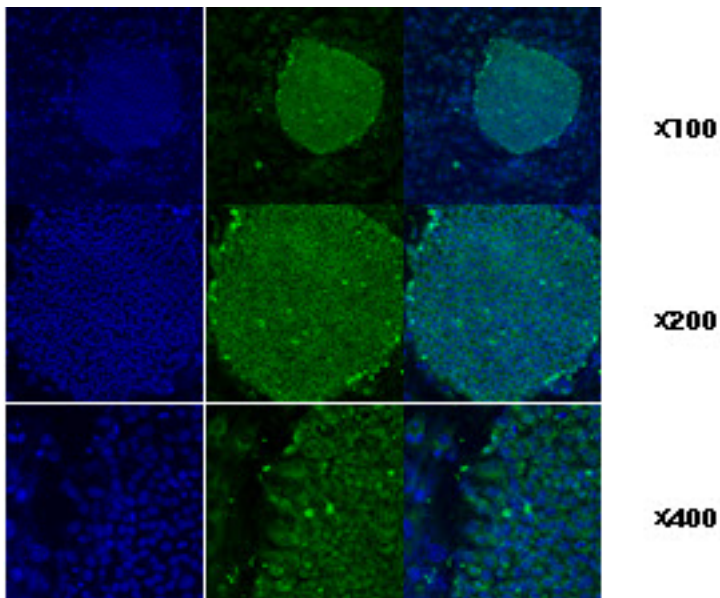
Anti-HSP90B1 / GRP94 antibody IHC of human prostate. Immunohistochemistry of formalin-fixed, paraffin-embedded tissue after heat-induced antigen retrieval. Antibody LS-B2929 concentration 5 ug/ml.

Immunohistochemistry Image:



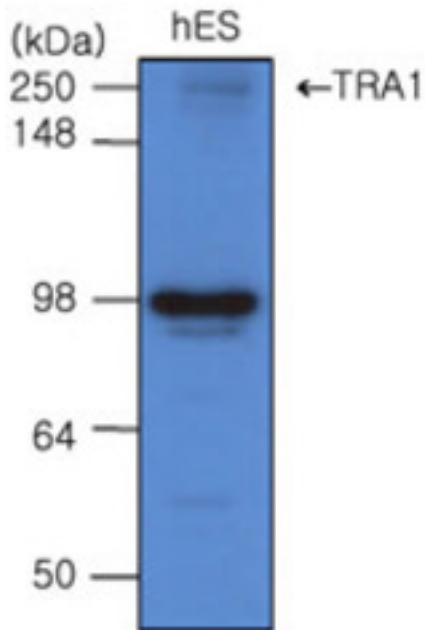
Anti-HSP90B1 / GRP94 antibody IHC of human breast. Immunohistochemistry of formalin-fixed, paraffin-embedded tissue after heat-induced antigen retrieval. Antibody LS-B2929 concentration 5 ug/ml.

Immunofluorescence Image:



Immunofluorescence staining of human ES cell colony with monoclonal anti-human TRA1 antibody (2H3).

Western Blot Image:



The cell lysates of hES(20 ug) were resolved by SDS-PAGE, transferred to PVDF membrane and probed with anti-human TRA 1 (1:500). Proteins were visualized using a goat anti-mouse secondary antibody conjugated to HRP and an ECL detection system.

Requested From:

Japan

Laboratory Reagent For In Vitro Research Use Only

Not for resale without prior written consent from LifeSpan BioSciences, Inc.

Created on 9/23/2014

© 2014 LifeSpan BioSciences