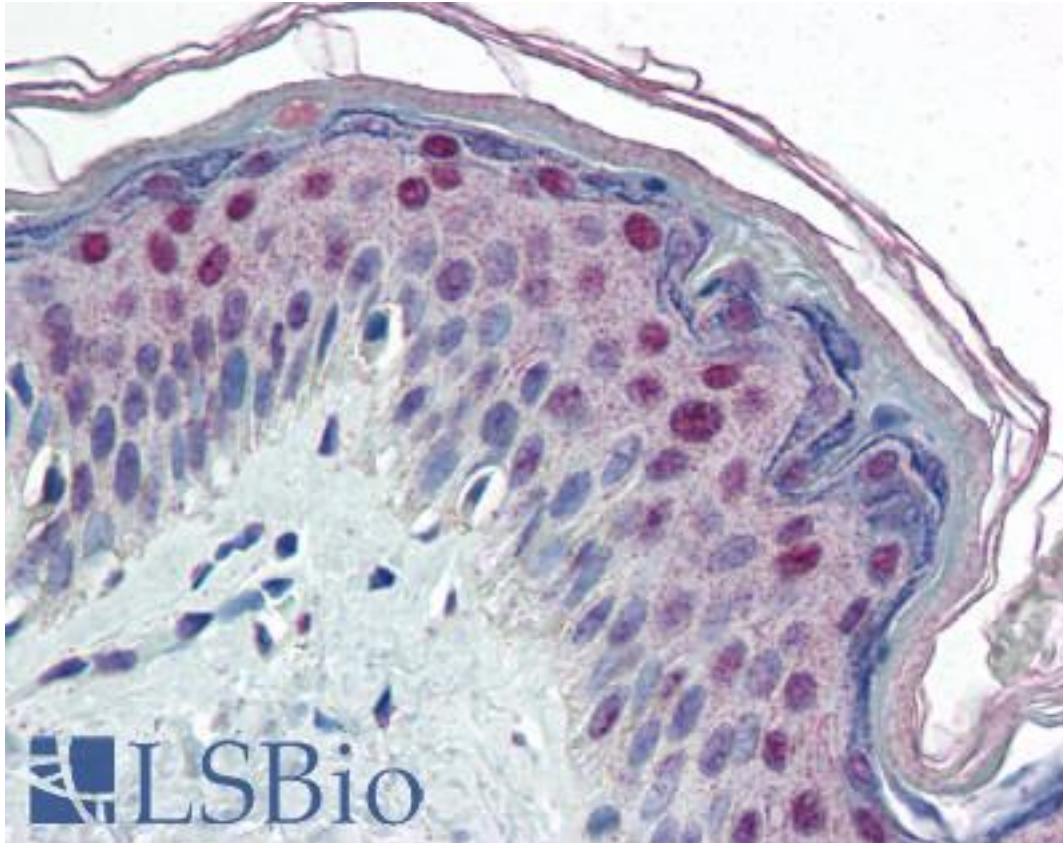


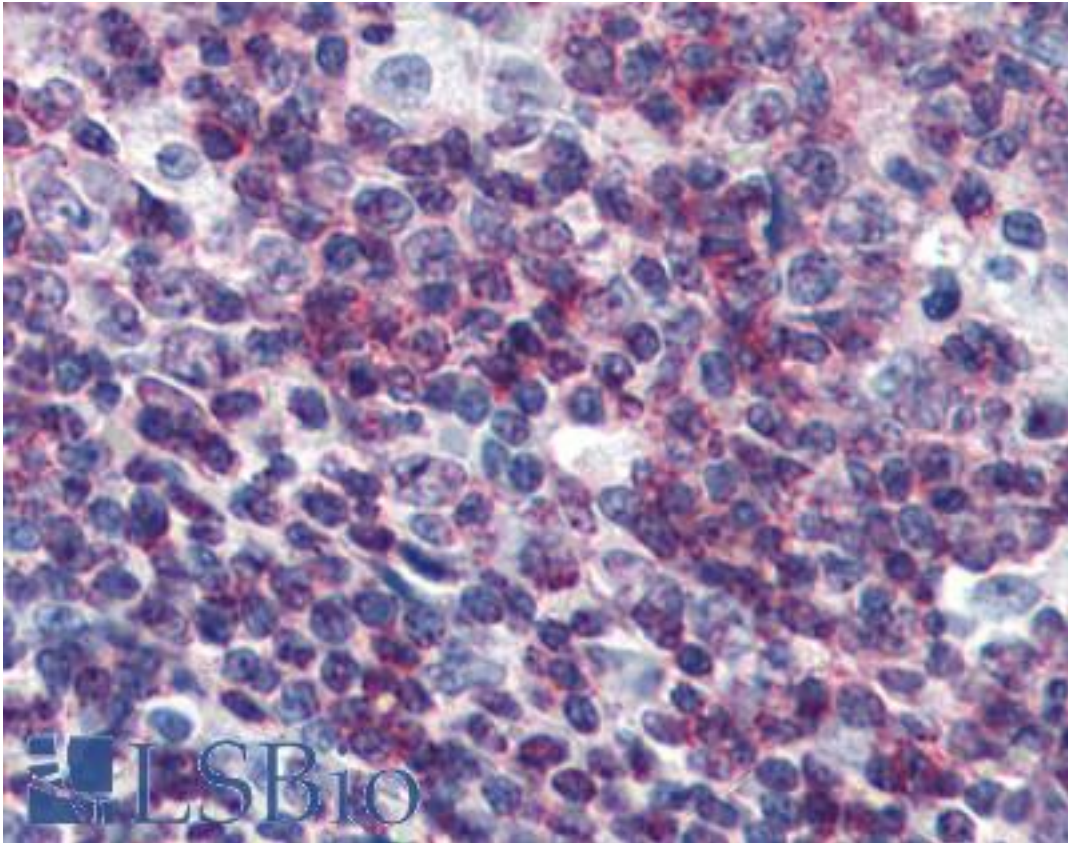
C/EBP Beta / CEBPB Mouse anti-Human Monoclonal (47A1) Antibody - LS-B2926 - LSBio	
CatalogID:	LS-B2926
Validation:	This antibody replaces catalog number LS-C93711. It has been validated for use in the following assays: IHC-P.
Target:	CCAAT/enhancer binding protein (C/EBP), beta (CEBPB)
Synonyms:	CEBPB Antibody, C/EBP-beta Antibody, C/EBP beta Antibody, CRP2 Antibody, LAP Antibody, Liver activator protein Antibody, Nuclear factor NF-IL6 Antibody, IL6DBP Antibody, TCF5 Antibody, NFIL6 Antibody, TCF-5 Antibody, Transcription factor 5 Antibody, NF-IL6 Antibody
Host	CEBPB antibody was produced in Mouse
Clonality:	Monoclonal
Isotype:	IgG1,k
Clone Name:	47A1
Immunogen Species:	C/EBP Beta / CEBPB antibody was raised against Human
Immunogen:	C/EBP Beta / CEBPB antibody was raised against recombinant human C/EBP-kappa(1-271 aa) purified from E. coli.
Reactivity:	Human
Presentation:	PBS, pH 7.4, 0.1 % sodium azide
Recommended Storage:	Store at -20°C. Aliquot to avoid freeze/thaw cycles.
Usage Summary:	Immunohistochemistry: LS-B2926 was validated for use in immunohistochemistry on a panel of 21 formalin-fixed, paraffin-embedded (FFPE) human tissues after heat induced antigen retrieval in pH 6.0 citrate buffer. After incubation with the primary antibody, slides were incubated with biotinylated secondary antibody, followed by alkaline phosphatase-streptavidin and chromogen. The stained slides were evaluated by a pathologist to confirm staining specificity. The optimal working concentration for LS-B2926 was determined to be 10 ug/ml.
Uses:	IHC - Paraffin (10 µg/ml), Western blot (1:500 - 1:2000), ELISA (Optimal dilution to be determined by the researcher)
Size:	50 µg
Concentration:	1 mg/ml

Immunohistochemistry Image:



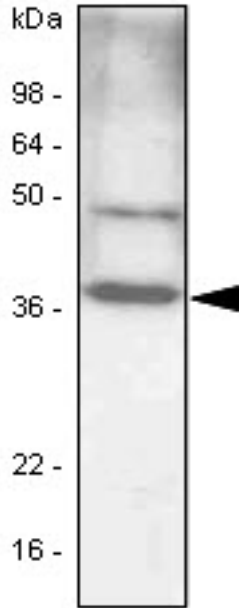
Anti-CEBPB / CEBP Beta antibody IHC of human skin. Immunohistochemistry of formalin-fixed, paraffin-embedded tissue after heat-induced antigen retrieval. Antibody LS-B2926 concentration 10 ug/ml.

Immunohistochemistry Image:



Anti-CEBPB / CEBP Beta antibody IHC of human tonsil. Immunohistochemistry of formalin-fixed, paraffin-embedded tissue after heat-induced antigen retrieval. Antibody LS-B2926 concentration 10 ug/ml.

Western Blot Image:



NIH 3T3 cell lysates(30 ug) were resolved by SDS-PAGE, transferred to PVDF membrane and probed with anti-human C/EBP-beta antibody (1:1000). Protein was visualized using a goat anti-mouse secondary antibody conjugated to HRP and an ECL detection system.

Requested From:

Japan

Laboratory Reagent For In Vitro Research Use Only

Not for resale without prior written consent from LifeSpan BioSciences, Inc.

Created on 9/23/2014

© 2014 LifeSpan BioSciences