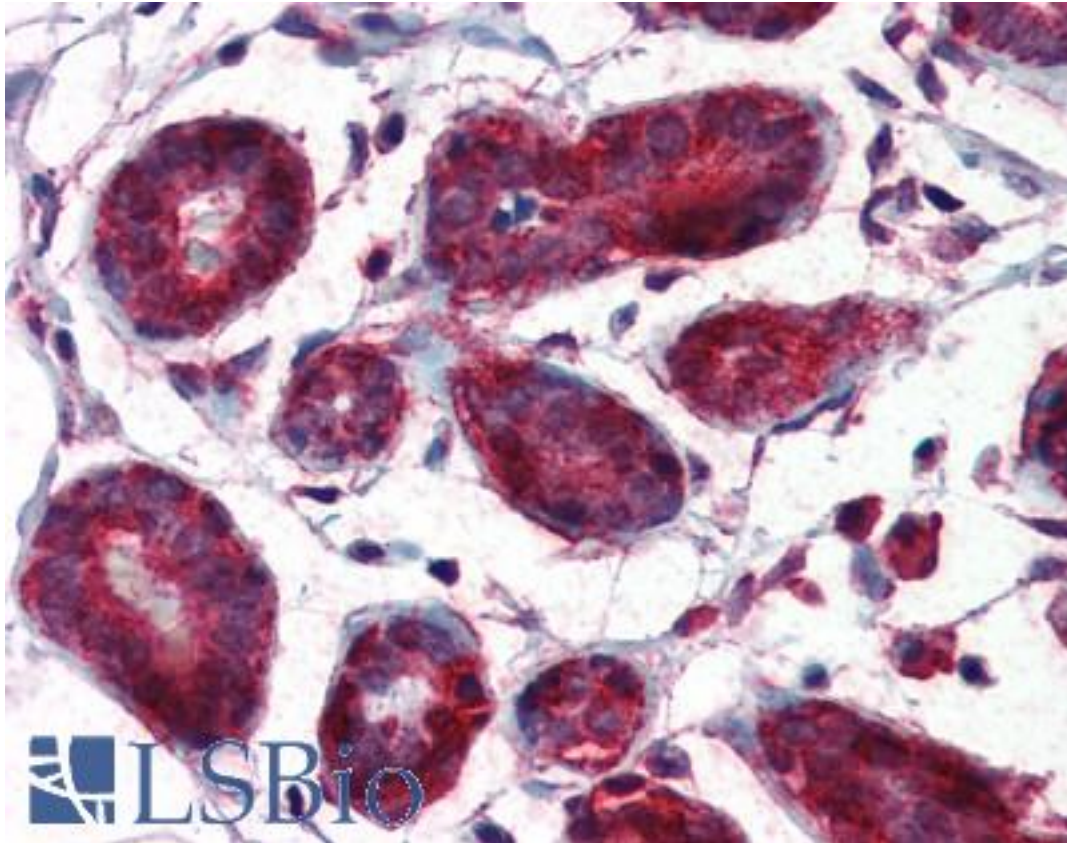


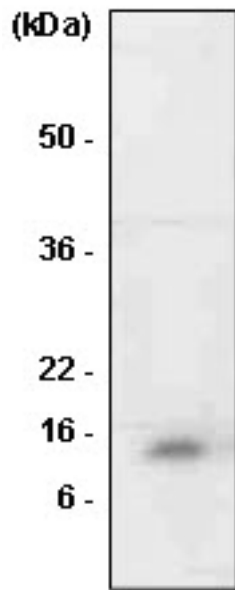
MIF Mouse anti-Human Monoclonal (4E4) Antibody - LS-B2925 - LSBio	
CatalogID:	LS-B2925
Validation:	This antibody replaces catalog number LS-C93767. It has been validated for use in the following assays: IHC-P.
Target:	macrophage migration inhibitory factor (glycosylation-inhibiting factor) (MIF)
Synonyms:	MIF Antibody, GLIF Antibody, L-dopachrome tautomerase Antibody, L-dopachrome isomerase Antibody, MMIF Antibody, Phenylpyruvate tautomerase Antibody
Host	MIF antibody was produced in Mouse
Clonality:	Monoclonal
Isotype:	IgG1,k
Clone Name:	4E4
Immunogen Species:	MIF antibody was raised against Human
Antigen Type:	Recombinant protein
Immunogen:	MIF antibody was raised against recombinant human MIF (1-114 aa) purified from E. coli.
Reactivity:	Human
Purification:	Protein G purified
Presentation:	PBS, pH 7.4, 0.1% sodium azide. Sourced in Ascites.
Recommended Storage:	Long term: -20°C; Short term: +4°C; Avoid freeze-thaw cycles.
Usage Summary:	Immunohistochemistry: LS-B2925 was validated for use in immunohistochemistry on a panel of 21 formalin-fixed, paraffin-embedded (FFPE) human tissues after heat induced antigen retrieval in pH 6.0 citrate buffer. After incubation with the primary antibody, slides were incubated with biotinylated secondary antibody, followed by alkaline phosphatase-streptavidin and chromogen. The stained slides were evaluated by a pathologist to confirm staining specificity. The optimal working concentration for LS-B2925 was determined to be 5 ug/ml.
Uses:	IHC - Paraffin (5 µg/ml), Western blot (1:500 - 1:2000), ELISA (Optimal dilution to be determined by the researcher)
Size:	50 µg
Concentration:	1 mg/ml

Immunohistochemistry Image:



Anti-MIF antibody IHC of human breast. Immunohistochemistry of formalin-fixed, paraffin-embedded tissue after heat-induced antigen retrieval. Antibody LS-B2925 concentration 5 ug/ml.

Western Blot Image:



The extract of HL-60 was resolved by SDS-PAGE, transferred to PVDF membrane and probed with anti-human MIF antibody (1:1000). Protein was visualized using a goat anti-mouse secondary antibody conjugated to HRP and an ECL detection system.

Requested From:

Japan

Laboratory Reagent For In Vitro Research Use Only

Not for resale without prior written consent from LifeSpan BioSciences, Inc.

Created on 9/23/2014

© 2014 LifeSpan BioSciences