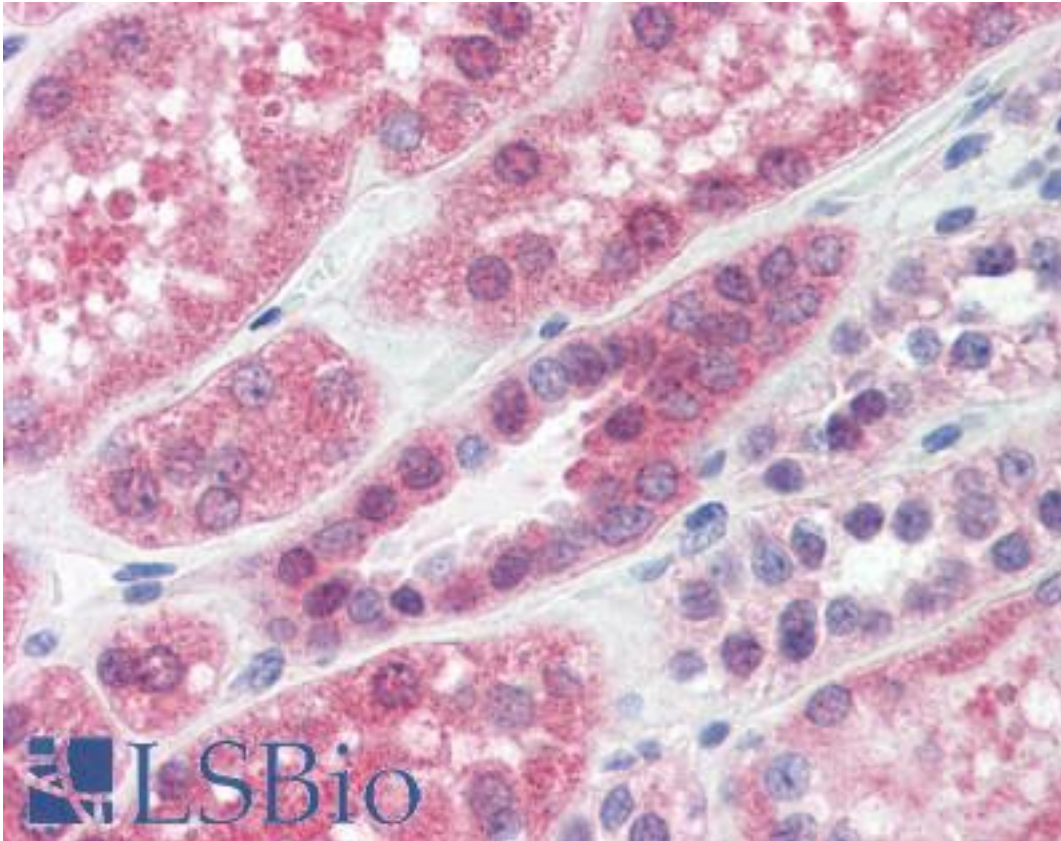


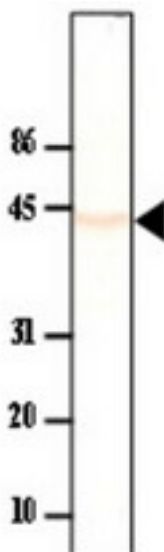
PP2Ac / PPP2CA Mouse anti-Human Monoclonal (P6C7) Antibody - LS-B2922 - LSBio	
<b>CatalogID:</b>	LS-B2922
<b>Validation:</b>	This antibody replaces catalog number LS-C93784. It has been validated for use in the following assays: IHC-P.
<b>Target:</b>	protein phosphatase 2, catalytic subunit, alpha isozyme (PPP2CA)
<b>Synonyms:</b>	PPP2CA Antibody, PP2Ac Antibody, PP2Calpha Antibody, ppp2A1 Antibody, Protein phosphatase 2A alpha Antibody, Replication protein C Antibody, PP2CA Antibody, RP-C Antibody, PP2A-alpha Antibody
<b>Family / Subfamily:</b>	Protein Phosphatase / PP2A
<b>Host</b>	PPP2CA antibody was produced in Mouse
<b>Clonality:</b>	Monoclonal
<b>Isotype:</b>	IgG2b,k
<b>Clone Name:</b>	P6C7
<b>Immunogen Species:</b>	PP2Ac / PPP2CA antibody was raised against Human
<b>Antigen Type:</b>	Recombinant protein
<b>Immunogen:</b>	PP2Ac / PPP2CA antibody was raised against recombinant human PP2Ckappa protein.
<b>Reactivity:</b>	Human
<b>Purification:</b>	Protein G purified
<b>Presentation:</b>	PBS, pH 7.4, 0.1% sodium azide
<b>Recommended Storage:</b>	Long term: -20°C; Short term: +4°C; Avoid freeze-thaw cycles.
<b>Usage Summary:</b>	Immunohistochemistry: LS-B2922 was validated for use in immunohistochemistry on a panel of 21 formalin-fixed, paraffin-embedded (FFPE) human tissues after heat induced antigen retrieval in pH 6.0 citrate buffer. After incubation with the primary antibody, slides were incubated with biotinylated secondary antibody, followed by alkaline phosphatase-streptavidin and chromogen. The stained slides were evaluated by a pathologist to confirm staining specificity. The optimal working concentration for LS-B2922 was determined to be 15 ug/ml.
<b>Uses:</b>	IHC - Paraffin (15 µg/ml), Western blot (1:250 - 1:1000), Immunoprecipitation, ELISA (Optimal dilution to be determined by the researcher)
<b>Size:</b>	50 µg

**Immunohistochemistry Image:**



Anti-PPP2CA / PP2Ac antibody IHC of human kidney. Immunohistochemistry of formalin-fixed, paraffin-embedded tissue after heat-induced antigen retrieval. Antibody LS-B2922 concentration 15 ug/ml.

**Western Blot Image:**



Mouse liver cytosol extract was resolved by electrophoresis, transferred to PVDF membrane and probed with anti-PP2Ca(1:250). Proteins were visualized using a goat anti-mouse secondary antibody conjugated to HRP and a DAP detection system. Arrow indicates PP2Ca(~43kD).

<b>Requested From:</b>	Japan
Laboratory Reagent For In Vitro Research Use Only	
Not for resale without prior written consent from LifeSpan BioSciences, Inc.	
Created on 9/23/2014	
© 2014 LifeSpan BioSciences	