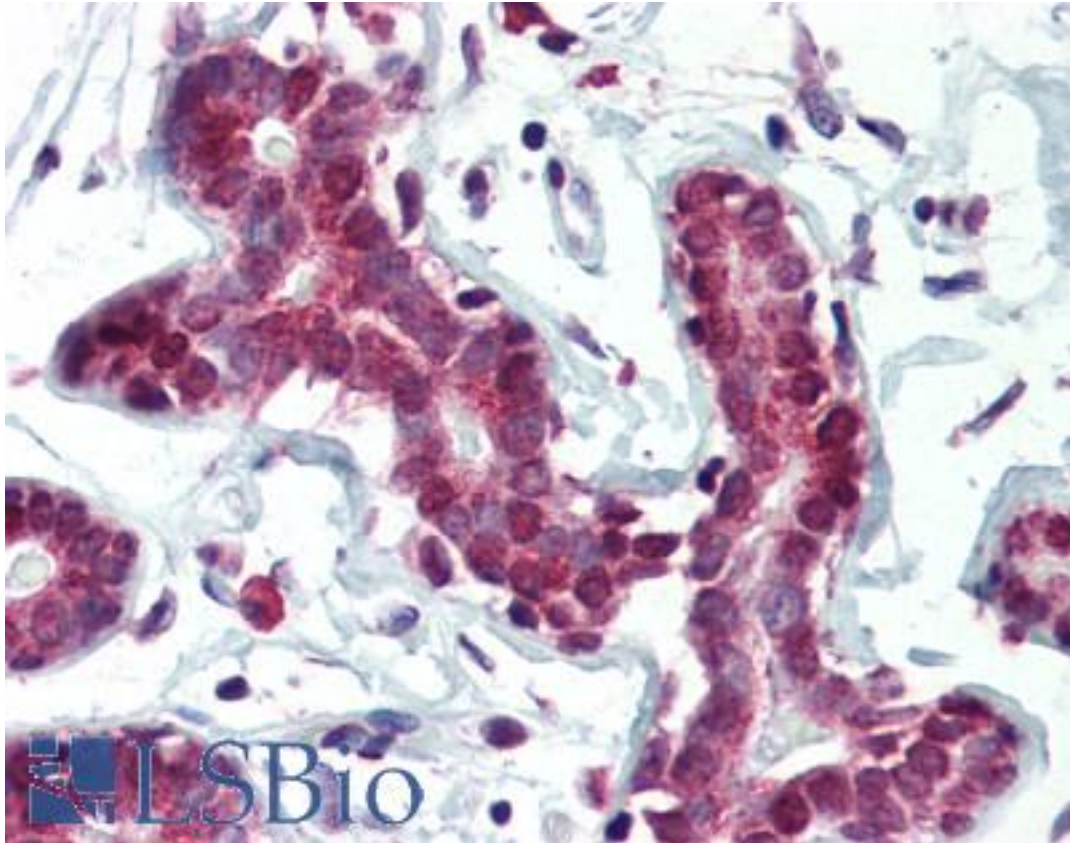


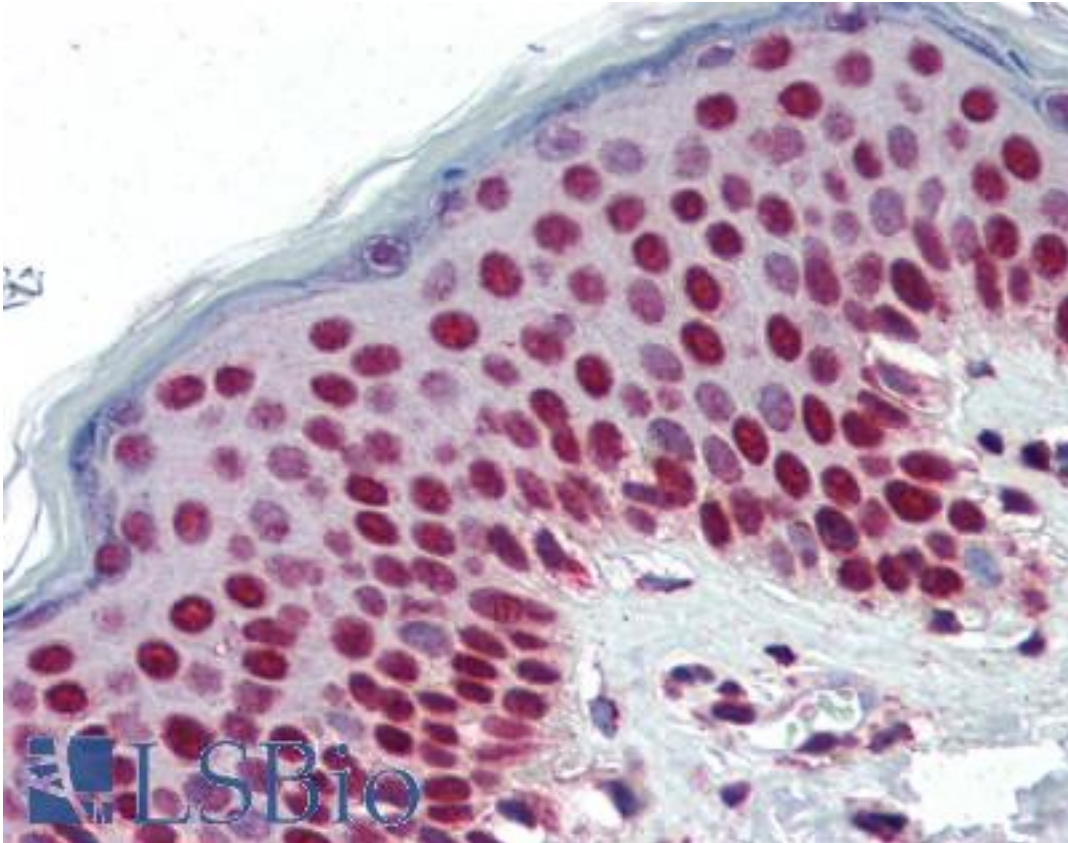
SETD7 / SET7 Mouse anti-Human Monoclonal (S4E5) Antibody - LS-B2921 - LSBio	
CatalogID:	LS-B2921
Validation:	This antibody replaces catalog number LS-C93745. It has been validated for use in the following assays: IHC-P.
Target:	SET domain containing (lysine methyltransferase) 7 (SETD7)
Synonyms:	SETD7 Antibody, Lysine N-methyltransferase 7 Antibody, KIAA1717 Antibody, SET9 Antibody, H3-K4-HMTase SETD7 Antibody, KMT7 Antibody, SET7 Antibody, SET7/9 Antibody
Host	SETD7 antibody was produced in Mouse
Clonality:	Monoclonal
Isotype:	IgG2b,k
Clone Name:	S4E5
Immunogen Species:	SETD7 / SET7 antibody was raised against Human
Immunogen:	SETD7 / SET7 antibody was raised against recombinant human SET7/9 protein Isotype Mouse IgG2b, heavy chains and kappa light chains.
Reactivity:	Human
Purification:	Protein G purified
Presentation:	PBS, pH 7.4, 0.1% sodium azide
Recommended Storage:	Long term: -20°C; Short term: +4°C; Avoid freeze-thaw cycles.
Usage Summary:	Immunohistochemistry: LS-B2921 was validated for use in immunohistochemistry on a panel of 21 formalin-fixed, paraffin-embedded (FFPE) human tissues after heat induced antigen retrieval in pH 6.0 citrate buffer. After incubation with the primary antibody, slides were incubated with biotinylated secondary antibody, followed by alkaline phosphatase-streptavidin and chromogen. The stained slides were evaluated by a pathologist to confirm staining specificity. The optimal working concentration for LS-B2921 was determined to be 5 ug/ml.
Uses:	IHC - Paraffin (5 µg/ml), Western blot (1:250 - 1:2000), ELISA (Optimal dilution to be determined by the researcher)
Size:	50 µg
Concentration:	1 mg/ml

Immunohistochemistry Image:



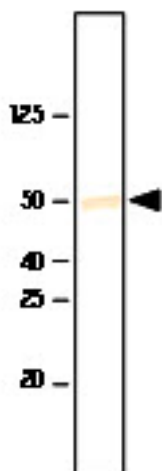
Anti-SETD7 / SET7 antibody IHC of human breast. Immunohistochemistry of formalin-fixed, paraffin-embedded tissue after heat-induced antigen retrieval. Antibody LS-B2921 concentration 5 ug/ml.

Immunohistochemistry Image:



Anti-SETD7 / SET7 antibody IHC of human skin. Immunohistochemistry of formalin-fixed, paraffin-embedded tissue after heat-induced antigen retrieval. Antibody LS-B2921 concentration 5 ug/ml.

Western Blot Image:



Recombinant SET7/9 was resolved by electrophoresis, transferred to PVDF membrane and probed with anti-SET7/9(1:1000). Proteins were visualized using a goat anti-mouse secondary antibody conjugated to HRP and a DAP detection system. Arrow indicated SET7/9(~50Da).

Requested From:

Japan

Laboratory Reagent For In Vitro Research Use Only

Not for resale without prior written consent from LifeSpan BioSciences, Inc.

Created on 9/23/2014

© 2014 LifeSpan BioSciences