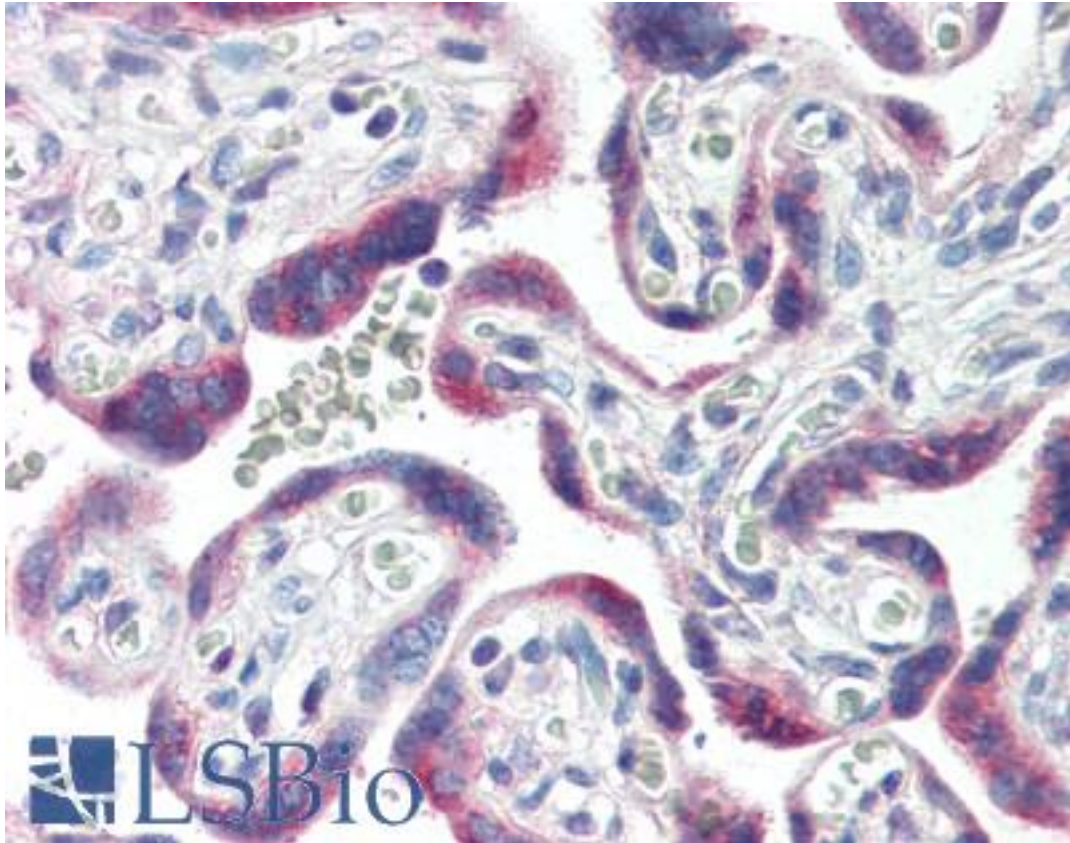


CYP26 / CYP26A1 Mouse anti-Human Monoclonal (C-Terminus) Antibody - LS-B2916 - LSBio

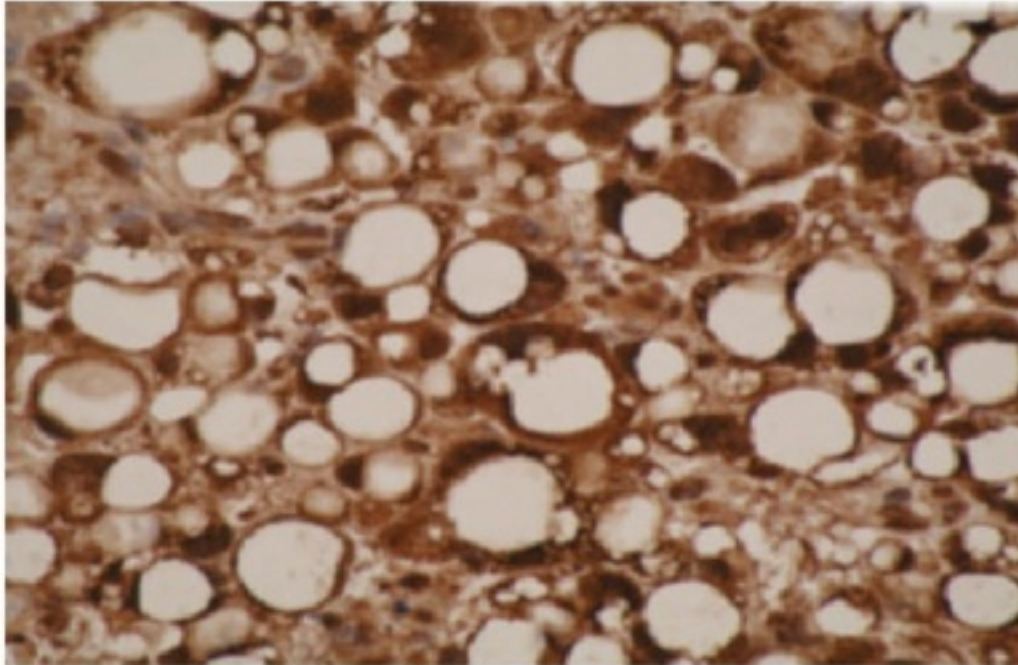
CatalogID:	LS-B2916
Validation:	This antibody replaces catalog number LS-C27026. It has been validated for use in the following assays: IHC-P.
Target:	cytochrome P450, family 26, subfamily A, polypeptide 1 (CYP26A1)
Synonyms:	CYP26A1 Antibody, CYP26 Antibody, Cytochrome P450 26A1 Antibody, Cytochrome P450RAI Antibody, HP450RAI Antibody, p450RAI Antibody, p450RAI1 Antibody, Retinoic acid 4-hydroxylase Antibody, CP26 Antibody
Family / Subfamily:	Cytochrome P450 / not assigned-Cytochrome P450
Host	CYP26A1 antibody was produced in Mouse
Clonality:	Monoclonal
Isotype:	IgG1
Immunogen Species:	CYP26 / CYP26A1 antibody was raised against Human
Antigen Type:	Synthetic peptide
Immunogen:	CYP26 / CYP26A1 antibody was raised against synthetic peptide derived from the C-terminus of the human CYP 450 26A1 protein.
Epitope:	C-Terminus
Reactivity:	Human
Purification:	Protein A/G purified
Presentation:	PBS, 0.08% sodium azide. Sourced in TCS.
Recommended Storage:	Aliquot and store at -20°C. Minimize freezing and thawing.
Usage Summary:	Immunohistochemistry: LS-B2916 was validated for use in immunohistochemistry on a panel of 21 formalin-fixed, paraffin-embedded (FFPE) human tissues after heat induced antigen retrieval in pH 6.0 citrate buffer. After incubation with the primary antibody, slides were incubated with biotinylated secondary antibody, followed by alkaline phosphatase-streptavidin and chromogen. The stained slides were evaluated by a pathologist to confirm staining specificity. The optimal working concentration for LS-B2916 was determined to be 10 ug/ml.
Uses:	IHC - Paraffin (10 µg/ml), Western blot, ELISA (Optimal dilution to be determined by the researcher)
Size:	50 µg
Concentration:	0.53 mg/ml

Immunohistochemistry Image:



Anti-CYP26A1 antibody IHC of human placenta. Immunohistochemistry of formalin-fixed, paraffin-embedded tissue after heat-induced antigen retrieval. Antibody LS-B2916 concentration 10 ug/ml.

Immunohistochemistry Image:



A. IHC of liposarcoma cells using CYP26A1 antibody (LS-B2916). B. Western blot on recombinant protein corresponding to C-terminal region of CYP26A1 protein using CYP26A1 antibody.

Requested From:

Japan

Laboratory Reagent For In Vitro Research Use Only

Not for resale without prior written consent from LifeSpan BioSciences, Inc.

Created on 9/23/2014

© 2014 LifeSpan BioSciences