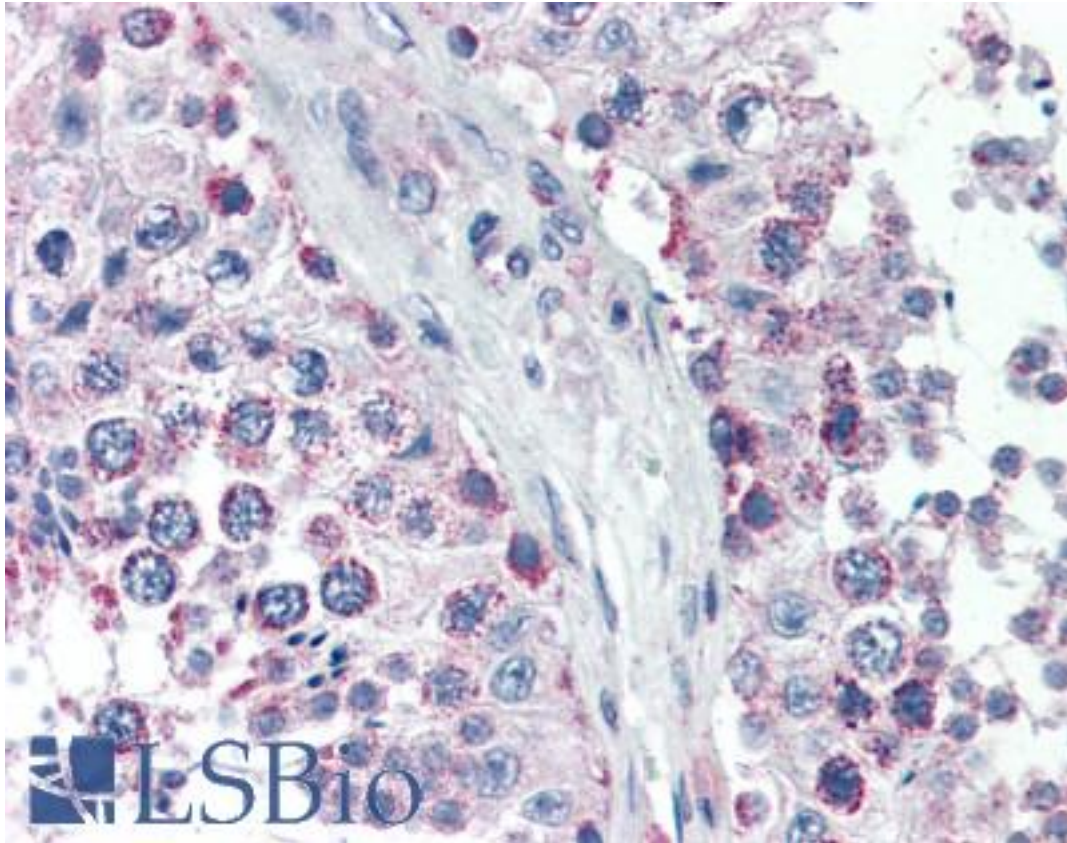


GPSM2 / LGN Goat anti-Human Polyclonal (Internal) Antibody - LS-B2915 - LSBio

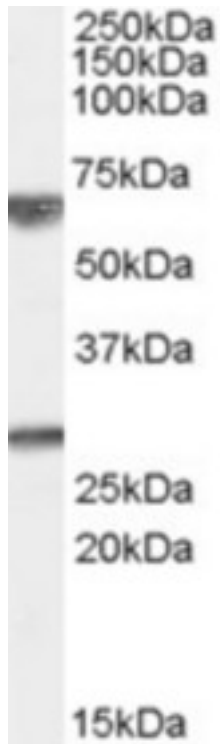
CatalogID:	LS-B2915
Validation:	This antibody replaces catalog number LS-C54935. It has been validated for use in the following assays: IHC-P.
Target:	G-protein signaling modulator 2 (GPSM2)
Synonyms:	GPSM2 Antibody, DFNB82 Antibody, LGN Antibody, PINS Antibody, CMCS Antibody, Mosaic protein LGN Antibody
Host	GPSM2 antibody was produced in Goat
Clonality:	Polyclonal
Immunogen Species:	GPSM2 / LGN antibody was raised against Human
Antigen Type:	Synthetic peptide
Immunogen:	GPSM2 / LGN antibody was raised against synthetic peptide C-NRLKGGKYYKTNSSSTK from an internal region of human GPSM2 (NP_037428.2). Percent identity by BLAST analysis: Human, Gibbon, Marmoset, Elephant, Bovine (100%); Dog (93%); Panda, Bat, Horse, Opossum, Platypus (87%); Hamster (80%).
Specificity:	Human GPSM2.
Epitope:	Internal
Reactivity:	Human, Gibbon, Monkey, Bovine
Predicted Reactivity:	Dog
Purification:	Immunoaffinity purified
Presentation:	Tris-buffered saline, pH 7.3, 0.5% BSA, 0.02% sodium azide
Recommended Storage:	Store at -20°C. Minimize freezing and thawing.
Usage Summary:	Immunohistochemistry: LS-B2915 was validated for use in immunohistochemistry on a panel of 21 formalin-fixed, paraffin-embedded (FFPE) human tissues after heat induced antigen retrieval in pH 6.0 citrate buffer. After incubation with the primary antibody, slides were incubated with biotinylated secondary antibody, followed by alkaline phosphatase-streptavidin and chromogen. The stained slides were evaluated by a pathologist to confirm staining specificity. The optimal working concentration for LS-B2915 was determined to be 5 ug/ml.
Uses:	IHC - Paraffin (5 µg/ml), Western blot (0.01 - 0.03 µg/ml), ELISA (1:64000) (Optimal dilution to be determined by the researcher)
Size:	50 µg
Concentration:	0.5 mg/ml

Immunohistochemistry Image:



Anti-GPSM2 antibody IHC of human testis. Immunohistochemistry of formalin-fixed, paraffin-embedded tissue after heat-induced antigen retrieval. Antibody LS-B2915 concentration 5 ug/ml.

Western Blot Image:



Antibody (0.01 ug/ml) staining of Human Brain (Cerebellum) lysate (35 ug protein in RIPA buffer). Primary incubation was 1 hour. Detected by chemiluminescence.

Requested From:

Japan

Laboratory Reagent For In Vitro Research Use Only

Not for resale without prior written consent from LifeSpan BioSciences, Inc.

Created on 9/23/2014

© 2014 LifeSpan BioSciences