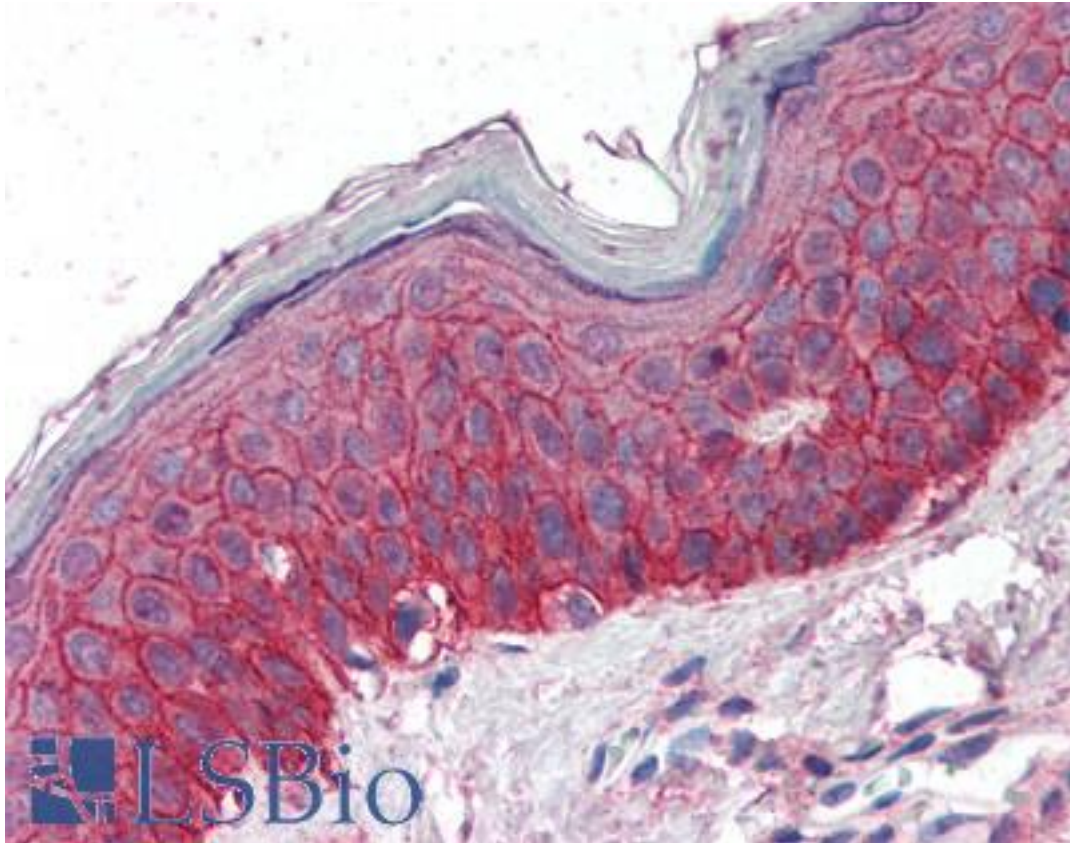


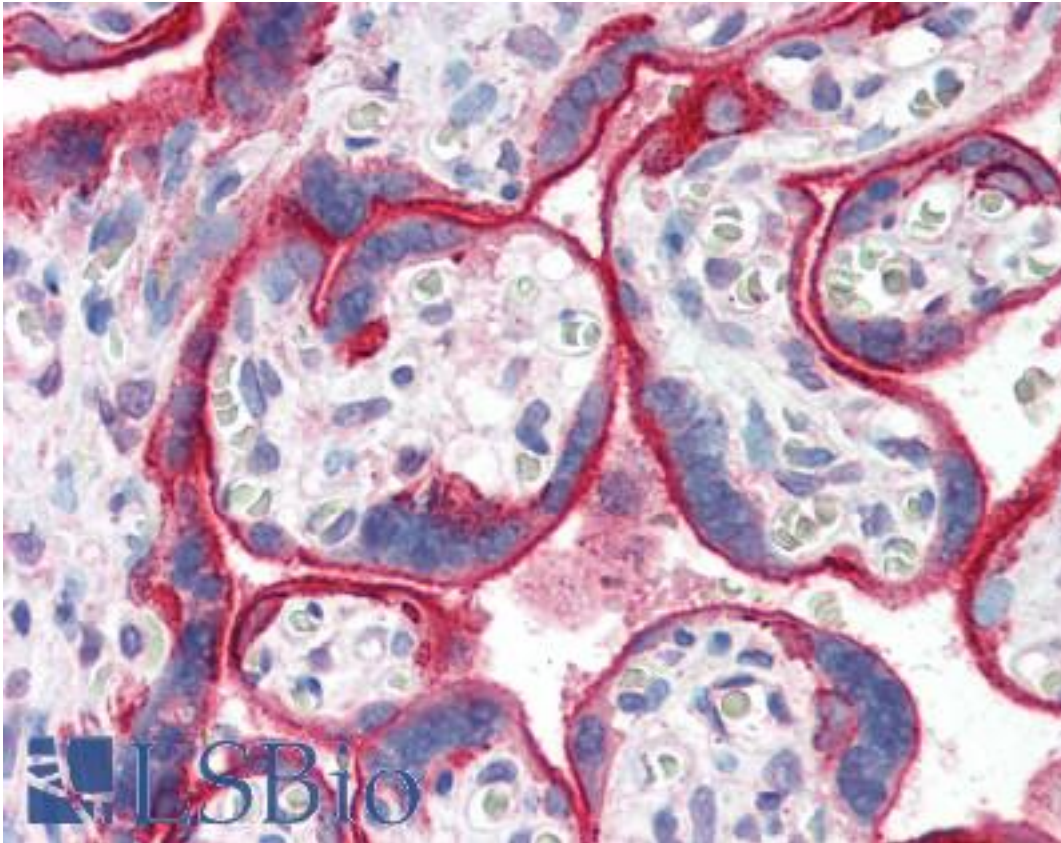
| EGFR Sheep anti-Human Polyclonal (Internal) Antibody - LS-B2914 - LSBio | |
|---|--|
| CatalogID: | LS-B2914 |
| Validation: | This antibody replaces catalog number LS-C84004. It has been validated for use in the following assays: IHC-P. |
| Target: | epidermal growth factor receptor (EGFR) |
| Synonyms: | EGFR Antibody, EGf receptor Antibody, ERBB Antibody, ERBB1 Antibody, MENA Antibody, Panitumumab Antibody, PIG61 Antibody, Proto-oncogene c-ErbB -1 Antibody, V-erb-b homolog Antibody, EGF-R Antibody, HER1 Antibody |
| Family / Subfamily: | Protein Kinase / EGF Receptor |
| Host | EGFR antibody was produced in Sheep |
| Clonality: | Polyclonal |
| Immunogen Species: | EGFR antibody was raised against Human |
| Antigen Type: | Synthetic phospho-peptide |
| Immunogen: | EGFR antibody was raised against a synthetic 20 amino acid peptide of human EGFR representing a portion of the internal domain proximal to a phosphorylation region. |
| Specificity: | This EGFR antibody recognizes a region of the internal domain. Antibody binding blocks phosphorylation and does not interfere with EGF binding. |
| Epitope: | Internal |
| Reactivity: | Human, Mouse, Rat, Chicken |
| Purification: | Protein G purified |
| Presentation: | PBS, pH 7.4. |
| Recommended Storage: | Long term: -20°C; Short term: +4°C. Avoid repeat freeze-thaw cycles. |
| Usage Summary: | Immunohistochemistry: LS-B2914 was validated for use in immunohistochemistry on a panel of 21 formalin-fixed, paraffin-embedded (FFPE) human tissues after heat induced antigen retrieval in pH 6.0 citrate buffer. After incubation with the primary antibody, slides were incubated with biotinylated secondary antibody, followed by alkaline phosphatase-streptavidin and chromogen. The stained slides were evaluated by a pathologist to confirm staining specificity. The optimal working concentration for LS-B2914 was determined to be 5 ug/ml. Western Blot: Dilution range 10 - 50 ug/mL dependent on receptor concentration. Immunoprecipitation (IP) - A431 epidermoid carcinoma 10 - 12 ug/mL. Protein kinase activity is measurable on the immunoprecipitated receptor. Immunocytochemistry (IC) Formalin fixed cells: 25 - 100 ug/mL dependent on receptor concentration. |
| Uses: | IHC - Paraffin (5 ug/ml), ICC, Western blot, Immunoprecipitation (10 - 12 ug/ml) (Optimal dilution to be determined by the researcher) |
| Size: | 50 ug |
| Concentration: | 1 mg/ml |

Immunohistochemistry Image:



Anti-EGFR antibody IHC of human skin. Immunohistochemistry of formalin-fixed, paraffin-embedded tissue after heat-induced antigen retrieval. Antibody LS-B2914 concentration 5 ug/ml.

Immunohistochemistry Image:



Anti-EGFR antibody IHC of human placenta. Immunohistochemistry of formalin-fixed, paraffin-embedded tissue after heat-induced antigen retrieval. Antibody LS-B2914 concentration 5 ug/ml.

Requested From:

Japan

Laboratory Reagent For In Vitro Research Use Only

Not for resale without prior written consent from LifeSpan BioSciences, Inc.

Created on 9/23/2014

© 2014 LifeSpan BioSciences